



# National Excellence in Construction® Awards

**THURSDAY, MARCH 14, 2024**

TOP CONSTRUCTION PROJECTS AND TEAMS  
INDUSTRY-LEADING SAFETY PROGRAMS  
CHAMPIONS OF INCLUSION, DIVERSITY AND MERIT

  
**CONVENTION 2024**  
*Kissimmee, Florida*  
March 13-15



# National Excellence in Construction Awards

PANEL OF JUDGES / 3

## Eagle Winners

SPECIALTY CONTRACTORS / 4  
GENERAL CONTRACTORS / 11

## Pyramid Winners

SPECIALTY CONTRACTORS / 20  
GENERAL CONTRACTORS / 23

# National Safety Excellence Awards

PANEL OF JUDGES / 27

## Pinnacle Winners

GENERAL CONTRACTORS / 28  
HEAVY AND CIVIL ENGINEERING CONTRACTORS / 29  
SPECIALTY CONTRACTORS / 29

## Excellence Winners

GENERAL CONTRACTORS / 30  
HEAVY AND CIVIL ENGINEERING CONTRACTORS / 30  
SPECIALTY CONTRACTORS / 30

## Merit Winners

GENERAL CONTRACTORS / 31  
HEAVY AND CIVIL ENGINEERING CONTRACTORS / 31  
SPECIALTY CONTRACTORS / 31

# National Inclusion, Diversity and Merit Excellence Awards

PANEL OF JUDGES / 33

## National Inclusion, Diversity and Merit Excellence Award Winners

ASSOCIATE/SUPPLIER / 33  
GENERAL CONTRACTOR (OVER \$33 MILLION) / 33  
GENERAL CONTRACTOR (UNDER \$33 MILLION) / 33  
SUBCONTRACTOR / 33

# National Contractor of the Year Award

## National Contractor of the Year Winner / 34

# Index of All Winners / 36

# Program Sponsors / 37



**ABC’s Top Performers** lists recognize ABC member contractors’ achievements in safety, quality, diversity and project excellence ranked by work hours, with special designations identified. Published annually as a supplement to Construction Executive magazine, the listings highlight contractors that have earned ABC’s Accredited Quality Contractor credential for their commitment to corporate responsibility in quality, safety, talent management, education, community relations and inclusion, diversity and merit.

**[abc.org/abctopperformers](http://abc.org/abctopperformers)**

**Built on Excellence**

# 2023 NATIONAL EXCELLENCE IN CONSTRUCTION AWARDS

The Excellence in Construction Awards honor the skill and creativity of the entire team—contractor, owner, architect and engineer—responsible for an outstanding merit shop construction project. The 2023 award recipients exceeded expectations in innovation and quality.

---

Program Sponsor





# Panel of Judges

**Michael Barker**

Operations Manager  
Hensel Phelps Construction  
Tysons Corner, Virginia

**Michael Beglinger**

Associate Director, Office of Planning,  
Facilities, Exhibits and LSS  
Smithsonian Institution National Zoo  
Washington

**Laura Cooley**

Founder  
Developing Construction Leaders  
Orlando, Florida

**Andrew Dettmann**

Senior Director of Design,  
Construction, and Facilities  
At Home Group Inc.  
Dallas

**Stephanie Hixson, PE, LEED AP**

Kensington, Maryland

**Steve Kuhn**

Executive Vice President  
Sevan Multi-Site Solutions  
Franklin, Tennessee

**Kris Lengieza**

Vice President, Global Technology  
Evangelist  
Procore Technologies  
Jupiter, Florida

**Tommy Linstroth, LEED Fellow**

Founder and CEO  
Green Badger  
Savannah, Georgia

**Dave Mielke**

President  
MIELKE Holdings LLC  
Tampa, Florida

**Joe Powell**

Chairman  
University Research Institute  
Washington

**Derek Ross**

Director, Office of Planning Design and  
Construction  
Smithsonian Institution  
Washington

**Jeffrey Rubenstone**

Deputy Editor, News & Technology  
Engineering News-Record  
New York

**Hugh Seaton**

CEO  
The Link  
Austin, Texas

**Jay Snyder**

President and Principal  
Big Blue Innovations  
Cary, North Carolina

**Dave Spencer**

President  
S. David & Co. LLC  
Jacksonville, Florida

**Richard Thomas, PLC**

Director, State/Local Legislative Affairs  
Design-Build Institute of America  
Washington

**David Walsh**

Senior Director – Global Design  
Marriott International  
Bethesda, Maryland

# Eagle Winners

## Specialty Contractors



ELECTRICAL: COMMERCIAL >  
UP TO \$2 MILLION

- C** **HELIX ELECTRIC**
- N** Lotus of Siam at Red Rock Casino Resort & Spa
- L** Las Vegas
- CO** Red Rock Casino Resort & Spa
- A** Friedmutter Group
- E** FEA Consulting Engineers

This restaurant remodel created an authentic Thai atmosphere, including dining, bar and patio seating using hand-crafted finishes of brick veneer, bamboo structures, a single-pivot hand-crafted door and 300 Asian lanterns, with some floating from selected tree limbs below a retractable skylight.



- ELECTRICAL: COMMERCIAL >  
\$2 TO \$10 MILLION
- C** **MERIT ELECTRICAL GROUP INC.**
  - N** Seneca Valley Ehrman Crest Elementary and Middle School
  - L** Cranberry Township, Pennsylvania
  - CO** Seneca Valley School District
  - A** CannonDesign
  - E** Tower Engineering
  - GC** Rycon Construction

The school was designed to model a children’s museum and has received numerous design awards and recognitions, including Time Magazine’s Best Inventions of 2022 and the American Institute of Architects 2023 Facility Design Awards, and was featured in Smithsonian Magazine.



- ELECTRICAL: INDUSTRIAL >  
UP TO \$2 MILLION
- C** **TRIAD ELECTRIC & CONTROLS**
  - N** Vertellus Project Delta Expansion
  - L** Denham Springs, Louisiana
  - CO** Aurorium
  - E** Aurorium

Triad achieved a significant triumph in early February 2023 by spearheading the electrical and instrumentation for Vertellus’ \$1.2 million Project Delta expansion.



# Eagle Winners

## Specialty Contractors



ELECTRICAL: INDUSTRIAL >  
\$2 TO \$10 MILLION

**C** MMR CONSTRUCTORS INC.

**N** River Birch C12 Expansion Project

**L** Avondale, Louisiana

**CO** River Birch

The project exemplifies a strong commitment to environmental sustainability. MMR's experience and expertise in handling complex electrical and instrumentation systems were integral factors that contributed to the success of the project.



ELECTRICAL > MORE THAN \$10 MILLION

**C** ISC CONSTRUCTORS LLC

**N** ExxonMobil Baytown Chemical Expansion Project

**L** Baytown, Texas

**CO** ExxonMobil

**E** Technimont

**GC** Performance Contractors Inc.

The fast-paced project was filled with many challenges, from implementing new technology to working during a global pandemic. Notably, ISC completed all electrical and instrumentation construction spanning 1,865,000 workhours with zero OSHA recordable incidents, emphasizing quality craftwork and exceptional performance.



EXTERIORS > EXTERIOR FINISHES

**C** HALEY-GREER INC.

**N** Christus Health Headquarters

**L** Las Colinas, Texas

**CO** Christus Health

**A** Boka Powell

**GC** Manhattan Construction

The geometric shape of the building that is now home to the Christus Health headquarters was a design challenge from inception to actual construction completion. This high-rise headquarters had many complicated details and transitions from floor to floor.





# Eagle Winners

## Specialty Contractors



INNOVATION  
AWARD WINNER

EXTERIORS > MASONRY, PRECAST OR STONE

- C PREMIER PRECAST**
- N** The Plaza Coral Gables
- L** Coral Gables, Florida
- CO** Agave Ponce LLC
- A** Callison RTKL
- E** Desimone Consulting Engineers
- GC** Coastal Construction

This 2.1 million-square-foot development is decorated with cast stone and glass fiber reinforced concrete elements. Premier manufactured and installed over 25,000 cubic feet of concrete and 7,000 precast pieces, and produced over 6,800 different molds and more than five miles of moldings.

- INTERIORS > ACOUSTICAL, DRYWALL, MILLWORK OR PLASTER
- C KARSTEN INTERIOR SERVICES LP**
  - N** TMC3 Parcel C
  - L** Houston
  - CO** Texas Medical Center
  - A** Elkus Manfredi Architects
  - E** Walter P Moore

At 250,000 square feet, this cutting-edge facility features a 7,000-square-foot atrium and four stories of research lab and office space to which Karsten completed large-scale activities throughout. Despite five months of procurement delays, the project was completed on time and incident free.



- INTERIORS > INTERIOR FINISHES
- C ADAMS GROUP**
  - N** Sarasota Memorial Hospital– Venice Campus
  - L** Venice, Florida
  - CO** Sarasota City Public Hospital Board
  - A** Flad Architects
  - GC** Gilbane Building Co.

While working at Sarasota Memorial Hospital, Adams Group realized stronger quality control processes needed to be implemented to ensure all project details were addressed from the beginning due to complexities and casework required.

# Eagle Winners

## Specialty Contractors



MECHANICAL: COMMERCIAL >  
UP TO \$2 MILLION

**C CAPITAL INDUSTRIES LLC**

**N** Austin Energy Mueller Plant Absorption Chiller Replacement

**L** Austin, Texas

**CO** Austin Energy

**A** Austin Energy

**E** Austin Energy

**GC** Trane

Capital partnered with Trane Co. to replace a 930-ton absorption chiller damaged by power outages at the plant, which supplies critical cooling and heating services for the adjacent Dell Children's Hospital, an acute care facility.

MECHANICAL: COMMERCIAL >  
\$2 TO \$10 MILLION

**C M&D MECHANICAL CONTRACTORS INC.**

**N** Huntsville Hospital Eighth Floor NICU and Patient Rooms Renovations

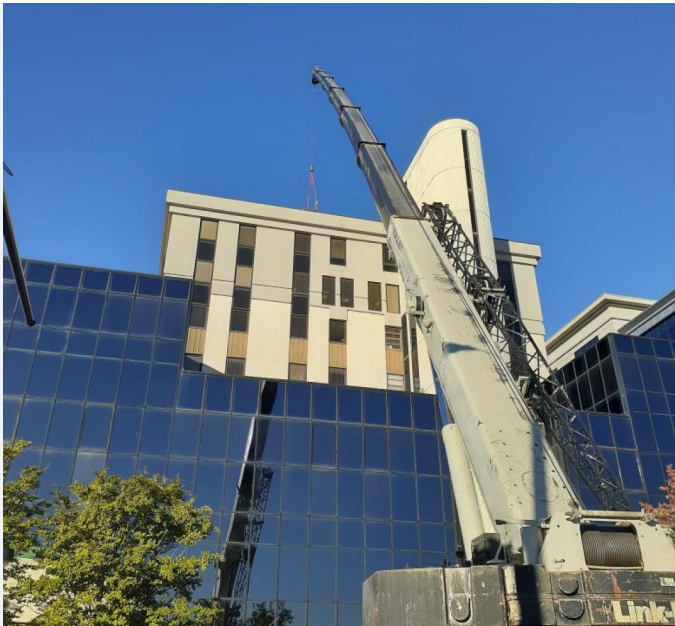
**L** Huntsville, Alabama

**CO** Huntsville Hospital Health System

**A** Chapman Sisson Architects

**E** CHB Mechanical

M&D Mechanical completed the plumbing and mechanical scope of work on this project, which epitomizes their dedication to health care advancement, further positioning Huntsville Hospital as a pillar of the community's health and well-being.



MECHANICAL: INDUSTRIAL >  
UP TO \$2 MILLION

**C M&D MECHANICAL CONTRACTORS INC.**

**N** ARCO Intersect Development 565 Logistics Park Phase 2

**L** Huntsville, Alabama

**CO** Intersect Development Group

**A** ADB Design Services

**E** S&S Engineers

**GC** ARCO Design/Build SE LLC

M&D Mechanical was tasked with providing the materials and installation of the plumbing and mechanical systems for the project.



# Eagle Winners

## Specialty Contractors



MECHANICAL > MORE THAN \$10 MILLION

**C PERFORMANCE CONTRACTORS INC.**

- N** Diamond Green Diesel 3 Ecofiner Mechanical
- L** Port Arthur, Texas
- CO** Diamond Green Diesel
- E** Richard Industrial Group

The project included 113 pieces of equipment, 1,900 tons of steel and 94,000 feet of pipe installed on an aggressive construction schedule, utilizing multiple night shifts while managing the health and safety of the workforce through the pandemic.



SITework/LANDSCAPE/HARDSCAPE

**C DURR HEAVY CONSTRUCTION LLC**

- N** Ochsner Center for Nursing and Allied Health at Delgado Community College
- L** New Orleans
- CO** LCTCS Facilities Corp.
- A** Manning Architects + Mackey Mitchell Architects
- E** Julien Engineering and Consulting Inc.
- GC** Lemoine

The project is the most recent expansion on the college’s City Park Campus. Durr performed the sitework and underground utilities scope for this compact and fast-paced project.



SPECIALTY CONSTRUCTION: COMMERCIAL > UP TO \$2 MILLION

**C BIG D METALWORKS**

- N** Nancy Best Fountain at Klyde Warren Park
- L** Dallas
- CO** Klyde Warren Park
- A** Fluidity Water Feature Design
- E** Fluidity Water Feature Design
- GC** McCarthy Building Cos.

Big D handcrafted three mirror-polished, stainless 15-foot-tall trees, each from 595 unique members, creating the Nancy Best Fountain at Klyde Warren Park. These enormous structures flew through the air with precision and were expertly placed in the park.





# Eagle Winners

## Specialty Contractors



SPECIALTY CONSTRUCTION: COMMERCIAL >  
\$2 TO \$10 MILLION

**C** MOORE INDUSTRIES LLC

**N** Hurricane Laura Building and Site  
Repairs, Rockefeller Wildlife Refuge

**L** Grand Chenier, Louisiana

**CO** State of Louisiana  
Division of Administration

**A** Hoffpauir Studio LLC

**E** ADG Baton Rouge LLC

Moore Industries successfully completed the Rockefeller Wildlife Refuge building and site repairs project. This project consisted of repairing 11 buildings damaged by Hurricane Laura, which included replacing electrical, mechanical and plumbing systems and building components.



SPECIALTY CONSTRUCTION: COMMERCIAL >  
MORE THAN \$10 MILLION

**C** GEORGE’S WELDING SERVICES INC.

**N** The Estates at Acqualina

**L** Sunny Isles Beach, Florida

**CO** The Trump Group

**A** Cohen, Freedman, Encinosa &  
Associates

**E** CHM Structural Engineers LLC

**GC** Suffolk Construction Co. Inc.

The towers stand over 50 stories high in Sunny Isles Beach. This prime real estate comprised of custom residences has world-class restaurants and five-star amenities, exceeding all expectations as a well-deserved addition to Miami’s Billionaire Row.



SPECIALTY CONSTRUCTION: INDUSTRIAL >  
UP TO \$10 MILLION

**C** CAJUN INDUSTRIES LLC

**N** Entergy Caminada Substation

**L** Grand Isle, Louisiana

**CO** Entergy Louisiana

**A** Dashiell Corp.

**E** Dashiell Corp.

Cajun installed underground electrical, foundations, precast concrete components, miscellaneous steel and modular electrical components in efforts to assist Entergy in achieving resilience to the power grid for the city to prepare for major weather events.



# Eagle Winners

## Specialty Contractors



SPECIALTY CONSTRUCTION: INDUSTRIAL > MORE THAN \$10 MILLION

**C** **APACHE INDUSTRIAL**

**N** LyondellBasell PO/TBA Project

**L** Houston

**CO** LyondellBasell

Apache Industrial erected and demobilized over 10,000 tons of scaffolding, in addition to extensive painting, insulation and fireproofing with over 2.5 million safe work hours on the unit, now the largest propylene oxide and tertiary butyl alcohol facility in the world.

Select Eagle Award-winning projects have received special recognition for their excellence in design-build, sustainability, technology and innovation and productivity.

PRODUCTIVITY  
AWARD WINNER

DESIGN-BUILD  
AWARD WINNER

GREENER TOMORROW  
AWARD WINNER

INNOVATION  
AWARD WINNER

Award Sponsor

**PROCORE**



# Eagle Winners

## General Contractors



COMMERCIAL > UP TO \$5 MILLION

- C** SKILES GROUP
- N** Tom Landry Fitness Center Refresh
- L** Dallas
- CO** Healthcare Realty Trust
- A** Perkins & Will
- E** RLG Consulting Engineers

The project involved renovating a fitness center and creating space for future tenants. It was successfully completed on schedule and without injuries, despite challenges like working in a fully occupied facility and installing remote terminal units with helicopters.

COMMERCIAL > \$5 TO \$10 MILLION

- C** HOLTZ BUILDERS INC.
- N** Wilderness Treehouse Cabins
- L** Wisconsin Dells, Wisconsin
- CO** Wilderness Hotel and Resorts Inc.
- A** Architectural Design Consultants Inc.
- E** General Engineering Co.

In just 7 1/2 months—and six weeks ahead of schedule—Holtz Builders delivered eight extraordinary mountain-modern, three-level, 3,910-square-foot treehouse cabins. This remarkably fast project turnover stands as a beacon of craftsmanship and a testament to HBI’s commitment to achieving excellence.



COMMERCIAL > \$10 TO \$25 MILLION

- C** E.E. REED CONSTRUCTION LP
- N** Intercontinental Terminals Co.
- L** La Porte, Texas
- CO** Intercontinental Terminals Co.
- A** Kirksey Architecture
- E** Henderson Rogers

Despite the complexities involved, E.E. Reed successfully removed half of the existing building while occupied, completed sitework, constructed a new headquarters building and facilitated a seamless transition, while following the ITC plant protocols. The project was completed in an impressive 17-month time frame without interruption of the client’s operations.



# Eagle Winners

## General Contractors



COMMERCIAL > \$25 TO \$100 MILLION

**C** ROGERS-O'BRIEN  
CONSTRUCTION

- N** 1401 Philomena
- L** Austin, Texas
- CO** Gemdale USA Corp.
- A** STG Design
- E** Datum Engineers

The project features a new, five-story, tilt-up medical office building with an impressive architecturally exposed concrete exterior. It sets a benchmark for tilt-wall buildings, incorporating complex designs with multiple formliners and limited paint, elevating construction excellence.



FEDERAL GOVERNMENT/MILITARY >  
UP TO \$15 MILLION

**C** CMS CORP.

- N** Repair Hydrant Tanks 1-2 and 2-1
- L** Andersen Air Force Base, Guam
- CO** Air Force, 772nd Enterprise Sourcing Squadron
- E** Griffith Engineering Services

Awarded in February 2020, this project began during the pandemic shutdown. Completed successfully and safely, the project involved the repair of two 420,000-gallon JP-8 aircraft fuel tanks in a high-humidity environment, including removal of existing fuel and hazardous materials.



FEDERAL GOVERNMENT/MILITARY >  
\$15 TO \$100 MILLION

**C** HELIX ELECTRIC

- N** P-416 Pacific Missile Range Facility Power Grid Consolidation
- L** Kekaha, Hawaii
- CO** Department of the Navy, Naval Facilities Engineering Command
- E** P2S Inc.

The project consolidated the electrical power distribution systems by connecting multiple independent systems into one continuous system to facilitate power transfer from areas with excess renewable energy to other area grids on the installation.





# Eagle Winners

## General Contractors



HEALTH CARE > UP TO \$10 MILLION

- C** DONAHUEFAVRET CONTRACTORS INC.
- N** Thibodaux Regional Health System Operating Room Expansion and Renovation
- L** Thibodaux, Louisiana
- CO** Thibodaux Regional Health System
- A** Washer Hill Lipscomb Cabaniss Architecture (LA)
- E** Smith Seckman Reid Inc.

Thibodaux Regional recognized a need to create additional operating rooms for its existing hospital facility to meet growing demand. The 10,000-square-foot project overcame several challenges and was delivered ahead of schedule.



HEALTH CARE > \$10 TO \$25 MILLION

- C** BRASFIELD & GORRIE
- N** TriStar Centennial Medical Center Endoscopy/Dialysis and Fourth Floor Renovations
- L** Nashville, Tennessee
- CO** HCA Healthcare
- A** Earl Swensson Associates
- E** Enterprise Solutions

The expansion included renovations to the first-floor endoscopy suite, fourth-floor dialysis suite, fourth-floor medical and surgical unit and fourth-floor MSICU unit.



HEALTH CARE > \$25 TO \$100 MILLION

- C** BRASFIELD & GORRIE
- N** UNC Health Blue Ridge Valdese Cancer Center
- L** Valdese, North Carolina
- CO** UNC Health Blue Ridge
- A** DLR Group
- E** McKim & Creed

Achieving 24,420 hours worked with zero incidents, the center includes infusion therapy treatment areas, medical and radiation oncology exam rooms, linear accelerators and advanced imaging to bring superior cancer care to the community.





# Eagle Winners

## General Contractors



HISTORICAL RESTORATION/RENOVATION > UP TO \$25 MILLION

**C** RODGERS BUILDERS INC.

**N** First Presbyterian Church of Charlotte Restoration and Renovations

**L** Charlotte, North Carolina

**CO** First Presbyterian Church of Charlotte

**A** Jenkins Peer Architects

**E** Stanley D. Lindsey and Associates Ltd.

First Presbyterian Church, dating to 1857, stands as one of Charlotte’s oldest landmarks. Rodgers performed interior restorations and renovations to the chancel, choir/organ loft, sanctuary and library, providing improved handicap accessibility, pews, lighting, event space and pipe organ.

HISTORICAL RESTORATION/RENOVATION > \$25 TO \$100 MILLION

**C** BRASFIELD & GORRIE

**N** RIW Plan of Steel LLP

**L** Raleigh, North Carolina

**CO** Grubb Ventures

**A** S9/LS3P

**E** Lynch Mykins

This 26-acre, adaptive reuse project connects Raleigh’s industrial history to its future. The mixed-use project transformed a former steel manufacturing facility into 199,000 square feet of Class-A office space, retail and restaurants.



INDUSTRIAL > UP TO \$5 MILLION

**C** STARCON, A CIANBRO CO.

**N** 1795 Turnaround

**L** Baytown, Texas

**CO** Chevron Phillips Chemical Co.

The project was completed on time, on budget and, most importantly, with zero recordable injuries. This complex project included the mechanical turnaround scope and small capital project tie-ins. Great processes led to great results and a very satisfied client.





# Eagle Winners

## General Contractors



INDUSTRIAL > \$5 TO \$15 MILLION

**C PERFORMANCE CONTRACTORS INC.**

- N** Baton Rouge Advantaged Crude Expansion  
**L** Baton Rouge, Louisiana  
**CO** ExxonMobil  
**E** Worley

The expansion enabled the refinery to process additional, economically attractive, advantaged Western Canadian crude oil over waterborne heavy crude.



INDUSTRIAL > \$15 TO \$25 MILLION

**C CAJUN INDUSTRIES**

- N** Plaquemines LNG Early Works Piling  
**L** Port Sulphur, Louisiana  
**CO** Venture Global  
**E** KZJV

Cajun successfully completed multiple piling scopes for the project, including the design-build ETW flood protection system, the driven pile test pile program and the marine terminal bridge piling.



INDUSTRIAL > \$25 TO \$100 MILLION

**C BI-CON SERVICES INC.**

- N** Williams Station 180  
**L** Unionville, Virginia  
**CO** Transcontinental Gas Pipeline Co. LLC  
**E** Bi-Con Engineering LLC

The project, upgraded with Solar Turbines' Titan 130s, designed by Bi-Con Engineering and executed by Bi-Con Services, emphasized a replicable approach. Innovative strategies like above-grade piping, helical piles and off-site prefabrication reduced project budget and timelines.





# Eagle Winners

## General Contractors



### INFRASTRUCTURE: HEAVY

- C** CIANBRO
- N** Veranda Street Bridge Replacement
- L** Portland, Maine
- CO** Maine Department of Transportation
- E** HNTB

The project included the accelerated replacement of the I-295 bridge over Veranda Street in Portland, Maine. The new bridge superstructure was constructed adjacent to I-295 and moved into position during a 60-hour highway closure weekend using remote-controlled, self-propelled modular transporters.



### INSTITUTIONAL > UP TO \$5 MILLION

- C** BRINDLEY CONSTRUCTION LLC
- N** Guntersville Gym Renovation and Walking Trail Improvements
- L** Guntersville, Alabama
- CO** City of Guntersville
- A** Emmett D. Smith & Associates, Architect, P.C.
- E** Harpeth Park Engineering

The outdated gymnasium at Guntersville Parks and Recreation Center was in dire need of a fresh start. The renovation breathed new life into the space, transforming and redefining the facility.



### INSTITUTIONAL > \$5 TO \$10 MILLION

- C** NOBLE TEXAS BUILDERS LLC
- N** South Texas Ecotourism Center
- L** Laguna Vista, Texas
- CO** Cameron County
- A** Megamorphosis
- E** Green, Rubiano & Associates

Located on 10 acres in the South Texas coastal wetlands, the center features a classroom building, an amphitheater, an outdoor classroom, bird blinds, outdoor exhibits and a stunning elevated boardwalk. The freeze of 2021, constantly saturated sites and the pandemic added to the project's complexities.



# Eagle Winners

## General Contractors



### INSTITUTIONAL > \$10 TO \$25 MILLION

#### **C KAPLAN CONSTRUCTION**

- N** Trust Early Learners
- L** Brookline, Massachusetts
- CO** Martin Trust Partnership in Education for Early Learners
- A** CBT Architects
- E** Wozny/Barbar & Associates

Following an intensive, two-year preconstruction phase, Kaplan successfully constructed a 20,000-square-foot, five-story early education center for underserved children in the city while negotiating the logistical constraints of a tight urban footprint and the pandemic.

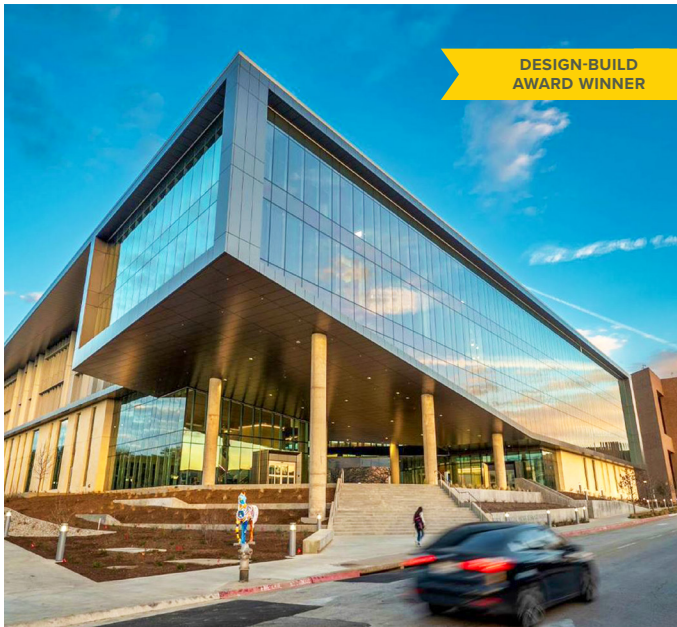


### INSTITUTIONAL > \$25 TO \$50 MILLION

#### **C FCI CONSTRUCTORS INC.**

- N** Littleton Public Schools EPIC Campus
- L** Littleton, Colorado
- CO** Littleton Public Schools
- A** Cuningham
- E** Structural: KL&A; Civil: CORE Consultants

With 237,196 hours worked and no lost time to injuries, FCI converted an auto dealership to a technically advanced educational space, with 176 helical piers added under the existing building. FCI achieved total cost of ownership before completion date and returned \$300,000 to the client.



### INSTITUTIONAL > \$50 TO \$100 MILLION

#### **C TURNER CONSTRUCTION CO.**

- N** The University of Texas at Arlington, School of Social Work and Smart Hospital Building
- L** Arlington, Texas
- CO** The University of Texas at Arlington
- A** SmithGroup
- E** SmithGroup

The recently constructed, 156,000-square-foot building, a collaborative effort between SmithGroup and Turner in a design-build partnership, integrates various components. These include adaptable classrooms equipped with state-of-the-art technology for enriched learning, teaching and research laboratories, faculty and staff offices, student engagement spaces, study areas and infrastructure support spaces.



# Eagle Winners

## General Contractors



MEGA-PROJECT > \$100 TO \$160 MILLION

- C** BRASFIELD & GORRIE
- N** United States Courthouse, San Antonio
- L** San Antonio
- CO** U.S. General Services Administration
- A** SLAM (formerly Heery/CBRE)
- E** Halff Associates

The 245,000-square-foot, fast-track design-build courthouse includes eight courtrooms following the General Services Administration’s Design/Construction Excellence tenets: LEED v4 Gold, SITES Silver and BIM Design Guide. Minority- and women-owned firms accounted for 28% of the subcontracted scope and there were zero lost-time incidents in 846,000 workhours.

MEGA-PROJECT > OVER \$160 MILLION

- C** CADDELL CONSTRUCTION
- N** Design-Build U.S. Consulate
- L** Hyderabad, India
- CO** U.S. State Department’s Bureau of Overseas Buildings Operations
- A** Integrus Architecture

Caddell was responsible for the design and construction of a new, 217,000-square-foot diplomatic complex that included extreme construction challenges: architectural elements marrying structural requirements, logistical labyrinths, high-tech security, snakes and sacred rocks.



PUBLIC WORKS/ENVIRONMENTAL

- C** HELIX ELECTRIC
- N** Joseph Jensen Water Treatment Plant Electrical Upgrade Stage 2
- L** Sylmar, California
- CO** The Metropolitan Water District of Southern California
- A** The Metropolitan Water District of Southern California
- E** The Metropolitan Water District of Southern California

The project consisted of upgrading and updating the plant’s 50-year-old electrical system. With the capacity to process 750 million gallons of water every day, Jensen is Metropolitan’s largest treatment plant and the largest west of the Mississippi River.





# Eagle Winners

## General Contractors



RENOVATION > \$5 TO \$15 MILLION

**C MW BUILDERS**

- N** Woodside Health Club Renovation
- L** Westwood, Kansas
- CO** Tanner & White Properties
- A** Hufft Projects
- E** Smith & Boucher

This project renovation reimagined Woodside’s North and South clubs. The South facility underwent abatement and both were brought up to current codes to improve functionality, layout and comfort to provide members with immersive, audiovisual fitness experiences and exclusive training options.

RENOVATION > \$15 TO \$100 MILLION

**C ADOLFSON & PETERSON CONSTRUCTION**

- N** Rockwall County Jail Addition and Renovation
- L** Rockwall, Texas
- CO** Broaddus & Associates/Rockwall County
- A** DLR Group
- E** Civil: Kimley Horn; MEP: Brandt Cos. LLC

Adolfson & Peterson completed an 82,943-square-foot expansion, adding 204 new beds, and renovated the existing jail facility. The development includes direct and indirect supervision in new, two-story cell housing units, an intake room, a visitation room, a kitchen, a laundry and 16-bed medical and 20-bed mental health facilities.



RESIDENTIAL > MULTI-FAMILY AND CONDOMINIUM

**C CORE TECH INTERNATIONAL CORP.**

- N** Summer Breeze I
- L** Radio Barrigada, Guam
- CO** Summer Breeze I DE LLC
- A** Taniguchi Ruth Makio Architects

The project is a low-income housing development consisting of 64 one- to four-bedroom units across eight buildings equipped with energy-efficient appliances, LED lighting, a solar-powered water heater and essential facilities like a community center and basketball court.



# Eagle Winners

## General Contractors



### RESIDENTIAL > SINGLE-FAMILY

**C** MARTIK BROTHERS INC.

**N** Pearl Residence

**L** Farmington, Pennsylvania

**CO** Confidential

**A** OBA Design LLC

**E** Atlantic Engineering Services

The renovation and addition residential project included intricate topography, intense structural needs and modern interior design finishes. The project required great communication and team effort to create a simple concept and blossom it into the ultimate residential campus.

### SPECIAL PROJECTS > UP TO \$10 MILLION

**C** MOORE INDUSTRIES

**N** ExxonMobil Quality Assurance Laboratory Roof Replacement

**L** Baton Rouge, Louisiana

**CO** ExxonMobil

Moore Industries was contracted by ExxonMobil to perform the design, demolition and replacement of a 40,000-square-foot modified bitumen roofing system, rooftop HVAC equipment, exhaust fans, electrical conduit/wire and structural steel for a refinery laboratory, which remained in operation 24/7.



### SPECIAL PROJECTS > \$10 TO \$100 MILLION

**C** BROADMOOR LLC

**N** Audubon Aquarium and Insectarium

**L** New Orleans

**CO** Audubon Commission, in conjunction with Audubon Nature Institute

**A** Eskew+Dumez+Ripple

**E** Morphy Makofsky Inc.

This multiphase renovation and expansion of the existing aquarium revitalized this iconic New Orleans landmark and community resource. The unique project merged the two exhibits with selective structural demolition and new curtainwall systems.

# Pyramid Winners

## Specialty Contractors

### ELECTRICAL: COMMERCIAL > \$2 TO \$10 MILLION

**C WINDSOR ELECTRIC CO.**

- N** Johns Hopkins University Bloomberg School of Public Health MEP Upgrades
- L** Baltimore
- CO** Johns Hopkins University
- A** Ballinger
- E** Ballinger
- GC** The Whiting-Turner Contracting Co.

### ELECTRICAL: INDUSTRIAL > UP TO \$2 MILLION

**C TRIAD ELECTRIC & CONTROLS**

- N** Petro 2 Flare Gas Recovery Unit Project
- L** Sulphur, Louisiana
- CO** Westlake Corp.
- A** Levingston Engineering
- E** Levingston Engineering

### ELECTRICAL: INDUSTRIAL > \$2 TO \$10 MILLION

**C INTERSTATES**

- N** Midwest PMS Cattle Feed Facility
- L** Hereford, Texas
- CO** Midwest PMS
- E** Interstates

### ELECTRICAL > MORE THAN \$10 MILLION

**C GAYLOR ELECTRIC**

- N** KCVG Amazon Air Hub
- L** Erlanger, Kentucky
- CO** Amazon
- A** AECOM
- E** Prime Engineering
- GC** The Whiting-Turner Contracting Co.

### EXTERIORS > EXTERIOR FINISHES

**C MOORE INDUSTRIES**

- N** ExxonMobil Refinery Main Office Exterior Painting and Upgrades
- L** Baton Rouge, Louisiana
- CO** ExxonMobil

### EXTERIORS > MASONRY, PRECAST OR STONE

**C TELLIGENT MASONRY LLC**

- N** Baltimore Peninsula
- L** Baltimore
- CO** Weller Development
- A** Morgan Gick McBeath Associates PC
- GC** The Whiting-Turner Contracting Co.

### MECHANICAL: COMMERCIAL > UP TO \$2 MILLION

**C M&D MECHANICAL CONTRACTORS INC.**

- N** Huntsville Hospital Sivley Tower Imaging Center Fit-Out
- L** Huntsville, Alabama
- CO** Huntsville Hospital
- A** Chapman Sisson Architects
- E** CHB Mechanical
- GC** Robins and Morton

### MECHANICAL: COMMERCIAL > \$2 TO \$10 MILLION

**C MYCO MECHANICAL INC.**

- N** Colonial Middle School
- L** Plymouth Meeting, Pennsylvania
- CO** Colonial School District
- A** KCBA Architects
- E** Snyder Hoffman Associates Inc.

### MECHANICAL: INDUSTRIAL > UP TO \$2 MILLION

**C MANHATTAN MECHANICAL SERVICES**

- N** Carus ML Piping
- L** LaSalle, Illinois
- CO** Carus
- E** BSI Engineering

### MECHANICAL: INDUSTRIAL > \$2 TO \$10 MILLION

**C M&D MECHANICAL CONTRACTORS INC.**

- N** Revitalize Pressurants and Propellants Distribution Systems Sitewide Phase 2
- L** NASA Marshall Space Flight Center, Alabama
- CO** NASA Pressurants & Propellants Branch
- E** Accura Rosser JV

# Pyramid Winners

## Specialty Contractors

### MECHANICAL > MORE THAN \$10 MILLION

- C COMFORT SYSTEMS USA (SOUTHEAST) INC.**
  - N** Advanced Munitions Technology Complex
  - L** Eglin Air Force Base, Florida
  - CO** U.S. Army Corp of Engineers
  - A** Burns & McDonnell
  - E** Burns & McDonnell
  - GC** Hensel Phelps Construction Co.

### SITework/LANDSCAPE/HARDSCAPE



- C WONDRA CONSTRUCTION INC.**
  - N** Mason Creek Stream Restoration
  - L** Hartland, Wisconsin
  - CO** Tall Pines Conservancy
  - A** Stantec Consulting Services Inc.
  - E** Stantec Consulting Services Inc.
  - GC** Wondra Construction Inc.

### SPECIALTY CONSTRUCTION: COMMERCIAL > UP TO \$2 MILLION



- C TINY'S DEMOLITION & RECYCLING**
  - N** 200 Broadway New Bar/Restaurant
  - L** Nashville, Tennessee
  - CO** AJ Capital Partners
  - A** STG Design
  - E** Structural Design Group
  - GC** Bell Construction Co.

### SPECIALTY CONSTRUCTION: COMMERCIAL > \$2 TO \$10 MILLION

- C AGGREGATE TECHNOLOGIES INC.**
  - N** Sam Houston Tollway Ship Channel Bridge Replacement
  - L** Houston
  - CO** Harris County Tollway Authority

### SPECIALTY CONSTRUCTION: INDUSTRIAL > UP TO \$10 MILLION



- C GROUP CONTRACTORS LLC**
  - N** Jackson Compressor Station Reversal and Cooler Replacement Project
  - L** Flowood, Mississippi
  - CO** Boardwalk Pipeline

### SPECIALTY CONSTRUCTION: INDUSTRIAL > MORE THAN \$10 MILLION

- C BAKER GULF COAST INDUSTRIAL LLC**
  - N** Chevron REG GTB Piling Project
  - L** Geismar, Louisiana
  - CO** Chevron REG



COMMERCIAL > \$5 TO \$10 MILLION

**C WAGMAN CONSTRUCTION INC.**

- N** David H. Martin Excavating  
Office Expansion and Renovation
- L** Chambersburg, Pennsylvania
- CO** David H. Martin Excavating Inc.
- A** Newcomer Associates
- E** Newcomer Associates



COMMERCIAL > \$10 TO \$25 MILLION

**C SR CONSTRUCTION INC.**

- N** The Fertility Center of Las Vegas
- L** Las Vegas
- CO** Durango Basin
- A** PGAL LLC
- E** IMEG Corp.



COMMERCIAL > \$25 TO \$100 MILLION

**C ROBINS & MORTON**

- N** Redstone Gateway 8200 and 8300
- L** Huntsville, Alabama
- CO** Corporate Office Properties Trust
- A** Powers Brown Architecture
- E** LJB Inc.

FEDERAL GOVERNMENT/MILITARY >  
UP TO \$15 MILLION

**C POINTER CONSTRUCTION GROUP LLC**

- N** 10AB Mental Health Ward Renovation
- L** Miami
- CO** U.S. Department of Veterans Affairs
- A** JPA Architecture
- E** MES Group



FEDERAL GOVERNMENT/MILITARY >  
\$15 TO \$100 MILLION

**C CMS CORP.**

- N** Renovate and Expansion of Hangar 6,  
Building 18110
- L** Andersen Air Force Base, Guam
- CO** 772nd Enterprise Sourcing Squadron/PKA-C

HEALTH CARE > UP TO \$10 MILLION

**C BENCHMARK CONSTRUCTION CO. INC.**

- N** Di and Dallas Krapf Interfaith Chapel
- L** Hershey, Pennsylvania
- CO** Penn State Health Milton S. Hershey Medical  
Center
- A** Alexander Design Studio
- E** Martin Rogers Engineering Group



HEALTH CARE > \$10 TO \$25 MILLION

**C DONAHUEFAVRET CONTRACTORS INC.**

- N** Bayou Bend Health System Wellness Center
- L** Franklin, Louisiana
- CO** Hospital Service District No. 1 of St. Mary Parish  
dba Bayou Bend Health System
- A** Grace Hebert Curtis Architects, APAC

HEALTH CARE > \$25 TO \$100 MILLION

**C JORDAN FOSTER CONSTRUCTION**

- N** Ysleta Del Sur Pueblo Clinic
- L** El Paso, Texas
- CO** Ysleta Del Sur Pueblo
- A** Carl Daniel Architects
- E** HKN Engineers

HISTORICAL RESTORATION/RENOVATION >  
UP TO \$25 MILLION



**C SDV CONSTRUCTION INC.**

- N** Historic Curry County Courthouse Addition  
and Renovation
- L** Clovis, New Mexico
- CO** Curry County
- A** NCA Architects
- E** Chavez Grieves



# Pyramid Winners

## General Contractors

### HISTORICAL RESTORATION/RENOVATION > \$25 TO \$100 MILLION



- C IMPETUS**
- N** The Carrollton
- L** New Orleans
- CO** Felicity Property Co & Liberty Senior Living a Joint Venture
- A** Waggonner & Ball Architects
- E** Structural: Batture LLC; MEP: Hi-Tech Electric Inc.; Civil: SEF Engineers

### INDUSTRIAL > UP TO \$5 MILLION



- C PERFORMANCE CONTRACTORS INC.**
- N** SC-1 Flare Recovery Project
- L** Hahnville, Louisiana
- CO** Dow Chemical Co.

### INDUSTRIAL > \$5 TO \$15 MILLION



- C THE WEITZ CO.**
- N** Cargill Modular Research Feed Mill
- L** Elk River, Minnesota
- CO** Cargill Inc.
- A** Weitz Professional Services LLC
- E** Weitz Professional Services LLC

### INDUSTRIAL > \$15 TO \$25 MILLION



- C TURNER INDUSTRIES GROUP LLC**
- N** Vineyard Wind 1-Haliade-X Blade Rack Fabrication
- L** New Iberia, Louisiana
- CO** GE
- E** Temporary Works Design

### INDUSTRIAL > \$25 TO \$100 MILLION



- C KEEN PROJECT SOLUTIONS LLC**
- N** Beck's Hybrids East Soybean Tower
- L** Atlanta, Indiana
- CO** Beck's Hybrids
- A** KJG Architecture Inc.

### INFRASTRUCTURE: HEAVY



- C BRASFIELD & GORRIE**
- N** Dearborn Diversion Project
- L** Upstate, South Carolina
- CO** Duke Energy
- E** HDR Inc.

### INSTITUTIONAL > \$5 TO \$10 MILLION



- C HASKELL**
- N** University of Florida, Florida Museum of Natural History Special Collections Building
- L** Gainesville, Florida
- CO** University of Florida
- A** Haskell
- E** TLC Engineering Solutions

### INSTITUTIONAL > \$10 TO \$25 MILLION



- C BRASFIELD & GORRIE**
- N** Ravenscroft School Olander Center for Student Life at the A.E. Finley Activity Center
- L** Raleigh, North Carolina
- CO** Ravenscroft School Inc.
- A** Little
- E** Little

### INSTITUTIONAL > \$25 TO \$50 MILLION

- C BROADMOOR LLC**
- N** New Orleans Career Center
- L** New Orleans
- CO** Louisiana Recovery School District
- A** SCNZ Architects LLC
- E** Julien Engineering & Consulting Inc.

### INSTITUTIONAL > \$50 TO \$100 MILLION



- C HENLEY CONSTRUCTION CO. INC.**
- N** Oakton High School
- L** Vienna, Virginia
- CO** Fairfax County Public Schools
- A** Perkins Eastman Architects
- E** Strickler Associates Ltd.

# Pyramid Winners

## General Contractors

### MEGA-PROJECT > \$100 TO \$160 MILLION

**C RODGERS BUILDERS INC.**

- N** Atrium Health Pineville Palmetto Bed Tower
- L** Charlotte, North Carolina
- CO** Atrium Health
- A** DLR
- E** WSP USA Buildings Inc.

### RESIDENTIAL > MULTI-FAMILY AND CONDOMINIUM



**C ROGERS-O'BRIEN CONSTRUCTION**

- N** NOVEL Turtle Creek
- L** Dallas
- CO** Crescent Communities
- A** WDG Architecture Dallas
- E** Jeff Reed

### MEGA-PROJECT > OVER \$160 MILLION



**C BRASFIELD & GORRIE**

- N** The New Baptist Hospital Campus
- L** Pensacola, Florida
- CO** Baptist Health Care
- A** Gresham Smith
- E** Smith Seckman Reid

### SPECIAL PROJECTS > \$10 TO \$100 MILLION



**C BRASFIELD & GORRIE**

- N** HudsonAlpha Institute for Biotechnology Greenhouse and Discovery Life Sciences Building
- L** Huntsville, Alabama
- CO** HudsonAlpha Institute for Biotechnology
- A** Fuqua & Partners Architects

### RENOVATION > UP TO \$5 MILLION



**C BRINDLEY CONSTRUCTION LLC**

- N** Giles County Chamber Renovations
- L** Pulaski, Tennessee
- CO** Giles County Chamber of Commerce

### RENOVATION > \$5 TO \$15 MILLION

**C MARTIN-HARRIS CONSTRUCTION LLC**

- N** Cathedrale Restaurant at Aria Hotel and Casino
- L** Las Vegas
- CO** MGM Resorts Intl.
- A** Bloc9 Architecture LLC
- E** Revolution Engineering

### RENOVATION > \$15 TO \$100 MILLION



**C HASKELL**

- N** Fleet Readiness Center Hangar 101
- L** Jacksonville, Florida
- CO** Fleet Readiness Center Southeast
- A** Haskell
- E** Haskell

**A Foundation of Safety**

2023 NATIONAL  
SAFETY EXCELLENCE  
AWARDS

From exceptional safety records to rigorous training and education programs, winners of the National Safety Excellence Awards excelled in all areas of ABC's STEP Safety Management System, demonstrating an extraordinary commitment to industry-leading health and safety.

---

Presenting Sponsor





# Panel of Judges

**Michael W. Bennett**

Vice President  
The Cianbro Cos.  
Pittsfield, Maine

**John Bolt**

Vice President, HSE  
S&B Engineers and Constructors Ltd.  
Houston

**Paul Crivac**

Director of Safety  
Three Rivers Corp.  
Midland, Michigan

**Charles E. Davis III**

Vice President, Operations/Risk  
Management  
Fly & Form Concrete Structures Inc.  
Atlanta

**Brian Fish**

General Superintendent  
Hensel Phelps  
Tysons Corner, Virginia

**Phillip Ireland**

Director of Safety  
Benchmark Construction Co. Inc.  
Lancaster, Pennsylvania

**Melanie Laird**

Chief Strategy Officer  
Field Control Analytics  
Dallas

**Eric Simmons, ARM, CSP**

Vice President of Risk Management  
Helix Electric  
San Diego

**Shelley Sutton, CSHO**

Vice President  
hth cos. inc.  
Union, Missouri

**James K. Thompson**

Director of EH&S  
Kwest Group LLC  
Perrysburg, Ohio

**Frank Trujillo**

Executive Director of Risk Management  
Coakley & Williams Construction  
Bethesda, Maryland

# Pinnacle Winners

## NAICS 236 GENERAL CONTRACTOR

---



**AUSTIN COMMERCIAL LP**  
Dallas



**CMS CORP.**  
Bargersville, Indiana



**FLINTCO LLC**  
Tulsa, Oklahoma



**HASKELL**  
Jacksonville, Florida



**HENSEL PHELPS**  
Greeley, Colorado



**MANHATTAN CONSTRUCTION CO.**  
Tulsa, Oklahoma



**RUSH CONSTRUCTION INC.**  
Titusville, Florida



**SAMET**  
Greensboro, North Carolina



**SDV CONSTRUCTION INC.**  
Albuquerque, New Mexico



**STELLAR GROUP INC.**  
Jacksonville, Florida



**THREE RIVERS CORP.**  
Midland, Michigan

**WARFEATHER**  
Coweta, Oklahoma

**NAICS 237**  
HEAVY AND CIVIL  
ENGINEERING CONTRACTORS

---



**CIANBRO**  
Pittsfield, Maine



**PERFORMANCE CONTRACTORS INC.**  
Baton Rouge, Louisiana

**NAICS 238**  
SPECIALTY CONTRACTORS

---



**HELIX ELECTRIC**  
San Diego



**HTH COS. INC.**  
Union, Missouri



**INTERSTATES**  
Sioux Center, Iowa



**KWEST GROUP LLC**  
Perrysburg, Ohio



**METROPOWER INC.**  
Tucker, Georgia



**UNITED GROUP SERVICES INC.**  
Cincinnati

# Excellence Winners

## NAICS 236 GENERAL CONTRACTOR

---

**EBCO GENERAL CONTRACTOR LTD.**  
Cameron, Texas



**FORRESTER CONSTRUCTION**  
Rockville, Maryland

**PACIFIC RIM CONSTRUCTION INC.**  
Tamuning, Guam



**ROY ANDERSON CORP**  
Gulfport, Mississippi

## NAICS 237 HEAVY AND CIVIL ENGINEERING CONTRACTORS

---



**BROWN & ROOT INDUSTRIAL SERVICES LLC**  
Baton Rouge, Louisiana



**S&B ENGINEERS AND CONSTRUCTORS LTD.**  
Houston

## NAICS 238 SPECIALTY CONTRACTORS

---



**DECCO INC.**  
Nashua, New Hampshire



**GAYLOR ELECTRIC INC.**  
Noblesville, Indiana

# Merit Winners

## NAICS 236 GENERAL CONTRACTOR

---

**ALLIANCE INDUSTRIAL GROUP LLC**  
Lumberton, Texas



**GRAYCOR SOUTHERN INC.**  
Kennesaw, Georgia



**POETTKER CONSTRUCTION CO.**  
Charlotte, North Carolina



**SUMMIT INDUSTRIAL CONSTRUCTION LLC**  
Houston

**WOOD GROUP USA INC. – US SOUTH**  
Clute, Texas

## NAICS 237 HEAVY AND CIVIL ENGINEERING CONTRACTORS

---



**BARRIERE CONSTRUCTION CO. LLC – A CRH CO.**  
LaPlace, Louisiana

**HUDGINS CONTRACTING CORP.**  
Hampton, Virginia



**RES CONTRACTORS LLC**  
Plattenville, Louisiana

## NAICS 238 SPECIALTY CONTRACTORS

---

**AGGREGATE TECHNOLOGIES INC.**  
Houston, Texas



**FAITH TECHNOLOGIES INC.**  
Menasha, Wisconsin

**APPLIED CONSTRUCTION SOLUTIONS**  
Meadowbrook, West Virginia

**NICKLE ELECTRICAL COS.**  
Newark, Delaware



**CHAMBERLIN ROOFING & WATERPROOFING**  
Houston



**SOBIE CO. INC.**  
Caledonia, Michigan



**STARCON, A CIANBRO CO.**  
La Porte, Texas

**COLLIS ROOFING**  
Longwood, Florida



**TDINDUSTRIES INC.**  
Dallas

**Championing an Inclusive,  
Diverse and Meritocratic Industry**

# 2023 NATIONAL INCLUSION, DIVERSITY AND MERIT EXCELLENCE AWARD RECIPIENTS

The ABC National Inclusion, Diversity and Merit Excellence Awards recognize members that display exemplary inclusion, diversity and meritocratic leadership in their workforce, supply chain and community with best-in-class recruitment policies, retention practices and education and mentoring programs.

---

Presenting Sponsor



# Panel of Judges

**Angela Gardner**

Director of Business Development  
& Marketing  
Hill Electric  
Anderson, South Carolina

**Crissy Ingram, CAE**

Executive Director  
National Association of Women in  
Construction  
Fort Worth, Texas

**Christi Powell**

Women Business Enterprise Division  
84 Lumber Co.  
Eighty Four, Pennsylvania

**Irma Wehmeyer**

Division Manager  
hth cos. inc.  
Union, Missouri

## Winners

### ASSOCIATE/SUPPLIER

**UNITED RENTALS INC.**  
Stamford, Connecticut

### GENERAL CONTRACTOR (Over \$33 million)

**TURNER CONSTRUCTION CO.**  
New York

### GENERAL CONTRACTOR (Under \$33 million)

**JOHN B. CRUZ CONSTRUCTION CO. INC.**  
Roxbury, Massachusetts

### SUBCONTRACTOR



**INTERSTATES**

Sioux Center, Iowa

2024  
CONTRACTOR  
OF THE YEAR



**KWEST**  
GROUP

---

Presenting Co-Sponsors





# Kwest Group: Putting People First

The ABC 2024 Contractor of the Year is Kwest Group—an employee-owned heavy industrial contractor headquartered in Perrysburg, Ohio, that does upwards of \$130 million in business per year. As Contractor of the Year, Kwest has demonstrated an extraordinary commitment to ABC’s mission and values, including safety, quality, workforce development, community engagement, advocacy and the merit-shop philosophy.

Kwest was founded in Port Clinton, Ohio, in 2003 by managing partners Ryan Odendahl and Mark Murray, operating with six employees out of a double-wide office trailer close to Lake Erie. Barely 5 years later, their original plan to grow Kwest into a regional player in northwest Ohio was derailed by the Great Recession, which forced the company to pursue work in other states, beginning a pavement-rehabilitation project at a defense distribution depot in Texarkana.

Today, Kwest has a full-time workforce of about 350 people and is certified to work in 41 states, with markets of expertise that include energy/renewables, petrochemical/industrial, rail and federal/public. In addition to its Perrysburg headquarters, the company maintains regional offices in Dublin, Ohio; Roanoke, Virginia; and Dallas, Texas. Odendahl serves as president and CEO, while Murray is retired but continues to serve as board chair.

Kwest has achieved success by putting its people first—hiring the best candidates, prioritizing safety on every jobsite, providing the best training and professional-development opportunities and offering industry-leading benefits based on a commitment to total human health, including a groundbreaking video series called “Under the Hard Hat” that spotlights the issue of mental health in the construction industry. As a former United States Marine, Odendahl has drawn on the Corps’ bottom-up leadership model to create Kwest’s management culture, which gives front-line employees wide autonomy in accomplishing goals.

The results speak for themselves. Kwest is an ABC Top Performer, an ABC Accredited Quality Contractor, a regular winner in ABC’s national and chapter Excellence in Construction® Awards programs and a recipient of Diamond-level recognition from ABC’s STEP Safety Management System—in addition to achieving Platinum-level success in ABC’s National Safety Excellence Awards program. Odendahl has chaired ABC’s national Health and Safety and Workforce Development committees, while Director of Strategy and Development Brandon Jordan chairs the Business Development Committee and Vice President—Integrator Dan Tack serves on Workforce Development. And Director of EH&S Jim Thompson, previously chaired and now serves on Health and Safety, was integrally involved in developing ABC’s Total Human Health Initiative.

Barely 21 years old, Kwest Group has already achieved more than companies two or three times its age. Who knows what its third decade will bring.

## INDEX OF ALL WINNERS

Adams Group	6	Karsten Interior Services LP	6
Adolfson & Peterson Construction	19	Keen Project Solutions LLC	24
Aggregate Technologies Inc.	22, 31	Kwest Group	29, 34, 35
Alliance Industrial Group LLC	31	M&D Mechanical Contractors Inc.	7, 21
Apache Industrial	10	Manhattan Construction Co.	28
Applied Construction Solutions	31	Manhattan Mechanical Services	21
Austin Commercial LP	28	Martik Brothers Inc.	20
Baker Gulf Coast Industrial LLC	22	Martin-Harris Construction LLC	25
Barriere Construction Co. LLC – A CRH Co.	31	Merit Electrical Group Inc.	4
Benchmark Construction Co. Inc.	23	MetroPower Inc.	29
Bi-Con Services Inc.	15	MMR Constructors Inc.	5
Big D Metalworks	8	Moore Industries	9, 20, 21
Brasfield & Gorrie	13, 14, 18, 24, 25	MW Builders	19
Brindley Construction LLC	16, 25	MYCO Mechanical Inc.	21
Broadmoor LLC	20, 24	Nickle Electrical Cos.	31
Brown & Root Industrial Services LLC	30	Noble Texas Builders LLC	16
Caddell Construction	18	Pacific Rim Construction Inc.	30
Cajun Industries LLC	9, 15	Performance Contractors Inc.	8, 15, 24, 29
Capital Industries LLC	7	Poettker Construction Co.	31
Chamberlin Roofing & Waterproofing	31	Pointer Construction Group LLC	23
Cianbro	16, 29	Premier Precast	6
CMS Corp.	12, 23, 28	RES Contractors LLC	31
Collis Roofing	31	Robins & Morton	23
Comfort Systems USA (Southeast) Inc.	22	Rodgers Builders Inc.	14, 25
Core Tech International Corp.	19	Rogers-O'Brien Construction	12, 25
DECCO Inc.	30	Roy Anderson Corp	30
DonahueFavret Contractors Inc.	13, 23	RUSH Construction Inc.	28
Durr Heavy Construction LLC	8	S&B Engineers and Constructors Ltd.	30
E.E. Reed Construction LP	11	Samet	28
EBCO General Contractor Ltd.	30	SDV Construction Inc.	23, 28
Faith Technologies Inc.	31	Skiles Group	11
FCI Constructors Inc.	17	Sobie Co. Inc.	31
Flintco LLC	28	SR Construction Inc.	23
Forrester Construction	30	Starcon, a Cianbro Co.	14, 31
Gaylor Electric	21, 30	Stellar Group Inc.	28
George's Welding Services Inc.	9	Summit Industrial Construction LLC	31
Graycor Southern Inc.	31	TDIndustries Inc.	31
GROUP Contractors LLC	22	Telligent Masonry LLC	21
Haley-Greer Inc.	5	The Weitz Co.	24
Haskell	24, 25, 28	Three Rivers Corp.	28
Helix Electric	4, 12, 18, 29	Tiny's Demolition & Recycling	22
Henley Construction Co. Inc.	24	Triad Electric & Controls	4, 21
Hensel Phelps	28	Turner Construction Co.	17, 33
Holtz Builders Inc.	11	Turner Industries Group LLC	24
hth cos. inc.	29	United Group Services Inc.	29
Hudgins Contracting Corp.	31	United Rentals Inc.	33
Impetus	24	Wagman Construction Inc.	23
Interstates	21, 29, 33	Warfeather	28
ISC Constructors LLC	5	Windsor Electric Co.	21
John B. Cruz Construction Co. Inc.	33	Wondra Construction Inc.	22
Jordan Foster Construction	23	Wood Group USA Inc. – US South	31
Kaplan Construction	17		

# Thank You to Our Program Sponsors

---

National Excellence in Construction Awards  
Program Sponsor

---



---

National Safety Excellence Awards  
Presenting Sponsor

---



---

National Inclusion, Diversity and Merit Excellence Awards  
Presenting Sponsor

---



---

National Contractor of the Year  
Presenting Co-Sponsors

---





440 First St. NW, Suite 200  
Washington, DC 20001  
(202) 595-1505  
abc.org

**#ABCMeritShopProud**  
**@ABCNational**