



28th Annual Excellence in Construction® Awards

Top Construction Projects
Exemplary Safety Leaders
Champions of Diversity



National Excellence in Construction Awards

PANEL OF JUDGES / 3

Eagle Winners

SPECIALTY CONTRACTORS / 4

GENERAL CONTRACTORS/CONSTRUCTION MANAGEMENT / 9

Pyramid Winners

SPECIALTY CONTRACTORS / 20

GENERAL CONTRACTORS/CONSTRUCTION MANAGEMENT / 21

National Safety Excellence Awards

PANEL OF JUDGES / 25

Pinnacle Winners

GENERAL CONTRACTOR / 26

HEAVY AND CIVIL ENGINEERING CONTRACTOR / 26

SPECIALTY CONTRACTOR / 26

Excellence Winners

GENERAL CONTRACTOR / 26

HEAVY AND CIVIL ENGINEERING CONTRACTOR / 27

SPECIALTY CONTRACTOR / 27

Merit Winners

GENERAL CONTRACTOR / 27

HEAVY AND CIVIL ENGINEERING CONTRACTOR / 27

SPECIALTY CONTRACTOR / 27

National Diversity Excellence Awards

PANEL OF JUDGES / 29

Diversity Winners

GENERAL CONTRACTOR OVER \$33 MILLION / 29

GENERAL CONTRACTOR UNDER \$33 MILLION / 29

SMALL & EMERGING CONTRACTOR / 29

SUBCONTRACTOR / 29

SUPPLIER / 29

ASSOCIATE / 29

Contractor of the Year Award

Contractor of the Year / 30

2017 STEP DIAMOND RECIPIENTS / 31

INDEX OF ALL WINNERS / 32

PROGRAM SPONSORS / 33



Accredited Quality Contractor

is a credential for companies* that have documented their commitment to five key areas of corporate responsibility: quality, safety, employee benefits, training and community relations.

Presented by



*Chapter Specific

Built on Excellence

2017 EXCELLENCE IN CONSTRUCTION AWARD RECIPIENTS

The Excellence in Construction Awards honor the skill and creativity of the entire team—contractor, owner, architect and engineer—responsible for an outstanding merit shop construction project. The 2017 award recipients exceeded expectations in innovation and quality.

Presenting Sponsor



Panel of Judges

JOANNE ARNOLD

Director of Research
Building Owners and Managers Association International
Washington, D.C.

MICHAEL R. BEGLINGER

Senior Supervisor Construction Management
Construction Division
Smithsonian Facilities
Washington, D.C.

MICHAEL H. CASTEN

Founder & Principal
Construction Concepts
North Myrtle, N.C.

MARK GEDRIS

Vice President of Marketing & Membership
Construction Management Association of America
McLean, Va.

PATRICK L. GLON

Professor Emeritus
Purdue University
Sturgis, Mich.

CHUCK HAWLEY, AIA

Principal
RPH Architecture
Annapolis, Md.

JJ MCCARTHY, LEED AP, AIC

Vice President – PreConstruction & Estimating
AECOM Tishman
Arlington, Va.

DAVE MIELKE

President
MIELKE Holdings LLC
Tampa, Fla.

DEREK ROSS

Deputy Director, Construction Division
Smithsonian Facilities
Washington, D.C.

DAVE SPENCER

President
S. David & Co. LLC
Jacksonville, Fla.

RICHARD THOMAS, PLC

Director, State/Local Legislative Affairs
Design-Build Institute of America
Washington, D.C.

ANDRE W. THORNTON

Founder & CEO
Whitman Consulting
Germantown, Md.

ANDREW WRIGHT

Deputy Editor
Engineering News-Record
New York

Eagle Winners

Specialty Contractors

ELECTRICAL: COMMERCIAL
LESS THAN \$2 MILLION

BERGELECTRIC CORP. **C**

WeWork B Street **N**
San Diego **L**
WeWork **CO**
MK THINK **A**
ARUP **E**



Bergelectric had only 14 weeks to complete six floors on the WeWork B Street tenant improvement project. Each floor was approximately 3,200 square feet within a downtown San Diego high-rise building.

ELECTRICAL: COMMERCIAL
\$2 TO \$10 MILLION

CAROLINAPOWER **C**

Clemson University Allen N. Reeves Football Complex **N**
Clemson, S.C. **L**
Clemson University **CO**
GMC & HOK **A**
RMF Engineering Inc. **E**
DPR / Sherman Construction **GC**



CarolinaPower delivered the “Taj Mahal” of college football facilities early despite 100-plus design/scope changes and an accelerated schedule to accommodate National Signing Day.



ELECTRICAL: INDUSTRIAL
LESS THAN \$2 MILLION

TRIAD ELECTRIC & CONTROLS **C**

Valero FCC Desalter Project **N**
Norco, La. **L**
Valero Norco Refinery **CO**
Richard Industrial Group **E**



Despite uncommon dilemmas, a complex scope and many potential hazards, Triad consistently met target dates throughout the duration of this \$1.2 million desalter project at the Valero St. Charles Refinery in Norco, La.



Eagle Winners

Specialty Contractors



ELECTRICAL: INDUSTRIAL **\$2 TO \$10 MILLION**

C **ISC CONSTRUCTORS LLC**

N Phillips 66 - Lake Charles Manufacturing Complex
Coke Drum Replacement Project

L Lake Charles, La.

CO Phillips 66



It took ISC more than 61,000 manhours to complete this unprecedented four-drum coker replacement project in Lake Charles, La., without a recordable incident and on schedule for Phillips 66.



ELECTRICAL - OVER \$10 MILLION

C **ISC CONSTRUCTORS LLC**

N Exxon Mobil-Mitsubishi Heavy Industries America Inc.
North American Growth (NAG) Polyethylene Project

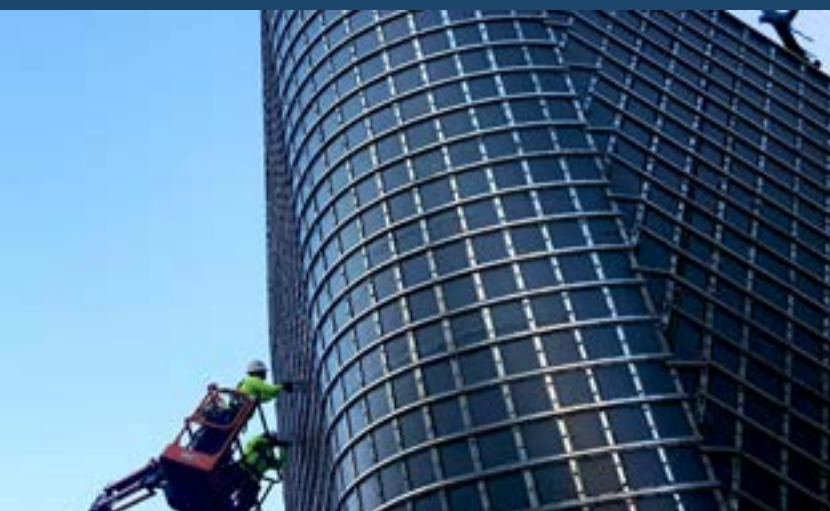
L Mont Belvieu, Texas

CO ExxonMobil Co.

E Mitsubishi Heavy Industries America Inc.



ISC contributed more than 1.1 million manhours over 45 months to successfully engineer, procure and construct this grassroots polyethylene facility on schedule and with zero OSHA recordable incidents.



EXTERIORS: EXTERIOR FINISHES

C **KENPAT**

N Patricia and Phillip Frost Museum of Science

L Miami

CO Miami Science Center

A Grimshaw Architects; Rodriguz and Quiroga Architects

E DDA Engineers, PA

GC SKANSKA USA Building

KENPAT's work on this science museum elevated industry standards through the extensive use of 3-D parametric modeling, the iterative translation of the precise location of x-q-z coordinates for each construction layer, and the installation and grouting of more than 400,000 circular tiles.

Eagle Winners

Specialty Contractors

**EXTERIORS: MASONRY,
PRECAST OR STONE**

TELLIGENT MASONRY LLC **C**

Parc Meridian at Eisenhower Station
Alexandria, Va. **N**
Paradigm Development Co. **L**
Architects Collaborative Inc. **CO**
Cagley & Associates **A**
E



Brickwork starts and stops at various heights throughout this 25-story luxury apartment building—causing difficult access across four scaffold systems for Telligent Masonry, which completed the bulk of the work in five months.

**INTERIORS: ACOUSTICAL,
DRYWALL, MILLWORK OR PLASTER**

SEARS CONTRACT INC. **C**

The Holy Name of Jesus Cathedral **N**
Raleigh, N.C. **L**
Catholic Diocese of Raleigh **CO**
O'Brien & Keane **A**
WFC LLC **E**
Clancy & Theys Construction Co. **GC**



The Holy Name of Jesus Cathedral features an ancient Romanesque design built by Sears Contract with modern day construction materials. It's a work of art that boasts towering barrel vaulted ceilings reaching heights of 78 feet leading to a dome reaching 140 feet high.

**MECHANICAL: COMMERCIAL
LESS THAN \$2 MILLION**

**THE CINCINNATI AIR
CONDITIONING CO.** **C**

Dixie Terminal South - Air Handler Replacement Project **N**
Cincinnati **L**
American Financial Group **CO**



A year of planning and collaboration with all project participants allowed The Cincinnati Air Conditioning Co. to replace three 100-ton central station air handlers in just five 24-hour days, as well as rig large equipment through small openings in this historical transit terminal turned office building.

Eagle Winners

Specialty Contractors



MTech's in-house engineers and skilled craft professionals contributed to this 24-story LEED Gold office building in downtown Denver, working as a team to counteract 150 days of delays from other trades and weather.

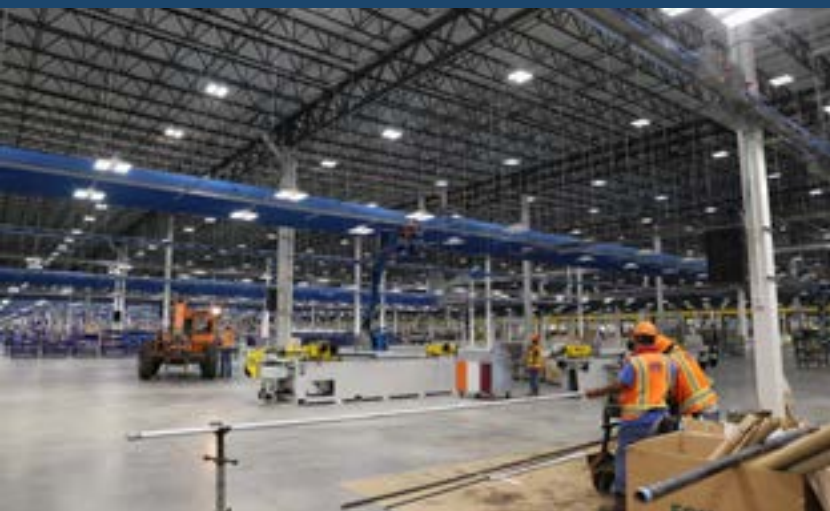
MECHANICAL: COMMERCIAL \$2 TO 10 MILLION

C MTECH MECHANICAL

- N** 1401 Lawrence
- L** Denver
- CO** First Gulf
- A** Beck Architecture
- E** MTech Mechanical
- GC** The Beck Group



**DESIGN-BUILD
AWARD WINNER**



TDIndustries successfully managed the HVAC systems for the Daikin Texas Technology Park project, where the vision of world-class production was made possible by intense collaboration, detailed and rigorous planning, and the desire to deliver a high-quality product.

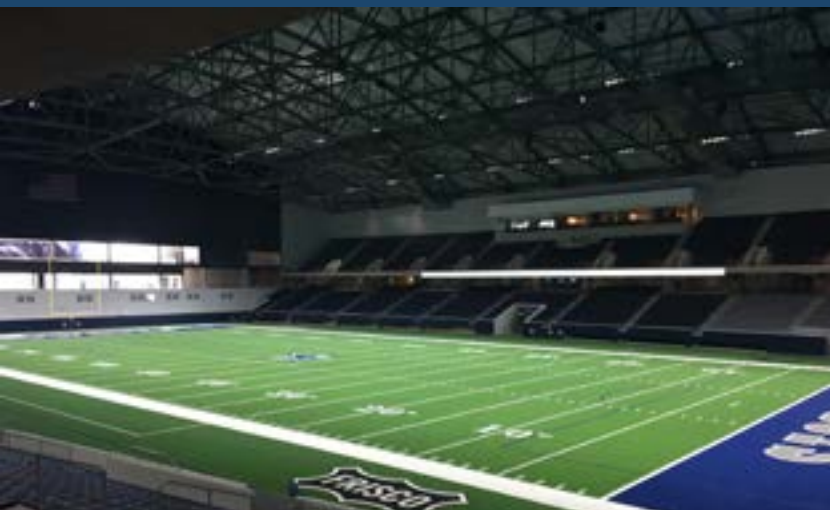
MECHANICAL - OVER \$10 MILLION

C TDINDUSTRIES

- N** Daikin Texas Technology Park
- L** Waller, Texas
- CO** Daikin Goodman
- A** Powers Brown Architecture
- E** DBR Engineering Consultants
- GC** Harvey Builders



**PRODUCTIVITY AWARD
WINNER**



While installing nearly 800,000 square feet of waterproofing products, Chamberlin overcame system tie-in issues, design challenges and time constraints through teamwork, innovation and proactive planning to safely deliver this multi-use event center and the Dallas Cowboys headquarters.

OTHER SPECIALTY CONSTRUCTION COMMERCIAL - \$2 TO \$10 MILLION

C CHAMBERLIN ROOFING & WATERPROOFING

- N** Frisco Multi-Use Special Event Center and Dallas Cowboys World Headquarters
- L** Frisco, Texas
- CO** Blue Star Development Co.
- A** Gensler
- GC** Manhattan Construction



Eagle Winners

Specialty Contractors

OTHER SPECIALTY CONSTRUCTION COMMERCIAL - MORE THAN \$10 MILLION

BARRIERE CONSTRUCTION CO. LLC

LA-20 Widening Project

Thibodaux, La.

Louisiana Department of Transportation and Development

Duplantis Design Group

C
N
L
CO
E



Barriere Construction received client commendation for excellent relationship management with the City of Thibodaux and stakeholders along the 2.6-mile route of this roadway widening project, which included congestion relief and enhanced access to local businesses in a rapidly developing area.

OTHER SPECIALTY CONSTRUCTION INDUSTRIAL - LESS THAN \$2 MILLION

EXCEL CONTRACTORS INC.

Poly 1 Control Room Upgrade

Sulphur, La.

Westlake Chemical

ABSG Consulting Inc.

C
N
L
CO
E



The Westlake Chemical – Poly 1 Control Room Upgrade presented many challenges; however, the project was delivered safely, on time, and within budget through the proactive efforts of EXCEL and the collective project team.



OTHER SPECIALTY CONSTRUCTION INDUSTRIAL - \$2 TO \$10 MILLION

KWEST GROUP

CSX - Nortonville to Romney Siding

Nortonville, Ky.

CSX Transportation Inc.

Crouch Engineering

C
N
L
CO
E



Kwest Group executed the extension of an active rail siding in Hopkins County, Ky., performing civil and environmental work in strict conformance with Kentucky Department for Environmental Protection and CSX Class 1 railroad requirements.

Eagle Winners

Specialty Contractors

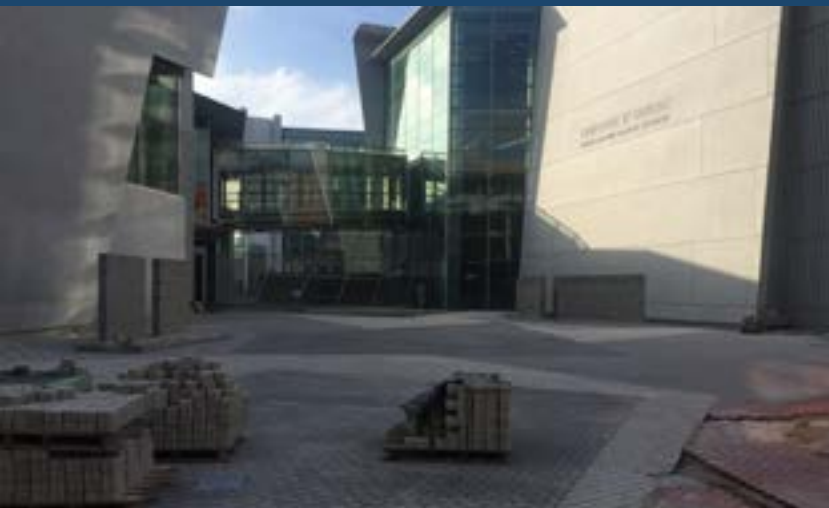


MMR executed the pre-commissioning, commissioning and startup for all disciplines of construction for this nitrogen fertilizer plant. The four-year project's total investment exceeded by \$3.7 billion and had more than 18 million safe manhours worked.

OTHER SPECIALTY CONSTRUCTION INDUSTRIAL - MORE THAN \$10 MILLION

C MMR CONSTRUCTORS INC.

- N** Nitrogen Fertilizer Project
- L** Wever, Iowa
- CO** IFCO (Iowa Fertilizer Co.)
- E** KBR, UHDE, Techmont



Durr created a dramatic 28,000-square-foot entryway to the grounds of the National World War II Museum under a project scope that included demolition, underground utilities, earthwork, structural concrete, structural foundations and recessed concrete pavement.

SITework/LANDSCAPE/HARDSCAPE

C DURR HEAVY CONSTRUCTION LLC

- N** Founders Plaza at the National World War II Museum
- L** New Orleans
- CO** National World War II Museum
- A** Voorsanger Mathes LLC
- E** Morphy Makofsky Inc.



Eagle Winners

 General Contractors/Construction Management

Inspired by traditional Louisiana architecture, Cajun Industries orchestrated an intricate renovation of a historic bank into an iconic fine-dining restaurant. With a keen eye for quality, Cajun completed the project under budget while logging approximately 40,000 safe manhours.

COMMERCIAL - LESS THAN \$5 MILLION

C CAJUN INDUSTRIES LLC

- N** Stab's Steak and Seafood Restaurant
- L** Baton Rouge, La.
- CO** Stab's Prime LLC
- A** Cockfield Jackson Architects, APAC
- E** McKee & Deville Consulting Engineers Inc.



Eagle Winners

General Contractors/
Construction Management

COMMERCIAL - \$5 TO \$10 MILLION

SOUTHCON BUILDING GROUP LLC

Southern First Bank Regional Headquarters/80 Calhoun
Charleston, S.C.
Southern First Bank
Stubbs Muldrow Herin Architects (SMHa)



Constructed on an extremely tight site in the heart of Charleston's historic district, SouthCon Building Group and its project partners overcame numerous challenges—both anticipated and unforeseen—to deliver a world-class office headquarters that exceeded the owner's expectations.

COMMERCIAL - \$10 TO \$35 MILLION

E.E. REED CONSTRUCTION LP

Nalco Champion Office Building
Sugar Land, Texas
Nalco Champion
Powers Brown Architecture
ASA Dally



Site logistics were key to E.E. Reed's successful completion of this four-story, tilt-wall office building addition to Nalco's headquarters, located on a functioning chemical facility near a busy railroad.

COMMERCIAL - \$35 TO \$100 MILLION

RODGERS BUILDERS INC.

SpringHill Suites by Marriott Charlotte Uptown
Charlotte, N.C.
SREE Hotels
CR Architecture & Design
KLH Engineers Inc. (MEP)/Thorson Baker Associates (Structural)



Built on less than one-third of an acre, bound by light rail and trolley tracks and abutting an existing parking deck, the footprint of this 16-floor hotel maximized the tight urban site and demanded a highly coordinated construction effort by Rodgers Builders.

Eagle Winners

General Contractors/
Construction Management



Following years of dedication prior to breaking ground, Synergy Construction helped bring to fruition 20 sustainably built studio apartments that provide a safe residence for formerly homeless veterans, as well as a vaulted community building and onsite work space.

COMMUNITY/PUBLIC SERVICE

- C** **SYNERGY CONSTRUCTION**
- N** Sebastian Place Veterans Housing
- L** Lynnwood, Wa.
- CO** Catholic Community Services of Western Washington
- A** Tonkin Architecture
- E** Nouwens Structural



DCM Architecture & Engineering—a small, minority-owned firm—completed this visually stunning, energy-efficient design/build project on time despite working in a secure, occupied federal office building in downtown Newark, N.J.

FEDERAL GOVERNMENT/MILITARY LESS THAN \$15 MILLION

- C** **DCM ARCHITECTURE & ENGINEERING LLC**
- N** Rodino Vestibule & Building Renovation
- L** Newark, N.J.
- CO** US General Services Administration
- A** DCM Architecture & Engineering LLC
- E** DCM Architecture & Engineering LLC

**DESIGN-BUILD
AWARD WINNER**



Brasfield & Gorrie's role on this unique project involved constructing two NASA launch system stands designed to test the largest ever liquid oxygen/liquid nitrogen fuel tanks that will help send astronauts on deep space missions and eventually to Mars.

FEDERAL GOVERNMENT/MILITARY \$15 TO \$100 MILLION

- C** **BRASFIELD & GORRIE LLC**
- N** NASA Space Launch System Test Stands
- L** Marshall Space Flight Center, Ala.
- CO** U.S. Army Corps of Engineers
- A** Goodwyn Mills and Cawood
- E** Merrick & Co.



Eagle Winners

General Contractors/
Construction Management

HEALTH CARE - LESS THAN \$10 MILLION

ROBINS & MORTON

Duke University Medical Center Cardiac Intensive
Care Unit Renovation and Infrastructure Upgrades
Durham, N.C. **C**
N
L
Duke University Medical Center **CO**
Perkins+Will **A**
RMF Engineering **E**



Continuing its multi-year transformation, Duke University Medical Center contracted Robins & Morton for a complex cardiac intensive care unit renovation that required 18 shutdowns with no unplanned interruption to operations, all while simultaneously performing demolition and new construction.

HEALTH CARE - \$10 TO \$25 MILLION

ADOLFSON & PETERSON CONSTRUCTION

USPI Texas Surgery Center Ambulatory Surgery
Center and Medical Office Building **C**
N
Midland, Texas **L**
United Surgical Partners International (USPI) **CO**
E4H - Environments for Health Architecture **A**
SW Associates Consulting Engineers **E**



Working with United Surgical Partners International, Adolfsen & Peterson constructed a new 52,000-square-foot fully finished medical office building four weeks ahead of schedule and completed a 4,160-square-foot ambulatory surgical center expansion to the adjacent Texas Surgery Center three weeks early.

HEALTH CARE - \$25 TO \$100 MILLION

ROBINS & MORTON

Choctaw Nation Regional Health Clinic **C**
Durant, Okla. **N**
L
Choctaw Nation Health Services Authority **CO**
Childers Architect **A**
HP Engineering **E**



PRODUCTIVITY AWARD
WINNER



Robins & Morton sidestepped a deluge of rainfall, dozens of change orders, labor shortages and materials delays to complete the 152,118-square-foot Choctaw Nation of Oklahoma Regional Medical Campus, which includes a main clinic, facilities building and health service administration building.

Eagle Winners

General Contractors/
Construction Management



Brasfield & Gorrie renovated the historic five-and-dime S.H. Kress Co. building and built a two-story multifamily addition. The mixed-use project— part of a downtown revitalization effort in Montgomery, Ala.—included 75,000 square feet of renovations and 35,000 square feet of new construction.

HISTORICAL - LESS THAN \$25 MILLION

- C** **BRASFIELD & GORRIE LLC**
- N** 39 Dexter Mixed-Use
- L** Montgomery, Ala.
- CO** ELSAJA DEXTER 39 LLC
- A** Seay Seay & Litchfield Architecture



Brasfield & Gorrie overcame complex challenges while reviving the 11-story, water-damaged Pizitz Building, which had been vacant for 27 years, by performing 268,315 square feet of renovations while preserving the 94-year-old structure's historical elements.

HISTORICAL - \$25 TO \$100 MILLION

- C** **BRASFIELD & GORRIE LLC**
- N** The Pizitz Building Restoration & Renovation
- L** Birmingham, Ala.
- CO** Bayer Properties
- A** KPS Group, Inc. and Wisznia Architecture & Development
- E** Lane Bishop York Delahay Inc. (LBYD)



GROUP Contractors completed the grassroots construction of a 15,000-square-foot, pre-engineered metal motor control center building ahead of its liquidated damages deadline despite materials delays, site constraints and extraordinary concrete finishing requirements. Through it all, the deadline for the building remained fixed.

INDUSTRIAL - LESS THAN \$5 MILLION

- C** **GROUP CONTRACTORS LLC**
- N** Poly 6 MCC Building
- L** Freeport, Texas
- CO** The Dow Co.
- A** The Dow Co.
- E** The Dow Co.



Eagle Winners


General Contractors/
Construction Management

INDUSTRIAL - \$5 TO \$15 MILLION

CAJUN INDUSTRIES LLC

Dow Gulfstream Building Program
Plaquemine, La.
The Dow Chemical Co.
The Dow Chemical Co.
The Dow Chemical Co.

C
N
L
CO
A
E




Utilizing innovative blast-resistant techniques, Cajun and its ABC subcontractor partners logged approximately 130,000 safe manhours building three mission-critical structures for plant controls, main power and chemical warehousing at the new LAO Poly-D Process Unit.

INDUSTRIAL - \$15 TO \$25 MILLION

BRASFIELD & GORRIE LLC

Southern Blanking Steel Processing Facility Phases I and II
Columbia, Tenn.
Samuel, Son & Co. Ltd.
Gulf States Engineering

C
N
L
CO
E




After successfully completing an initial 108,500-square-foot steel processing plant, Brasfield & Gorrie was able to negotiate directly with the owner to perform a phase II, 100,000-square-foot expansion to the existing facility.

INDUSTRIAL - \$25 TO \$100 MILLION

HITT CONTRACTING INC.

Building H
Ashburn, Va.
Confidential
Herring & Trowbridge Architects
DLB Associates

C
N
L
CO
A
E



This two-story tilt-up concrete and structural steel greenfield data center was constructed on a secure, occupied campus with limited staging space. Phased preconstruction efforts allowed for construction to begin prior to drawing set completion, and the building was turned over one month early.

Eagle Winners

General Contractors/
Construction Management



Black Construction Corporation achieved 300,000 manhours without a lost-time incident while rehabilitating a runway at Chuuk International Airport in Micronesia. Fifty thousand tons of aggregates were imported via a break bulk vessel and multiple barge trips were necessary to mobilize heavy equipment and asphalt/concrete.

INFRASTRUCTURE: HEAVY

C **BLACK CONSTRUCTION CORP.**

N Chuuk International Airport - Rehabilitate Runway
04/22 - Phase II

L Weno Island, Chuuk State,
Federated States of Micronesia

CO FSM National Government Dept. of TC&I

E SSFM International Inc.



Through close collaboration with the Second Street Church of Christ leadership, Brindley Construction completed design-build renovations to the 166-year-old building on schedule and on budget—transforming it into a welcoming structure for both members and visitors.

INSTITUTIONAL - LESS THAN \$5 MILLION

C **BRINDLEY CONSTRUCTION LLC**

N Second Street Church of Christ

L Pulaski, Tenn.

CO Second Street Church of Christ

A W. Michael Stewart, Architecture



Adolfson & Peterson Construction overcame the challenges of building in mountain terrain in a congested tourist location, delivering a new performing arts center that met diverse owners' goals and is now a model for architectural standards for the town of Silverthorne, Co.

INSTITUTIONAL - \$5 TO \$10 MILLION

C **ADOLFSON & PETERSON CONSTRUCTION**

N Silverthorne Performing Arts Center

L Silverthorne, Colo.

CO Town of Silverthorne

A OZ Architecture

E JVA Inc.



Eagle Winners

General Contractors/
Construction Management

INSTITUTIONAL - \$10 TO \$25 MILLION

PINKARD CONSTRUCTION CO. **C**

Moorhead Recreation Center **N**
Aurora, Colo. **L**
City of Aurora **CO**
Barker Rinker Seacat Architecture **A**



Pinkard built this custom-designed rec center with complex features and considerable constructability challenges, adhering to a tight budget and strict schedule while meeting the extremely high demand for quality.

INSTITUTIONAL - \$25 TO \$100 MILLION

ROY ANDERSON CORP. **C**

Gulfport High School Additions & Renovations **N**
Gulfport, Miss. **L**
Gulfport School District **CO**
Eley Guild Hardy Architects **A**



Gulfport High School is now like a college campus, with buildings interconnected by breezeways and walkways and with green space in the center. Roy Anderson Corp.'s construction management contract included three phases of demolition, 63,000-square feet of renovations and 192,000-square feet of new construction.

MEGA-PROJECTS - OVER \$100 MILLION

SPAWGLASS **C**

Texas A&M University Corps Dorm Renovation **N**
College Station, Texas **L**
Texas A&M University **CO**
Kirksey Architecture **A**
DBR Engineering Consultants **E**



SpawGlass renovated nine dormitory buildings that house the Texas A&M Corps of Cadets, constructed 13 end caps to these dorms and built two new Leadership Learning Centers. The entire quad also was renovated with underground utilities, hardscape and landscaping.

**PRODUCTIVITY AWARD
WINNER**



**DESIGN-BUILD
AWARD WINNER**

Eagle Winners

General Contractors/
Construction Management



Milender White built a sophisticated ecological data-gathering facility more than 170 miles above the Arctic Circle on Alaska's North Slope. The remote location, harsh climate and physical environment required next-level planning and preparedness.

OTHER CONSTRUCTION LESS THAN \$10 MILLION

- C** **MILENDER WHITE**
- N** Toolik Ecological Observatory
- L** North Slope Borough, Alaska
- CO** National Ecological Observatory Network (NEON)
- A** Leo A Daly
- E** Paul J. Ford & Co.



Wanzek Construction was contracted to build a 200-megawatt wind farm featuring 100 turbines across 25,000 acres as part of Xcel Energy's plan to provide approximately 100,000 Upper Midwest customers with clean, reliable and cost-effective renewable energy.

OTHER CONSTRUCTION \$10 TO \$100 MILLION

- C** **WANZEK CONSTRUCTION INC.**
- N** Courtenay Wind Farm – Xcel Energy
- L** Near Jamestown, N.D.
- CO** Xcel Energy
- E** Westwood PS



PRE-ENGINEERED BUILDING

- C** **CADDELL CONSTRUCTION CO.**
- N** Design-Build Vocational Training Facilities
- L** Wheeler County Correctional Facility / Alamo, Ga.
- CO** CoreCivic / Wheeler County Correctional Facility
- A** GRW Architects & Engineers
- E** GRW Architects & Engineers



With a perfect safety record, on-time completion, superior quality construction and zero security incidents, Caddell exceeded all owner requirements and expectations while delivering cutting-edge vocational training facilities to help advance inmate rehabilitation services in Georgia.

Eagle Winners

General Contractors/
Construction Management

PUBLIC WORKS/ENVIRONMENTAL

METHUEN CONSTRUCTION CO. INC. **C**

Construction of the Long Pond Water Treatment Plant **N**
Falmouth, Mass. **L**
Town of Falmouth, Mass. **CO**
Tata & Howard Inc. **A**
CH2M Hill **E**

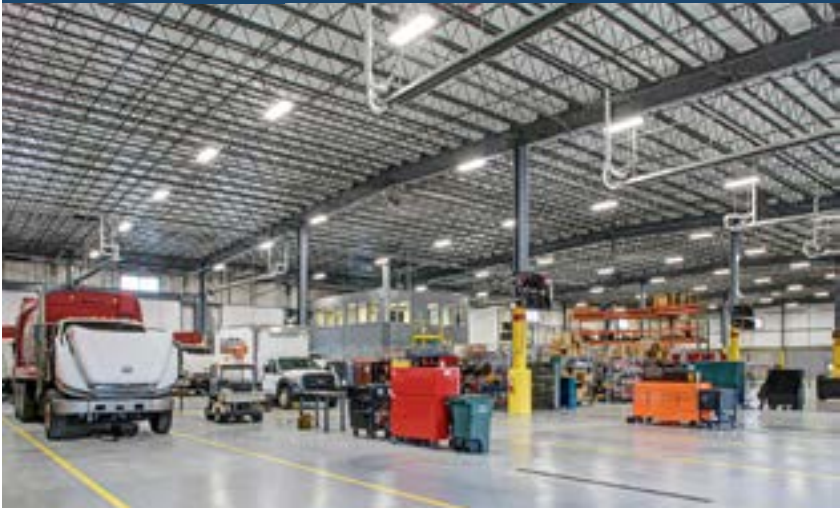


Methuen Construction used dissolved air flotation clarification, horizontal directional drilling and critical path method scheduling to finish this water treatment plant on time while meeting stringent state and federal environmental regulations.

RENOVATION - LESS THAN \$5 MILLION

KEYSTRUCT CONSTRUCTION INC. **C**

Penn Waste Truck Maintenance Facility **N**
York, Pa. **L**
Penn Waste Inc. **CO**
SAArchitects **A**

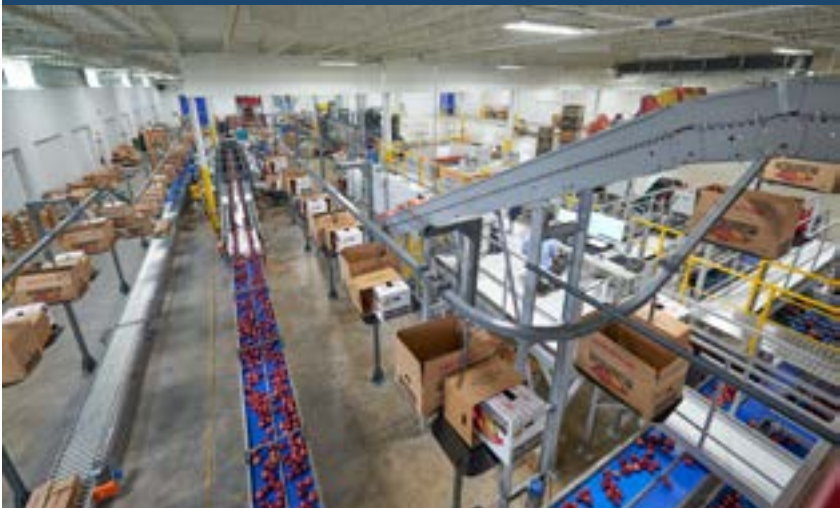


Keystruct repurposed a trash/recycling building into a modern truck maintenance shop - relying on innovative scheduling solutions to complete critical elements concurrently with the lengthy flooring process to meet the project's strict completion date.

RENOVATION - \$5 TO \$10 MILLION

WARFEL CONSTRUCTION CO. **C**

Hess Bros. Fruit Company Packaging and Distribution Center **N**
Lancaster, Pa. **L**
Hess Bros. Fruit Co. **CO**
Althouse Martin and Associates **A**
Providence Engineering Corp. **E**



Warfel helped find a suitable location, secured design services and transformed this former manufacturing space into a fully functional distribution center—enabling Hess Bros. to more efficiently process and distribute more than 1.5 million bushels of apples per year.

Eagle Winners

General Contractors/
Construction Management



RENOVATION - \$10 TO \$100 MILLION

C KINSLEY CONSTRUCTION INC.

- N** Roberts Hall Renovation
- L** Lewisburg, Pa.
- CO** Bucknell University
- A** Nelson Architecture
- E** Mid-Penn Engineering

Despite a compressed eight-month schedule and unforeseen scope changes, Kinsley Construction transformed Bucknell University's oldest residence hall into a 61,000-square-foot LEED-certified facility on time and with zero impact to quality and safety.



RESIDENTIAL: MULTI-FAMILY AND CONDOMINIUM PROJECTS UP TO \$100 MILLION

C BRASFIELD & GORRIE LLC

- N** Carolina Bay at Autumn Hall - CCRC Main Campus
- L** Wilmington, N.C.
- CO** Liberty Healthcare Management
- A** LS3P Associates Ltd.
- GC** Thomas Construction (Partner)

Under the constraints of a tight schedule, an active hurricane season and six different structure types, Brasfield & Gorrie and its project partners built a high-end continuing care retirement community with resort-like amenities to meet the need for quality housing close to the coast.



RESIDENTIAL: SINGLE-FAMILY PROJECTS UP TO \$100 MILLION

C ADOLFSON & PETERSON CONSTRUCTION

- N** Preston Garage
- L** Confidential
- CO** Confidential
- A** GFF Architects
- E** Hunt & Joiner Inc.

Adolfson & Peterson Construction built a 73-vehicle underground parking garage with a full-length basketball court. The roof consists of cast-in-place post-tension concrete beams—with a span of 105 feet at the widest point—that are clad with oak veneer panels and backlit with LED strip lighting.

Pyramid Winners

Specialty Contractors

ELECTRICAL: COMMERCIAL - LESS THAN \$2 MILLION

C BERGSTROM ELECTRIC INC.

- N** UND Aerospace & UAS Research - Robin Hall
- L** Grand Forks, N.D.
- CO** UND Aerospace Foundation
- A** ICON Architectural Group
- E** JB Electrical Design PC
- GC** Olaf Anderson



ELECTRICAL: COMMERCIAL - LESS THAN \$2 MILLION

C HELIX ELECTRIC

- N** Ascaya Clubhouse
- L** Henderson, Nev.
- CO** Ascaya Inc.
- A** Swaback Partners PLLC
- E** MSA Engineering Consultants



ELECTRICAL: COMMERCIAL - \$2 TO \$10 MILLION

C GAYLOR ELECTRIC INC.

- N** University of Louisville - University Pointe
- L** Louisville, Ky.
- CO** American Campus Communities (ACC)
- A** Humphrey's & Partners Architects LP
- E** PE Services



ELECTRICAL: INDUSTRIAL - \$2 TO \$10 MILLION

C MMR CONSTRUCTORS INC.

- N** Bunge Dock Expansion
- L** Destrehan, La.
- CO** Bunge North America
- E** River Consulting LLC
- GC** BOH Brothers



ELECTRICAL - OVER \$10 MILLION

C INTERSTATES

- N** Ag Processing Inc Vegetable Oil Refinery
- L** Sergeant Bluff, Iowa
- CO** Ag Processing Inc.
- E** Interstates Engineering Inc.
- GC** M & W Contractors



ELECTRICAL - OVER \$10 MILLION

C ISC CONSTRUCTORS LLC

- N** Dow Chemical Company - LHC3 Control Room Upgrade
- L** Plaquemine, La.
- CO** Dow Chemical Co.
- E** Dow Chemical Co.



EXTERIORS: EXTERIOR FINISHES

C HALEY-GREER INC.

- N** Wildwood Corporate Center II
- L** Houston
- CO** GeoSouthern Energy Corp.
- A** Kirksey Architecture
- E** Walter P. Moore
- GC** E.E. Reed Construction

EXTERIORS: MASONRY, PRECAST OR STONE

C WOODLAND TILT-UP

- N** Florida International University-Biscayne Bay Campus Student Living
- L** North Miami, Fla.
- CO** NCCD - Biscayne Bay Properties LLC
- A** PGAL
- E** Johnson Structural Group



INTERIORS: ACOUSTICAL, DRYWALL, MILLWORK OR PLASTER

C SPACECON SPECIALTY CONTRACTORS LLC

- N** UCCS Ent Center for the Arts
- L** Colorado Springs, Colo.
- CO** Regents of the University of Colorado
- A** Semple Brown Design
- E** Martin / Martin
- GC** J.E. Dunn Construction Group



MECHANICAL: COMMERCIAL - \$2 TO 10 MILLION

C HOMETOWN PLUMBING & HEATING

- N** Iowa City CSD Liberty High School Phase 1
- L** North Liberty, Iowa
- CO** Iowa City Community School District
- A** SVPA Architects Inc.
- E** Design Engineers

MECHANICAL: INDUSTRIAL - LESS THAN \$10 MILLION

C SPC MECHANICAL

- N** Bridgestone Wilson NC Plant Expansion
- L** Wilson, N.C.
- CO** Bridgestone Americas

MECHANICAL - OVER \$10 MILLION

C HPS MECHANICAL INC.

- N** Mesa Nueva Graduate Housing
- L** La Jolla, Calif.
- CO** The Regents of the University of California, San Diego
- A** Mithun Inc.
- E** MA Engineering
- GC** Hensel Phelps



MECHANICAL - OVER \$10 MILLION

C RK MECHANICAL INC.

- N** Aggie Village at Colorado State University
- L** Fort Collins, Colo.
- CO** Colorado State University
- A** 4240 Architecture Inc.
- E** Cator Ruma & Associates Co.
- GC** PCL Construction Services Inc.

OTHER SPECIALTY CONSTRUCTION - COMMERCIAL LESS THAN \$2 MILLION

C THE WITMER GROUP

- N** Burnside Bridge, Antietam National Battlefield
- L** Sharpsburg, Md.
- CO** National Park Service

Pyramid Winners

General Contractors/
Construction Management



OTHER SPECIALTY CONSTRUCTION - COMMERCIAL \$2 TO \$10 MILLION

C RK STEEL

- N UCCS Village at Alpine Valley
- L Colorado Springs, Colo.
- CO University of Colorado Colorado Springs
- A Page Southerland Page Inc.
- E KL&A

OTHER SPECIALTY CONSTRUCTION - COMMERCIAL MORE THAN \$10 MILLION

C BAKER CONCRETE CONSTRUCTION INC.

- N Panorama Tower
- L Miami
- CO Florida East Coast Realty
- A Moshe Cosicher Architect
- E Desimone Consulting Engineers



OTHER SPECIALTY CONSTRUCTION - INDUSTRIAL LESS THAN \$2 MILLION

C ISC CONSTRUCTORS LLC

- N ExxonMobil Pipeline Company - Sorrento Flood Recovery Project
- L Sorrento, La.
- CO ExxonMobil Pipeline Co.

OTHER SPECIALTY CONSTRUCTION - INDUSTRIAL \$2 TO \$10 MILLION

C CONTRACTOR SERVICES AND FABRICATION

- N MS Industries Silica Flour Grinding Plant
- L Russellville, Ala.
- CO MS Industries
- E EDG Consulting
- GC Contractor Services and Fabrication



OTHER SPECIALTY CONSTRUCTION - INDUSTRIAL \$2 TO \$10 MILLION

C STANDARD CONSTRUCTORS INC.

- N DOW Gulfstream Poly-5 Railroad System Installation
- L Freeport, Texas
- CO DOW Gulfstream Texas Operations
- E CH2M HILL Engineers Inc.

OTHER SPECIALTY CONSTRUCTION - INDUSTRIAL MORE THAN \$10 MILLION

C BARRIERE CONSTRUCTION CO. LLC

- N Sasol Heavy Haul Road Project
- L Westlake, La.
- CO Sasol
- E Fenstermaker

COMMERCIAL - LESS THAN \$5 MILLION

C KEEN PROJECT SOLUTIONS LLC

- N Pioneer Reinbeck Conditioning Tower Remodel
- L Reinbeck, Iowa
- CO DuPont Pioneer
- E KJWW Engineering Consultants (IMEG)

COMMERCIAL - \$5 TO \$10 MILLION

C POOLE ANDERSON CONSTRUCTION

- N Weis Markets Store #225
- L Enola, Pa.
- CO Weis Markets
- A Weis Markets
- E First Capital Engineering



COMMERCIAL - \$5 TO \$10 MILLION

C ROCHE CONSTRUCTORS INC.

- N Albertsons Store No. 2804
- L Las Vegas
- CO Safeway Inc.
- A Esencia Architecture and Urban Design
- E Pioneer Design + Engineering PLLC



COMMERCIAL - \$10 TO \$35 MILLION

C SPAWGLASS

- N Pioneer Bank - 38th Street
- L Austin, Texas
- CO Pioneer Bank, SSB
- A Jackson McElhane Architects
- E Doucet & Associates Inc. (Civil)/Encotech Engineering Consultants Inc. (MEP)/Cardno Haynes Whaley Associates Inc. (Structural)



COMMERCIAL - \$35 TO \$100 MILLION

C BRASFIELD & GORRIE LLC

- N AvidXchange
- L Charlotte, N.C.
- CO Red Rock Developments
- A LS3P
- E Bloc Design PLLC



COMMERCIAL - \$35 TO \$100 MILLION

C HENSEL PHELPS

- N Union Tower West
- L Denver
- CO Portman Holdings
- A John Portman & Associates Inc.
- E Kimley-Horn



COMMUNITY/PUBLIC SERVICE

C WARFEL CONSTRUCTION CO.

- N Water Street Mission Makeover
- L Lancaster, Pa.
- CO Water Street Mission
- A RLPS Architects

Pyramid Winners

General Contractors/
Construction Management

FEDERAL GOVERNMENT/MILITARY - \$15 TO \$100 MILLION

C CMS CORP.

- N** Design-Build Recapitalize Deep Draft Berthing Wharf Charlie 2
Naval Station, Mayport, Fla.
CO Naval Facilities Engineering Command (NAVFAC) Southeast
A Arcadis-US Inc.
E Arcadis-US Inc.



HEALTH CARE - LESS THAN \$10 MILLION

C BENCHMARK CONSTRUCTION CO. INC.

- N** Cross Keys Village - Brookside Memory Support Residence
New Oxford, Pa.
CO Cross Keys Village - The Brethren Home Community
A SFCS Inc.
E SFCS Inc.



HEALTH CARE - LESS THAN \$10 MILLION

C SPAWGLASS

- N** Houston Methodist St. John Hospital Labor
and Delivery Unit Renovation
Nassau Bay, Texas
CO Houston Methodist St. John Hospital
A HDR Architecture
E Smith Seckman Reid Inc.

HEALTH CARE - \$10 TO \$25 MILLION

C DPR CONSTRUCTION

- N** Boca Raton Regional Hospital Gloria Drummond Physical
Rehabilitation Institute
Boca Raton, Fla.
CO Boca Raton Regional Hospital
A HKS
E BR+A



HEALTH CARE - \$25 TO \$100 MILLION

C SPAWGLASS

- N** The Village of River Oaks Senior Living Community
Houston
CO Bridgewood Property Co.
A House+Partners Architecture & Planning

HISTORICAL - LESS THAN \$25 MILLION

C T.W. FRIERSON CONTRACTOR INC.

- N** Omohundro Water Treatment Plant
Nashville, Tenn.
CO Blakley Construction Services LLC
A Centric Architecture
E EMC Structural Engineers



HISTORICAL - \$25 TO \$100 MILLION

C BANCROFT CONSTRUCTION CO.

- N** Longwood Gardens Main Fountain Garden Revitalization
Kennett Square, Pa.
CO Longwood Gardens
A Beyer Blinder Belle
E Fluidity Design Consultants and West 8



INDUSTRIAL - LESS THAN \$5 MILLION

C THE WEITZ CO.

- N** Animal Nutrition Blend & Processing Facility
Brownwood, Texas
CO Lortscher Animal Nutrition Inc.
A RSP Architects Ltd.
E Weitz Professional Services LLC



INDUSTRIAL - \$5 TO \$15 MILLION

C TODD & SARGENT INC.

- N** Chelsea Milling Batch & Mixing Tower
Chelsea, Mich.
CO Chelsea Milling Co.
A Todd & Sargent Inc.
E Todd & Sargent Inc.



INDUSTRIAL - \$15 TO \$25 MILLION

C KEYSTRUCT CONSTRUCTION INC.

- N** Susquehanna Logistics Center
Glen Rock, Pa.
CO Cabot Properties Inc./Ridgeline Property Group LLC
A Pieper O'Brien Herr Architects
E Haines Gipson & Associates



INDUSTRIAL - \$25 TO \$100 MILLION

C HENSEL PHELPS

- N** Commercial Crew Transportation Capability (ULA CCTCap)
Cape Canaveral, Fla.
CO United Launch Alliance (ULA)
A Nishkian Dean
E Lund/Fives, Nelson, RS&H

INSTITUTIONAL - LESS THAN \$5 MILLION

C POOLE ANDERSON CONSTRUCTION

- N** Winton Hill Athletic Complex
Huntingdon, Pa.
CO Juniata College
A Derck & Edson
E Zug & Associates Ltd.

INSTITUTIONAL - \$5 TO \$10 MILLION

C ROCKFORD CONSTRUCTION

- N** Grand Rapids Community College Phyllis Fratzke Early Childhood
Learning Laboratory
Grand Rapids, Mich.
CO Grand Rapids Community College
A Stantec Architecture Inc.
E Stantec Architecture Inc.



INSTITUTIONAL - \$10 TO \$25 MILLION

C SPAWGLASS

- N** Oak Hills Church Crownridge Campus New Worship
Center and Renovation
San Antonio
CO Oak Hills Church
A RVK Architects
E Pape-Dawson Engineers Inc.(Civil)/MEP Engineering Inc.
(MEP)/Lundy & Franke Engineering Inc. (Structural)

Pyramid Winners

General Contractors/
Construction Management



INSTITUTIONAL - \$25 TO \$100 MILLION

C **ROBINS & MORTON**

- N Wofford College Rosalind Sallenger Richardson Center for the Arts
- L Spartanburg, S.C.
- CO Wofford College
- A McMillan Pazdan Smith
- E RMF Engineering

INSTITUTIONAL - \$25 TO \$100 MILLION

C **RODGERS BUILDERS INC.**

- N Davidson College - E. Craig Wall Jr. Science Building
- L Davidson, N.C.
- CO Davidson College
- A Shepley Bulfinch
- E Vanderweil Engineers (MEP/FP)/Simpson Gumpertz & Heger Inc. (Structural)/CALYX Engineers + Consultants (Civil)



MEGA-PROJECTS - OVER \$100 MILLION

C **BRASFIELD & GORRIE LLC**

- N Bridgestone Tower
- L Nashville, Tenn.
- CO Highwoods Properties
- A Perkins+Will
- E Uzun+Case



MEGA-PROJECTS - OVER \$100 MILLION

C **TIC - THE INDUSTRIAL CO.**

- N Petra Nova Post-Combustion Carbon Capture Sequestration Project
- L Thompsons, Texas
- CO Petra Nova Parish Holdings LLC (NRG Energy Inc. and JX Nippon Oil & Gas Exploration Corp.)
- E Mitsubishi Heavy Industries America Inc. (Carbon Capture System)/Kiewit Engineering Group (Balance of Plant)



OTHER CONSTRUCTION - LESS THAN \$10 MILLION

C **C.S. BEATTY CONSTRUCTION INC.**

- N Birmingham Zoo Front Entrance and Event Lawn
- L Birmingham, Ala.
- CO Birmingham Zoo Inc.
- A Goodwyn Mills and Cawood Inc.
- E CCI Planning and Engineering



OTHER CONSTRUCTION - \$10 TO \$100 MILLION

C **HOAR CONSTRUCTION**

- N Anthony Field at Wildcat Stadium
- L Abilene, Texas
- CO Abilene Christian University
- A HKS Inc.
- E HKS Structural

PRE-ENGINEERED BUILDING

C **GORSKI ENGINEERING INC.**

- N Limerick Fire Company New Fire Station
- L Limerick, Pa.
- CO Limerick Fire Co.
- A KCBA Architects
- E Gorski Engineering Design-Build



PUBLIC WORKS/ENVIRONMENTAL

C **BLACK CONSTRUCTION CORP.**

- N Regulatory Closure of the Puerto Rico Dump
- L Puerto Rico, Saipan, CNMI
- CO Office of the Governor - Capital Improvement Projects Commonwealth of the Northern Mariana Islands
- E GHD Inc./Geo-Logic Associates



PUBLIC WORKS/ENVIRONMENTAL

C **BRASFIELD & GORRIE LLC**

- N Owens, Statum, and Wall Southeast Water Treatment Plant
- L Huntsville, Ala.
- CO Huntsville Utilities
- E Tetra Tech

RENOVATION - LESS THAN \$5 MILLION

C **CENTRAL BUILDERS INC.**

- N HEB Spring #610
- L Spring, Texas
- CO H.E. Butts Grocery
- A WKMC Architects

RENOVATION - \$10 TO \$100 MILLION

C **LECHASE CONSTRUCTION SERVICES LLC**

- N JB Duke Hotel & Thomas Executive Conference Center
- L Durham, N.C.
- CO Duke University
- A Rabun Rasche Rector Reece



RESIDENTIAL: MULTI-FAMILY AND CONDOMINIUM PROJECTS UP TO \$100 MILLION

C **THE FAVERGRAY CO.**

- N 18Nineteen Student Housing
- L Lubbock, Texas
- CO Haven Campus Communities
- A Gary B. Coursey & Associates
- E Harrell Kane Structural Engineers

A Foundation of Safety

2017 NATIONAL SAFETY EXCELLENCE AWARD RECIPIENTS

From exceptional safety records to rigorous training and education programs, winners of the National Safety Excellence Awards excelled in all areas of ABC's Safety Training Evaluation Process (STEP), demonstrating an extraordinary commitment to safety.

Presenting Sponsor



We can show you more.®

Panel of Judges

DARYL A. GUERCIO

Corporate HSE Compliance/Training Director
CB&I
The Woodlands, Texas

MELANIE LAIRD

Executive Vice President
FC Construction Services
Dallas

JOSEPH N. MCANULTY

Safety Director
Kencor Inc. Elevator Systems
Wilmington, Del.

JEREMY MILLER, CSP

EHS Director
Performance Contractors Inc.
Baton Rouge, La.

RALPH RILEY

Safety/Workforce Programs Manager
S & B Engineers and Constructors Ltd.
Greater Houston, Texas

SHELLEY SUTTON, CSHO

Director of Shared Services
hth cos. inc.
Union, Mo.

JAMES K. THOMPSON, CSSM

Corporate EH&S Director
Kwest Group LLC
Perrysburg, Ohio

Pinnacle Winners

NAICS 236

GENERAL CONTRACTOR

- | | |
|---|---|
| JM COULL 
Maynard, Mass. | SDV CONSTRUCTION INC. 
Albuquerque, N.M. |
| MANHATTAN CONSTRUCTION CO. 
Tulsa, Okla. | THE MUNDY COS.
Houston |
| RLS CONSTRUCTION GROUP
Mechanicsburg, Pa. | |

NAICS 237

HEAVY AND CIVIL ENGINEERING CONTRACTOR

- | | |
|--|--|
| CIANBRO
Pittsfield, Maine | PRIMORIS I&M
Baton Rouge, La. |
| NOVA GROUP INC. 
Napa, Calif. | S & B ENGINEERS AND CONSTRUCTORS 
Houston |
| PCL INDUSTRIAL CONSTRUCTION CO.
Houston | SAULSBURY INDUSTRIES
Odessa, Texas |

NAICS 238

SPECIALTY CONTRACTOR

- | | |
|---|---|
| CHAMBERLIN ROOFING & WATERPROOFING 
Dallas | HTH COS. INC. 
Union, Mo. |
| COLOR WORKS PAINTING INC.
New Castle, Del. | KWEST GROUP
Perrysburg, Ohio |

Excellence Winners

NAICS 236

GENERAL CONTRACTOR

- | | |
|--|---|
| BLACK CONSTRUCTION CORP. 
Harmon Industrial Park, Guam | RCL CONSTRUCTION
Sanford, Mich. |
| ELZINGA & VOLKERS CONSTRUCTION INC. 
Holland, Mich. | ROGERS O'BRIEN CONSTRUCTION CO.
Dallas |
| FAGEN INC.
Granite Falls, Minn. | ROSS GROUP
Tulsa, Okla. |
| GILBANE BUILDING CO.
Providence, R.I. | SATTERFIELD & PONTIKES CONSTRUCTION INC.
Houston |
| KIRLIN BUILDERS LLC
Rockville, MD. | TIC - THE INDUSTRIAL CO. 
The Woodlands, Texas |
| | TRIO ELECTRIC
Houston |

NAICS 237

HEAVY AND CIVIL ENGINEERING CONTRACTOR

C.O. FALTER
Syracuse, N.Y.

CAJUN INDUSTRIES LLC
Baton Rouge, La.

REPCON INC.
Corpus Christi, Texas

WM SCHULTZ CONSTRUCTION
Ballston Spa, N.Y.

WT BYLER CO.
Houston

NAICS 238

SPECIALTY CONTRACTOR

COUTTS BROTHERS INC.
Randolph, Maine

GE INSULATION
Sanford, Mich.

GFP CEMENT CONTRACTORS
Newport, Del.

IAN CORPORATION
Barrigada, Guam

M. DAVIS AND SONS
Wilmington, Del.

MAREK
Coppell, Texas

MKD ELECTRIC
Elgin, Ill.

PETERSON BECKNER INDUSTRIES
Houston

TD INDUSTRIES
Dallas

TST ROOFING
Norfolk, Va.

W.S. NIELSEN CO. INC.
Alpharetta, Ga.

WALKER ENGINEERING
Irving, Texas

Merit Winners

NAICS 236

GENERAL CONTRACTOR

BENCHMARK CONSTRUCTION CO. INC.
Brownstown, Pa.

FARGO PACIFIC
Tamuning, Guam

HASKELL
Jacksonville, Fla.

ROY ANDERSON CORP.
Gulfport, Miss.

THREE RIVERS CORP.
Midland, Mich.

NAICS 237

HEAVY AND CIVIL ENGINEERING CONTRACTOR

BARRIERE CONSTRUCTION CO. LLC
Matairie, La.

NAICS 238

SPECIALTY CONTRACTOR

FAITH TECHNOLOGIES
Menasha, Wis.

FISHER SAND & GRAVEL
Midland, Mich.

JD JAMES INC. DBA NATURE BRIDGES
Monticello, Fla.

LANDSCAPING MANAGEMENT
Tumon, Guam

SAFWAY SERVICES
Laurel, Md.

SPACECON LLC
New Castle, Del.

TUCKNOTT ELECTRIC
Livermore, Calif.

Championing a Diverse Industry

2017 NATIONAL DIVERSITY EXCELLENCE AWARD RECIPIENTS

The ABC National Diversity Excellence Awards

recognize members that display exemplary
diversity leadership in their workforce, supply
chain and community with best-in-class
recruitment policies, retention practices and
training and mentoring programs.

Presenting Sponsor



Panel of Judges

SHARON HAMILTON

President

Sentinel Fences & Contracting
Scottsdale, Ariz.

LAURA R. LAPIDUS, ESQ.

Management Liability Risk Control Director
CNA
New York

IRMA WEHMEYER

Chief Estimator/Project Manager
hth companies inc.
Union, Mo.

GENERAL CONTRACTOR OVER \$33 MILLION

HENSEL PHELPS

Tysons Corner, Va.

GENERAL CONTRACTOR UNDER \$33 MILLION

CHEROKEE ENTERPRISES INC.

Miami Lakes, Fla.

SMALL & EMERGING CONTRACTOR

GOVSOLUTIONS INC. | G FOR EVERYONE

Virginia Beach, Va.

SUBCONTRACTOR

SME INC. OF SEATTLE

Seattle

SUPPLIER

UNITED RENTALS INC.

Stamford, Conn.

ASSOCIATE

ATKINSON, ANDELSON, LOYA, RUUD & ROMO

Cerritos, Calif.

Contractor of the Year Award



ABC's 2017 Contractor of the Year is ACI Mechanical Inc. of Ames, Iowa, a full-service, design-build contractor that stands above the rest for its corporate integrity and commitment to safety, professional development and expert craftsmanship.

Since 1945, ACI Mechanical's team of engineers, project managers, skilled welders, pipefitters, sheet metal mechanics, service technicians and support staff have served commercial and industrial clients from coast to coast. The executive team of President Mike McCoy, Director of Project Management Kent Meyn, Director of Engineering Greg Braga, Prefabrication Manager Shon Smith, Production and Training Manager Chris Kayser and Human Resources Coordinator Laura Sundine invest significantly in the future workforce by mentoring, teaching and providing in-house continuing education to employees.

As a founding member of ABC's Iowa Chapter, ACI Mechanical's executives also have served as chairmen and board members at the chapter and national levels, while encouraging local and national political engagement to support important merit shop candidates and causes.

With an impressive safety record and an EMR under .65 for more than five years, ACI Mechanical has received dozens of industry safety awards through its commitment to ABC's STEP program. The company also sets itself apart as an early adopter of prefabrication, BIM and 3-D technology for enhanced jobsite communication and visualization, leading to efficient project delivery and a top reputation among clients. It is a three-time recipient of the chapter's Excellence in Construction Project of the Year Award and a frequent finalist and award winner on the national EIC level.

In addition, ACI Mechanical employees invest in their community, recently building a Habitat for Humanity house and a wounded veteran's home. The company hosts an annual appreciation event for employees, vendors and clients, and conducts an auction that has raised thousands of dollars for charitable organizations.

2017 STEP Diamond Recipients

A M King	DiSabatino Construction Co.	Lakeside Project Solutions LLC	RK Mechanical Inc.
Aggregate Technologies Inc.	Dryden Builders Inc.	Laketown Electric Corp. & Engineering	RLS Construction Group
Ajax Building Corp.	Eastern Industrial Services Inc.	Laser Electric Inc.	Robert A Tucknott & Associates Inc.
Allan Myers MD Inc.	EBCO General Contractor Ltd.	Lauger Cos. Inc.	Robins & Morton
Allfirst LLC	Edifice Inc.	Lone Star Resin Systems Inc.	Rodgers
Alloy Construction Service Inc.	Edwards Electric Service LLC	LPR Construction Co.	Ron J. Peterson Construction Inc.
Anthony T. Rinaldi LLC	Ellsworth Builders Inc.	M & D Mechanical Contractors Inc.	Rowan Electric Inc.
APAC - Mississippi Inc.	Elmstar Electric	M. C. Dean Inc.	RSI Roofing Inc.
Architectural Metals Inc.	Elzinga & Volkers Inc.	M. Davis & Sons Inc.	RUSH Construction Inc.
Atlantic Constructors Inc.	Enterprise Commercial Paving	Manhattan Construction Co.	S & S Roofing Systems Inc.
Atlas Electrical Construction	Erickson Builders & Co. Inc.	MAREK	S&B Engineers and Constructors Ltd.
Barriere Construction Co. LLC	Evergreen Industrial Services	Marquis Construction Services Inc.	S. W. Funk Industrial Contractors Inc.
Bartlett Cocke	Express Construction Co. Inc.	Marz Mountain Industries	Saulsbury Industries
Bergelectric Corp.	F.L. Crane & Sons Inc.	McCarthy Building Cos. Inc.	SC&A Construction Inc.
Black Electric Inc.	FaverGray	MDI Inc. General Contractors	SDV Construction Inc
Blasy Electric Inc.	FL Crane & Sons Inc.	Mechanical Air Systems Co.	SEDALCO Inc.
Bo-Mac Contractors Ltd.	Fogel-Anderson Construction Co.	Metcon Inc.	Service Unlimited Inc.
Bowdoin Construction Corp.	Fortune-Johnson Inc.	Metropolitan Contracting Co. LLC	Shawhan Sheet Metal LLC
BrandSafway Solutions	Foulger-Pratt	MetroPower Inc.	Shields Inc.
Brandt Construction Inc.	Gardner Glass & Glazing Inc.	Meyer Najem Construction	Slack & Co. Contracting Inc.
Breaking Ground Contracting Co.	Gaylor Electric Inc.	Midstate Site Development LLC	Slater Painting Co. Inc.
Brewer Construction Services LLC	Gbuild Construction Managers	Miller-Valentine Group	Southway Builders Inc.
Brown & Root Industrial Services LLC	Gilbane Building Co.	Mirage Industrial Group LLC	Spacecon LLC
Buist Electric Inc.	Glenn O. Hawbaker Inc.	MJM Masonry Inc.	Spartan Building Corp.
Burrow Global Services LLC	Gregory Construction Services	MKD Electric Inc.	STARCON International Inc.
Burton Construction	H & H Door Co.	MMR Constructors Inc.	Straight Line Industrial Services Inc.
C & H Electric Inc.	Harkins Builders Inc.	Monarc Construction Inc.	Structure Tone Southwest Inc.
C. S. Beatty Construction Inc.	Harvey-Cleary Builders	Moon Construction Services Inc.	Sweetwater Construction Corp.
Cadence McShane Construction Co. LLC	Haskell	Nabholz	Tecta America Zero Co.
Cajun Industries LLC	Hawaiian Rock Products	Nickle Electrical Cos.	Tellepsen Industrial
Campbell Plumbing & Mechanical Contractors	Heating & Plumbing Engineers Inc.	Norrell Construction Inc.	The Brevard Co.
Canyon Concrete Inc.	Heim Construction Co. Inc.	Notch Mechanical Constructors	The Lemoine Co. LLC
CBG Building Co.	Hensel Phelps	Oakridge Builders	The Mundy Cos.
CD Barnes Construction	HITT Contracting Inc.	Ocean Construction LLC	Thermal-Tec/Michigan Inc.
Centennial Contractors Enterprises Inc.	Hitt Contracting Inc.	Ocean Drywall Inc.	Three Rivers Corp.
Century Contractors Inc.	Hoar Construction LLC	Old Dominion Firestopping LLC	TIC-The Industrial Co.
Cherry Cos.	Holes Golden Triangle LLC	Old Dominion Insulation Inc.	Tracer Construction LLC
Chris Woods Construction Co Inc.	Holes Incorporated	Oldcastle Materials of Texas Inc.	Triangle Associates Inc.
CIANBRO	Hurts Wastewater Management Ltd.	PCE Constructors Inc.	Tri-Construction Co. Inc.
Circle 8 Crane Services	IE Pacific Inc.	PCL Industrial Construction Co.	Trio Electric
Circle Electric Inc.	Infratech International LLC	PCL Industrial Services	Turner Industries Group LLC
Classic Industrial Services Inc.	Insulations Inc.	Pearce & Moretto Inc.	VCS Security Systems Inc.
Clouse Construction Corp.	Interstate Electrical Contractors Inc.	Peterson Beckner Industries Inc.	VIRTEXCO Corp.
Color Works Painting Inc.	Interstates Cos.	Pioneer Roofing LLC	V-Talese Inc. Commercial Carpentry
Contractor Service & Fabrication Inc.	ISC Constructors LLC	Polk Mechanical Co.	W.S. Nielsen Co. Inc.
Copeland & Johns	Ivey Mechanical Co. LLC	Power Electric Co.	W.T. Byler Co.
Craig & Heidt Inc.	J & J Fire Protection Co. Inc.	Primoris Services Corp.	Wagner General Contractors Inc.
CSM Group	Jack B. Parson Cos.	QCI Thermal Systems	Wayman Fire Protection Inc.
D.E. Harvey Builders Inc.	JAMCO INC.	QSR Steel Corp. LLC	Weaver & Jacobs Constructors Inc.
DaKO Services Inc.	JM Coull Inc.	R & R Window Contractors Inc.	Westgate LLC
Del Rio Enterprises Inc.	Johnston Products of Dallas Inc.	R.C. Stevens Construction Co. Inc.	White-Spinner Construction Inc.
Delphi Construction Inc.	K & T Construction Co. Inc.	Rabalais I & E Constructors	Williams Building Co. Inc.
DESCCO Design & Construction Inc.	KBR	RCL Construction Co. Inc.	Windover Construction Inc.
	Keystone Concrete Placement	Ref-Chem L.P.	Wondra Construction Inc.
	Kirilin Builders LLC	Reliable Builders Inc.	Woodland Tilt-Up
	KS Industries LP	REPCON Inc.	Zampell
	Kwest Group LLC	REW Corp.	Zampell Refractories
	Lake Painting Inc.	Richards Corp.	

INDEX OF ALL WINNERS

ACI Mechanical Inc.	30	Haskell	27	Rodgers Builders Inc.	10, 23
Adolfson & Peterson Construction	12, 15, 19	Helix Electric	20	Rogers O'Brien Construction Co.	26
Atkinson, Andelson, Loya, Ruud & Romo	29	Hensel Phelps	21, 22, 29	Ross Group	26
Baker Concrete Construction Inc.	21	HITT Contracting Inc.	14	Roy Anderson Corp.	16, 27
Bancroft Construction Co.	22	Hoar Construction	23	S & B Engineers and Constructors	26
Barriere Construction Co. LLC	8, 21, 27	Hometown Plumbing & Heating	20	Safeway Services	27
Benchmark Construction Co. Inc.	22, 27	HPS Mechanical Inc.	20	Satterfield & Pontikes Construction Inc.	26
Bergelectric Corp.	4	hth cos. inc.	26	Saulsbury Industries	26
Bergstrom Electric Inc.	20	IAN Corporation	27	SDV Construction Inc.	26
Black Construction Corp.	15, 23, 26	Interstates	20	Sears Contract Inc.	6
Brasfield & Gorrie LLC	11, 13, 14, 19, 21, 23	ISC Constructors LLC	5, 20, 21	SME Inc. of Seattle	29
Brindley Construction LLC	15	JD James Inc. dba Nature Bridges	27	SouthCon Building Group LLC	10
C.O. Falter	27	JM Coull	26	Spacecon LLC	27
C.S. Beatty Construction Inc.	23	Keen Project Solutions LLC	21	Spacecon Specialty Contractors LLC	20
Caddell Construction Co.	17	KENPAT	5	SpawGlass	16, 21, 22
Cajun Industries LLC	9, 14, 27	Keystrect Construction Inc.	18, 22	SPC Mechanical	20
CarolinaPower	4	Kinsley Construction Inc.	19	Standard Constructors Inc.	21
Central Builders Inc.	23	Kirlin Builders LLC	26	Synergy Construction	11
Chamberlin Roofing & Waterproofing	7, 26	Kwest Group	8, 26	T.W. Frierson Contractor Inc.	22
Cherokee Enterprises Inc.	29	Landscaping Management	27	TDIndustries	7, 27
Cianbro	26	LeChase Construction Services LLC	23	Telligent Masonry LLC	6
CMS Corp.	22	M. Davis and Sons	27	The Cincinnati Air Conditioning Co.	6
Color Works Painting Inc.	26	Manhattan Construction Co.	26	The FaverGray Co.	23
Contractor Services and Fabrication	21	Marek	27	The Mundy Cos.	26
Coutts Brothers Inc.	27	Methuen Construction Co. Inc.	18	The Weitz Co.	22
DCM Architecture & Engineering LLC	11	Milender White	17	The Witmer Group	20
DPR Construction	22	MKD Electric	27	Three Rivers Corp.	27
Durr Heavy Construction LLC	9	MMR Constructors Inc.	9, 20	TIC - The Industrial Co.	23, 26
E.E. Reed Construction LP	10	MTech Mechanical	7	Todd & Sargent Inc.	22
Elzinga & Volkers Construction Inc.	26	NOVA Group Inc.	26	Triad Electric & Controls	4
EXCEL Contractors Inc.	8	PCL Industrial Construction Co.	26	Trio Electric	26
Fagen Inc.	26	Peterson Beckner Industries	27	TST Roofing	27
Faith Technologies	27	Pinkard Construction Co.	16	Tucknott Electric	27
Fargo Pacific	27	Poole Anderson Construction	21, 22	United Rentals Inc.	29
Fisher Sand & Gravel	27	Primoris I&M	26	W.S. Nielsen Co. Inc.	27
Gaylor Electric Inc.	20	RCL Construction	26	Walker Engineering	27
GE Insulation	27	Repcon Inc.	27	Wanzek Construction Inc.	17
GFP Cement Contractors	27	RK Mechanical Inc.	20	Warfel Construction Co.	18, 21
Gilbane Building Co.	26	RK Steel	21	WM Schultz Construction	27
Gorski Engineering Inc.	23	RLS Construction Group	26	Woodland Tilt-Up	20
govSolutions Inc. G for Everyone	29	Robins & Morton	12, 23	WT Byler Co.	27
GROUP Contractors LLC	13	Roche Constructors Inc.	21		
Haley-Greer Inc.	20	Rockford Construction	22		

Thank You to Our Sponsors

National Excellence in Construction Presenting Sponsor



National Safety Excellence Award Presenting Sponsor



We can show you more.®

National Diversity Excellence Award Presenting Sponsor



Contractor of the Year Presenting Sponsor



National Excellence in Construction Reception Sponsors





440 FIRST ST. NW, SUITE 200
WASHINGTON, D.C., 20001
(202) 595-1505
ABC.ORG