



32nd
Annual

National Excellence in Construction® Awards

TOP CONSTRUCTION PROJECTS AND TEAMS
WORLD-CLASS SAFETY PROGRAMS
CHAMPIONS OF INCLUSION, DIVERSITY AND EQUITY



National Excellence in Construction Awards

PANEL OF JUDGES / 3

Eagle Winners

SPECIALTY CONTRACTORS / 4
GENERAL CONTRACTORS / 11

Pyramid Winners

SPECIALTY CONTRACTORS / 22
GENERAL CONTRACTORS / 24

National Safety Excellence Awards

PANEL OF JUDGES / 29

Pinnacle Winners

GENERAL CONTRACTORS / 30
HEAVY AND CIVIL ENGINEERING CONTRACTORS / 30
SPECIALTY CONTRACTORS / 30

Excellence Winners

GENERAL CONTRACTORS / 31
HEAVY AND CIVIL ENGINEERING CONTRACTORS / 31
SPECIALTY CONTRACTORS / 31

Merit Winners

GENERAL CONTRACTORS / 31
HEAVY AND CIVIL ENGINEERING CONTRACTORS / 31
SPECIALTY CONTRACTORS / 31

National Inclusion, Diversity and Equity Excellence Awards

PANEL OF JUDGES / 33

National Inclusion, Diversity and Equity Excellence Award Winners

ASSOCIATE / 33
GENERAL CONTRACTOR / 33
SUBCONTRACTOR / 33
SUPPLIER / 33

National Contractor of the Year Award

National Contractor of the Year Winner / 34

Index of All Winners / 36

Program Sponsors / 37



ABC’s Top Performers lists recognize ABC member contractors’ achievements in safety, quality, diversity and project excellence ranked by work hours, with special designations identified. Published annually as a supplement to *Construction Executive* magazine, the listings highlight contractors that have earned ABC’s Accredited Quality Contractor credential for their commitment to corporate responsibility in quality, safety, craft and management education, talent management—including inclusion, diversity and equity— and community relations.

Built on Excellence

2021 EXCELLENCE
IN CONSTRUCTION

Award Recipients

The Excellence in Construction Awards honor the skill and creativity of the entire team—contractor, owner, architect and engineer—responsible for an outstanding merit shop construction project. The 2021 award recipients exceeded expectations in innovation and quality while continuing to adapt to unprecedented health and safety protocols.

Panel of Judges

Michelle Anysz

Director, Business Development
Construction Management
Association of America
Vienna, Virginia

Michael Beglinger

Deputy Associate Director, Office of
Planning and Project Development
Smithsonian Institution National Zoo
Washington

Laura Cooley

Founder
The Zip Syndicate
Orlando, Florida

Lowell Heck

Owner
Heck Commercial Construction
Consulting LLC
Broken Arrow, Oklahoma

Steve Kuhn

Executive Vice President
Sevan Multi-Site Solutions
Franklin, Tennessee

Tommy Linstroth, LEED Fellow

Founder and CEO
Green Badger
Savannah, Georgia

Dave Mielke

President
MIELKE Holdings LLC
Tampa, Florida

Joe Powell

Chairman
University Research Institute
Washington

Derek Ross

Deputy Director, OPDC, Construction
Division
Smithsonian Institution Facilities
Washington

Jeffrey Rubenstone

Senior Editor, Technology & Equipment
Engineering News-Record
New York

Dave Spencer

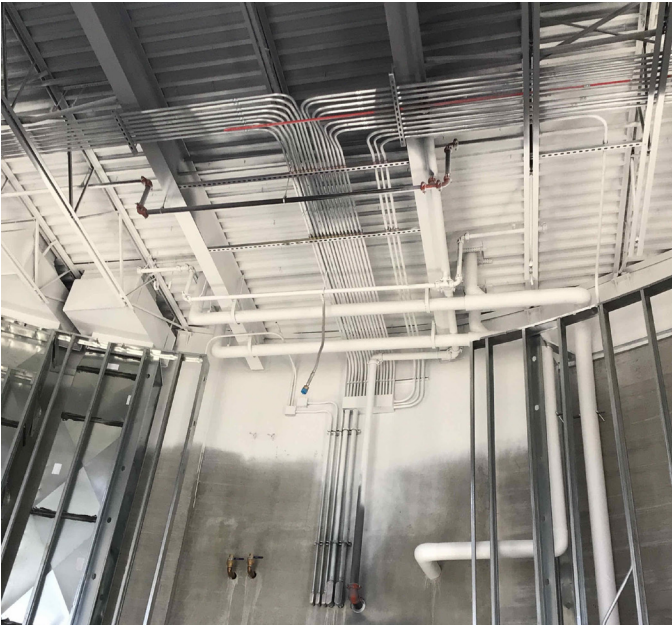
President
S. David & Co. LLC
Jacksonville, Florida

Richard Thomas, PLC

Director, State/Local Legislative Affairs
Design-Build Institute of America
Washington

Eagle Winners

Specialty Contractors



ELECTRICAL: COMMERCIAL > UP TO \$2 MILLION

C WILLMAR ELECTRIC SERVICE

N Lower Sioux Intergenerational Cultural Incubator

L Morton, Minnesota

CO Lower Sioux Indian Community

A BNIM Architects

E KLJ Engineering Inc.

Overcoming design flaws and a phase-out of the tenured engineering company, the opening of the Intergenerational Cultural Incubator helped the Lower Sioux Nation preserve its ancestry and rich heritage of trades, skills and tribal events.



ELECTRICAL: COMMERCIAL > \$2 TO \$10 MILLION

C BRITE ELECTRIC

N Virginia Beach Sports Center

L Virginia Beach, Virginia

CO City of Virginia Beach

A Clark Nexsen

E Clark Nexsen

GC MEB

The Virginia Beach Sports Center was a large, fast-paced, complex, design-assist electrical build requiring tens of thousands of work hours. The Brite Electric team delivered the new sports tourism and NCAA Championship facility well ahead of schedule.



ELECTRICAL: INDUSTRIAL > UP TO \$2 MILLION

C WESTGATE LLC

N IMTT Dock No. 4 E&I

L Geismar, Louisiana

CO IMTT

E Infinity Engineering Consultants

More than 13,000 work hours were completed without incident, all while communicating with plant leadership and other contractors to work safely and efficiently through multiple storms, a hard freeze and congested work areas for a high-quality and complete job.

Eagle Winners

Specialty Contractors



ELECTRICAL: INDUSTRIAL > \$2 TO \$10 MILLION

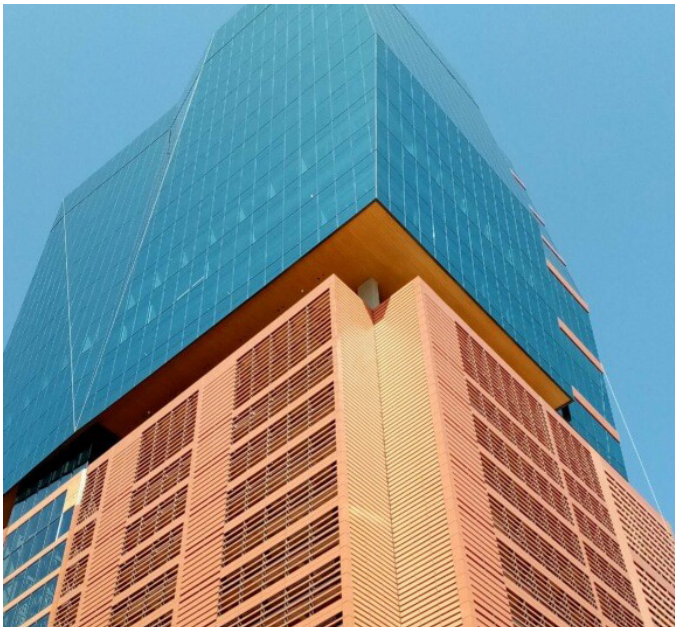
- C** INTERSTATES INC.
- N** Creekstone Farms Refrigerated Distribution Center
- L** Arkansas City, Kansas
- CO** Creekstone Farms Premium Beef LLC
- A** Schemmer
- E** Interstates Inc.
- GC** The Weitz Co.

Work on the Creekstone Farms refrigerated distribution center displayed excellence on several fronts, including innovative use of technology and time savings through prefabrication. With skilled planning and coordination, the project was delivered successfully and safely with no recordable accidents.



- ELECTRICAL > MORE THAN \$10 MILLION
- C** TRIAD ELECTRIC & CONTROLS
 - N** Shintech Plaquemine CA Plant-3 Project
 - L** Plaquemine, Louisiana
 - CO** Shintech
 - A** Shintech
 - E** Shintech

Triad’s contract with Shintech, the world’s leading manufacturer of PVC resins, was part of an \$18.8 million expansion at the Plaquemine, Louisiana, facility. Over 230,000 work hours were performed in only nine months with a perfect safety record.



EXTERIORS > EXTERIOR FINISHES

- C** HALEY-GREER INC.
- N** 405 Colorado
- L** Austin, Texas
- CO** Brandywine Realty Trust
- A** DudalPaine
- E** Brockette/Davis/Drake
- GC** J.E. Dunn Construction

Completion of this unique, high-rise office building and parking garage was challenging due to the 400-plus geometric shapes incorporated into the unitized curtain wall during the design and engineering planning phases.



Eagle Winners

Specialty Contractors



EXTERIORS > MASONRY, PRECAST OR STONE

- C** CAMARATA MASONRY SYSTEMS LTD.
- N** Rice University Music and Performing Arts Center
- L** Houston
- CO** William Marsh Rice University
- A** Allan Greenberg Architect LLC
- E** Walter P Moore
- GC** Linbeck Group LLC

The complex, Byzantine Romanesque architectural language of the 84,000-square-foot Rice University Music and Performing Arts Center features a reinforced CMU substrate, highly ornate cast stone with engineered anchorage, brick from St. Joe Brickworks in seven different bond patterns and handmade accent tiles.

INTERIORS > ACOUSTICAL, DRYWALL, MILLWORK OR PLASTER

- C** MAREK BROTHERS SYSTEMS LLC
- N** The Nancy and Rich Kinder Building at the Museum of Fine Arts, Houston
- L** Houston
- CO** The Museum of Fine Arts, Houston
- A** Steven Holl Architects
- GC** McCarthy Building Cos.

All contracts awarded were self-performed and 38,832, incident-free work hours went into the project. Marek Brothers Systems created a new partnership with Radius Track Co. and developed a new process to bend drywall, now called the “Dave McMillan Method.”



INTERIORS > INTERIOR FINISHES

- C** DAVID ALLEN COMPANY INC.
- N** Nido and Mariana Qubein Arena and Conference Center
- L** High Point, North Carolina
- CO** High Point University
- A** Perkins&Will
- E** Martin/Martin Inc.
- GC** Christman Co./Samet Corp.

High Point University’s new arena and conference center features a vibrant, colorful floor pattern with six different terrazzo colors incorporating HPU’s school colors. A massive, poured-in-place terrazzo monumental staircase and colorful compass rose medallions are striking design elements.



Eagle Winners

Specialty Contractors



MECHANICAL: COMMERCIAL >
UP TO \$2 MILLION

C CAPITAL INDUSTRIES

N The University of Texas at Austin
Student Union Building Renovations

L Austin, Texas

CO University of Texas

A Jacobs

E Jacobs

This project began with a late-night call to provide emergency plumbing services to repair a failed sewage ejector system in the basement of one of the university's most beloved landmarks. Overall, it was an 18-month journey to develop a permanent solution.

MECHANICAL: COMMERCIAL >
\$2 TO \$10 MILLION

C HOMETOWN PLUMBING
& HEATING

N University of Iowa Psychological and
Brain Sciences Building

L Iowa City, Iowa

CO University of Iowa

A BNIM

E IMEG Corp.

More than 11,000 incident-free work hours were completed on the plumbing and mechanical project for the University of Iowa's Psychological and Brain Sciences Building. The facility has more than 60,000 feet of linear piping between the plumbing and mechanical systems.



MECHANICAL: INDUSTRIAL > UP TO \$10 MILLION

C MIELKE MECHANICAL INC.

N Port Tampa Bay PURAGLOBE New
Manufacturing Facility

L Tampa, Florida

CO PURAGLOBE Syntainics LLC

A JJ Architectural Group Inc.

E HDR Engineering Inc. and Hall
Engineering Group

GC Batson-Cook Construction

Despite being an eight-year-long project with a delayed start, MIELKE overcame challenges to meet a critical deadline. The project required copious piping, steelwork and equipment setting, use of building information modeling, prefabrication and a vast amount of research, all while sourcing highly complex materials.

Eagle Winners

Specialty Contractors



MECHANICAL > MORE THAN \$10 MILLION

- C** TDINDUSTRIES
- N** Globe Life Field
- L** Arlington, Texas
- CO** Rangers Stadium Company LLC
- A** HKS Inc.
- E** ME Engineers
- GC** Manhattan Construction Co.

Globe Life Field was completed almost a full year ahead of schedule and included large, 104-inch ductwork, 91 miles of piping, more than 450 rooms with fixtures and approximately 9,000 tons of cooling.



SITework / LANDSCAPE / HARDSCAPE

- C** CAMARATA MASONRY SYSTEMS LTD.
- N** Houston Botanic Garden
- L** Houston
- CO** Houston Botanic Garden
- A** West 8/Clark Condon Associates Inc.
- GC** Harvey Builders Inc.

The focal point of the 132-acre Houston Botanic Garden is the 470-foot-green wall and fountain, constructed with a reinforced split-faced CMU structure that was visible from one side and clad with Calypso Coral stone quarried in the Dominican Republic.



SPECIALTY CONSTRUCTION: COMMERCIAL > UP TO \$2 MILLION

- C** HOLES INC.
- N** P.A. Smith Hotel The Geisel House Renovation
- L** Navasota, Texas
- CO** P.A. Smith Hotel LLC
- A** DWP Architects
- E** SMS Engineering

During the reconstruction of the P.A. Smith Hotel, four openings totaling 108 feet long by 44 inches deep were completed. Over a span of nine months and five mobilizations, two side-by-side historical buildings were conjoined.



Eagle Winners

Specialty Contractors



SPECIALTY CONSTRUCTION: COMMERCIAL >
\$2 TO \$10 MILLION

C GRIESENBECK ARCHITECTURAL
PRODUCTS INC.

N POST HTX

L Houston

CO Lovett Commercial

A OMA & Powers Brown Architecture

E IMEG Corp.

GC Harvey Builders

The largest walkable glass skylights ever produced in the United States were sourced, created and safely installed for POST HTX. The 102 skylights—totaling 2,184 square feet and 42,900 lbs.—were installed in 3,196 work hours with zero incidents.

SPECIALTY CONSTRUCTION: COMMERCIAL >
MORE THAN \$10 MILLION

C MILLER & LONG CO. INC.

N Avocet Tower

L Bethesda, Maryland

CO Stonebridge

A Cooper Carry

E Cagley & Associates

GC Balfour Beatty Construction LLC

Site constraints precluded the usual space for material staging, so some precast items were used, which led to project resequencing. The project also included fitting two tower cranes and placing a boom tower, while the accelerated schedule led to combining pours.



SPECIALTY CONSTRUCTION: INDUSTRIAL >
UP TO \$10 MILLION

C CAJUN INDUSTRIES LLC

N Dow Chemical - LAO River Water
Intake Line Replacement

L Plaquemine, Louisiana

CO Dow Chemical

E Dow Chemical

A design-build, deep-foundations solution was developed to support the replacement of the cooling water intake lines located in the Mississippi River at the Dow Chemical facility in Plaquemine, Louisiana.



Eagle Winners

Specialty Contractors



SPECIALTY CONSTRUCTION: INDUSTRIAL >
MORE THAN \$10 MILLION

C MOORE INDUSTRIES LLC

N ExxonMobil Quality Assurance
Laboratory HVAC Modifications

L Baton Rouge, Louisiana

CO ExxonMobil

E Marrero, Couvillon & Associates LLC

This \$12.9 million project required the demolition and installation of all HVAC system components within an 36,000-square-foot active laboratory in operation 24 hours a day. The project was completed under budget and ahead of schedule.



Eagle Winners

General Contractors



COMMERCIAL > UP TO \$5 MILLION

- C** SHINGOBEE BUILDERS INC.
- N** Holiday Stationstore No. 332
- L** Minneapolis
- CO** Circle K Stores Inc.
- A** Architectural Consortium LLC
- E** Sunde Engineering PLLC

Shingobee Builders reconstructed a Holiday Stationstore that was destroyed during the 2020 civil unrest in Minneapolis. The project met extremely condensed schedule requirements, despite severe winter conditions, a tight urban site and permitting delays.

COMMERCIAL > \$5 TO \$10 MILLION

- C** GREYSTONE CONSTRUCTION
- N** Greystone Construction Office Building
- L** Shakopee, Minnesota
- CO** GS Moving Up LLC
- A** Tushie Montgomery Architects
- E** Sandman Structural Engineers

The high-profile facility is located in an entertainment region attracting more than 10 million visitors annually. It features a two-story glass atrium, floating staircase, solar panel system, wood-wrapped clerestory, rooftop deck and lush garden. It was completed under budget with zero incidents.



COMMERCIAL > \$10 TO \$25 MILLION

- C** FORRESTER CONSTRUCTION CO.
- N** Euro Motorcars Mercedes Benz
- L** Bethesda, Maryland
- CO** Euro Motorcars Realty Holdings Inc.
- A** Penney Design Group LLC
- E** Dunlap Engineering Inc.

The 26,000-square-foot showroom, measuring 30 feet tall, was crafted with a structural steel frame clad in curtain wall with composite aluminum panels, featuring a level-five finish on abstract drywall, glass wall panels and Italian-imported tile floors throughout.



Eagle Winners

General Contractors



COMMERCIAL > \$25 TO \$100 MILLION

C GILBANE BUILDING CO.

N The Ion

L Houston

CO Rice Management Co.

A Gensler

E Walter P Moore

Rice University had the vision to repurpose the 310,000-square-foot, former Sears Building into an innovation hub. The renovation incorporated the additions of two new floors, ground floor storefronts and a curtainwall facade.

COMMUNITY / PUBLIC SERVICE

C HARVEY-CLEARY BUILDERS

N Pease Park Kingsbury Commons

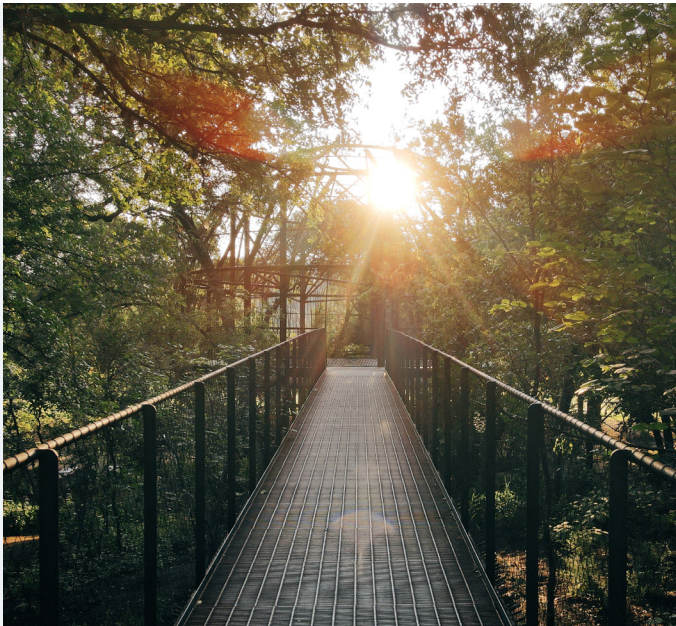
L Austin, Texas

CO Pease Park Conservancy

A Ten Eyck Landscape Architects Inc.

E GarzaEMC

Pease Park is Austin's oldest public park. Renovations included unique playground equipment, a state-of-the-art water feature, volunteer and restroom buildings, bocce and basketball courts, numerous native plantings, an innovative treescape, a Lueders Limestone serpentine wall and repurposing of the historic Tudor Cottage.



FEDERAL GOVERNMENT / MILITARY > UP TO \$15 MILLION

C CMS

N Replacement of Tank 34 and Vehicle Fueling Station

L Luis Munoz Marin Air National Guard Base, Puerto Rico

CO 772 ESS/PKA

E Robert and Co.

CMS demolished an existing JP-8 tank and installed a new 75,000-gallon JP-8 tank; repaired an existing 7,280-square-foot containment dike; relocated, reinstalled and recoated 4,000-gallon diesel fuel and MOGAS tanks; constructed a 2,900-square-foot vehicle fuel station driveway; modified 220 linear feet of seven-foot security fencing; and installed additional exterior lighting.



Eagle Winners

General Contractors



FEDERAL GOVERNMENT / MILITARY >
\$15 TO \$100 MILLION

C BRASFIELD & GORRIE LLC

N Carroll A. Campbell Jr.
U.S. Courthouse

L Greenville, South Carolina

CO General Services Administration

A HBRA Architects

E MMSA Inc.

The project is a new \$87 million U.S. courthouse constructed with 709,087 work hours and pending LEED v4 Gold and SITES Silver certification. More than 250 potential changes were resolved, with zero schedule impact.

PRODUCTIVITY
AWARD WINNER



HEALTH CARE > UP TO \$10 MILLION

C KEYSTRUCT CONSTRUCTION LLC

N York VA Clinic Renovations

L York, Pennsylvania

CO Department of Veterans Affairs

A Buchart Horn

E Buchart Horn

Keystruct renovated a vacant space and updated an existing local clinic for the U.S. Department of Veterans Affairs three months ahead of schedule. Phasing and planning minimized impacts to tenants, recycling construction debris helped meet required sustainable practices and the tight interior necessitated coordination between trades.



HEALTH CARE > \$10 TO \$25 MILLION

C LOTT BROTHERS
CONSTRUCTION CO.

N Dell Children's Specialty Pavilion

L Austin, Texas

CO Ascension Texas

A HKS Inc.

E WSP USA

This project was a finish-out of a medical office building shell. The owner wanted a speed-to-market, integrated project delivery, which entailed extensive collaboration with the owner and another general contractor.

PRODUCTIVITY
AWARD WINNER



Eagle Winners

General Contractors



HEALTH CARE > \$25 TO \$100 MILLION

C **ROBINS & MORTON**

N Duke Health Anlyan Generator HUB

L Durham, North Carolina

CO Duke Health

A BSA LifeStructures

E RMF Engineering

Duke Health’s Anlyan Generator HUB provides electrical power to support existing and planned patient space at Duke’s Durham campus. Robins & Morton met the client’s desire for a low-profile building by constructing much of the structure and supporting infrastructure underground.



HISTORICAL RESTORATION / RENOVATION > UP TO \$25 MILLION

C **IMPETUS, A PALMISANO CO.**

N Hotel Saint Vincent Historic Restoration and Renovation

L New Orleans

CO Kupperman Cos.

A MetroStudio

E EMB LLC (MEP) / PACE Group LLC (Structural) / Northside Electric (Electrical)

The project was a complex historic renovation of Hotel Saint Vincent. The 75-room boutique hotel campus renovation included five historically designated buildings, a newly constructed event space, a courtyard, a cabana, a new swimming pool area, restaurants and bars.



HISTORICAL RESTORATION / RENOVATION > \$25 TO \$100 MILLION

C **JORDAN FOSTER CONSTRUCTION**

N The Plaza Hotel Pioneer Park

L El Paso, Texas

CO Franklin Mountain Management LLC

A Cooper Carry

E Uzun + Case

The project entailed the renovation of the 147,650-square-foot historic hotel, as well as the construction of a new parking garage. Work was conducted with the National Parks Service, Texas Historic Commission and El Paso Historic Landmark Commission to complete the project.

DESIGN-BUILD
AWARD WINNER

Eagle Winners

General Contractors



INDUSTRIAL > UP TO \$5 MILLION

C PERFORMANCE CONTRACTORS INC.

- N** Innophos Evaporator Project
- L** Geismar, Louisiana
- CO** Innophos Inc.
- E** GHD

Performance Contractors overcame late equipment deliveries, last-minute changes and unfinished, client-provided fabrication—all while delivering the project safely and with the utmost quality. The project was completed with turnarounds and extended hours.



INDUSTRIAL > \$5 TO \$15 MILLION

C BEARD CONSTRUCTION GROUP LLC

- N** Dow—Project Frigate
- L** Port Allen, Louisiana
- CO** Dow Chemical
- E** Dow Chemical

More than 42,000 incident-free hours were completed during this six-month project. Even with four weeks of severe weather conditions, work was still completed on time, while Beard Construction conducted an adaptation to a specialty water stop.



INDUSTRIAL > \$15 TO \$25 MILLION

C PERFORMANCE CONTRACTORS INC.

- N** Marathon Dickinson Renewable Diesel Project
- L** Dickinson, North Dakota
- CO** Marathon Petroleum
- E** WorleyParsons

Marathon's existing refinery was converted into a 100% renewable diesel plant. Performance Contractors set modules, erected structural steel, set equipment and installed piping. The project was safely executed in subfreezing temperatures and during the COVID-19 pandemic.



Eagle Winners

General Contractors



INDUSTRIAL > \$25 TO \$100 MILLION

- C** EXCEL GROUP
- N** Linde/Praxair HyCO Plant
- L** Sweeny, Texas
- CO** Linde/Praxair
- E** Linde/Praxair

EXCEL constructed the largest hydrogen production plant in the United States under budget and on a fast-track schedule, simultaneously overcoming weather events and numerous changes in scope.



INFRASTRUCTURE: HEAVY

- C** T.W. FRIERSON CONTRACTOR INC.
- N** NES 11th Avenue Substation and Parking Garage
- L** Nashville, Tennessee
- CO** Aubrey Silvey Enterprises
- A** Moody Nolan
- E** Logan Patri Engineering

Located in downtown Nashville, this highly visible substation on NES's main campus houses four transformers that distribute energy to more than 410,000 customers, including all of Nashville, Davidson County and parts of the six surrounding counties, covering 700 square miles. An aesthetically pleasing screening structure encloses the building, increasing reliability and safety.



INSTITUTIONAL > UP TO \$5 MILLION

- C** KITCHELL
- N** University of Houston Graduate College of Social Work Renovation
- L** Houston
- CO** University of Houston
- A** RDLR Architects
- E** Infrastructure Associates

Kitchell developed smart strategies and detailed logistics to get materials onto this congested site, avoiding disruption to the urban campus and underground utilities—all while using thoughtful phasing to protect a fragile artwork installation.

Eagle Winners

General Contractors



INSTITUTIONAL > \$5 TO \$10 MILLION

C BROADMOOR LLC

N New Orleans Museum of Art

L New Orleans

CO New Orleans Museum of Art

A EskewDumezRipple

E Julien Engineer & Consulting

The New Orleans Museum of Art renovations introduced a custom skylight, tied in four facades constructed during vastly different times and featured the installation of the locally beloved and restored Alferez panels as a permanent collection within the facility.

INSTITUTIONAL > \$10 TO \$25 MILLION

C FORRESTER CONSTRUCTION CO.

N Corpus Christi Catholic Church

L South Riding, Virginia

CO Catholic Diocese of Arlington

A McCrery Architects PLLC

E J2 Engineers Inc.

Corpus Christi, located in South Riding, Virginia, is a 20,000-square-foot Catholic church designed in a traditional Gothic style. Construction was completed early and included an 18-acre sitework package, steel structure, limestone facade, rose window, custom-built steeple and ornate finishes.



INSTITUTIONAL > \$25 TO \$100 MILLION

C ROCHE CONSTRUCTORS INC.

N Dr. Justina Ford Elementary School

L Centennial, Colorado

CO Arapahoe County School District No. 6

A MOA Architecture

E Envision Engineers Inc.

Located in Centennial, Colorado, the existing school facility was temporarily relocated in 2019. After the existing building was abated and demolished, Roche constructed the new Dr. Justina Ford Elementary School, as well as its new playgrounds and fields.



Eagle Winners

General Contractors



MEGA-PROJECT > \$100 TO \$160 MILLION

- C** ROBINS & MORTON
- N** Duke Raleigh Hospital South Pavilion
- L** Raleigh, North Carolina
- CO** Duke Health
- A** HOK
- E** AEI Affiliated Engineers

The 265,000-square-foot South Pavilion fulfills Duke Health’s vision to create a world-class treatment facility, which required a multilayered planning and preconstruction effort to upgrade infrastructure and mitigate the risks of building within a few feet of the adjacent North Pavilion.



MEGA-PROJECT > OVER \$160 MILLION

- C** HENSEL PHELPS
- N** McGregor Square
- L** Denver
- CO** Colorado Rockies Baseball Club Ltd.
- A** Stantec
- E** Martin/Martin Inc.

The 860,000-square-foot McGregor Square project is a vibrant, mixed-use development located adjacent to the Colorado Rockies Coors Field. This fast-track, CMAR project delivered a landmark building in downtown Denver.



GREENER TOMORROW
AWARD WINNER



PRE-ENGINEERED BUILDING

- C** BRINDLEY CONSTRUCTION LLC
- N** Wolf Gap Education Center
- L** Pulaski, Tennessee
- CO** Wolf Gap
- A** Emmett D. Smith & Associates
- E** EMC Structural Engineers

Wolf Gap Education Center was constructed during the area’s wettest winter in recorded history and the COVID-19 pandemic. Despite those challenges, the project team built a one-of-a-kind facility on time and on budget.

DESIGN-BUILD
AWARD WINNER

Eagle Winners

General Contractors



PUBLIC WORKS / ENVIRONMENTAL

- C** **GARNEY COS. INC.**
- N** Vista Ridge Regional Water Supply Project
- L** San Antonio
- CO** Central Texas Regional Water Supply Corp.
- A** CP&Y
- E** Pape-Dawson Engineers

The Vista Ridge water supply project is the largest water supply project in Texas history and the largest public-private water partnership in North America. It is composed of 149 miles of pipe, three pump stations and a terminus facility.

DESIGN-BUILD
AWARD WINNER

RENOVATION > UP TO \$5 MILLION

- C** **SKILES GROUP**
- N** ParkerFit Functional Fitness Performance Center
- L** Dallas
- CO** Parker University
- A** Perkins&Will
- E** Campos Engineering Inc.

From the ruins of a tornado-damaged warehouse on the campus of Parker University to a 20,000-square-foot, state-of-the-art activity center, the ParkerFit project was delivered on time, under budget and without a single injury despite more than 20,000 hours worked.



RENOVATION > \$5 TO \$15 MILLION

- C** **CSM GROUP**
- N** Greenleaf Trust Office Building
- L** Traverse City, Michigan
- CO** Catalyst Development Co. LLC
- A** TowerPinkster
- E** TowerPinkster

Life was brought back into Old City Hall by renovating and modernizing the 117-year-old building for use as Greenleaf Trust’s new office space. Originally built in 1904, the 16,926-square-foot building features tenant spaces equipped with new, modern features.



Eagle Winners

General Contractors



RENOVATION > \$15 TO \$100 MILLION

- C** BRASFIELD & GORRIE LLC
- N** GRAIL Laboratory and Research Facility at Park Point
- L** Durham, North Carolina
- CO** GRAIL LLC
- A** Perkins&Will
- E** Affiliated Engineers Inc.

GRAIL's 110,000-square-foot interior build-out of existing space brought a new state-of-the-art facility to North Carolina's Research Triangle Park. The fast-track project included 60,000 square feet of commercial laboratory space for DNA sequencing, accessioning, reagent manufacturing and cold storage.



RESIDENTIAL > MULTI-FAMILY AND CONDOMINIUM

- C** WCS CONSTRUCTION LLC
- N** Avec on H Street
- L** Washington
- CO** H Street Residential LLC and H Street Retail LLC
- A** Torti Gallas + Partners
- E** SKA Consulting Engineers

This monumental 419-unit, 430,887-square-foot space includes seven resident levels and covers two city blocks. It features a 10,000-square-foot lobby, leasing and club room spaces, rooftop and resort-style amenities seated atop a two-story, 54,000-square-foot retail level space. The project also features dedicated retail and residential parking levels.



RESIDENTIAL > SINGLE-FAMILY

- C** BLACK CONSTRUCTION CORP.
- N** Shimizu Residence
- L** Yona, Guam
- CO** Private Residence
- A** Architects Laguana LLC
- E** GHD Inc.

Black Construction Corp. completed this private residence project with an outstanding safety record, over 67,340 work hours amassed and no lost time or incidents.



Eagle Winners

General Contractors



SPECIAL PROJECTS > UP TO \$10 MILLION

C SHAYCORE

N COVID-19 Modular Medical Unit

L Jacksonville, Florida

CO JWB Real Estate Capital

A HDR Inc.

The mobile COVID-19 treatment facility was constructed from a standard shipping container in 96 hours for temporary or permanent use in any medical or natural disaster. After completion, it was immediately transportable via highway, rail or ship throughout the world.

SPECIAL PROJECTS > \$10 TO \$100 MILLION

C MESSER CONSTRUCTION CO.

N East Terminal Phase II Expansion—
“The Plaza” at Charlotte Douglas
International Airport

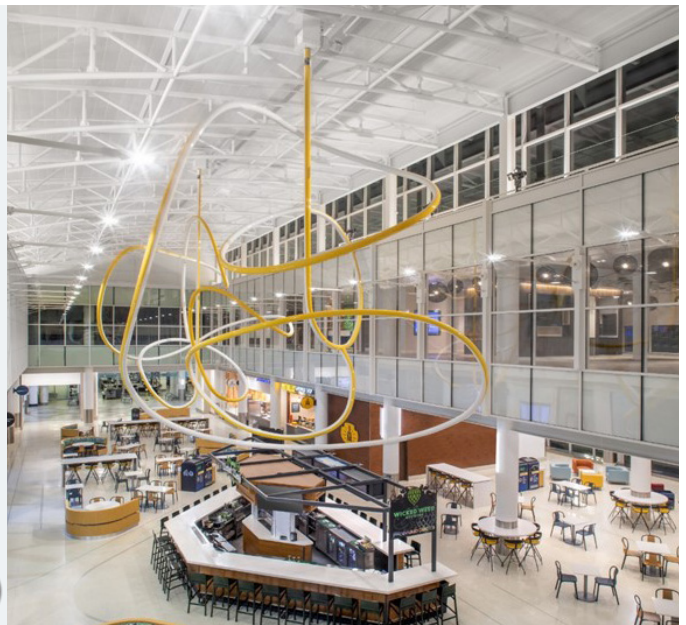
L Charlotte, North Carolina

CO Charlotte Douglas International Airport

A DAS Architecture Inc.

E McCracken & Lopez P.A.

The Plaza project was a phased transformation executed in an active airport. The scope of the work involved 51,000 square feet of new construction and 6,800 square feet of renovation that included a three-story addition. Work included a retail/concession space, offices, escalators, elevators, docks and a baggage conveyor extension.



Pyramid Winners

Specialty Contractors

ELECTRICAL: COMMERCIAL > UP TO \$2 MILLION

- C** **STRONGHOLD ENGINEERING INC.**
- N** STEM Huntington Library
- L** San Marino, California
- CO** The Huntington Library, Art Museum, and Botanical Gardens
- A** Eco Power
- E** Eco Power
- GC** Stronghold Engineering Inc.

ELECTRICAL: COMMERCIAL > \$2 TO \$10 MILLION



- C** **HELIX ELECTRIC**
- N** Meow Wolf Omega Mart
- L** Las Vegas
- CO** Meow Wolf
- A** Moser Architecture Studio
- E** MSA Engineering Consultants
- GC** Martin-Harris Construction

ELECTRICAL: INDUSTRIAL > UP TO \$2 MILLION



- C** **ISC CONSTRUCTORS LLC**
- N** Plant Crist Hurricane Sally Restoration
- L** Pensacola, Florida
- CO** ControlWorx
- GC** ISC Constructors LLC

ELECTRICAL: INDUSTRIAL > \$2 TO \$10 MILLION

- C** **TRIAD ELECTRIC & CONTROLS**
- N** MPLX Pit 7 Expansion
- L** Mt. Airy, Louisiana
- CO** MPLX
- E** MPLX
- GC** Cajun Industries

ELECTRICAL > MORE THAN \$10 MILLION

- C** **RABALAIS I & E CONSTRUCTORS**
- N** Corazon Ranch 1 Solar Project
- L** Laredo, Texas
- CO** BayWa r.e.
- E** Worley Field Services Inc.
- GC** Worley Field Services Inc.

EXTERIORS > MASONRY, PRECAST OR STONE

- C** **CHAMBERLIN ROOFING & WATERPROOFING**
- N** Wursthalle Concrete Repairs
- L** New Braunfels, Texas
- CO** Wurstfest Association of New Braunfels
- A** Marmon Mok Architecture
- E** Lundy & Franke Engineering
- GC** Byrne Construction Services

INTERIORS > ACOUSTICAL, DRYWALL, MILLWORK OR PLASTER

- C** **KARSTEN INTERIOR SERVICES**
- N** The Ion
- L** Houston
- CO** Rice Management Co.
- A** Gensler
- E** Walter P Moore
- GC** Gilbane Building Co.

INTERIORS > INTERIOR FINISHES



- C** **DAVID ALLEN COMPANY INC.**
- N** Wade V Office Building
- L** Raleigh, North Carolina
- CO** Dominion Realty Partners
- A** Rule Joy Trammel + Rubio LLC
- E** Uzun + Case LLC
- GC** Choate Construction Co.

Pyramid Winners

Specialty Contractors



MECHANICAL: COMMERCIAL > \$2 TO \$10 MILLION

C **TD INDUSTRIES**

- N** Moody Amphitheater at Waterloo Park
- L** Austin, Texas
- CO** Waterloo Greenway Conservancy
- A** Thomas Phifer and Partners
- E** Altieri Sebor Wieber LLC
- GC** DPR Construction



MECHANICAL: INDUSTRIAL > UP TO \$10 MILLION

C **M. DAVIS & SONS INC.**

- N** Second Cocoa Bean Grinding Line
- L** Newark, Delaware
- CO** United Cocoa Processor Inc.
- E** MacIntosh Engineering (Structural) / Buhler Group (Equipment)



MECHANICAL > MORE THAN \$10 MILLION

C **MTECH MECHANICAL**

- N** McGregor Square
- L** Denver
- CO** Colorado Rockies
- A** Stantec
- E** ME Engineers
- GC** Hensel Phelps



SPECIALTY CONSTRUCTION: COMMERCIAL > UP TO \$2 MILLION

C **CAJUN INDUSTRIES LLC**

- N** Amazon Project PINE Distribution Center
- L** Canton, Mississippi
- CO** Amazon.com Inc.
- A** BL Cos.
- E** BL Cos.



SPECIALTY CONSTRUCTION: COMMERCIAL > \$2 TO \$10 MILLION

C **CAJUN INDUSTRIES LLC**

- N** Entergy Gibson Substation Flood Mitigation
- L** Gibson, Louisiana
- CO** Entergy Louisiana
- E** EDG Inc.

SPECIALTY CONSTRUCTION: COMMERCIAL > MORE THAN \$10 MILLION

C **KPOST ROOFING & WATERPROOFING**

- N** Globe Life Field
- L** Arlington, Texas
- CO** MLB Texas Rangers & The City of Arlington
- A** HKS Inc.
- E** Walter P Moore
- GC** Manhattan Construction Co.



SPECIALTY CONSTRUCTION: INDUSTRIAL > UP TO \$10 MILLION

C **MOORE INDUSTRIES LLC**

- N** ExxonMobil Mont Belvieu Plastics Plant Laboratory HVAC and Domestic Water Replacement
- L** Mont Belvieu, Texas
- CO** CBRE / ExxonMobil
- A** Page Southerland Page Inc.
- E** Page Southerland Page Inc.

SPECIALTY CONSTRUCTION: INDUSTRIAL > MORE THAN \$10 MILLION

C **CHEMEX GLOBAL INC.**

- N** Hugoton Renewable Diesel Plant
- L** Hugoton, Kansas
- CO** Seaboard Energy
- E** Chemex Global Inc.
- GC** Fagen Inc.

Pyramid Winners

General Contractors

COMMERCIAL > UP TO \$5 MILLION

- C** **THREE RIVERS CORP.**
- N** Sanford Hardware
- L** Sanford, Michigan
- CO** Sanford Hardware LLC
- A** Three Rivers Corp.
- E** MacMillan Associates



COMMERCIAL > \$5 TO \$10 MILLION

- C** **GIBBS CONSTRUCTION**
- N** Ochsner Early Learning Center
- L** Jefferson, Louisiana
- CO** Ochsner Clinic Foundation
- A** Page Southerland Page Inc.
- E** Schrenk Endom & Flanagan LLC

COMMERCIAL > \$10 TO \$25 MILLION

- C** **ERHARDT CONSTRUCTION**
- N** Amy Van Andel Library—Ada Community Center
- L** Ada, Michigan
- CO** Ada Township
- A** Progressive AE
- E** Progressive AE

COMMERCIAL > \$25 TO \$100 MILLION

- C** **FOULGER-PRATT CONTRACTING LLC**
- N** Beckert's Park
- L** Washington
- CO** FP Capitol Holdings LLC
- A** BKV Group
- E** BKV Group

FEDERAL GOVERNMENT / MILITARY > UP TO \$15 MILLION



- C** **FLINTCO LLC**
- N** Lexington Storage Hangar
- L** Lexington, Oklahoma
- CO** Oklahoma Military Department
- A** FSB Architects & Engineers
- E** FSB Architects & Engineers

FEDERAL GOVERNMENT / MILITARY > \$15 TO \$100 MILLION

- C** **IICON CONSTRUCTION COLORADO LLC**
- N** 117th Space Battalion Readiness Center
- L** Colorado Springs, Colorado
- CO** Colorado National Guard
- A** Burns & McDonnell
- E** Burns & McDonnell

HEALTH CARE > \$10 TO \$25 MILLION

- C** **GREENHUT CONSTRUCTION CO.**
- N** Summit Medical Center
- L** Pensacola, Florida
- CO** NNGS Development LLC
- A** Perkins&Will
- E** TLC Engineering Solutions

HEALTH CARE > \$25 TO \$100 MILLION



- C** **BENCHMARK CONSTRUCTION CO. INC.**
- N** UPMC West Shore Hospital Overbuild
- L** Mechanicsburg, Pennsylvania
- CO** UPMC
- A** Stantec
- E** Stantec



HISTORICAL RESTORATION / RENOVATION >
UP TO \$25 MILLION

C ROCHE CONSTRUCTORS INC.

- N** Gregory Street Phase Two
- L** Black Hawk, Colorado
- CO** City of Black Hawk
- A** PEH Architects Inc.
- E** Baseline Engineering Corp. and Mozer-Renn Structural Service Inc.

HISTORICAL RESTORATION / RENOVATION >
\$25 TO \$100 MILLION

C MW BUILDERS

- N** Flashcube Apartments
- L** Kansas City, Missouri
- CO** Worcester Investments
- A** Clockwork Architecture + Design
- E** FSC Inc.



INDUSTRIAL > UP TO \$5 MILLION

C GROUP CONTRACTORS LLC

- N** Enbridge Pipeline Metering Station Elevated Compressor Deck
- L** Grand Chenier, Louisiana
- CO** Enbridge
- E** EN Engineering



INDUSTRIAL > \$5 TO \$15 MILLION

C REF-CHEM LP

- N** Vistra Brightside Solar Facility
- L** Oakville, Texas
- CO** Vistra Corp.
- E** Burns & McDonnell



INDUSTRIAL > \$15 TO \$25 MILLION

C RES CONTRACTORS LLC

- N** Honeywell ACLON Unit Train 5
- L** Geismar, Louisiana
- CO** Honeywell Performance Materials and Technologies
- E** Orion Engineers & Constructors



INDUSTRIAL > \$25 TO \$100 MILLION

C BRASFIELD & GORRIE LLC

- N** Airbus A320 Dual-Bay Assembly Hangar
- L** Mobile, Alabama
- CO** Mobile Airport Authority
- A** FSB Architects & Engineers
- E** Thompson Engineering (Civil)



INFRASTRUCTURE: HEAVY

C SPAWGLASS

- N** Robert L.B. Tobin Land Bridge at Phil Hardberger Park
- L** San Antonio
- CO** City of San Antonio Transportation and Capital Improvements Department
- A** Rialto Studio
- E** Arup



INSTITUTIONAL > \$5 TO \$10 MILLION

C SPAWGLASS

- N** Brighton Center Leveling the Playing Field for Kids with Delays & Disabilities Program & Facility Expansion
- L** San Antonio
- CO** Brighton Center
- A** Overland Partners
- E** Intelligent Engineering Services

Pyramid Winners

General Contractors

INSTITUTIONAL > \$10 TO \$25 MILLION

C PYRAMID CONSTRUCTION SERVICES INC.

- N** Kim S. Phipps Admissions and Welcome Center
- L** Mechanicsburg, Pennsylvania
- CO** Messiah University
- A** Greenfield Architects Ltd.
- E** Barton Associates Inc. (MEP)



PRE-ENGINEERED BUILDING

C MOORE INDUSTRIES LLC

- N** Entergy Montgomery County Power Station Combined Cycle
- L** Willis, Texas
- CO** McDermott / Entergy
- A** WDG
- E** WDG



INSTITUTIONAL > \$25 TO \$100 MILLION

C HENSEL PHELPS

- N** Baltimore/Washington International Thurgood Marshall Airport Concourse A Five Gate Extension
- L** Baltimore
- CO** Maryland Aviation Administration
- A** WSP

PUBLIC WORKS / ENVIRONMENTAL

C METHUEN CONSTRUCTION CO. INC.

- N** Peirce Island Wastewater Treatment Facility Upgrade
- L** Portsmouth, New Hampshire
- CO** City of Portsmouth
- A** AECOM
- E** AECOM

MEGA-PROJECT > \$100 TO \$160 MILLION

C KITCHELL

- N** We-Ko-Pa Casino Resort
- L** Fort McDowell, Arizona
- CO** Fort McDowell Yavapai Nation
- A** TBE Architects
- E** Chavez-Grievess Consulting Engineers Inc.

RENOVATION > UP TO \$5 MILLION

C BRINDLEY CONSTRUCTION LLC

- N** Legends Restaurant
- L** Columbia, Tennessee
- CO** Legends Restaurant
- A** Nuber Architecture LLC



MEGA-PROJECT > OVER \$160 MILLION

C MANHATTAN CONSTRUCTION CO.

- N** Globe Life Field
- L** Arlington, Texas
- CO** Texas Rangers
- A** HKS Inc.
- E** Walter P Moore



RENOVATION > \$5 TO \$15 MILLION

C BENCHMARK CONSTRUCTION CO. INC.

- N** Penn State Hershey Medical Center Endoscopy Renovation
- L** Hershey, Pennsylvania
- CO** Penn State Health Milton S. Hershey Medical Center
- A** EwingCole
- E** EwingCole



RENOVATION > \$15 TO \$100 MILLION

- C** **WHITE CONSTRUCTION CO.**
- N** Cline's Landing Hurricane Restoration
- L** Port Aransas, Texas
- CO** Cline's Landing Association
- A** STG Design

RESIDENTIAL > MULTI-FAMILY AND CONDOMINIUM

- C** **ROGERS-O'BRIEN CONSTRUCTION CO. LLC**
- N** Torre
- L** Austin, Texas
- CO** Parallel Co.
- A** Architect - Rhode Partners
Interior Designer- Levy Dykema
- E** Dunaway (Civil) / RLG Consulting Engineers (Structural) / Schmidt & Stacy Consulting Engineers (MEP) / Infinisys (Low Voltage Engineer)

RESIDENTIAL > SINGLE-FAMILY

- C** **HOLTZ BUILDERS INC.**
- N** Ryan Lake Home
- L** Merrimac, Wisconsin
- CO** Bill and Laurie Ryan
- A** Jason Ryan, AIA

SPECIAL PROJECTS > UP TO \$10 MILLION

- C** **SYNERGY CONSTRUCTION INC.**
- N** Juanita Beach Park Bathhouse
- L** Juanita, Washington
- CO** City of Kirkland
- A** EHDD
- E** Quantum Consulting Engineers

SPECIAL PROJECTS > \$10 TO \$100 MILLION

- C** **ADOLFSON & PETERSON CONSTRUCTION**
- N** CSU Moby GEO Exchange
- L** Fort Collins, Colorado
- CO** Colorado State University
- A** alm2s
- E** The Ballard Group

A Foundation of Safety

2021 NATIONAL
SAFETY EXCELLENCE

Award Recipients

From exceptional safety records to rigorous training and education programs, winners of the National Safety Excellence Awards excelled in all areas of ABC's STEP Safety Management System, demonstrating an extraordinary commitment to world-class safety.

Presenting Sponsor



Panel of Judges

Michael Bennett

Vice President
Cianbro
Pittsfield, Maine

John Bolt

Vice President, HSE
S & B Engineers and Constructors
Ltd.
Houston

Paul Crivac

Corporate Director of Safety
Three Rivers Corp.
Midland, Michigan

Tonya Warren

Director of Safety and Risk
Management
Metcon Inc.
Raleigh, North Carolina

Melanie Laird

Chief Strategy Officer
Field Control Analytics
Dallas

Shelley Sutton

Vice President
hth cos. inc.
Union, Missouri

James Thompson

Director of EH&S
Kwest Group LLC
Perrysburg, Ohio

Frank Trujillo

Vice President
Miller & Long Co. Inc.
Bethesda, Maryland

Phillip Ireland, CHST

Director of Safety
Benchmark Construction Co. Inc.
Brownstown, Pennsylvania

Pinnacle Winners

NAICS 236
GENERAL
CONTRACTORS



GRAYCOR SOUTHERN INC.
Kennesaw, Georgia



SDV CONSTRUCTION INC.
Albuquerque, New Mexico



HASKELL
Jacksonville, Florida

STELLAR GROUP INC.
Jacksonville, Florida



**MANHATTAN
CONSTRUCTION CO.**
Tulsa, Oklahoma

THREE RIVERS CORP.
Midland, Michigan

NAICS 237
HEAVY AND
CIVIL
ENGINEERING
CONTRACTORS



**BROWN & ROOT
INDUSTRIAL SERVICES LLC**
Baton Rouge, Louisiana



REF-CHEM LP
Houston



CIANBRO
Pittsfield, Maine



**S&B ENGINEERS AND
CONSTRUCTORS LTD.**
Houston

NAICS 238
SPECIALTY
CONTRACTORS



HTH COS. INC.
Union, Missouri



STARCON INTERNATIONAL INC.
La Porte, Texas



INTERSTATES INC.
Sioux Center, Iowa



TDINDUSTRIES INC.
Dallas



KWEST GROUP LLC
Perrysburg, Ohio



UNITED GROUP SERVICES INC.
Cincinnati

Excellence Winners

NAICS 236
GENERAL
CONTRACTORS



AUSTIN COMMERCIAL LP
Dallas



CSM GROUP
Kalamazoo, Michigan

GILBANE BUILDING CO.
Providence, Rhode Island

HOURIGAN
Richmond, Virginia



**LANDRY/FRENCH
CONSTRUCTION**
Scarborough, Maine

LPR CONSTRUCTION CO.
Loveland, Colorado

RUSH CONSTRUCTION INC.
Titusville, Florida

NAICS 238
SPECIALTY
CONTRACTORS



GAYLOR ELECTRIC INC.
Indianapolis

Merit Winners

NAICS 236
GENERAL
CONTRACTORS



**BLACK CONSTRUCTION
CORP.**
Barrigada, Guam



ROCHE CONSTRUCTORS INC.
Greeley, Colorado



ROY ANDERSON CORP.
Gulfport, Mississippi

NAICS 237
HEAVY AND
CIVIL
ENGINEERING
CONTRACTORS



AUSTIN INDUSTRIAL INC.
La Porte, Texas

**BARRIERE CONSTRUCTION
CO. LLC - A CRH CO.**
Metairie, Louisiana



SR TRIDENT INC.
Portland, Texas



W.T. BYLER CO.
Houston

NAICS 238
SPECIALTY
CONTRACTORS



CHERRY DEMOLITION
Houston



CMS CORP.
Maumee, Ohio



HELIX ELECTRIC
San Diego



SCOTT, MURPHY & DANIEL
Bowling Green, Kentucky



THE PIT LLC
Hagatna, Guam

THOMPSON ENGINEERING INC.
Mobile, Alabama

**Championing an Inclusive,
Diverse and Equitable Industry**

2021 NATIONAL INCLUSION, DIVERSITY AND EQUITY EXCELLENCE

Award Recipients

The ABC National Inclusion, Diversity
and Equity Excellence Awards recognize
members that display exemplary IDE
leadership in their workforce, supply chain
and community with best-in-class recruitment
policies, retention practices and education
and mentoring programs.

Presenting Sponsor



Panel of Judges

Velma Hart

Chief Operating Officer
Construction Specifications Institute
Alexandria, Virginia

Irma Wehmeyer

Senior Project Manager
hth cos. inc.
Union, Missouri

Stephen Taylor

Director of Policy and Assistant
General Counsel
The Surety & Fidelity Association
of America
Washington

Winners

Associate

Atkinson, Andelson, Loya, Ruud & Romo

Cerritos, California

General Contractor

**Hensel Phelps**

Greeley, Colorado

Subcontractor

**Helix Electric**

San Diego

Supplier

United Rentals Inc.

Stamford, Connecticut

2022
CONTRACTOR
OF THE YEAR



Presenting Sponsor



United Group Services Lives Its Core Values

United Group Services (UGS) is ABC's 2022 Contractor of the Year—a recognition of the company's demonstrated commitment to its three core values: quality, safety and service. UGS receives this honor 40 years to the month since being founded by Mark Mosley as a nonunion piping company outside Cincinnati in March 1982. To get started, Mosley used a loan from his father, who ran a union mechanical contractor that he eventually shut down to work for his son.

Today, Mosley has moved into the role of UGS chair, with Daniel Freese serving as CEO—and the company offers not just piping but a range of services for commercial and industrial clients across the United States, including rigging, fabrication, HVAC, engineering, maintenance and more. UGS has approached growth with a sense of entrepreneurship and innovation, adding divisions and acquiring companies, and now has 450 employees across four business units: United, which is the primary mechanical contractor; IMech, specializing in HVAC; Core Crew, a labor-management agency for UGS as well as external clients; and Elite Welding Academy, a for-profit welding school with three locations in two states that graduates about 250 students a year.

UGS is dedicated to the state of the art in construction. An ABC Top Performer as well as an ABC Accredited Quality Contractor, the company has been honored in ABC's Excellence in Construction® Awards and National Safety Excellence Awards programs and consistently achieves Diamond-level recognition from ABC's STEP Safety Management System. UGS is also among the first industrial mechanical contractors to be recognized under OSHA's Voluntary Protection Programs (VPP) health and safety initiative.

Throughout its four-decade history, UGS has also devoted itself to training and education, not just for its own craft professionals but for everyone—sharing knowledge, insights and best practices with the goal of elevating the entire industry. Members of UGS' executive team have served on the board of ABC's Ohio Valley Chapter as well as on various chapter and national committees, and Chief Values Officer Kevin Sell founded and chairs the ABC Users Summit. UGS is also actively involved in the Construction Users Roundtable and provides subject-matter experts to NCCER for curriculum revisions. And it's one of the first contractors in the country to implement a suicide awareness and prevention program for employees.

The fact that UGS has a chief values officer tells you everything you need to know about ABC's 2022 Contractor of the Year. Quality, safety and service aren't just something to talk about but ideals to put into action—one employee, one client and one community at a time.

INDEX OF ALL WINNERS

Adolfson & Peterson Construction	27	Keystruct Construction LLC	13
Atkinson, Andelson, Loya, Ruud & Romo	33	Kitchell	16, 26
Austin Commercial LP	31	KPost Roofing & Waterproofing	23
Austin Industrial Inc.	31	Kwest Group LLC	30
Barriere Construction Co. LLC - A CRH Co.	31	Landry/French Construction	31
Beard Construction Group LLC	15	Lott Brothers Construction Co.	13
Benchmark Construction Co. Inc.	24, 26	LPR Construction Co.	31
Black Construction Corp.	20, 31	M. Davis & Sons Inc.	23
Brasfield & Gorrie LLC	13, 20, 25	Manhattan Construction Co.	26, 30
Brindley Construction LLC	18, 26	Marek Brothers Systems LLC	6
Brite Electric	4	Messer Construction Co.	21
Broadmoor LLC	17	Methuen Construction Co. Inc.	26
Brown & Root Industrial Services LLC	30	MIELKE Mechanical Inc.	7
Cajun Industries LLC	9, 23	Miller & Long Co. Inc.	9
Camarata Masonry Systems Ltd.	6, 8	Moore Industries LLC	10, 23, 26
Capital Industries	7	MTech Mechanical	23
Chamberlin Roofing & Waterproofing	22	MW Builders	25
Chemex Global Inc.	23	Performance Contractors Inc.	15
Cherry Demolition	31	Pyramid Construction Services Inc.	26
Cianbro	30	Rabalais I & E Constructors	22
CMS Corp.	12, 31	Ref-Chem LP	25, 30
CSM Group	19, 31	RES Contractors LLC	25
David Allen Company Inc.	6, 22	Robins & Morton	14, 18
Erhardt Construction	24	Roche Constructors Inc.	17, 25, 31
EXCEL Group	16	Rogers-O'Brien Construction Co. LLC	27
Flintco LLC	24	Roy Anderson Corp.	31
Forrester Construction Co.	11, 17	RUSH Construction Inc.	31
Foulger-Pratt Contracting LLC	24	S&B Engineers and Constructors Ltd.	30
Garney Cos. Inc.	19	Scott, Murphy & Daniel	31
Gaylor Electric Inc.	31	SDV Construction Inc	30
Gibbs Construction	24	ShayCore	21
Gilbane Building Co.	12, 31	Shingobee Builders Inc.	11
Graycor Southern Inc.	30	Skiles Group	19
Greenhut Construction Co.	24	SpawGlass	25
Greystone Construction	11	SR Trident Inc.	31
Griesenbeck Architectural Products Inc.	9	Starcon International Inc.	30
GROUP Contractors LLC	25	Stellar Group Inc.	30
Haley-Greer Inc.	5	Stronghold Engineering Inc.	22
Harvey-Cleary Builders	12	Synergy Construction Inc.	27
Haskell	30	T.W. Frierson Contractor Inc.	16
Helix Electric	22, 31, 33	TDIndustries Inc.	8, 23, 30
Hensel Phelps	18, 26, 33	The PIT LLC	31
Holes Inc.	8	Thompson Engineering Inc.	31
Holtz Builders Inc.	27	Three Rivers Corp.	24, 30
Hometown Plumbing & Heating	7	Triad Electric & Controls	5, 22
Hourigan	31	United Group Services Inc.	30, 34
hth cos. inc.	30	United Rentals Inc.	33
iiCON Construction Colorado LLC	24	W.T. Byler Co.	31
Impetus, A Palmisano Co.	14	WCS Construction LLC	20
Interstates Inc.	5, 30	Westgate LLC	4
ISC Constructors LLC	22	White Construction Co.	27
Jordan Foster Construction	14	Willmar Electric Service	4
Karsten Interior Services	22		

Thank You to Our Sponsors

National Safety Excellence Awards Presenting Sponsor



National Inclusion, Diversity and Equity Excellence Awards Presenting Sponsor



National Contractor of the Year Award Presenting Sponsor



Reception Sponsor





440 First Street NW, Suite 200
Washington, DC 20001
(202) 595-1505
abc.org