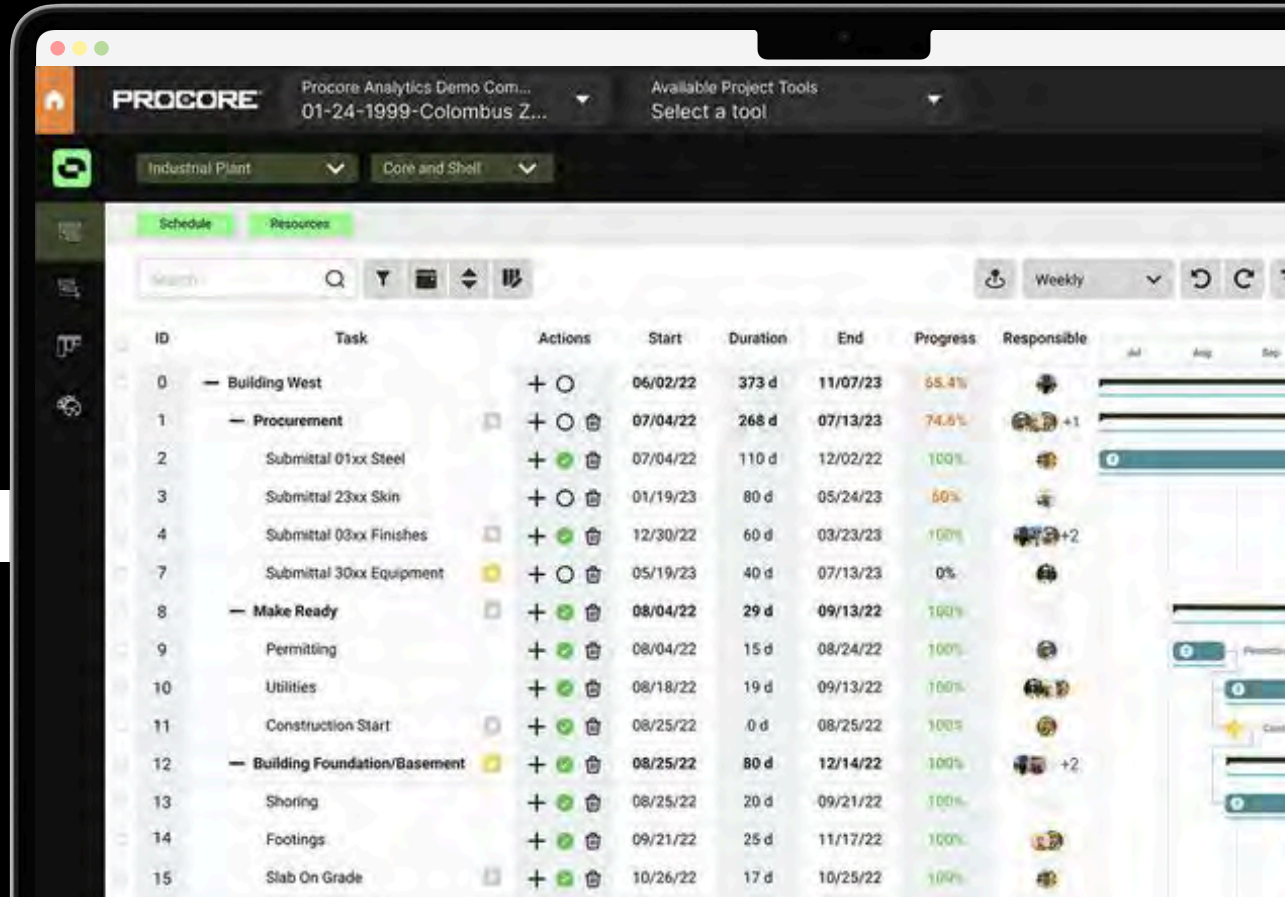


Connect your scheduling and planning with Procore



The screenshot displays the Procore Analytics Demo web application interface. The top navigation bar includes the Procore logo, a dropdown menu for the project name 'Procore Analytics Demo Com... 01-24-1999-Colombus Z...', and a section for 'Available Project Tools' with a 'Select a tool' dropdown. Below the navigation bar, there are filters for 'Industrial Plant' and 'Core and Shell'. The main content area is divided into 'Schedule' and 'Resources' tabs, with the 'Schedule' tab selected. A search bar and a set of icons (filter, view, sort, and print) are located above the table. The table itself has columns for ID, Task, Actions, Start, Duration, End, Progress, and Responsible. The data is organized into a hierarchical tree structure with expandable tasks. The 'Building West' task is expanded, showing sub-tasks like 'Procurement', 'Make Ready', and 'Building Foundation/Basement'. The 'Procurement' task is further expanded, showing sub-tasks like 'Submittal 01xx Steel', 'Submittal 23xx Skin', 'Submittal 03xx Finishes', and 'Submittal 30xx Equipment'. The 'Make Ready' task is also expanded, showing sub-tasks like 'Permitting', 'Utilities', and 'Construction Start'. The 'Building Foundation/Basement' task is expanded, showing sub-tasks like 'Shoring', 'Footings', and 'Slab On Grade'. The table shows the start and end dates, duration, and progress percentage for each task. The 'Responsible' column shows the assigned user or team. On the right side of the table, there are additional controls for each task, including a 'Add' button, a 'Assign' button, and a 'Delete' button. The 'Add' button is highlighted in blue. The 'Assign' button is highlighted in green. The 'Delete' button is highlighted in red. The table is displayed in a 'Weekly' view, as indicated by the 'Weekly' dropdown in the top right corner. The table is also displayed in a 'Gantt' view, as indicated by the 'Gantt' dropdown in the top right corner. The table is also displayed in a 'Resource' view, as indicated by the 'Resource' dropdown in the top right corner. The table is also displayed in a 'Calendar' view, as indicated by the 'Calendar' dropdown in the top right corner. The table is also displayed in a 'Dashboard' view, as indicated by the 'Dashboard' dropdown in the top right corner. The table is also displayed in a 'Reports' view, as indicated by the 'Reports' dropdown in the top right corner. The table is also displayed in a 'Settings' view, as indicated by the 'Settings' dropdown in the top right corner. The table is also displayed in a 'Help' view, as indicated by the 'Help' dropdown in the top right corner. The table is also displayed in a 'About' view, as indicated by the 'About' dropdown in the top right corner. The table is also displayed in a 'Contact Us' view, as indicated by the 'Contact Us' dropdown in the top right corner. The table is also displayed in a 'Privacy Policy' view, as indicated by the 'Privacy Policy' dropdown in the top right corner. The table is also displayed in a 'Terms of Service' view, as indicated by the 'Terms of Service' dropdown in the top right corner. The table is also displayed in a 'FAQ' view, as indicated by the 'FAQ' dropdown in the top right corner. The table is also displayed in a 'Feedback' view, as indicated by the 'Feedback' dropdown in the top right corner. The table is also displayed in a 'Support' view, as indicated by the 'Support' dropdown in the top right corner. The table is also displayed in a 'Partners' view, as indicated by the 'Partners' dropdown in the top right corner. The table is also displayed in a 'Solutions' view, as indicated by the 'Solutions' dropdown in the top right corner. The table is also displayed in a 'Products' view, as indicated by the 'Products' dropdown in the top right corner. The table is also displayed in a 'Services' view, as indicated by the 'Services' dropdown in the top right corner. The table is also displayed in a 'Contact Us' view, as indicated by the 'Contact Us' dropdown in the top right corner. The table is also displayed in a 'Privacy Policy' view, as indicated by the 'Privacy Policy' dropdown in the top right corner. The table is also displayed in a 'Terms of Service' view, as indicated by the 'Terms of Service' dropdown in the top right corner. The table is also displayed in a 'FAQ' view, as indicated by the 'FAQ' dropdown in the top right corner. The table is also displayed in a 'Feedback' view, as indicated by the 'Feedback' dropdown in the top right corner. The table is also displayed in a 'Support' view, as indicated by the 'Support' dropdown in the top right corner. The table is also displayed in a 'Partners' view, as indicated by the 'Partners' dropdown in the top right corner. The table is also displayed in a 'Solutions' view, as indicated by the 'Solutions' dropdown in the top right corner. The table is also displayed in a 'Products' view, as indicated by the 'Products' dropdown in the top right corner. The table is also displayed in a 'Services' view, as indicated by the 'Services' dropdown in the top right corner.

ID	Task	Actions	Start	Duration	End	Progress	Responsible
0	Building West	+ ○	06/02/22	373 d	11/07/23	65.4%	
1	Procurement	+ ○	07/04/22	268 d	07/13/23	74.6%	+1
2	Submittal 01xx Steel	+ ○	07/04/22	110 d	12/02/22	100%	
3	Submittal 23xx Skin	+ ○	01/19/23	80 d	05/24/23	60%	
4	Submittal 03xx Finishes	+ ○	12/30/22	60 d	03/23/23	100%	+2
7	Submittal 30xx Equipment	+ ○	05/19/23	40 d	07/13/23	0%	
8	Make Ready	+ ○	08/04/22	29 d	09/13/22	100%	
9	Permitting	+ ○	08/04/22	15 d	08/24/22	100%	
10	Utilities	+ ○	08/18/22	19 d	09/13/22	100%	
11	Construction Start	+ ○	08/25/22	0 d	08/25/22	100%	
12	Building Foundation/Basement	+ ○	08/25/22	80 d	12/14/22	100%	+2
13	Shoring	+ ○	08/25/22	20 d	09/21/22	100%	
14	Footings	+ ○	09/21/22	25 d	11/17/22	100%	
15	Slab On Grade	+ ○	10/26/22	17 d	10/25/22	100%	

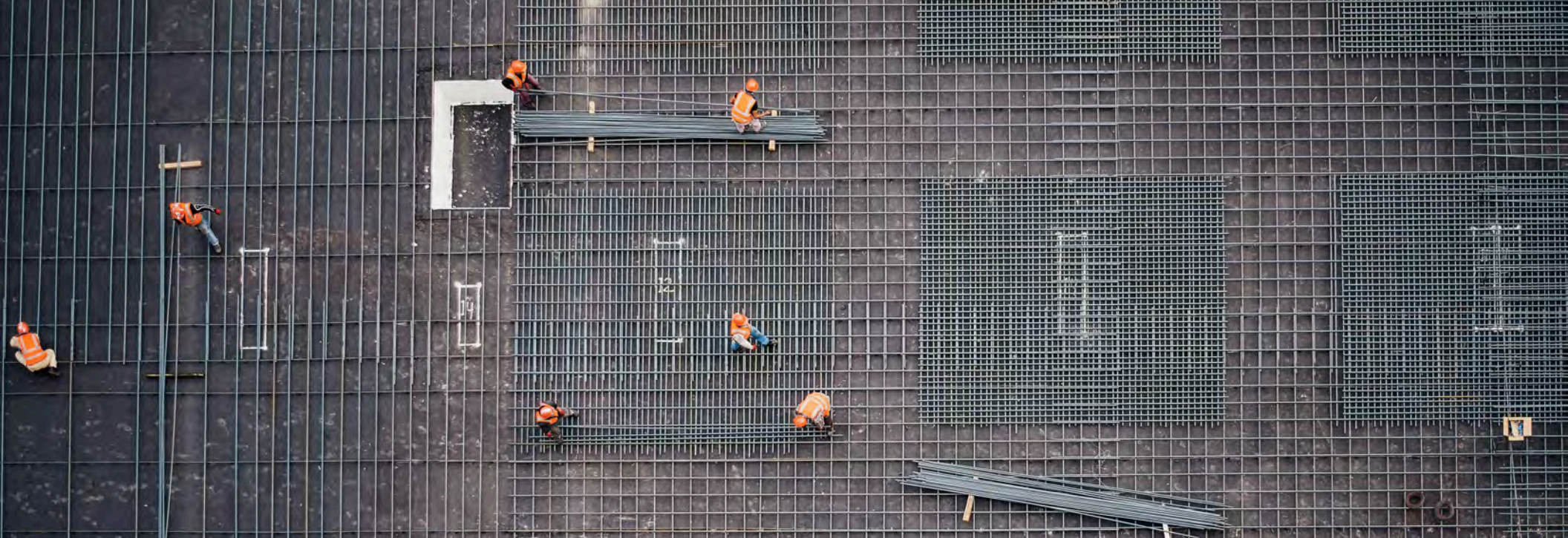


TABLE OF CONTENTS

01

Scheduling in Procore

Provide stakeholder visibility into the current schedule with Procore's native functionality.

02

Outbuild + Procore

Reduce delays and stay on track with a modern Schedule, integrated with the Lookahead, Submittals, and RFIs.

03

Getting started

Take the next step to improve and integrate your scheduling and planning process.

Visibility for stakeholders.

Procore excels at providing stakeholders with visibility into a project's current documentation and status. That's why Procore is often treated as the primary system of record for project information. Without a doubt, projects using Procore must have the most accurate, up-to-date schedule shown in Procore so that everyone is on the same page and there is no room for misunderstandings.

That's why Procore's main scheduling function is to show and share the schedule. With Procore, you can upload schedule files from the external scheduling software where they are created and edited, such as Microsoft Project. However, schedule creation and updates all happen outside of Procore, in these legacy softwares. So while Procore provides great visibility and distribution, teams are still left dealing with cumbersome scheduling tools that slow them down and are disconnected from the field planning process.



View the current project schedule in the same system of record as other key project information.



Provide broad stakeholder visibility into the current master schedule.

The screenshot shows the Procore Analytics Demo interface. The top navigation bar includes the Procore logo, project name '01-24-1999-Colombus Z...', and a dropdown for 'Available Project Tools'. Below this, there are tabs for 'Industrial Plant' and 'Core and Shell'. The main content area displays a 'Schedule' view with a table of tasks and their progress.

ID	Task	Actions	Start	Duration	End	Progress
0	Building West	+ ○	06/02/22	373 d	11/07/23	55.4%
1	Procurement	+ ○	07/04/22	268 d	07/13/23	74.5%
2	Submittal 01xx Steel	+ ○	07/04/22	110 d	12/02/22	100%
3	Submittal 23xx Skin	+ ○	01/19/23	80 d	05/24/23	50%
4	Submittal 03xx Finishes	+ ○	12/30/22	60 d	03/23/23	100%
7	Submittal 30xx Equipment	+ ○	05/19/23	40 d	07/13/23	0%
8	Make Ready	+ ○	08/04/22	29 d	09/13/22	100%
9	Permitting	+ ○	08/04/22	15 d	08/24/22	100%
10	Utilities	+ ○	08/18/22	19 d	09/13/22	100%
11	Construction Start	+ ○	08/25/22	0 d	08/25/22	100%
12	Building Foundation/Basement	+ ○	08/25/22	80 d	12/14/22	100%
13	Shoring	+ ○	08/25/22	20 d	09/21/22	100%
14	Footings	+ ○	09/21/22	25 d	11/17/22	100%
15	Slab On Grade	+ ○	10/26/22	17 d	10/25/22	100%
16	Foundation Walls	+ ○	11/17/22	20 d	12/14/22	100%
17	Core and Shell	+ ○	12/05/22	110 d	08/05/23	82%
18	Steel Structure	+ ○	12/05/22	30 d	01/16/23	100%
19	Decking	+ ○	01/17/23	23 d	02/16/23	90%
20	Bracking	+ ○	02/17/23	10 d	03/03/23	91%

Connect planning and updates to your Schedule.

Outbuild is a modern construction scheduling solution that not only makes it faster and easier to create schedules, but also integrates the schedule with field planning and project management to reduce delays, save time, and foster collaboration.

Outbuild's two-way integration with Procore keeps the schedule updated in Procore, provides instant visibility into project risks from RFIs and submittals, and helps you manage Submittals against the schedule.

KEY BENEFITS



Update the schedule 2x faster with Outbuild's streamlined scheduling tool, and share it with stakeholders via Procore.



Embed Outbuild into the Procore experience so you never have to leave Procore.



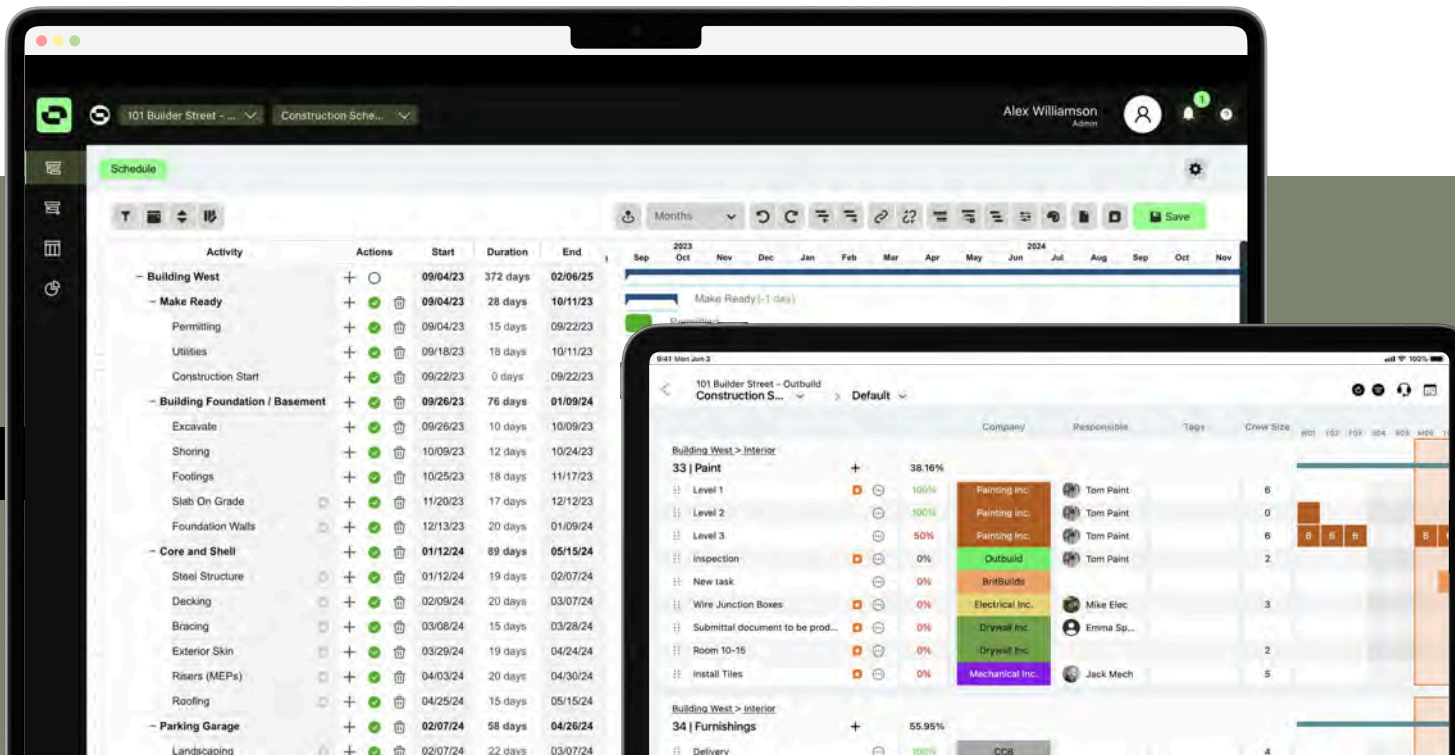
Outbuild's connected Lookahead improves field planning and reduces the burden of field to office communication.



View potential schedule risks from Procore RFIs and Submittals directly on the Schedule or Lookahead.



Automatically calculate Submit-by Dates in Outbuild and pull a dynamic procurement planning report in Procore.



Faster schedule creation.

Build project schedules in half the time and make the whole process far easier so the schedule is always kept up-to-date.

Outbuild's modern interface is purpose-built for construction. Sequence activities with a single click, drag and drop to create dependencies, and then push the final product over to Procore to share it with stakeholders.

And with project and directory syncing, it's easy to keep Procore and Outbuild aligned.

KEY BENEFITS



Eliminates unnecessary, cumbersome features so scheduling is simple and easy.



Manually sync new or updated schedules over to Procore, to control when stakeholders receive a new version.

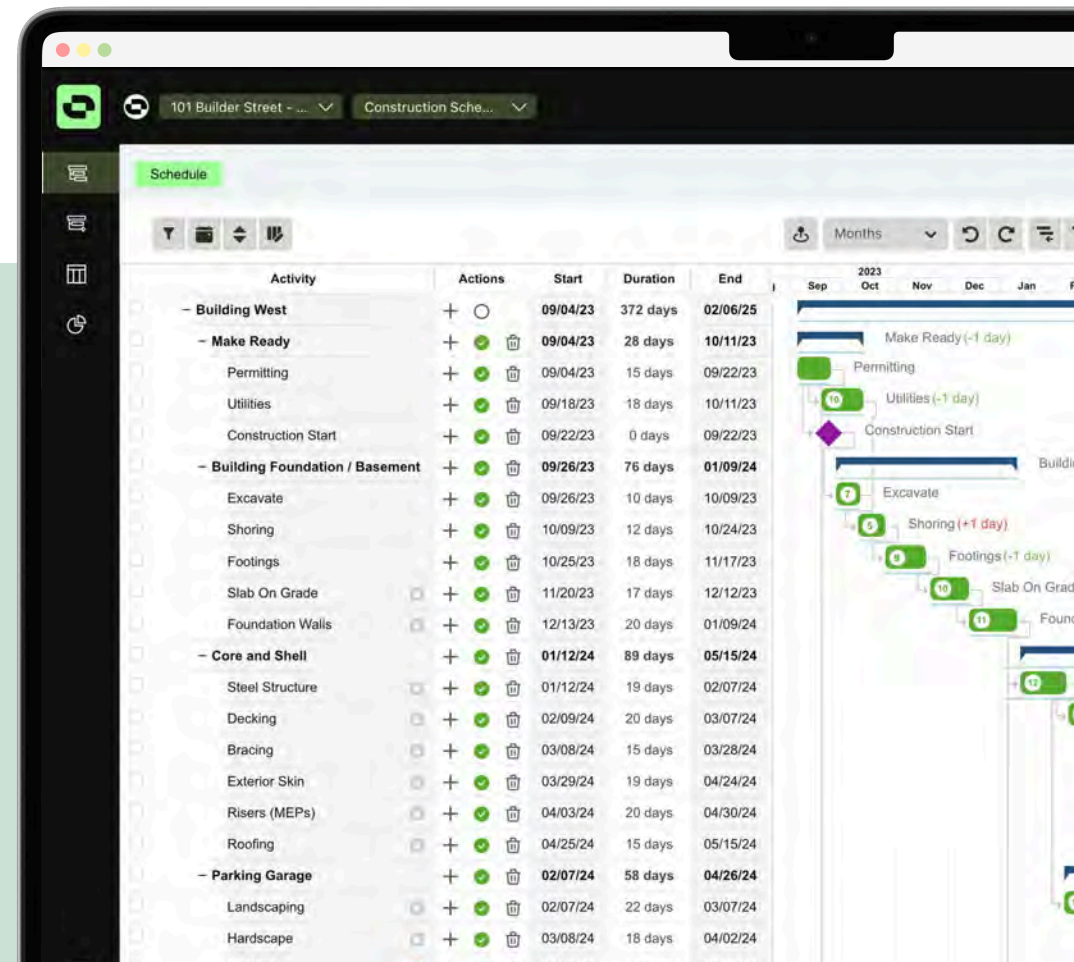


Automatically sync new Procore projects to Outbuild, and directly import companies and contacts from the Procore Directory.

“Using Outbuild for our construction projects has been a true gem. Its integration with Procore ensures our clients are always informed, and the real-time updates keep our team agile. The transparency and time savings are remarkable. Plus, the customer support is top-notch! For anyone in the construction game, this tool is easy to recommend!”

Zach Carlsen

PROGRAM MANAGER, BLOX CONSTRUCTION



Integrated Lookahead, designed for the field.

Keep the field and office in sync, and eliminate hours of prep work for meetings. Outbuild's connected Lookahead means the field is always aware of the current schedule as they build out their detailed plans, and PMs always have instant visibility into the field's plans, requests, and progress.

Outbuild's Lookahead is easy to use and can be managed on an iPad, to meet the field wherever they are.

KEY BENEFITS



Keep the field working off the current schedule when they build their plans.



Log field progress and identify potential issues while walking the site, and automatically share updates with PMs.



Work collaboratively with trade partners, and empower them to update their own progress on tasks and activities.

“Using Outbuild has completely transformed how we manage our construction projects. The seamless integration between our master and lookahead schedules has been a game changer. Plus, the real-time updates help us tackle potential roadblocks early on. As Procore users, the integration with submittal flow and RFIs has been invaluable. Highly recommend for improved project performance!”

Mark Clayton

PRESIDENT, PROSSER WILBERT CONSTRUCTION

9:41 Mon Jun 3

< Back VIVA Project Complex Main Structure

Task	Progress	Start	Duration	End	Company	Responsible	M 20	T 21	W 22	T 23
Cycle 1 Walls F1	43,75%	12/12/22	12 d	12/12/23						
Materials reception and oth...	20%	12/12/21	6 d	12/12/21	BK Demolitionz	+3	24	24	24	
↳ Install door frames	75%	18/12/21	2 d	18/12/21	Schneider Electric		10		10	
↳ Install rated temp walls	45%	30/12/21	3 d	30/12/21	Schneider Electric		5	5	5	5
Masonry	90%	12/01/22	1 d	12/01/22	COALSA				20	20
↳ Materials reception and...	10%	15/01/22	4 d	15/01/22	COALSA				24	
↳ Install door frames	75%	15/01/22	7 d	15/01/22	MDI Steel					
Materials receptio...	62,5%	17/01/22	3 d	17/01/22	Roofing Inc.					12
Masonry	90%	18/12/21	1 d	18/12/21	Roofing Inc.					24
Install rated ...	10%	30/12/21	4 d	30/12/21	MDI Steel	+2				
↳ Install do...	75,25%	12/01/22	12 d	12/01/22	MDI Steel					
Cycle 2 Walls F1	72,65%	12/12/22	45 d	12/12/23						
Install rated temp walls	10%	12/12/21	3 d	12/12/21	BK Demolition					
↳ Install door frames	75%	18/12/21	1 d	18/12/21	COALSA					
↳ Install rated temp walls	62%	30/12/21	42 d	30/12/21	COALSA	+1				
Install door frames	99,99%	12/01/22	7 d	12/01/22	MDI Steel					
Cycle 3 Walls F2	20,45%	12/12/22	12 d	12/12/23						
Materials reception and oth...	20%	12/12/21	6 d	12/12/21	BK Demolition					

RFIs and Submittals connected with the Schedule.

Easily identify potential impacts to the project schedule.

Submittals created in Procore are linked to Outbuild, where their status is viewed right on the master schedule. Outbuild even calculates the required Submit-By dates, and uses it to highlight at-risk submittals.

RFIs created in Procore are also linked to Outbuild, where they are logged as potential schedule Roadblocks so the project team can keep an eye on them.

KEY BENEFITS



Quickly and easily identify schedule risks due to late Submittals or RFI impacts.



Automatically calculate the required Submit-By dates needed to achieve the schedule, and build a dynamic procurement log in Procore.

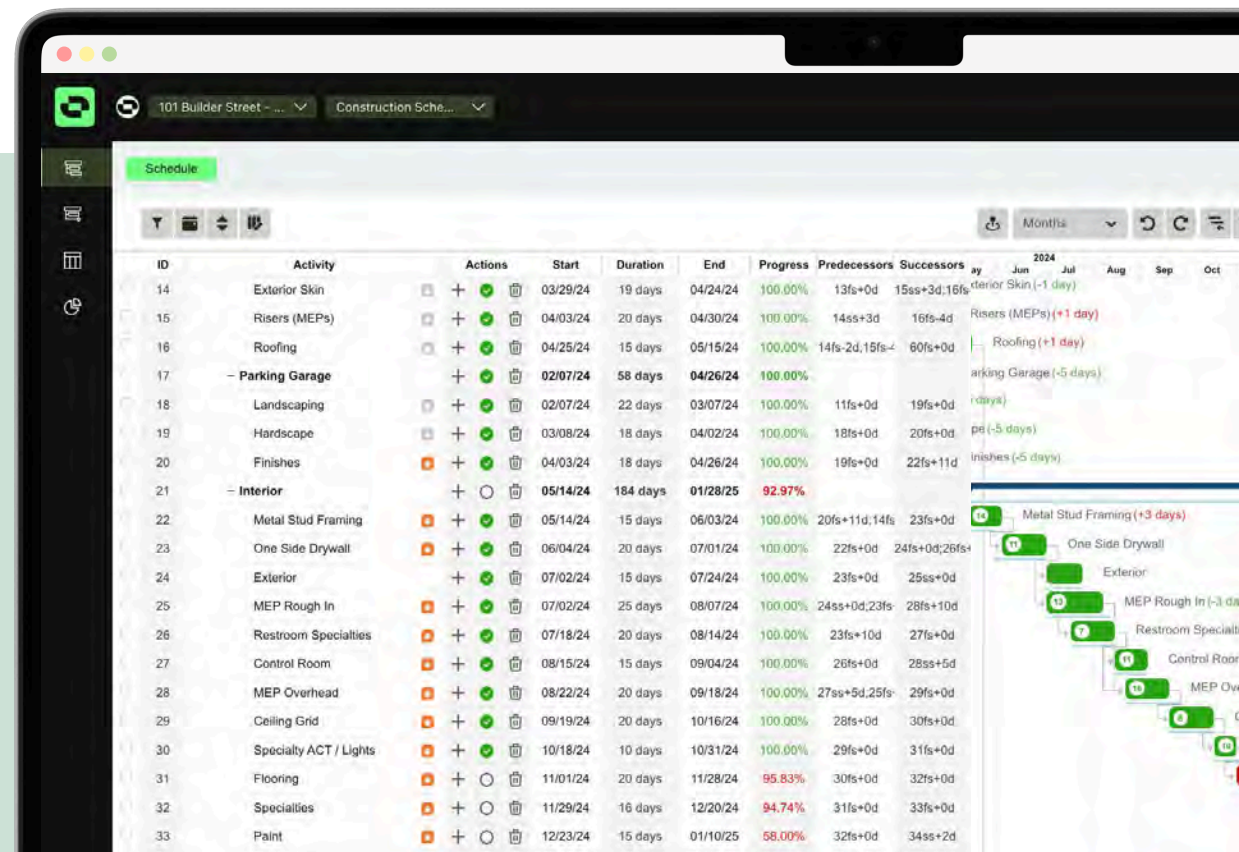


Make it easy to keep track of RFIs that need to be closed in order to stay on schedule.

“The greatest part of Outbuild that I have seen so far have been the integration with Procore, which is so much better than the old way of uploading a schedule. Integrating with Procore ties in Submittals, RFIs, tasks, that help keep things on track in a centralized location.”

Henry Orth

PROJECT MANAGER, MARKLEY GROUP





GETTING STARTED

Ready to integrate your scheduling, planning, and PM?

Outbuild's two-way integration with Procore is available today, and it's easy to get up and running. The Outbuild team can answer any questions and walk you through the process, so you can take advantage of all that connected scheduling and planning has to offer.

[Book a demo](#)

