

29<sup>th</sup>  
Annual

National  
Excellence in  
Construction®  
Awards

**TOP CONSTRUCTION TEAMS  
EXEMPLARY SAFETY PROGRAMS  
CHAMPIONS OF DIVERSITY**



---

**CONVENTION**

---

MARCH 24-28

---

2019



# National Excellence in Construction Awards

PANEL OF JUDGES / 3

## Eagle Winners

SPECIALTY CONTRACTORS / 4

GENERAL CONTRACTORS/CONSTRUCTION MANAGEMENT / 9

## Pyramid Winners

SPECIALTY CONTRACTORS / 20

GENERAL CONTRACTORS/CONSTRUCTION MANAGEMENT / 21

# National Safety Excellence Awards

PANEL OF JUDGES / 25

## Pinnacle Winners

GENERAL CONTRACTOR / 26

HEAVY AND CIVIL ENGINEERING CONTRACTOR / 26

SPECIALTY CONTRACTOR / 26

## Excellence Winners

GENERAL CONTRACTOR / 26

HEAVY AND CIVIL ENGINEERING CONTRACTOR / 27

SPECIALTY CONTRACTOR / 27

## Merit Winners

GENERAL CONTRACTOR / 27

HEAVY AND CIVIL ENGINEERING CONTRACTOR / 27

SPECIALTY CONTRACTOR / 27

# National Diversity Excellence Awards

PANEL OF JUDGES / 29

## Diversity Winners

ASSOCIATE / 29

GENERAL CONTRACTOR OVER \$33 MILLION / 29

GENERAL CONTRACTOR UNDER \$33 MILLION / 29

SUBCONTRACTOR / 29

SUPPLIER / 29

# National Contractor of the Year Award

**National Contractor of the Year** / 30

2018 STEP DIAMOND RECIPIENTS / 31

INDEX OF ALL WINNERS / 32

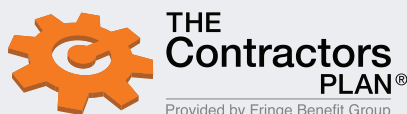
PROGRAM SPONSORS / 33



## Accredited Quality Contractor

is a credential for ABC chapter members\* that have documented their commitment to five key areas of corporate responsibility: quality, safety, talent management, education and community relations.

Presented by



\*Chapter Specific

# Built on Excellence

## **2018 EXCELLENCE IN CONSTRUCTION AWARD RECIPIENTS**

The Excellence in Construction Awards honor the skill and creativity of the entire team—contractor, owner, architect and engineer—responsible for an outstanding merit shop construction project. The 2018 award recipients exceeded expectations in innovation and quality.

---

Presenting Sponsor





# Panel of Judges

**JOANNE ARNOLD**

*Director of Research & TOBY*  
Building Owners and Managers Association International  
Washington

**MICHAEL R. BEGLINGER**

*Senior Supervisor, Construction Management,  
Construction Division*  
Smithsonian Facilities  
Washington

**MICHAEL H. CASTEN**

*Founder & Principal*  
Construction Concepts  
North Myrtle Beach, South Carolina

**MARK GEDRIS**

*Vice President of Member Engagement*  
Construction Management Association of America  
McLean, Virginia

**PROF. PATRICK L. GLON, EMERITUS,  
PURDUE UNIVERSITY**

*P.L. Glon Consulting, PC, Retired*  
Sturgis, Michigan

**KATIE LEONARD**

*Vice President*  
BDR Partners  
Atlanta

**JJ MCCARTHY, LEED AP, AIC**

*Vice President – PreConstruction & Estimating*  
AECOM Construction Inc.  
Arlington, Virginia

**DAVE MIELKE**

*President*  
MIELKE Holdings LLC  
Tampa, Florida

**JOE M. POWELL**

*Chairman*  
University Research Institute  
Washington

**DAVE SPENCER**

*President*  
S. David & Co. LLC  
Jacksonville, Florida

**BRIAN STAMPER**

*Managing Partner*  
Advantic LLC  
Dayton, Ohio

**RICHARD THOMAS, PLC**

*Director, State/Local Legislative Affairs*  
Design-Build Institute of America  
Washington

**ANDRE W. THORNTON**

*Founder & CEO*  
Whitman Consulting  
Germantown, Maryland

**ANDREW WRIGHT**

*Deputy Editor*  
Engineering News-Record  
New York

# Eagle Winners

Specialty Contractors

## COMMUNITY/PUBLIC SERVICE

### ENVIROVANTAGE

- Wood Island Life Saving Station  
Kittery Point, Maine
- Town Of Kittery, Maine & Wood Island Life Saving  
Station Association
- Rykerson Architecture
- Structural Integrity Engineers
- Chesterfield Associates

C  
N  
L  
CO  
A  
E  
GC



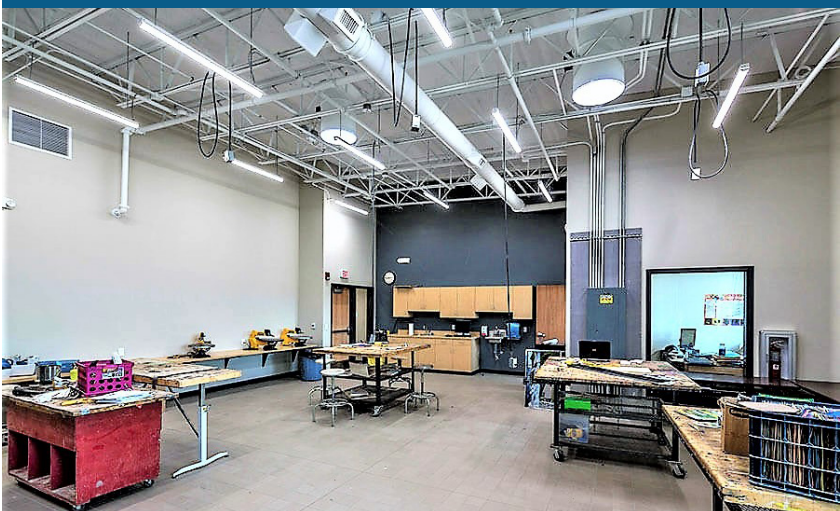
Careful abatement by EnviroVantage kicked off the long-term historical restoration of the abandoned Wood Island Life Saving Station in Kittery, Maine—helping undo 50 years of neglect in just 52 days.

## ELECTRICAL: COMMERCIAL LESS THAN \$2 MILLION

### BERGSTROM ELECTRIC INC.

- Four Winds Alternative & CTE High School  
Fort Totten, North Dakota
- Fort Totten School District #30
- DSGW Architects
- ONE - Obermiller-Nelson Engineering
- Shingobee Builders

C  
N  
L  
CO  
A  
E  
GC



Four Winds Alternative & CTE High School in North Dakota, which features 264 rooftop solar panels and a geothermal heating/cooling system, is the first net zero building constructed on tribal land in the United States.

## ELECTRICAL: COMMERCIAL \$2 TO \$10 MILLION

### GAYLOR ELECTRIC INC.

- The Scott Hamilton Center for Proton Therapy  
Franklin, Tennessee
- Provision Healthcare LLC
- Michael Brady Inc.
- Michael Brady Inc.

C  
N  
L  
CO  
A  
E



The Scott Hamilton Center for Proton Therapy was a complex electrical build from beginning to end. Through virtual design, innovative fabrication and trade collaboration, Gaylor Electric was able to deliver a high-quality specialty cancer care facility.





# Eagle Winners

Specialty Contractors



**ELECTRICAL: INDUSTRIAL  
LESS THAN \$2 MILLION**

- C** **ISC CONSTRUCTORS LLC**
- N** UOP Honeywell DSG Upgrade & Lab Feeder Replacement Project
- L** Baton Rouge, Louisiana
- CO** Honeywell UOP



ISC Constructors re-established and upgraded plant operations with zero recordable incidents after Honeywell UOP experienced a critical power failure on a 15 kilovolt main feeder that crippled operations for the entire facility.



**ELECTRICAL: INDUSTRIAL  
\$2 TO \$10 MILLION**

- C** **MMR CONSTRUCTORS INC.**
- N** Shell - Olefins Flare Gas Recovery Project
- L** Deer Park, Texas
- CO** Shell Deer Park
- E** CDI Engineering



MMR Constructors executed electrical and instrumentation work on Shell Deer Park's olefins flare gas recovery project, finishing on time, under budget and with zero safety incidents amidst Hurricane Harvey hitting during the 20-month job.



**ELECTRICAL - ALL PROJECTS  
OVER \$10 MILLION**

- C** **TRIAD ELECTRIC & CONTROLS**
- N** Dow Poly B, Train 3 Project
- L** Plaquemine, Louisiana
- CO** The Dow Chemical Co.
- A** The Dow Chemical Co.
- E** The Dow Chemical Co.
- GC** The Dow Chemical Co.



Triad Electric and Controls overcame challenges and a 40 percent increase in scope to complete more than 800,000 work hours without any safety incidents at Dow Chemical's Gulfstream Poly B, Train 3 plastics plant.



# Eagle Winners

Specialty Contractors

**EXTERIORS: ALL OTHER  
EXTERIOR FINISHES**

## CHAMBERLIN ROOFING & WATERPROOFING

Querencia Balcony Repairs  
Austin, Texas  
Seniority Inc.  
French Engineering LLC



While installing nearly 190,000 square feet of waterproofing products on a luxurious senior living community in the span of 20 months, Chamberlin Roofing & Waterproofing overcame terrain obstacles, design changes, resident accommodations and time constraints.

**EXTERIORS: MASONRY,  
PRECAST OR STONE**

## TELLIGENT MASONRY LLC

The Signature at Reston Town Center  
Reston, Virginia  
Boston Properties  
Shalom Baranes Associates Architects  
Thornton Tomasetti  
HITT Contracting Inc.



Telligent Masonry safely installed approximately one million oversize bricks on The Signature ahead of schedule, requiring several different crews and multiple scaffold systems. Substantial completion of the skin on the 23-story luxury apartment building's two towers was done in just six months.

**INTERIORS: ACOUSTICAL,  
DRYWALL, MILLWORK OR PLASTER**

## GMI

Market Square Tower  
Houston  
Woodbranch Management Inc.  
Jackson & Ryan Architects  
Walter P Moore  
D.E. Harvey Builders Inc.

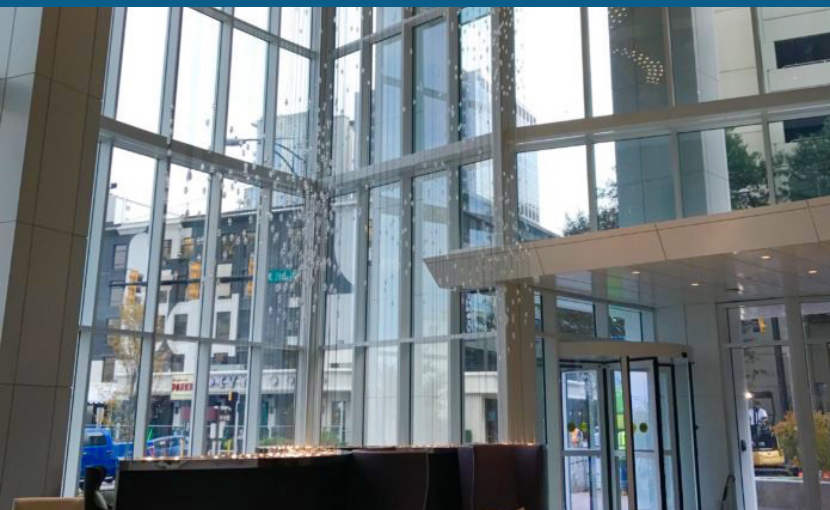


Greater Metroplex Interiors logged 185,892 work hours to help complete downtown Houston's tallest multifamily residential building—measuring 41 stories, 745,000 square feet and 463 units—with heavy rainfall from Hurricane Harvey throughout the project.



# Eagle Winners

Specialty Contractors



David Allen Company drew on its 100 years of experience to install nearly 80,000 square feet of tile and natural stone at the one-of-a-kind, 217-room Kimpton Tryon Park Hotel in the heart of uptown Charlotte, North Carolina.

## INTERIORS: ALL OTHER INTERIOR FINISHES

### **DAVID ALLEN COMPANY INC.**

- C** Kimpton Tryon Park Hotel
- N** Charlotte, North Carolina
- L** Kimpton Hotel & Restaurant Group
- CO** Cooper Carry Inc.
- A** Balfour Beatty



A complex structural design, aesthetic requirements and 30-plus days of rain required innovative solutions and experience working with a highly integrated team for TDIndustries to remain on budget and on time while providing MEP systems for the THR Recovery/Wellness Center in Texas.

## MECHANICAL: COMMERCIAL LESS THAN \$10 MILLION

### **TDINDUSTRIES INC.**

- C** Texas Health Resources Recovery and Wellness Center
- N** Mansfield, Texas
- L** Texas Health Resources
- CO** Beck Architecture
- A** TDIndustries Inc.
- E** The Beck Group



**PRODUCTIVITY AWARD  
WINNER**

**DESIGN-BUILD  
AWARD WINNER**



M & D Mechanical Contractors installed two high-capacity blowers and the stainless steel piping necessary to transport air below the Neely Henry Dam, effectively raising the dissolved oxygen content in the water to support aquatic life.

## MECHANICAL: INDUSTRIAL LESS THAN \$10 MILLION

### **M & D MECHANICAL CONTRACTORS INC.**

- C** Neely Henry Dam Dissolved Oxygen Enhancement
- N** Ohatchee, Alabama
- L** Southern Company Services Inc.
- CO** HDR Inc.
- A** HDR Inc.
- E** Brasfield & Gorrie LLC



# Eagle Winners

## Specialty Contractors

### MECHANICAL - ALL PROJECTS OVER \$10 MILLION

#### RK MECHANICAL INC. **C**

C. Wayne McIlwraith Translational Medical Institute at  
Colorado State University **N**  
Fort Collins, Colorado **L**  
Tetrad Property Group **CO**  
The Clark Enerson Partners **A**  
The Clark Enerson Partners **E**  
JE Dunn Construction Group Inc. **GC**



RK Mechanical designed, fabricated and installed mechanical and plumbing systems for a 48,000-square-foot, world-leading medical research facility on Colorado State University's veterinary campus, which intends to translate animal research into advancements for humans.

### OTHER SPECIALTY CONSTRUCTION: COMMERCIAL - LESS THAN \$10 MILLION

#### AGGREGATE TECHNOLOGIES INC. **C**

I-69 TX DOT Emergency Bridge Repair **N**  
Houston **L**  
Texas Department of Transportation **CO**



Aggregate Technologies safely removed the I-69 bridge over the San Jacinto River, which was badly damaged by Hurricane Harvey, in just 113 days and under budget.

### OTHER SPECIALTY CONSTRUCTION: COMMERCIAL - MORE THAN \$10 MILLION

#### FIORE & SONS INC. **C**

Saving the "Home of Wonder Bread" - The Flowers  
Bakery Renovation **N**  
Denver **L**  
Fiore Equities LLLP **CO**  
Wayne D. Anderson AIA LLC **A**  
Teeg Engineering Inc. **E**  
Fiore & Sons Inc. **GC**



Fiore & Sons saved the former Hostess Bakery building, a Denver landmark, from demolition and turned it into a new headquarters for the third-generation heavy civil construction company with space for additional tenants.



# Eagle Winners

Specialty Contractors



With more than 600 pieces of equipment being shipped from all over the world, Turner Industries Group's specialized transportation division was called into action to receive and transport seven pressure vessels to the Shell Tiger A04 construction jobsite in Geismar, Louisiana.

## OTHER SPECIALTY CONSTRUCTION: INDUSTRIAL - LESS THAN \$10 MILLION

- C** **TURNER INDUSTRIES GROUP LLC**
- N** Tiger A04 - Heavy Transport
- L** Geismar, Louisiana
- CO** Shell Chemical LP



Despite Hurricane Harvey and devastating floods, Standard Constructors performed a pump station upgrade for Dow Chemical Company in the heart of Lake Jackson without any quality deviations or injuries.

## OTHER SPECIALTY CONSTRUCTION: INDUSTRIAL - MORE THAN \$10 MILLION

- C** **STANDARD CONSTRUCTORS INC.**
- N** DOW Lake Jackson Pump Station
- L** Lake Jackson, Texas
- CO** The DOW Chemical Co.
- A** The DOW Chemical Co.
- E** CH2MHILL
- GC** The DOW Chemical Co.



Brasfield & Gorrie self-performed 61 percent of the work on Kiwanis Centennial Park, which has revitalized the area surrounding Birmingham's iconic Vulcan statue.

## SITework/LANDSCAPE/HARDSCAPE

- C** **BRASFIELD & GORRIE LLC**
- N** Kiwanis Centennial Park
- L** Birmingham, Alabama
- CO** Kiwanis Club of Birmingham
- A** Nimrod Long and Associates
- E** Schoel Engineering





# Eagle Winners

General Contractors/  
Construction Management

COMMERCIAL - LESS THAN \$5 MILLION

## ROCHE CONSTRUCTORS INC.

Seafood City Marketplace  
Las Vegas

Fortune Marketplace Corp. dba Seafood City Supermarket  
Camburas & Theodore Ltd.  
Camburas & Theodore Ltd.



Roche Constructors oversaw the retrofit—plus interior and exterior demolition—of a two-story Sports Chalet with an in-ground swimming pool into a bustling Filipino supermarket requiring a specialized HVAC system and fish processing area.

COMMERCIAL - \$5 TO \$10 MILLION

## BL HARBERT INTERNATIONAL LLC

Dynetics Test Stand Facility  
Decatur, Alabama  
Dynetics Inc.  
BRPH



Despite extreme concrete and steel tolerances, record-breaking cold temperatures and working on elevated surfaces, BL Harbert International completed the first of three aerospace testing facilities for Dynetics on time, within budget and with zero incidents.

COMMERCIAL - \$10 TO \$25 MILLION

## LANDIS CONSTRUCTION CO. LLC

Cambria Hotel  
New Orleans  
FC Tchoup LLC  
Holly & Smith Architects APAC  
Morphy Makofsky Inc.

PRODUCTIVITY AWARD  
WINNER



On this ambitious infill job, Landis Construction squeezed the seven-story Cambria Hotel within the allowable 65-foot height limit—overcoming challenges related to rebuilding a crumbling wall, accessing the site above and within neighboring properties, and switching interior designers mid-project.



# Eagle Winners

General Contractors/  
Construction Management



Designed and constructed to last at least a century with a focus on efficient workspace and quality materials and construction techniques, LifeWay propelled itself forward as an innovative company providing employees with the spiritual and creative inspiration needed for their important work.

## COMMERCIAL - \$25 TO \$100 MILLION

- C** **SKANSKA USA BUILDING**
- N** LifeWay Christian Resources New Headquarters
- L** Nashville, Tennessee
- CO** LifeWay Christian Resources
- A** Gresham Smith and Partners
- E** I.C. Thomasson Associates



This inspiring project, provided gratis by Poole Anderson, evolved from a minor high school gym renovation into a full design-build job involving numerous stakeholders collaborating to turn a young man's vision of giving back to his community a reality.

## COMMUNITY/PUBLIC SERVICE

- C** **POOLE ANDERSON CONSTRUCTION LLC**
- N** Give a Child a Voice Fitness Center
- L** Millersburg, Pennsylvania
- CO** Millersburg Area High School
- A** Crabtree Rohrbaugh



Caddell Construction, in partnership with the U.S. Army Corps of Engineers, completed one of the military's most sophisticated combat training complexes 84 days ahead of schedule with outstanding safety and quality performance.

## FEDERAL GOVERNMENT/MILITARY \$10 TO \$100 MILLION

- C** **CADDELL CONSTRUCTION CO. (DE) LLC**
- N** Aerial Gunnery Range
- L** Fort Bragg, North Carolina
- CO** U.S. Army Corps of Engineers
- A** U.S. Army Corps of Engineers
- E** U.S. Army Corps of Engineers





# Eagle Winners

General Contractors/  
Construction Management

## HEALTH CARE - LESS THAN \$10 MILLION

### BENCHMARK CONSTRUCTION CO. INC.

WellSpan Ephrata Community Hospital Cardio Overbuild  
Ephrata, Pennsylvania  
WellSpan Ephrata Community Hospital  
Richard F. Mulá Architects  
Barton Associates

C  
N  
L  
CO  
A  
E



Benchmark Construction met all the challenges that came along with building a new cardiovascular lab directly above and around some of the most vital areas of WellSpan Ephrata Community Hospital, including the emergency and maternity departments.

## HEALTH CARE - \$10 TO \$25 MILLION

### BENCHMARK CONSTRUCTION CO. INC.

Carole and Ray Neag Medical Center  
Wernersville, Pennsylvania  
Caron Treatment Center  
Olsen Design Group Architects  
Consolidated Engineers

C  
N  
L  
CO  
A  
E



Benchmark Construction built the new Carole and Ray Neag Medical Center on a tight site on a steep incline in the heart of Caron Treatment Center's active campus.

## HEALTH CARE - \$25 TO \$100 MILLION

### BROADMOOR LLC

Ochsner Medical Center West Tower Expansion  
New Orleans  
Ochsner Clinic Foundation  
Rozas Ward Architects  
Schrenk Endom & Flanagan LLC

C  
N  
L  
CO  
A  
E



With a mission to maintain the patient experience, a promise to provide a safe construction site and a goal of minimizing impacts on the working hospital, Broadmoor accepted the challenge to construct a seven-story expansion of Ochsner Medical Center's West Tower.

PRODUCTIVITY AWARD  
WINNER





# Eagle Winners

General Contractors/  
Construction Management



DonahueFavret restored a 130-year-old New Orleans church to its original magnificence by using original construction techniques and materials while upgrading all behind-the-scenes MEP systems to the latest technology.

## HISTORICAL RESTORATION/RENOVATION LESS THAN \$25 MILLION

### **C** DONAHUEFAVRET CONTRACTORS INC.

- N** St. Stephen Catholic Church Repair and Restoration
- L** New Orleans
- CO** Good Shepherd Roman Catholic Church
- A** Trapolin-Peer Architects
- E** IMC Consulting Engineers Inc.



Motivated by the mantra “this place matters,” crews brought Wyoming’s first education center back to life by carefully restoring historical elements on a complicated five-phase high school expansion during which 1,800 students remained on campus.

## HISTORICAL RESTORATION/RENOVATION \$25 TO \$100 MILLION

### **C** AP WYOMING

- N** Natrona County High School Historic Renovations
- L** Casper, Wyoming
- CO** Natrona County School District No. 1
- A** Bassetti Architects
- E** PCS Structural Solutions



## INDUSTRIAL - LESS THAN \$5 MILLION

### **C** CAJUN INDUSTRIES LLC

- N** HE-201D Replacement Project
- L** Plaquemine, Louisiana
- CO** Olin Blue Cube Operations LLC
- E** Ford, Bacon & Davis



To increase operating capacity and overall efficiency at the Olin Blue Cube Operations facility, Cajun was charged with the demolition, removal and replacement of a 500,000-pound heat exchanger located within a highly congested unit.



# Eagle Winners

General Contractors/  
Construction Management

## INDUSTRIAL - \$5 TO \$15 MILLION

### BUILDING CRAFTS INC.

Seaboard Triumph Foods Pretreatment Facility  
Sioux City, Iowa  
Seaboard Triumph Foods  
Fox Engineering

C  
N  
L  
CO  
E



Building Crafts constructed a wastewater pre-treatment facility that generates energy from the biogas produced during the treatment process—reducing environmental impacts and providing Seaboard Triumph Foods with significant savings.

## INDUSTRIAL - \$15 TO \$25 MILLION

### THE WEITZ CO.

Poultry Feed Manufacturing Facility  
Joanna, South Carolina  
Cobb-Vantress Inc.  
RSP Architects Ltd.  
Weitz Professional Services LLC

C  
N  
L  
CO  
A  
E



Cobb Vantress Inc. contracted The Weitz Company to design-build a state-of-the-art poultry feed processing facility in Joanna, South Carolina, that has a manufacturing capacity of 2,000 tons per week for grain storage, grinding, mixing, pelleting and cooling.



## INDUSTRIAL - \$25 TO \$100 MILLION

### PCL INDUSTRIAL CONSTRUCTION CO.

OG&E Mustang Simple Cycle Project  
Oklahoma City  
Oklahoma Gas & Electric  
Burns and McDonnell

C  
N  
L  
CO  
E



PCL Industrial Construction built a facility with seven individual generating units that produce approximately 462 megawatts capable of transmitting electricity to the grid within 10 minutes, powering an estimated 400,000 homes in the Oklahoma City area.





# Eagle Winners

General Contractors/  
Construction Management



## INFRASTRUCTURE: HEAVY

### C BRASFIELD & GORRIE LLC

- N CSX Bayou Sara Swing Span Replacement
- L Mobile, Alabama
- CO CSX Transportation Inc.
- E HDR Inc.



Extreme coordination and planning were required for Brasfield & Gorrie to meet the accelerated schedule to replace a railroad swing span with a new 550,000-pound span, all performed over water and with a rail shutdown of only 14 hours.



## INSTITUTIONAL LESS THAN \$10 MILLION

### C SHINGOBBE BUILDERS INC.

- N Four Winds Alternative & Career Technology Education High School
- L Fort Totten, North Dakota
- CO Fort Totten Public School District #30
- A DSGW Architects
- E Obermiller Nelson Engineering

GREENER TOMORROW  
AWARD WINNER

Shingobee worked closely with the design team to deliver a 12,500-square-foot, net-zero high school that alleviates future operational costs for the district. It is the first net-zero school to be built on tribal land.



## INSTITUTIONAL - \$10 TO \$25 MILLION

### C ADOLFSON & PETERSON CONSTRUCTION

- N Estes Valley Community Recreation Center
- L Estes Park, Colorado
- CO Estes Valley Recreation and Park District
- A Ohlson Lavoie Collaborative
- E Martin/Martin (Structural)

Adolfson & Peterson stuck to an aggressive schedule to safely transform and significantly expand an outdated aquatic center into a recreation center that truly meets the community's needs, contending with mountain wildlife and unearthing natural springs due to the site's location 7,522 feet above sea level.



# Eagle Winners

General Contractors/  
Construction Management

## INSTITUTIONAL - \$25 TO \$100 MILLION

### AMERICAN CONSTRUCTORS

Austin Community College San Gabriel Campus  
Leander, Texas  
Austin Community College District  
Pfluger Architects in Association with SmithGroup  
Structures

C  
N  
L  
CO  
A  
E



As the first major component of Leander, Texas's transit-oriented development, Austin Community College's San Gabriel campus features a learning lab integrated with a library and tutoring areas, multipurpose rooms for community use, and open spaces for studying and gathering.

## MEGA-PROJECTS - ALL PROJECTS \$100 MILLION TO \$200 MILLION

### S & B ENGINEERS AND CONSTRUCTORS LTD.

Lone Star NGL Frac V  
Baytown, Texas  
Energy Transfer Partners: Lone Star NGL  
S & B Engineers and Constructors Ltd.

C  
N  
L  
CO  
E



S & B Engineers and Constructors expended more than 1.5 million work hours on the engineering, procurement and construction of a 120,000 barrels-per-day NGL fractionation unit—maintaining the project's budget and compressed schedule in the face of Hurricane Harvey.



## MEGA-PROJECTS - ALL PROJECTS OVER \$200 MILLION

### KBR

Koch Enid Expansion Project  
Enid, Oklahoma  
Koch Nitrogen Co./Koch Ag and Energy Solutions LLC  
KBR

C  
N  
L  
CO  
E



KBR provided EPC services for a three-year, \$1.3 billion expansion of Koch's fertilizer plant on a 650-acre site in Enid, Oklahoma—delivering six major scopes of work on time and on budget through a collaborative team approach.



# Eagle Winners

General Contractors/  
Construction Management



Serving as construction manager at risk, SpawGlass generated tremendous collaboration across the design and project teams on the 3-acre Confluence Park, which includes three pavilions of giant concrete petals, a rainwater harvesting system, landscaping that represents five Texas ecosystems and a sustainable education center.

## OTHER CONSTRUCTION LESS THAN \$10 MILLION

- C** **SPAWGLASS**
- N** Confluence Park
- L** San Antonio
- CO** San Antonio River Foundation
- A** Lake|Flato Architects; Rialto Studio Inc. (Landscape)
- E** Pape-Dawson Engineers Inc. (Civil) / Architectural Engineers Collaborative (Structural) / CNG Engineering PLLC (MEP) / Raba Kistner Consultants Inc. (Testing)



Doster Construction was honored to help bring the Equal Justice Initiative's vision for the National Memorial for Peace and Justice to life in downtown Montgomery, Alabama. The 20,000-square-foot, open-air memorial includes 1,610 corten steel monuments.

## OTHER CONSTRUCTION \$10 TO \$100 MILLION

- C** **DOSTER CONSTRUCTION CO.**
- N** The National Memorial for Peace and Justice
- L** Montgomery, Alabama
- CO** The Equal Justice Initiative
- A** MASS Design Group
- E** Carmichael Engineering Inc.



Representing the largest capital investment by a Chinese-based company in Tennessee's history, this 515,000-square-foot advanced manufacturing facility situated on 150 acres allows Wonder Porcelain to introduce proprietary processes not previously utilized in domestic tile production.

## PRE-ENGINEERED BUILDING

- C** **T.W. FRIERSON CONTRACTOR INC.**
- N** American Wonder Porcelain
- L** Lebanon, Tennessee
- CO** American Wonder Porcelain
- A** Design Innovation Architects Inc.
- E** Civil Site Design Group PLLC



# Eagle Winners

General Contractors/  
Construction Management

## PUBLIC WORKS/ENVIRONMENTAL

### CROWDER CONSTRUCTION CO. C

Sustainable Water Initiative for Tomorrow Phase 3 N  
Demonstration Facility L  
Suffolk, Virginia CO  
Hampton Roads Sanitation District E  
Hazen and Sawyer



Crowder Construction was the design-builder for a first-of-its-kind facility that recharges the Potomac Aquifer, safeguarding the quality of Virginia Beach's water supply while resolving multiple economic and environmental challenges. The project was delivered within an extremely tight schedule and without a single recordable safety incident.

## RENOVATION - LESS THAN \$5 MILLION

### LAKEWOOD CONSTRUCTION C

West Coast Chamber Robust Renovation N  
Holland, Michigan L  
West Coast Chamber of Commerce CO  
GMB Architecture Engineering A

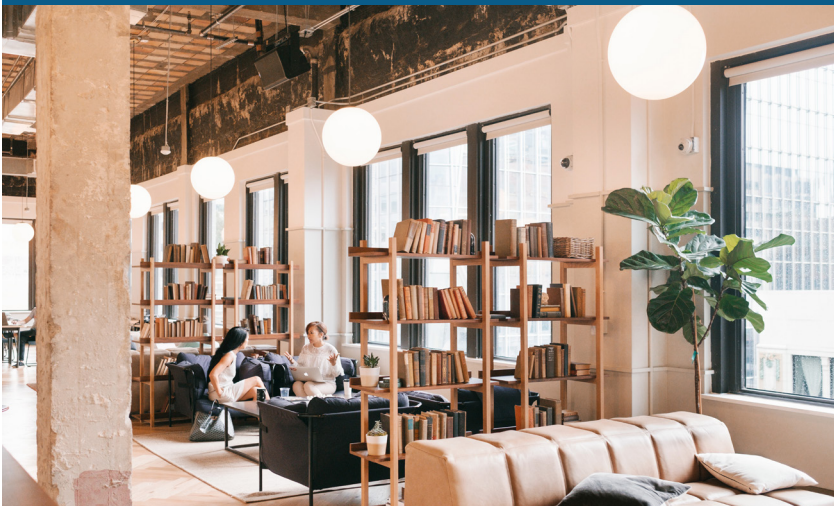


Lakewood Construction helped synthesize a wealth of ideas from community stakeholders to creatively convert a 1970s office into a flexible, visually impactful chamber of commerce building that reflects the world-class innovation residing within West Michigan.

## RENOVATION - \$5 TO \$10 MILLION

### ROGERS-O'BRIEN CONSTRUCTION CO. C

WeWork 708 Main Project N  
Houston L  
WeWork CO  
PGAL A  
JJA Mechanical and Electrical Engineering Consultants E



Rogers-O'Brien led the modernization of the 110-year-old Great Jones Building with an interior renovation that incorporates WeWork's standard design of high-density occupancy floors to accommodate the diverse needs of its clients.



# Eagle Winners

General Contractors/  
Construction Management



## RENOVATION - \$10 TO \$100 MILLION

### C SPAWGLASS CONSTRUCTION

- N Texas A&M University Chemistry Building  
1972 Wing 1st and 2nd Floor Renovation
- L College Station, Texas
- CO Texas A&M University
- A PGAL
- E Shah Smith & Associates Inc.



This Texas A&M chemistry building renovation included upgrades to the MEP infrastructure and new lab casework and fume hoods—with SpawGlass' project team safely maintaining access to specialized equipment and other building floors throughout construction.



## RESIDENTIAL: MULTI-FAMILY AND CONDOMINIUM - UP TO \$100 MILLION

### C LANDIS CONSTRUCTION CO. LLC

- N Iberville Onsite Phases V & VI
- L New Orleans
- CO HRI Properties
- A HCI Architecture Inc.
- E Pace Group LLC



Landis Construction coordinated the fifth and sixth phases of the redevelopment of New Orleans' Iberville Public Housing Complex—consisting of a mix of historical restoration, rehabilitation and new construction spread across 3.5 acres—all while minimizing disturbance to the surrounding occupied neighborhood.



## RESIDENTIAL: SINGLE-FAMILY UP TO \$100 MILLION

### C. RAYMOND DAVIS & SONS INC.

- N Private Residence
- L Philadelphia
- CO Confidential



C. Raymond Davis & Sons gutted a 9,000-square-foot historic residence in an exclusive Philadelphia neighborhood and restored it in line with the Philadelphia Historical Society's requirements and the owner's exceptionally strict quality expectations.

# Pyramid Winners

## Specialty Contractors

### COMMUNITY/PUBLIC SERVICE

#### **C** KLINE ELECTRIC

- N** The Ronald McDonald House
- L** Des Moines, Iowa
- CO** Ronald McDonald Foundation
- A** Simonson and Associates
- E** Brown Engineering

### ELECTRICAL: COMMERCIAL LESS THAN \$2 MILLION

#### **C** WILLMAR ELECTRIC SERVICE

- N** Carris Health Surgery Center
- L** Willmar, Minnesota
- CO** Carris Health
- A** Mohagen Hansen
- E** Dunham Associates
- GC** Marcus Construction

### ELECTRICAL: COMMERCIAL \$2 TO \$10 MILLION

#### **C** STARR ELECTRIC CO. INC.

- N** Schar Center at Elon University
- L** Elon, North Carolina
- CO** Elon University
- A** WER Architects/Planners
- E** TM Engineering Inc.
- GC** The Christman Co.

### ELECTRICAL: INDUSTRIAL LESS THAN \$2 MILLION

#### **C** STARR ELECTRIC CO. INC.

- N** Uptown Bakeries Modular Electrical Room
- L** New Jersey
- CO** Confidential
- A** CRB
- E** CRB
- GC** Confidential

### ELECTRICAL: INDUSTRIAL \$2 TO \$10 MILLION

#### **C** MMR CONSTRUCTORS INC.

- N** BASF Geismar Electrical Reliability Project
- L** Geismar, Louisiana
- CO** BASF
- E** Ford, Bacon & Davis

### ELECTRICAL - ALL PROJECTS OVER \$10 MILLION

#### **C** INTERSTATES

- N** Al-Corn Clean Fuel Ethanol Plant
- L** Claremont, Minnesota
- CO** Al-Corn Clean Fuel
- E** Interstates Engineering Inc.
- GC** McGough Construction

### EXTERIORS: ALL OTHER EXTERIOR FINISHES

#### **C** BAKERTRIANGLE

- N** Aloft + Element Austin Downtown Hotels
- L** Austin, Texas
- CO** White Lodging Services
- A** HKS
- E** Georgia Panel
- GC** DPR Construction

### EXTERIORS: MASONRY, PRECAST OR STONE

#### **C** CAMARATA MASONRY SYSTEMS LTD.

- N** Hines Market Square
- L** Houston
- CO** Hines Interest LP
- A** Ziegler Cooper Architects
- GC** Austin Commercial

### INTERIORS: ACOUSTICAL, DRYWALL, MILLWORK OR PLASTER

#### **C** SPACECON SPECIALTY CONTRACTORS

- N** Country Club Towers II
- L** Denver
- CO** The Broe Group
- A** Solomon Cordwell Buenz
- E** S.A. Miro Inc.
- GC** Swinerton Builders

### MECHANICAL: COMMERCIAL LESS THAN \$10 MILLION

#### **C** SHAPIRO & DUNCAN INC.

- N** United States Holocaust Memorial Museum  
Collections and Conservation Center
- L** Confidential
- CO** United States Holocaust Memorial Museum
- A** Smith Group JJR Inc.
- E** SmithGroup JJR Inc.
- GC** DPR Construction

### MECHANICAL: INDUSTRIAL LESS THAN \$10 MILLION

#### **C** DECCO INC.

- N** Fitchburg Medical Marijuana Facility
- L** Fitchburg, Massachusetts
- CO** Revolutionary Growers Investment Group
- E** The Valiant Group

### MECHANICAL - ALL PROJECTS OVER \$10 MILLION

#### **C** TURNER INDUSTRIES GROUP LLC

- N** Olin - Plaquemine 2018 Turnaround
- L** Plaquemine, Louisiana
- CO** Olin

# Pyramid Winners

## Specialty Contractors

### OTHER SPECIALTY CONSTRUCTION: COMMERCIAL - LESS THAN \$10 MILLION



#### C CHAMBERLIN ROOFING & WATERPROOFING

- N The Buckingham
- L Houston
- CO Seniority Inc.
- A French Engineering LLC

### OTHER SPECIALTY CONSTRUCTION: COMMERCIAL - MORE THAN \$10 MILLION

#### C MILLER & LONG CO. INC.

- N Ballston Quarter
- L Arlington, Virginia
- CO Forest City
- A CallisonRTKL
- E Tadjer Cohen Edelson Associates
- GC Clark Construction Group

### OTHER SPECIALTY CONSTRUCTION: INDUSTRIAL - LESS THAN \$10 MILLION

#### C KWEST GROUP LLC

- N Lamping Station
- L Graysville, Ohio
- CO American Electric Power
- E TRIAD Engineering Inc.

### OTHER SPECIALTY CONSTRUCTION: INDUSTRIAL - MORE THAN \$10 MILLION



#### C LPR CONSTRUCTION CO. LLC

- N Greenville County Power Station 80 Cell ACC
- L Emporia, Virginia
- CO Dominion Power
- E Enxio
- GC Fluor Corp.

### SITework/LANDSCAPE/HARDSCAPE



#### C GROUP INDUSTRIES

- N City Hall Plaza Greenspace
- L Baton Rouge, Louisiana
- CO City of Baton Rouge and Parish of East Baton Rouge
- A Reed Hilderbrand
- E Forte & Tablada

# Pyramid Winners

## General Contractors/ Construction Management

### COMMERCIAL - LESS THAN \$5 MILLION



#### C EXCEL CONTRACTORS LLC

- N Westlake Vinyls VCM Control Room
- L Geismar, Louisiana
- CO Westlake Vinyls Company LP
- A Crump Wilson Architects LLC

### COMMERCIAL - \$10 TO \$25 MILLION



#### C ROBINS & MORTON

- N UltraStar Multi-tainment Center at Harrah's Cherokee
- L Cherokee, North Carolina
- CO Harrah's Cherokee
- A Cornerstone Architecture
- E Reigstad

### COMMERCIAL - \$25 TO \$100 MILLION



#### C E.E. REED CONSTRUCTION LP

- N The Kirby Collection
- L Houston
- CO Thor Equities
- A Kirksey, Keating Architecture, Dianna Wong Architecture + Interior Design
- E Walter P. Moore

### COMMUNITY/PUBLIC SERVICE

#### C HOLTZ BUILDERS INC.

- N Camp Gray "The Ark" Gymnasium
- L Reedsburg, Wisconsin
- CO Camp Gray
- A Architectural Design Consultants Inc.
- E SCL Consulting

# Pyramid Winners

General Contractors/  
Construction Management

## HEALTH CARE - LESS THAN \$10 MILLION

### **C BRECHBILL AND HELMAN CONSTRUCTION CO. INC.**

- N** Hospice of Washington County - Doey's House
- L** Hagerstown, Maryland
- CO** Hospice of Washington County
- A** Bushey Feight Morin Architects
- E** CJL Engineering



## HEALTH CARE - \$25 TO \$100 MILLION

### **C ROBINS & MORTON**

- N** Florida Hospital Carrollwood
- L** Tampa, Florida
- CO** Florida Hospital Carrollwood
- A** Earl Swensson Associates
- E** TLC Engineering for Architecture



## HISTORICAL RESTORATION/RENOVATION LESS THAN \$25 MILLION

### **C MILENDER WHITE**

- N** Byron White U.S. Courthouse
- L** Denver
- CO** General Services Administration (GSA)
- A** Anderson Mason Dale Architects
- E** MEP Engineering Inc.



## HISTORICAL RESTORATION/RENOVATION \$25 TO \$100 MILLION

### **C SKANSKA USA BUILDING**

- N** Cordell Hull State Office Building Renovation and Parking Garage
- L** Nashville, Tennessee
- CO** Tennessee Department of General Services
- A** Centric Architecture
- E** Smith Seckman Reid Inc.

## INDUSTRIAL - LESS THAN \$5 MILLION

### **C KWEST GROUP LLC**

- N** Macksburg Station
- L** Macksburg, Ohio
- CO** American Electric Power
- E** MS Consultants

## INDUSTRIAL - \$5 TO \$15 MILLION

### **C BLACK CONSTRUCTION CORPORATION**

- N** DG Replace Generator Engine No. 5 & 6 (Phase 3), North Power Plant Fac. No. 730
- L** Diego Garcia, British Indian Ocean Territory
- CO** U.S. Department of the Navy
- A** U.S. Department of the Navy



## INDUSTRIAL - \$15 TO \$25 MILLION

### **C PERFORMANCE CONTRACTORS INC.**

- N** Oxea Corporation Propanol 2 Project
- L** Bay City, Texas
- CO** Oxea Corporation

## INDUSTRIAL - \$25 TO \$100 MILLION

### **C WOOD**

- N** Oceana Solar Project
- L** Virginia Beach, Virginia
- CO** Dominion Virginia Power

## INFRASTRUCTURE: HEAVY

### **C BRASFIELD & GORRIE LLC**

- N** Coosa River Dams Aeration Project
- L** Birmingham, Alabama
- CO** Southern Company Services Inc.
- E** HDR Inc.



## INSTITUTIONAL - LESS THAN \$10 MILLION

### **C TURNBULL-WAHLERT CONSTRUCTION INC.**

- N** Cincinnati Country Day Bortz Family Early Childhood Center
- L** Cincinnati
- CO** Cincinnati Country Day School
- A** Michael McInturf Architects
- E** THP Limited Inc.

## INSTITUTIONAL - \$10 TO \$25 MILLION

### **C AMERICAN CONSTRUCTORS**

- N** Del Valle ISD Athletics Facility
- L** Del Valle, Texas
- CO** Del Valle ISD
- A** Stantec
- E** Stantec

## INSTITUTIONAL - \$25 TO \$100 MILLION

### **C BRASFIELD & GORRIE LLC**

- N** UAB Collat School of Business
- L** Birmingham, Alabama
- CO** University of Alabama at Birmingham
- A** Williams Blackstock Architects PC
- E** MBA Engineers Inc.



## MEGA-PROJECTS

### **ALL PROJECTS \$100 TO \$200 MILLION**

### **C SATTERFIELD & PONTIKES CONSTRUCTION**

- N** Klein Cain High School
- L** Klein, Texas
- CO** Klein Independent School District
- A** PBK Architects
- E** Jones/Borne/Inc.



# Pyramid Winners

General Contractors/  
Construction Management

## MEGA-PROJECTS ALL PROJECTS OVER \$200 MILLION



### C **PERFORMANCE CONTRACTORS INC.**

- N Dow Poly B & D
- L Plaquemine, Louisiana
- CO The DOW Chemical Co.
- E Dow Engineering Solutions

## OTHER CONSTRUCTION LESS THAN \$10 MILLION



### C **WANZEK CONSTRUCTION INC.**

- N Goldwind 3S Prototype (Tallest Wind Turbine in the United States)
- L Canyon, Texas
- CO Goldwind Americas
- E Barr Engineering

## OTHER CONSTRUCTION \$10 TO \$100 MILLION

### C **RODGERS BUILDERS INC.**

- N Bank of America Stadium - Concourse 100 Upgrades & 300/400 Club Level Renovations
- L Charlotte, North Carolina
- CO Bank of America
- A Wagner Murray Architects

## PRE-ENGINEERED BUILDING



### C **WARFEL CONSTRUCTION CO.**

- N Aerzen USA Expansion
- L Coatesville, Pennsylvania
- CO Aerzen USA
- A Re:Vision Architecture
- E O'Donnell & Naccarato

## PUBLIC WORKS/ENVIRONMENTAL

### C **MWH CONSTRUCTORS INC.**

- N Fremont Water Pollution Control Center Improvements Project
- L Fremont, Ohio
- CO City of Fremont Water Pollution Control Center
- E MWH Global

## RENOVATION - LESS THAN \$5 MILLION



### C **FCI CONSTRUCTORS INC.**

- N courier. market | bar | kitchen - Grand Hyatt Denver
- L Denver
- CO Grand Hyatt Denver
- A EDG Interior Architecture & gkkworks, CannonDesign
- E The Ballard Group (MEP) / Klok Group (Electrical) / Duro Electric (Electrical)

## RENOVATION - \$5 TO \$10 MILLION

### C **SYNERGY CONSTRUCTION INC.**

- N Westend Interior and Exterior Renovations
- L Marysville, Washington
- CO The Housing Authority of Snohomish County
- A Environmental Works / Rubric Landscape Architecture

## RENOVATION - \$10 TO \$100 MILLION

### C **CORPORATE CONTRACTORS INC.**

- N Stataline Family YMCA
- L Beloit, Wisconsin
- CO Stataline Family YMCA
- A Zimmerman Architectural Studios
- E Harwood Engineering Consultants Ltd.

## RESIDENTIAL: MULTI-FAMILY AND CONDOMINIUM - UP TO \$100 MILLION



### C **BALFOUR BEATTY**

- N Windsor at Celebration
- L Celebration, Florida
- CO Big Rock Partners LLC
- A Gensler
- E OCI Associates Inc.

## RESIDENTIAL: SINGLE-FAMILY UP TO \$100 MILLION



### C **ONDRA-HUYETT ASSOCIATES INC.**

- N Private Residence
- L Allentown, Pennsylvania
- CO Bill and Laura Bachenberg
- A Pioneer Log Homes of British Columbia
- E Design Built

# A Foundation of Safety

## **2018 NATIONAL SAFETY EXCELLENCE AWARD RECIPIENTS**

From exceptional safety records to rigorous education programs, winners of the National Safety Excellence Awards excelled in all areas of ABC's STEP safety management system, demonstrating an extraordinary commitment to safety.

---

Presenting Sponsor



We can show you more.®

## Panel of Judges

**TROY ALLEN**

*Vice President of HSE*  
Primoris Services Corp.  
Baton Rouge, Louisiana

**PAUL CRIVAC**

*Safety Director*  
Three Rivers Corp.  
Midland, Michigan

**CHRIS DIAZ**

*Vice President, Safety Health and Environmental*  
Balfour Beatty Construction  
Plantation, Florida

**DARYL GUERCIO**

*Corporate HSE Compliance Director*  
McDermott  
Baton Rouge, Louisiana

**MELANIE LAIRD**

*Executive Vice President*  
FC Construction Services  
Dallas

**SHELLEY SUTTON**

*Vice President of Shared Services*  
hth companies inc.  
Union, Missouri

**JIM THOMPSON**

*Corporate EH&S Director*  
Kwest Group LLC  
Perrysburg, Ohio

**RALPH RILEY**


*Corporate Safety/Workforce Development Manager*  
S&B Engineers and Constructors Ltd.  
Houston

# Pinnacle Winners

NAICS 236

## GENERAL CONTRACTOR

**ELZINGA & VOLKERS CONSTRUCTION PROFESSIONALS**   
Holland, Michigan

**JM COULL INC.**   
Maynard, Massachusetts

**ROGERS-O'BRIEN CONSTRUCTION CO.**  
Dallas

**TIC-THE INDUSTRIAL CO.**   
Englewood, Colorado

NAICS 237

## HEAVY AND CIVIL ENGINEERING CONTRACTOR

**CIANBRO COS.**   
Pittsfield, Maine

**PRIMORIS INDUSTRIAL CONSTRUCTORS**  
Deer Park, Texas

**S & B ENGINEERS AND CONSTRUCTORS LTD.**   
Houston

**SAULSBURY INDUSTRIES**  
Odessa, Texas

NAICS 238

## SPECIALTY CONTRACTOR

**COLOR WORKS PAINTING INC.**  
New Castle, Delaware

**HTH COS. INC.**   
Union, Missouri

**KWEST GROUP LLC**  
Perrysburg, Ohio

**MKD ELECTRIC**  
Elgin, Illinois

**TDINDUSTRIES INC.**   
Dallas



# Excellence Winners

NAICS 236

## GENERAL CONTRACTOR

**AUSTIN COMMERCIAL**   
Dallas

**FLINTCO LLC**   
Tulsa, Oklahoma

**FORRESTER CONSTRUCTION**  
Rockville, Maryland

**HASKELL**   
Jacksonville, Florida

**MILENDER WHITE**   
Arvada, Colorado

**STELLAR**  
Jacksonville, Florida


**THREE RIVERS CORP.**  
Midland, Michigan

NAICS 237

## HEAVY AND CIVIL ENGINEERING CONTRACTOR

**BARRIERE CONSTRUCTION CO. LLC**  
Matairie, Louisiana

**C.O. FALTER CONSTRUCTION CORP.**  
Syracuse, New York

**REF-CHEM LP**   
Houston

**WOOD**  
Tucker, Georgia

NAICS 238


## SPECIALTY CONTRACTOR

**EASTERN INDUSTRIAL SERVICES**  
Newcastle, Delaware

**FIORE & SONS INC.**  
Denver

**HELIX ELECTRIC**   
San Diego

**INTERSTATES**   
Sioux Center, Iowa

**ISC CONSTRUCTORS LLC**   
Baton Rouge, Louisiana

**STARCON INTERNATIONAL INC.**   
La Porte, Texas

# Merit Winners

NAICS 236

## GENERAL CONTRACTOR

**BLACK CONSTRUCTION CORP.**   
Harmon Industrial Park, Guam

**KELLEY CONSTRUCTION INC.**  
Louisville, Kentucky

**SATTERFIELD & PONTIKES  
CONSTRUCTION**  
Houston

NAICS 238

## SPECIALTY CONTRACTOR

**CHAMBERLIN ROOFING  
& WATERPROOFING**   
Farmers Branch, Texas

**COLONIALWEBB CONTRACTORS**   
Richmond, Virginia

**FISHER SAND & GRAVEL**  
Midland, Michigan

**IAN CORP.**   
Barrigada, Guam

**LANDSCAPE MANAGEMENT  
SYSTEMS INC.**   
Tumon, Guam

**LPR CONSTRUCTION CO. LLC**   
Loveland, Colorado

**M. DAVIS AND SONS INC.**   
Wilmington, Delaware

**PETERSON BECKNER INDUSTRIES INC.**  
Houston

**SCOTT MURPHY AND DANIEL LLC**  
Bowling Green, Kentucky

# Championing a Diverse Industry

## **2018 NATIONAL DIVERSITY EXCELLENCE AWARD RECIPIENTS**

The ABC National Diversity Excellence Awards

recognize members that display exemplary  
diversity leadership in their workforce, supply  
chain and community with best-in-class  
recruitment policies, retention practices, and  
education and mentoring programs.

---

Presenting Sponsor



## Panel of Judges

**JOANNE BROOKS**

*Managing Director*  
JSSB Consulting LLC  
Ellicott City, Maryland

**TERRY HSIAO**

*Head of Strategy*  
Kaleyra  
McLean, Virginia

**LAURA LAPIDUS, ESQ.**

*Management Liability Risk Control Director*  
CNA  
New York

**DAMON LEVERETT, AIA, NCARB, LEED AP**

Tucson, Arizona

**IRMA WEHMEYER**

*Chief Estimator/Project Manager*  
hth companies inc.  
Union, Missouri

**DIANE YOO**

*Senior Vice President*  
JDDA Group  
Houston, Texas

## Diversity Winners

### ASSOCIATE

**ATKINSON, ANDELSON, LOYA, RUUD & ROMO**

Cerritos, California

### GENERAL CONTRACTOR OVER \$33 MILLION

**AUSTIN COMMERCIAL** 

Dallas

**HENSEL PHELPS** 

Tysons Corner, Virginia

### GENERAL CONTRACTOR UNDER \$33 MILLION

**LUNACON CONSTRUCTION GROUP CORP.**

Miami

**WU & ASSOCIATES INC.** 

Mount Laurel, New Jersey

### SUBCONTRACTOR

**GAYLOR ELECTRIC INC.** 

Noblesville, Indiana

### SUPPLIER

**UNITED RENTALS INC.**

Stamford, Connecticut

# National Contractor of the Year Award

## **MAREK**

---

### **STRENGTH FROM WITHIN**

**MAREK, an 81-year-old family business, is the winner of ABC's 2018 Contractor of the Year Award in recognition of its history as an innovator, career builder and champion of the construction workforce.**

From its early days as a small residential drywall company founded by three brothers, to its current stature as one of the largest commercial specialty contractors in the South with more than 1,500 employees and seven regional offices, MAREK has always relied on the power of its people.

Across generations, its leaders have built a business that prides itself on repeat clients, an impressive project portfolio, a stellar safety record, a revered workforce development program and a dedication to the communities where it works.

MAREK's craft professionals, known by clients for their strong work ethic and attention to detail, consistently deliver award-winning results in interior construction specialties including drywall, finishes, trims, sound and fire-rated assemblies, acoustical ceilings, coatings, window treatments and wall coverings, while incorporating the latest innovations in materials and technology.

MAREK's leadership team also demonstrates a commitment to advancing the merit shop values of trust and integrity—serving as one of the founding members of the ABC Houston Chapter and the Dallas-Fort Worth TEXO Chapter, volunteering on several ABC committees and boards, including PAC and the Free Enterprise Alliance, testifying on political and regulatory affairs, and championing the need for investment in immigration reform and apprenticeship programs at the state level and in Washington, D.C.

MAREK lays the foundation for the future of the industry by supporting top-notch education organizations such as NCCER, the Construction Education Foundation in Dallas, the Construction & Maintenance Education Foundation in Houston, Construction Career Collaborative, the Construction Education Foundation of Georgia, and school districts across all MAREK markets.

MAREK is an Accredited Quality Contractor and has achieved STEP Diamond status. The company operates in Austin, Dallas, Harlingen, Houston and San Antonio, Texas, as well as Atlanta and Nashville.

# 2018 STEP Diamond Recipients

A M King	Comfort Systems USA South Central	Interstates Cos.	Robins & Morton
A.J. Kirkwood and Associates Inc.	Commercial Fence Inc.	ISC Constructors LLC	RSI Roofing Inc.
A.R. Marani Inc.	Converse Conditioned Air Inc.	J & J Fire Protection Co. Inc.	RUSH Construction Inc.
ACI Mechanical Inc.	Copeland & Johns	Jack B. Parson Cos.	S & S Roofing Systems Inc.
Aladdin Construction Co. Inc.	Craig & Heidt Inc.	Jacobs	S&B Engineers and Constructors Ltd.
Allison-Smith Co. LLC	Crocker Architectural Sheet Metal Co. Inc.	JAMCo Inc.	S.E.T. - Pacific Inc.
Alloy Construction Service Inc.	D & K Electric Inc.	Jarrett Construction Services Inc.	Samet Corporation
Alpha Mechanical Inc.	DakO Services Inc.	JM Coull Inc.	Saulsbury Industries
Alpine Painting & Sandblasting	Danis Building Construction	Karsten Interior Services	SDV Construction Inc.
American Constructors	DiMarco Constructors LLC	KBR	Sentinel Fence and Contracting
Anthony T. Rinaldi LLC	DiSabatino Construction Co.	Kelley Construction Inc.	Shawhan Sheet Metal LLC
APAC - Mississippi Inc.	Dryden Builders Inc.	Keystone Concrete Placement	Skanska Building Inc.
Apache Industrial Services	E.W. Tompkins Co. Inc.	Kirin Builders LLC	Skiles Group
Atlantic Constructors Inc.	Eastern Industrial Services Inc.	Kwest Group LLC	Slack & Co. Contracting Inc.
Atlas Electrical Construction	Edifice Inc.	Lakeside Project Solutions LLC	Slater Painting Co. Inc.
Austin Industrial Inc.	Edwards Electric Service LLC	Laser Electric Inc.	Southgate Electric Inc.
BakerTriangle	Electra Link Inc.	Lauger Cos. Inc.	Southwest Electrical Contracting Services Ltd.
Barriere Construction Co. LLC	Ellsworth Builders Inc.	LEAD Staffing	SpawGlass Construction Corp.
Bartlett Cocke General Contractors LLC	Elmstar Electric	Lendlease (US) Construction Inc.	Standard Constructors Inc.
BC Construction Group	EMCOR Services New England Mechanical	Lewis Contractors	STARCON International Inc.
Beard Construction Group LLC	Enterprise Commercial Paving	Lone Star Resin Systems Inc.	Steele-Freeman Inc.
Bengal Crane & Rigging	Ergon Maintenance Services	M. Davis & Sons Inc.	Stronghold Engineering Inc.
Black Construction Corporation	Esper Electric Ltd.	MacKenzie Contracting Co. LLC	Suffolk Construction Co. Inc.
Blasy Electric Inc.	EXCEL	Maly Roofing Co. Inc.	Syncon LLC
Bloch Construction Co. Inc.	Fagen Inc.	Manhattan Construction Co.	Teal Construction Co.
Bracken Cos.	Fargo Pacific Inc.	Marek	Tecta America Zero Co.
BrandSafway	FaverGray	Marquis Construction Services Inc.	The Beck Group
BrandSafway Solutions	Fisher Contracting Co.	McCarthy Building Cos. Inc.	The Brevard Co.
Brandt Construction Inc.	Fisher Sand & Gravel Co. Inc.	MDI Inc. General Contractors	The Lemoine Co. LLC
Brasfield & Gorrie LLC	Flint Builders Inc.	Messer Construction Co.	The Mundy Cos.
Breaking Ground Contracting Co.	Flintco LLC	Metropolitan Contracting Co. LLC	Three Rivers Corp.
Brewer Construction Services LLC	Forrester Construction	MetroPower Inc.	TIC-The Industrial Co.
Brock Services LLC	Fortune-Johnson General Contractors	Midstate Site Development LLC	Tracer Construction LLC
Brown & Root Industrial Services LLC	Foulger-Pratt	Mike Werlech Construction Inc.	Triad Electric & Controls Inc.
BRYCON Construction	FS 360 LLC	Mirage Industrial Group LLC	Tri-Construction Co. Inc.
Buist Electric Inc.	Fureigh Electric LLC	MKD Electric Inc.	Trio Electric
Burrow Global Services LLC	G.E. Insulation Co.	MMR Constructors Inc.	Triple "S" Industrial Corp.
Burton Construction	Gainesville Mechanical Inc.	Mountain States Fence Co.	Turner Industries Group LLC
Byrne Construction Services	Garney Construction	Nickle Electrical Cos.	United Group Services Inc.
C. S. Beatty Construction Inc.	Gaylor Electric Inc.	Norrell Construction Inc.	Valley Electrical Contractors Inc.
Caddell Construction Co. (DE) LLC	Gilbane Building Co.	Notch Mechanical Constructors	Van Horn Construction Inc.
Cadence McShane Construction Co. LLC	Great Falls Construction	Nova Group Inc.	VCC LLC
Cajun Industries LLC	Harkins Builders Inc.	Ohio Electric Services of Dayton Inc.	VCS Security Systems Inc.
Campbell Plumbing & Mechanical Contractors	Harvey-Cleary Builders	Ohmstede	VIRTEXCO Corp.
Capital Interior Contractors Inc.	Haskell	Orocon Construction LLC	W.B. Guimarin & Co.
CBG Building Co.	Hayward Electric Co.	Pacific Rim Construction Inc.	W.S. Nielsen Co. Inc.
CD Barnes Construction	Heating & Plumbing Engineers Inc.	PCE Constructors Inc.	W.T. Byler Co.
CECO Pipeline Services Co.	Hoar Construction LLC	PCL Construction Services Inc.	Walker Engineering Inc.
Centennial Contractors Enterprises Inc.	Hurts Wastewater Management Ltd.	PCL Industrial Construction Co.	Wanzek Construction Inc.
Century Contractors Inc.	I.E.-Pacific Inc.	Performance Contractors Inc.	Westgate LLC
Chris Woods Construction Co. Inc.	IAN Construction Corporation	Polk Mechanical LLC	White Construction Group
CIANBRO	ICT - Infiniti Communications Technologies	Primoris Services Corp.	Williams Building Co. Inc.
Circle 8 Crane Services	Industrial Controls of Oklahoma Inc.	QCI Thermal Systems	Windover Construction Inc.
Citadel Builders LLC	Infratech International LLC	R.C. Stevens Construction Co.	Wondra Construction Inc.
Classic Industrial Services Inc.	Insulation Contractor Services	Redd Roofing Co.	Wood Group
ColonialWebb Contractors	Interstate Electrical Contractors Inc.	REPCON INC.	York Electronic Systems Inc.
Color Works Painting Inc.		River Cities Engineering Inc.	Zachau Construction Inc.
		RJ Martin National Contracting Inc.	Zachry Maintenance Services
		RLS Construction Group	
		Robert A. Tucknott & Associates Inc.	

INDEX OF ALL WINNERS

Adolfson & Peterson Construction	15	EXCEL Contractors LLC	21	Poole Anderson Construction LLC	11
Aggregate Technologies Inc.	8	FCI Constructors Inc.	23	Primoris Industrial Constructors	26
American Constructors	16, 22	Fiore & Sons Inc.	8, 27	Ref-Chem LP	27
AP Wyoming	13	Fisher Sand & Gravel	27	RK Mechanical Inc.	8
Atkinson, Andelson, Loya, Ruud & Romo	29	Flintco LLC	27	Robins & Morton	21, 22
Austin Commercial	27, 29	Forrester Construction	27	Roche Constructors Inc.	10
BakerTriangle	20	Gaylor Electric Inc.	4, 29	Rodgers Builders Inc.	23
Balfour Beatty	23	GMi	6	Rogers O'Brien Construction Co.	19, 26
Barriere Construction Co. LLC	27	GROUP Industries	21	S & B Engineers and Constructors Ltd.	16, 26
Benchmark Construction Co. Inc.	12	Haskell	27	Satterfield & Pontikes Construction	22, 27
Bergstrom Electric Inc.	4	Helix Electric	27	Saulsbury Industries	26
BL Harbert International LLC	10	Hensel Phelps	29	Scott Murphy and Daniel LLC	27
Black Construction Corp.	22, 27	Holtz Builders Inc.	21	Shapiro & Duncan Inc.	20
Brasfield & Gorrie LLC	9, 15, 22	hth cos. inc.	26	Shingobee Builders Inc.	15
Brechbill and Helman Construction Co. Inc.	22	IAN Corp.	27	Skanska USA Building	11, 22
Broadmoor LLC	12	Interstates	20, 27	Spacecon Specialty Contractors	20
Building Crafts Inc.	14	ISC Constructors LLC	5, 27	SpawGlass Construction	17, 18
C. Raymond Davis & Sons Inc.	19	JM Coull Inc.	26	Standard Constructors Inc.	9
C.O. Falter Construction Corp.	27	KBR	16	Starcon International Inc.	27
Caddell Construction Co. (DE) LLC	11	Kelley Construction Inc.	27	Starr Electric Co. Inc.	20
Cajun Industries LLC	13	Kline Electric	20	Stellar	27
Camarata Masonry Systems Ltd.	20	Kwest Group LLC	21, 22, 26	Synergy Construction Inc.	23
Chamberlin Roofing & Waterproofing	6, 21, 27	LPR Construction Co. LLC	21, 27	T.W. Frierson Contractor Inc.	17
Cianbro Companies	26	Lakewood Construction	18	TDIndustries Inc.	7, 26
ColonialWebb Contractors	27	Landis Construction Co. LLC	10, 19	Telligent Masonry LLC	6
Color Works Painting Inc.	26	Landscape Management Systems Inc.	27	The Weitz Co.	14
Corporate Contractors Inc.	23	Lunacon Construction Group Corp.	29	Three Rivers Corp.	27
Crowder Construction Co.	18	M & D Mechanical Contractors Inc.	7	TIC-The Industrial Co.	26
David Allen Company Inc.	7	M. Davis and Sons Inc.	27	Triad Electric & Controls	5
DECCO Inc.	20	Milender White	22, 27	Turnbull-Wahlert Construction Inc.	22
DonahueFavret Contractors Inc.	13	Miller & Long Co. Inc.	21	Turner Industries Group LLC	9, 20
Doster Construction Co.	17	MKD Electric	26	United Rentals Inc.	29
E.E. Reed Construction LP	21	MMR Constructors Inc.	5, 20	Wanzek Construction Inc.	23
Eastern Industrial Services	27	MWH Constructors Inc.	23	Warfel Construction Co.	23
Elzinga & Volkers Construction Professionals	26	Ondra-Huyett Associates Inc.	23	Willmar Electric Service	20
EnviroVantage	4	PCL Industrial Construction Co.	14	Wood	22, 27
		Performance Contractors Inc.	22, 23	Wu & Associates Inc.	29
		Peterson Beckner Industries Inc.	27		

## Thank You to Our Sponsors

---

National Excellence in Construction Presenting Sponsor

---



---

National Safety Excellence Award Presenting Sponsor

---



We can show you more.®

---

National Diversity Excellence Award Presenting Sponsor

---



---

National Contractor of the Year Presenting Sponsor

---



---

Post-event Reception Sponsors

---



**KWEST GROUP**  
Civil Construction and Environmental Services







440 FIRST ST. NW, SUITE 200  
WASHINGTON, D.C., 20001  
(202) 595-1505  
ABC.ORG