



# National Excellence in Construction® Awards

**WEDNESDAY, FEB. 26, 2025**

TOP CONSTRUCTION PROJECTS AND TEAMS  
INDUSTRY-LEADING HEALTH AND SAFETY PROGRAMS  
CHAMPIONS OF INCLUSION, DIVERSITY AND MERIT





# National Excellence in Construction Awards

PANEL OF JUDGES / 3

## Eagle Winners

SPECIALTY CONTRACTORS / 4  
GENERAL CONTRACTORS / 10

## Pyramid Winners

SPECIALTY CONTRACTORS / 20  
GENERAL CONTRACTORS / 22

# National Safety Excellence Awards

PANEL OF JUDGES / 27

## Pinnacle Winners

GENERAL CONTRACTORS / 28  
HEAVY AND CIVIL ENGINEERING CONTRACTORS / 29  
SPECIALTY CONTRACTORS / 29

## Excellence Winners

GENERAL CONTRACTORS / 30  
HEAVY AND CIVIL ENGINEERING CONTRACTORS / 30  
SPECIALTY CONTRACTORS / 30

## Merit Winners

GENERAL CONTRACTORS / 31  
HEAVY AND CIVIL ENGINEERING CONTRACTORS / 31  
SPECIALTY CONTRACTORS / 31

# National Inclusion, Diversity and Merit Excellence Awards

PANEL OF JUDGES / 33

## National Inclusion, Diversity and Merit Excellence Award Winners

ASSOCIATE/SUPPLIER / 33  
GENERAL CONTRACTOR (OVER \$33 MILLION) / 33  
GENERAL CONTRACTOR (UNDER \$33 MILLION) / 33  
SUBCONTRACTOR / 33

# National Contractor of the Year Award

## National Contractor of the Year Winner / 34

# Index of All Winners / 36

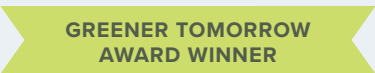
# Program Sponsors / 37



**ABC’s Top Performers** lists recognize ABC member contractors’ achievements in safety, quality, diversity and project excellence ranked by work hours, with special designations identified. The annual listings highlight contractors that have earned ABC’s Accredited Quality Contractor credential for their commitment to corporate responsibility in quality, safety, talent management, education, community relations and inclusion, diversity and merit.

[abc.org/abctopperformers](http://abc.org/abctopperformers)

Select Eagle Award-winning projects have received special recognition for their excellence in design-build, sustainability, technology and innovation and productivity.



Award Sponsor

**PROCORE**

## Built on Excellence

# 2024 EXCELLENCE IN CONSTRUCTION AWARD RECIPIENTS

The Excellence in Construction Awards honor the skill and creativity of the entire team—contractor, owner, architect and engineer—responsible for an outstanding merit shop construction project. The 2024 award recipients exceeded expectations in innovation and quality.

---

Program Sponsor





# Panel of Judges

**Michael Barker**

Operations Manager  
Hensel Phelps Construction  
Tysons Corner, Virginia

**Michael R. Beglinger**

Deputy Director, Program and  
Project Management, Office  
of Planning, Design, and  
Construction  
Smithsonian Institution  
Washington

**Lisa A. Berkey, P.E.**

Assistant Vice President, Design  
and Construction, Retired  
Office of Physical Plant, Penn  
State University  
University Park, Pennsylvania

**Laura Cooley**

Founder  
Developing Construction Leaders  
Orlando, Florida

**Andrew Dettmann**

Vice President of Construction -  
50k & Specialty Banners  
Dick's Sporting Goods  
Coraopolis, Pennsylvania

**Howie Ferguson**

Executive Director  
Construction Owner Association  
of America  
Austell, Georgia

**Stephanie Hixson, PE, LEED AP**

Kensington, Maryland

**Shane Kirkpatrick**

President  
GROUP Contractors  
Baton Rouge, Louisiana

**Steve Kuhn**

Founder and Executive Director  
ShareBuilt  
Franklin, Tennessee

**Kris Lengieza**

Vice President, Global Technology Evangelist  
Procure Technologies  
Jupiter, Florida

**Tommy Linstroth, LEED Fellow**

Founder and CEO  
Green Badger  
Savannah, Georgia

**Dave Mielke**

President  
MIELKE Holdings LLC  
Tampa, Florida

**Derek Ross**

Director, Office of Planning Design  
and Construction  
Smithsonian Institution  
Washington

**Jeffrey Rubenstone**

Deputy Editor, News & Technology  
Engineering News-Record  
New York

**Hugh Seaton**

CEO  
The Link  
Austin, Texas

**Jay Snyder**

President and Principal  
Big Blue Innovations  
Cary, North Carolina

**Dave Spencer**

President  
S. David & Co. LLC  
Jacksonville, Florida

**Richard Thomas, PLC**

Director, State/Local Legislative Affairs  
Design-Build Institute of America  
Washington

# Eagle Winners

## Specialty Contractors



ELECTRICAL: COMMERCIAL >  
UP TO \$5 MILLION

- C** CAROLINAPOWER
- N** Clemson University Memorial Stadium Renovations
- L** Clemson, South Carolina
- CO** Clemson University
- A** LS3P
- E** RMF
- GC** Brasfield & Gorrie

This project centered on fan experience upgrades, including a private club buildout and an overhaul of a key parking lot. A major undertaking for CarolinaPower was the electrical and data infrastructure that makes up the inside of the spectacular new video board.



ELECTRICAL: COMMERCIAL >  
\$5 TO \$20 MILLION

- C** STARR ELECTRIC CO. INC.
- N** CaroMont Critical Care Tower Project
- L** Gastonia, North Carolina
- CO** CaroMont Health
- A** McMillan Pazdan Smith Architecture
- E** RN&M Engineers
- GC** Robins & Morton

Starr Electric Co.'s four-story, 176,811-square-foot expansion at CaroMont Health, part of a \$350 million investment, added 78 patient rooms, modern support spaces and critical infrastructure. Completed safely on a fast-track schedule, it featured an innovative collaboration and fire alarm upgrades.



ELECTRICAL: INDUSTRIAL >  
UP TO \$5 MILLION

- C** TRIAD ELECTRIC & CONTROLS
- N** OxyChem Geismar Caustic Conduit Project
- L** Geismar, Louisiana
- CO** OxyChem
- A** Sigma
- E** Sigma

Triad excelled in the \$7.6-million OxyChem Geismar Caustic Conduit Project, overcoming extreme hazards, complex cutovers and scheduling demands. Through meticulous planning, rigorous safety protocols and innovative solutions, flawless execution was ensured.





# Eagle Winners

## Specialty Contractors



PRODUCTIVITY  
AWARD WINNER

ELECTRICAL: INDUSTRIAL >  
\$5 TO \$20 MILLION

**C** ISC CONSTRUCTORS LLC

**N** Rubicon Geismar Electrical 15Kv Upgrade Project

**L** Geismar, Louisiana

**CO** Huntsman Rubicon

**E** ISC Engineering

ISC successfully upgraded and creatively installed roughly 60,000 feet of electrical cable along with a new electrical distribution center totaling 70,000 work hours without a single incident or OSHA-recordable incident.



ELECTRICAL > MORE THAN \$20 MILLION

**C** TRIAD ELECTRIC & CONTROLS

**N** Methanex G3 Project

**L** Geismar, Louisiana

**CO** Methanex

**E** KBR

Triad Electric & Controls played a crucial role in the Methanex G3 Project, executing a \$47-million electrical and instrumentation scope in Geismar, Louisiana. Despite a 46.8% scope increase and pandemic challenges, Triad delivered on time, showcasing unmatched safety, quality and innovation.



EXTERIORS > EXTERIOR FINISHES

**C** MOORE INDUSTRIES LLC

**N** ExxonMobil 2023 Roofing Program

**L** Baton Rouge, Louisiana and Beaumont, Texas

**CO** ExxonMobil

**GC** Moore Industries LLC

Moore Industries completed ExxonMobil's 2023 roofing program, installing innovative liquid rubber membrane coatings to more than 240,000 square feet of defective roofing across 13 occupied buildings located along the Gulf Coast. The project was completed on time, within budget and with zero safety incidents.





# Eagle Winners

## Specialty Contractors



EXTERIORS > MASONRY, PRECAST OR STONE

**C** TELLIGENT MASONRY LLC

**N** Villanova University CEER

**L** Villanova, Pennsylvania

**CO** Villanova University

**A** Robert A.M. Stern Architects LLP

**GC** Wohlsen Construction

With 4,200 work hours, Villanova was delivered on budget and on time. The project features 1,150 cast-stone units carefully engineered and installed in the semi-finished interior with pre-construction coordination between Telligent, suppliers, the architect and the general contractor. An additional 4,500 manufactured-stone pieces were used for site work.



INTERIORS > ACOUSTICAL, DRYWALL, MILLWORK OR PLASTER

**C** BOUMA CORP.

**N** Gerald R. Ford International Airport Elevate Concourse A Expansion

**L** Grand Rapids, Michigan

**CO** Gerald R. Ford International Airport

**A** HKS Architects

**E** Hoffman Consultants (Structural CFMF); C&S Cos. (Civil/Structural)

**GC** The Christman Co.

Through craftsmanship, flexibility and innovation, Bouma partnered with Christman to transform the existing airport into a premier facility by adding eight new gates, a wider concourse, a sensory room and custom ceilings highlighting an impressive barrel roof, all without interruption to an active airport.



INNOVATION  
AWARD WINNER

PRODUCTIVITY  
AWARD WINNER



MECHANICAL: COMMERCIAL > UP TO \$5 MILLION

**C** CAPITAL INDUSTRIES LLC

**N** University of Texas E-Sports

**L** Austin, Texas

**CO** University of Texas

**A** Perkins & Will

**E** Shah Smith

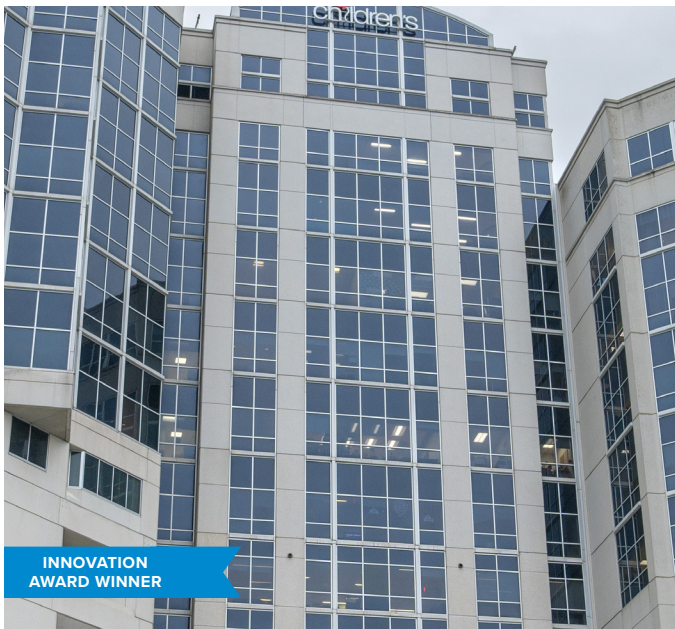
**GC** QA Construction

Capital Industries served as the mechanical and plumbing contractor for the renovation of a lounge into an esports arena at the University of Texas' student union building. The project team supported the university's advancement goals while maintaining student activities in the structure.



# Eagle Winners

## Specialty Contractors



INNOVATION  
AWARD WINNER

MECHANICAL: COMMERCIAL >  
\$5 TO \$20 MILLION

**C** **TD INDUSTRIES INC.**

**N** Children's Medical Center Emergency  
Department Renovation

**L** Dallas

**CO** Children's Health

**A** Page

**E** SW Associate LLC

**GC** JE Dunn Construction

TDIndustries renovated the plumbing and mechanical systems for the Children's Medical Center Emergency Department, a top-tier teaching hospital. Skillfully utilizing BIM and VDC, TD completed the renovation impeccably and three months early, all while the hospital operated continuously.



MECHANICAL: INDUSTRIAL >  
UP TO \$2 MILLION

**C** **MOORE INDUSTRIES LLC**

**N** U.S. Department of Energy Slop Oil  
Tank and Pump

**L** Winnie, Texas

**CO** Fluor Federal Petroleum Operations

**E** Vali Cooper International

Moore Industries completed a \$1.8-million slop oil process system for the U.S. Department of Energy under an unusually fast-tracked schedule. The project involved 92% self-performed labor, extensive collaboration, innovative methods and successful management of weather challenges, scope changes and site constraints.



MECHANICAL: INDUSTRIAL > \$2 TO \$20 MILLION

**C** **M&D MECHANICAL CONTRACTORS**

**N** NASA Building 4619 Mechanical  
Systems Revitalization

**L** NASA Marshall Space Flight Center,  
Alabama

**CO** NASA

**A** NASA

**E** NASA

**GC** Birmingham Industrial Construction

M&D Mechanical upgraded NASA's Marshall Space Flight Center Building 4619's HVAC systems. This involved replacing steam with natural gas boilers, installing new air handling equipment, ductwork, hydronic piping and integrating direct digital controls to ensure uninterrupted testing for aerospace missions.





# Eagle Winners

## Specialty Contractors



MECHANICAL > MORE THAN \$20 MILLION

**C WORTH & CO. INC.**

**N** Great Wolf Lodge Hotel and Waterpark

**L** Perryville, Maryland

**CO** Neuman Pools

**A** Neuman Pools

**E** Stantec & Water Technology Inc.

**GC** Turner Construction Co.

The Great Wolf Lodge project included a 126,000-square-foot waterpark and a 700-room hotel with entertainment and dining options. Worth & Co.'s teams delivered HVAC and plumbing services, installing equipment, pumps and piping for both the mechanical room and pool areas.



### SITework / LANDSCAPE / HARDSCAPE

**C KWEST GROUP**

**N** Mike's Run Slide Remediation

**L** Ashford, West Virginia

**CO** American Electric Power

**E** Schnabel Engineering

To restore and stabilize a landslide threatening an AEP high-voltage transmission tower, Kwest Group battled a deluge of rainfall, steep grades that prevented the use of traditional equipment and unknown subsurface conditions to complete a safe and successful project for the owner.



SPECIALTY CONSTRUCTION: COMMERCIAL > UP TO \$3 MILLION

**C AGGREGATE TECHNOLOGIES INC.**

**N** Houston Methodist Hospital Centennial Tower

**L** Houston

**CO** Houston Methodist Hospital

**A** Page

**E** Walter P. Moore

**GC** Vaughn Construction

With no interruption to the hospital, ATI safely demolished and removed 3,700 square feet of six-inch precast structural concrete wall panels up to 60 feet off the ground over the existing hospital with fully functioning operating rooms below the work area.





# Eagle Winners

## Specialty Contractors



**SPECIALTY CONSTRUCTION: COMMERCIAL > MORE THAN \$10 MILLION**

**C BAKER CONCRETE CONSTRUCTION INC.**

**N** Nashville Yards Parcel 9A3 and 9B3 Residential Towers

**L** Nashville, Tennessee

**CO** Streetlights Residential

**A** Gresham Smith & Partners PC/ StreetLights Residential

**E** Magnusson Klemencic Associates Inc.

Baker was contracted to complete the full concrete shell package for two residential towers—one standing 34 stories and the second at 33 stories. The towers are supported by a 350,000-square-foot, six-story underground parking structure.

**SPECIALTY CONSTRUCTION: INDUSTRIAL > \$3 TO \$10 MILLION**

**C KWEST GROUP**

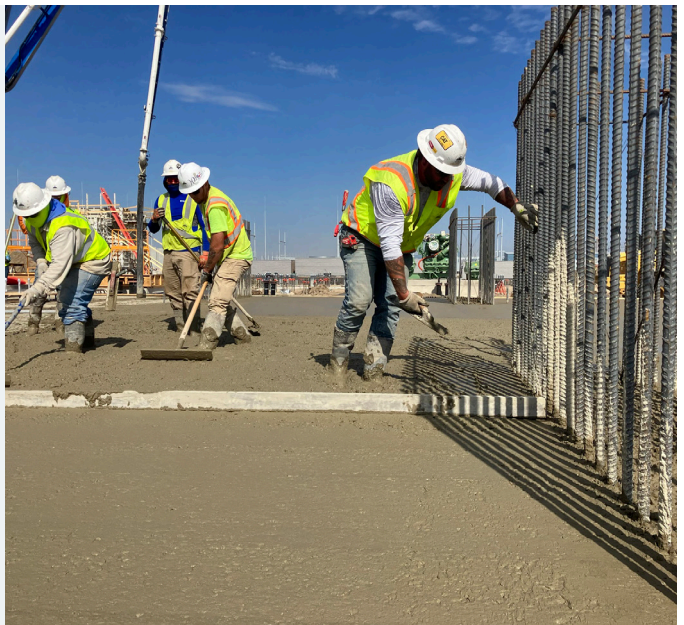
**N** Big River Steel ASU Project

**L** Osceola, Arkansas

**CO** Big River Steel

**E** MLEA Inc.

Kwest Group completed civil, earthwork and concrete for a new air separation unit under a collaborative contract. Overcoming design delays, labor shortages, supply disruptions and weather challenges, Kwest's expertise and commitment delivered best-in-class results, setting on-site performance benchmarks.



**SPECIALTY CONSTRUCTION: INDUSTRIAL > MORE THAN \$10 MILLION**

**C I&I SOFT CRAFT SOLUTIONS**

**N** Dominion Energy Upgrade and Heat Trace and Insulation Replacement on HRSG

**L** Gaston, South Carolina

**CO** Columbia Energy Center

**E** I&I Soft Craft Solutions

A 2022 severe freeze impacted Columbia Energy Center in South Carolina, necessitating a vital winterization upgrade. Insulations LLC was contracted to design the project—executing heat tracing, insulation and scaffolding services, while accommodating a 50% increase in scope and successfully completing the project in 11 months.



# Eagle Winners

## General Contractors



COMMERCIAL > UP TO \$10 MILLION

**C KAPLAN CONSTRUCTION**

- N** Castle Island Brewery South Boston
- L** Boston
- CO** Castle Island Brewing Co.
- A** Joe the Architect
- E** BLW Engineers

Overcoming challenges like unanticipated existing conditions, contaminated soil and a tight footprint, Kaplan Construction safely and successfully transformed a century-old industrial building in South Boston into Castle Island Brewing Co.’s second taproom and brewhouse.



COMMERCIAL > \$10 TO \$25 MILLION

**C RUDICK CONSTRUCTION GROUP**

- N** InfNity Views
- L** Austin, Texas
- CO** Rastegar Property Co.
- A** Corgan
- E** Click Engineering (Structural); WGI (Civil/MEP)

InfNity Views, a 36,418-square-foot Class A shell and core building sits on a 0.31-acre, zero-lot site. The boutique office features a steel cantilever, a glass facade, a sloped terrain and intricate concrete finishes—all achieved through meticulous coordination and innovation.



INNOVATION  
AWARD WINNER



COMMERCIAL > \$25 TO \$100 MILLION

**C SATTERFIELD & PONTIKES CONSTRUCTION**

- N** Fort Bend County Epicenter
- L** Rosenberg, Texas
- CO** Stonehenge Holdings
- A** PBK Sports
- E** Walter P. Moore

The Fort Bend Epicenter is a remarkable example of innovative design and construction prowess. Satterfield & Pontikes Construction built this unique 230,000-square-foot sports and entertainment center under a fast 14-month schedule to deliver the project on time and within budget.



# Eagle Winners

## General Contractors



COMMERCIAL > \$100 TO \$250 MILLION

**C** MANHATTAN CONSTRUCTION CO.

- N** Choctaw Landing
- L** Hochatown, Oklahoma
- CO** Choctaw Nation of Oklahoma
- A** JCJ Architecture
- E** Chavez-Grievies Consulting Engineers

Choctaw Landing is a stunning, new, four-story, 175,000-square-foot entertainment and resort development in Hochatown, Oklahoma. It houses a casino, restaurant, mercantile and hotel, all set against the backdrop of the beautiful Ouachita Mountains and nearby Broken Bow Lake.

COMMUNITY / PUBLIC SERVICE

**C** T.W. FRIERSON CONTRACTOR INC.

- N** Nashville Women’s Rescue Mission
- L** Nashville, Tennessee
- CO** Nashville Rescue Mission
- A** DCi
- E** Genesis Engineering

T.W. Frierson served as the design-build partner for the Nashville Rescue Mission’s Women’s Campus, delivering a 70,880-square-foot facility with 348 beds, essential amenities and enhanced communal spaces to support women and families experiencing homelessness.



DESIGN-BUILD  
AWARD WINNER



FEDERAL GOVERNMENT / MILITARY > UP TO \$15 MILLION

**C** MOORE INDUSTRIES LLC

- N** U.S. Department of Energy Phase 3 Building Upgrades
- L** Freeport, Texas
- CO** Fluor Federal Petroleum Operations
- E** Vali Cooper International

Moore Industries upgraded three buildings totaling 28,000 square feet for the U.S. Department of Energy, completing extensive renovations and unforeseen structural repairs ahead of schedule. The project encompassed 9,247 work hours with zero incidents, overcoming labor challenges, scope changes and security constraints.





# Eagle Winners

## General Contractors



FEDERAL GOVERNMENT / MILITARY >  
\$15 TO \$100 MILLION

**C** JCCBG, JORDON CONSTRUCTION CO. AND BRASFIELD & GORRIE

- N** Hydrologic Instrumentation Facility
- L** Tuscaloosa, Alabama
- CO** U.S. Geological Survey
- A** Stanley Consultants
- E** Stanley Consultants

The HIF is a critical facility for U.S. Geological Survey water research that includes hydraulic, water-quality and field-testing labs, environmental chambers, a sensor innovation space, a warehouse, an auditorium, a network operations center and offices. There were 383,180 work hours completed on the project with zero recordables and lost time incidents.



FEDERAL GOVERNMENT / MILITARY >  
\$100 TO \$250 MILLION

**C** BL HARBERT INTERNATIONAL LLC

- N** New U.S. Embassy
- L** Windhoek, Namibia
- CO** U.S. Department of State Overseas Buildings Operations
- A** Page Southerland Page LLP
- E** KPFF Protective Design (Civil); Ehlert/ Bryan Inc. (Structural); Mason & Hanger (MEP)

BL Harbert International partnered with the U.S. Department of State Bureau of Overseas Buildings Operations to design and construct the new U.S. embassy in Windhoek, Namibia. The design and construction craftsmanship evidenced in the new embassy symbolize the strong relationship between the United States and Namibia.



HEALTH CARE > UP TO \$25 MILLION

**C** QUANDEL ENTERPRISES LLC

- N** Penn State Health Milton S. Hershey Medical Center 3rd Floor Hospital Renovations Phase 2
- L** Hershey, Pennsylvania
- CO** Penn State Health Milton S. Hershey Medical Center
- A** FLAD Associates
- E** WSP

Penn State Health utilized Pyramid's knowledge of their premier facility to complete this intricate renovation. With the main OR suite below and ICU above, every critical system was touched. Detailed cooperation allowed construction to occur with minimal disruption to hospital operations.





# Eagle Winners

## General Contractors



HEALTH CARE > \$25 TO \$100 MILLION

**C WHITE CONSTRUCTION**

**N** Westminster Expansion Phase III

**L** Austin, Texas

**CO** Westminster

**A** Pi Architects

Westminster, a senior living community in Austin, underwent a major transformation, adding 135 living units, three levels of underground parking, and new amenities like a dining area, a bar, meeting rooms and expanded wellness areas. The facility prioritizes residents' comfort and convenience.



HEALTH CARE > \$100 TO \$250 MILLION

**C SKANSKA USA BUILDING INC.**

**N** Orlando Health Jewett Orthopedic Institute

**L** Orlando, Florida

**CO** Orlando Health

**A** Page

**E** TLC

The Orlando Health Jewett Orthopedic Institute is Florida's first specialty orthopedic hospital. It combines a 12-operating room ambulatory surgery center with a 75-bed inpatient hospital and connects to other Orlando Health facilities via two elevated pedestrian bridges.



HISTORICAL RESTORATION / RENOVATION > UP TO \$15 MILLION

**C DUNHILL DEVELOPMENT AND CONSTRUCTION LLC**

**N** Houston City Hall Basement Renovation Project

**L** Houston

**CO** City of Houston

**A** Rey de la Reza Architects Inc.

**E** Infrastructure Associates Inc.

This project encompassed the conversion of the Houston City Hall basement, devastated by Hurricane Harvey, into a space featuring a 311 call center, wellness center, the distinguished mayor's conference room and two submarine-style custom flood doors.





# Eagle Winners

## General Contractors



HISTORICAL RESTORATION / RENOVATION > \$15 TO \$100 MILLION

**C BORDEAUX CONSTRUCTION CO. INC.**

**N** Visitor Center at Fort Fisher Historic Site

**L** Kure Beach, North Carolina

**CO** North Carolina Department of Natural and Cultural Resources

**A** Clark Nexsen

**E** Clark Nexsen

The Fort Fisher Visitor Center is a 24,300-square-foot facility between the Atlantic Ocean and Cape Fear River that combines historical significance with modern design. In 2021, it attracted over 1 million visitors, serving as a key educational and exploration hub.

INDUSTRIAL > UP TO \$10 MILLION

**C PERFORMANCE CONTRACTORS INC.**

**N** Total Energies 2024 SM Turnaround Project

**L** Carville, Louisiana

**CO** Total Energies

The 2024 SM Turnaround was a structural and mechanical discipline project completed by Performance Contractors. Reheaters were replaced, which included large bore welds and heavy lifts. The convection section of the superheater was replaced due to a recent emergency burnout.



INDUSTRIAL > \$10 TO \$25 MILLION

**C CAJUN INDUSTRIES LLC**

**N** Westlake Expansion Project

**L** Geismar, Louisiana

**CO** Westlake Vinyls Company LP

**E** Hargrove Engineering

The success of the Westlake Expansion Project can be attributed to the strong relationships and transparency between Westlake and Cajun. The teams involved carefully assessed each additional scope to optimize the use of existing resources and meet challenging, dynamic deadlines.





# Eagle Winners

## General Contractors



INDUSTRIAL > \$25 TO \$50 MILLION

**C** EXCEL GROUP

**N** Linde TSMC Semiconductor

**L** Phoenix

**CO** Linde

**E** Linde

The Linde TSMC Semiconductor Facility features 44 miles of piping and 7,932 cubic yards of excavation, connecting clean air systems for ultra-pure conditions, ensuring high-quality semiconductor manufacturing despite challenging environmental conditions.



INDUSTRIAL > \$100 TO \$250 MILLION

**C** PERFORMANCE CONTRACTORS INC.

**N** Chevron LTO Project

**L** Pasadena, Texas

**CO** Chevron Corp.

**E** S&B Engineers and Constructors Ltd.

The LTO project is a total plant conversion of the Chevron Pasadena Refinery to produce sustainable fuel, boasting 1.4 million safe work hours. Utilizing U.S. oil, it processes and distributes domestically, enhancing sustainability and bolstering the U.S. economy.



INFRASTRUCTURE: HEAVY > UP TO \$100 MILLION

**C** CIANBRO CORP.

**N** North Hero Grand Isle Bridge Replacement

**L** North Hero and Grand Isle, Vermont

**CO** Vermont Agency of Transportation

**E** HDR

While replacing the historic double-leaf bascule bridge, vehicular and marine access was maintained. The schedule was impacted by winter conditions, the boating season, time-of-year restrictions, the pandemic and a 12-month delay to remediate contaminated soil. Despite these challenges, the bridge opened on schedule.





# Eagle Winners

## General Contractors



INSTITUTIONAL > UP TO \$15 MILLION

**C DONAHUEFAVRET CONTRACTORS INC.**

- N** Tulane University School of Medicine Reily Pavilion Lab 4th Floor
- L** New Orleans
- CO** Tulane University
- A** Mathes Brierre Architects
- E** Huseman & Associates LLC

The fourth-floor renovation of Tulane University’s Reily Pavilion delivered a new significant research laboratory space for the university as part of its master plan. Completed in just 90 days, this fast-tracked project overcame several challenges unique to laboratory construction.



INSTITUTIONAL > \$35 TO \$100 MILLION

**C SATTERFIELD & PONTIKES CONSTRUCTION**

- N** Cypress-Fairbanks ISD Visual and Performing Arts Center
- L** Cypress, Texas
- CO** Cypress-Fairbanks Independent School District
- A** PBK Architects
- E** Dally + Associates

The Cypress-Fairbanks Independent School District Visual and Performing Arts Center, built by Satterfield & Pontikes Construction, is an 85,000-square-foot facility with exceptional features that showcase materials from around the world. The complexity and innovative delivery method make it an infrastructure marvel.



INSTITUTIONAL > \$100 TO \$250 MILLION

**C R.C. MATHEWS CONTRACTOR**

- N** Thomas F. Frist Jr. College of Medicine at Belmont University
- L** Nashville, Tennessee
- CO** Belmont University
- A** Earl Swensson Associates
- E** Ross Bryan Associates (Structural); Catalyst Design Group (Civil); I.C. Thomasson (MEP)

The Frist College of Medicine blends traditional learning with cutting-edge simulation technology, fostering interdisciplinary collaboration among medical, nursing, pharmacy and therapy students. The 270,000-square-foot facility includes classrooms, labs, a state-of-the-art simulation center, an anatomy lab and specialized medical school spaces.



# Eagle Winners

## General Contractors



MEGAPROJECT > OVER \$250 MILLION

**C HENSEL PHELPS**

**N** WMATA Virginia Headquarters Building

**L** Alexandria, Virginia

**CO** Washington Metropolitan Area Transit Authority

**A** Gensler

**E** Thornton Tomasetti

The WMATA Virginia Headquarters Building is a 430,000-square-foot, 14-story, Class A office building that houses over 1,400 employees. The \$245-million, LEED Gold project includes three levels of parking, a prominent main lobby, an innovation lab and amenities.



### PRE-ENGINEERED BUILDING

**C T.W. FRIERSON CONTRACTOR INC.**

**N** Portobello America

**L** Baxter, Tennessee

**CO** Portobello America

**A** Design Innovation Architects

**E** Bennett & Pless Inc.

T.W. Frierson partnered with Portobello America to construct a nearly 1-million-square-foot manufacturing facility on a 94-acre site in Baxter, Tennessee. The project features a pre-engineered metal building spanning nearly half a mile in length and one of Tennessee's first porcelain tile rainscreen facades. Despite challenges like supply chain delays and environmental hurdles, the team delivered the state-of-the-art facility on time.



### PUBLIC WORKS / ENVIRONMENTAL

**C METHUEN CONSTRUCTION CO. INC.**

**N** Manchester Water Works  
Merrimack River Water Treatment Plant and Pump Station

**L** Manchester, New Hampshire

**CO** Manchester Water Works

**A** CDM Smith

**E** CDM Smith

Methuen constructed a 7.2 MGD drinking water treatment plant and raw water pumping station, including a 20,000-square-foot treatment building, 3,000-square-foot pumping station, filtration equipment, yard piping, a 500,000-gallon clear well tank and site modifications.





# Eagle Winners

## General Contractors



RENOVATION > \$5 TO \$20 MILLION

**C** GROUP CONTRACTORS LLC

**N** H.L. Bourgeois High School Hurricane Ida Repairs Project

**L** Gray, Louisiana

**CO** Terrebonne Parish School Board

**A** Gros Flores Positerry LLC

**E** Thompson Luke & Associates LLC

GROUP worked to restore H. L. Bourgeois High School in the wake of Hurricane Ida even as the school remained fully functioning. In the process, the project team worked closely with school administrators to coordinate activities both inside and outside the school.



RENOVATION > \$20 TO \$100 MILLION

**C** GLOBAL PACIFIC DESIGN BUILDERS LLC

**N** Housing Operations and Maintenance Services and Change of Occupancy Maintenance

**L** Yigo and Santa Rita, Guam

**CO** NAVFAC Pacific Services Contracts Branch

This project was designed to fulfill Naval Facilities Engineering Systems Command Pacific’s mission of 24/7 operations of sustainment, renovation and modernization of over 3-million-square-foot military housing facilities to support Guam’s Navy and Air Force Housing Operations and Maintenance Services and Change of Occupancy Maintenance Services.



RESIDENTIAL > SINGLE-FAMILY UP TO \$100 MILLION

**C** C. RAYMOND DAVIS & SONS INC.

**N** Entertainment Barn Retreat

**L** Rumson, New Jersey

**CO** Confidential

**A** Period Architecture Ltd.

**E** Princeton Junction Engineering PC

This stunning project involved constructing an entertainment barn, garage studio, tennis court and greenhouse. With high-end finishes, artistic details, technical features, custom furnishings and extensive landscaping, this unique and masterfully crafted retreat seamlessly blends traditional charm with modern luxury.





# Eagle Winners

## General Contractors



RESIDENTIAL > ALL RESIDENTIAL  
\$100 TO \$250 MILLION

**C** SKYCORE BUILDERS INC.

**N** The Monarch

**L** Queens, New York

**CO** Archer Towers Phase I Development LLC

**A** Studio V Architecture

**E** Cosentini Associates (MEP); WSP (Structural); Langan (Civil); Simpson Gumpertz & Heger (Envelope)

The Monarch is a 26-story, mixed-use development that features 605 residential units within 541,589 square feet. Its modern design includes green roofing, luxurious amenities and a prime location near Jamaica Terminal, enhancing urban connectivity and community living.

SPECIAL PROJECTS > UP TO \$20 MILLION

**C** RODGERS BUILDERS INC.

**N** Sullenberger Aviation Museum

**L** Charlotte, North Carolina

**CO** Sullenberger Aviation Museum

**A** Progressive Cos.

**E** Progressive Cos.

The Sullenberger Aviation Museum project created two state-of-the-art buildings at Charlotte Douglas Airport. The 42,500-square-foot main gallery and 5,500-square-foot welcome center house iconic aircraft, like the Miracle on the Hudson plane, STEM programs and a makerspace, blending innovation, education and history.



SPECIAL PROJECTS > \$20 TO \$100 MILLION

**C** BRASFIELD & GORRIE

**N** North Carolina Hydropower Station Upstream Fish Passage

**L** Lilesville, North Carolina

**CO** Confidential

**E** Kleinschmidt

The North Carolina Hydropower Station Upstream Fish Passage is a unique, reinforced concrete passage with a lift tower and hopper elevator, aiding American Shad fish migration and spawning upstream of the hydrostation, effectively restoring historical fish populations.



# Pyramid Winners

## Specialty Contractors



### ELECTRICAL: COMMERCIAL > UP TO \$5 MILLION

- C** **HELIX ELECTRIC**
- N** Venetian Voltaire Theatre
- L** Las Vegas
- CO** Venetian Casino Resort LLC
- A** Moser Architecture Studio
- E** Bear Label
- GC** Whiting-Turner



### ELECTRICAL: COMMERCIAL > \$5 TO \$20 MILLION

- C** **ENTERPRISE ELECTRICAL**
- N** South Houston LPC
- L** Houston
- CO** Patriot Construction Management
- A** GDP Group
- E** GPD Group
- GC** Corvus Construction



### ELECTRICAL: INDUSTRIAL > UP TO \$5 MILLION

- C** **MMR CONSTRUCTORS INC.**
- N** ExxonMobil RGCU Compressor Upgrade
- L** Baton Rouge, Louisiana
- CO** ExxonMobil
- E** ExxonMobil



### ELECTRICAL: INDUSTRIAL > \$5 TO \$20 MILLION

- C** **TRIAD ELECTRIC & CONTROLS**
- N** Shintech CA3 Phase II Expansion Project
- L** Plaquemine, Louisiana
- CO** Shintech
- E** Shintech
- GC** Shintech



### ELECTRICAL > MORE THAN \$20 MILLION

- C** **INTERSTATES**
- N** Cargill Inc. Oilseed Processing Facility
- L** Sidney, Ohio
- CO** Cargill Inc.
- A** Jacobs
- E** Interstates

### EXTERIORS > EXTERIOR FINISHES

- C** **N-RG CLADDING LLC**
- N** Malachowsky Hall for Data Science & Information Technology
- L** Gainesville, Florida
- CO** The University of Florida Board of Trustees
- A** Bohlin Cywinski Jackson
- E** McClure Engineering
- GC** Ajax Building

### EXTERIORS > MASONRY, PRECAST OR STONE

- C** **GENCO MASONRY INC.**
- N** Sixth & I Synagogue Restoration
- L** Washington
- CO** Sixth & I
- A** Hartman-Cox Architects
- E** Simpson Gumpertz & Heger Inc.
- GC** Genco Masonry Inc.



### INTERIORS > ACOUSTICAL, DRYWALL, MILLWORK OR PLASTER

- C** **MAREK**
- N** San Antonio State Hospital
- L** San Antonio
- CO** Health and Human Services University of Texas Health Science Center at San Antonio
- A** HKS
- GC** Vaughn Construction



### MECHANICAL: COMMERCIAL > UP TO \$5 MILLION

- C** **HOMETOWN MECHANICAL**
- N** Stanley Center for Peace & Security
- L** Muscatine, Iowa
- CO** Stanley Center for Peace & Security
- A** Neumann Monson Architects
- E** Design Engineers
- GC** Graham Construction



MECHANICAL: COMMERCIAL > \$5 TO \$20 MILLION

**C EMCOR SERVICES NEW ENGLAND MECHANICAL**

- N** Hartford 21 Central Utility Plant
- L** Hartford, Connecticut
- CO** Northland Investments
- E** AHA Consulting Engineers Inc.
- GC** EMCOR Services New England Mechanical

MECHANICAL: INDUSTRIAL > UP TO \$2 MILLION

**C M&D MECHANICAL CONTRACTORS**

- N** OMCO Solar TI Process Water and Compressed Air Piping Systems
- L** Huntsville, Alabama
- CO** Omco Solar
- E** Olert Engineering



MECHANICAL: INDUSTRIAL > \$2 TO \$20 MILLION

**C M&D MECHANICAL CONTRACTORS**

- N** Polyplex USA Film Line Expansion
- L** Decatur, Alabama
- CO** Polyplex USA
- E** Gulf States Engineering
- GC** Fite Building Co.



MECHANICAL > MORE THAN \$20 MILLION

**C SPC MECHANICAL**

- N** Novant Health Forsyth Medical Center Chiller Generator Plant
- L** Winston-Salem, North Carolina
- CO** Novant Health Forsyth Medical Center
- GC** Vannoy Construction



SITework / LANDSCAPE / HARDSCAPE

**C CAJUN INDUSTRIES LLC**

- N** Enviva Epes Wood Pellet Facility Project
- L** Epes, Alabama
- CO** Enviva Pellets Epes LLC
- E** Kiewit Engineering Group Inc.

SPECIALTY CONSTRUCTION: COMMERCIAL > UP TO \$3 MILLION

**C HOLES INC.**

- N** Port of Galveston Cruise Terminal 25 Improvements
- L** Galveston, Texas
- CO** City of Galveston
- E** Jacobs

SPECIALTY CONSTRUCTION: COMMERCIAL > \$3 TO \$10 MILLION

**C MAC CONSTRUCTION & EXCAVATING INC.**

- N** New Albany River Recreation Site Phase 2
- L** New Albany, Indiana
- CO** City of New Albany
- E** HWC Engineering
- GC** MAC Construction & Excavating Inc.

SPECIALTY CONSTRUCTION: COMMERCIAL > MORE THAN \$10 MILLION

**C KLOVER INC.**

- N** Piazza Alta
- L** Philadelphia
- CO** Post Brothers
- A** BKV Group
- E** ADTEK
- GC** Post Brothers



SPECIALTY CONSTRUCTION: INDUSTRIAL > UP TO \$3 MILLION

**C TINY'S DEMOLITION & RECYCLING**

- N** Feintool
- L** Antioch, Tennessee
- CO** Feintool Tennessee Inc.
- A** STG Design Inc.
- GC** Crain Construction

# Pyramid Winners

## General Contractors

### SPECIALTY CONSTRUCTION: INDUSTRIAL > \$3 TO \$10 MILLION



- C CAJUN INDUSTRIES LLC**
- N** CF Industries CO2 Compression and Dehydration Piles
- L** Donaldsonville, Louisiana
- CO** CF Industries Carbon Capture D LLC
- E** CDI Engineering Solutions LLC

### SPECIALTY CONSTRUCTION: INDUSTRIAL > MORE THAN \$10 MILLION



- C GROUP CONTRACTORS LLC**
- N** Energy Transfer Partners/S&B Engineers and Constructors Flexport Project
- L** Nederland, Texas
- CO** S&B Engineers and Constructors
- E** S&B Engineers and Constructors
- GC** S&B Engineers and Constructors

### COMMERCIAL > UP TO \$10 MILLION



- C REGAL CONSTRUCTION LLC**
- N** Croatian Cultural Center
- L** Belle Chasse, Louisiana
- CO** Croatian American Society
- A** VergesRome Architects
- E** Morphy Makofsky Inc., Drake Engineering, Fairway Consulting and Engineering LLC

### COMMERCIAL > \$10 TO \$25 MILLION



- C BRASFIELD & GORRIE**
- N** Wicker Point Golf Club
- L** Alexander City, Alabama
- CO** Russell Lands on Lake Martin
- A** Henry Sprott Long & Associates

### COMMERCIAL > \$25 TO \$100 MILLION

- C B.W. KENNEDY & CO. LLC**
- N** Commonwealth Fusion Systems, CFS-1
- L** Devens, Massachusetts
- CO** King Street Properties
- A** Vivo Architecture Inc.
- E** Goldstein-Milano

### COMMERCIAL > \$100 TO \$250 MILLION



- C BRASFIELD & GORRIE**
- N** Bandwidth Inc. Headquarters
- L** Raleigh, North Carolina
- CO** Athens Development Partners
- A** Gensler
- E** Lynch Mykins Structural Engineers PC

### FEDERAL GOVERNMENT / MILITARY > UP TO \$15 MILLION



- C SR TRIDENT INC.**
- N** A.D. Powers Bayfront Park Seawall Restoration Project
- L** Seadrift, Texas
- CO** City of Seadrift
- E** G&W Engineers





FEDERAL GOVERNMENT / MILITARY >  
\$15 TO \$100 MILLION

**C THE HASKELL CO.**

- N** Fort Macon Hurricane Rebuild
- L** Atlantic Beach, North Carolina
- CO** USCG Norfolk
- A** Haskell
- E** Haskell



HISTORICAL RESTORATION / RENOVATION >  
UP TO \$15 MILLION

**C SOUTHCON BUILDING GROUP LLC**

- N** Boone Hall Plantation 1850s Cotton Gin House Renovation and Addition
- L** Mount Pleasant, South Carolina
- CO** Boone Hall LP
- A** Goff D’Antonio Associates
- E** DWG Engineering



HEALTH CARE > \$25 TO \$100 MILLION

**C BRASFIELD & GORRIE**

- N** FirstHealth Cancer Center
- L** Pinehurst, North Carolina
- CO** FirstHealth of the Carolinas
- A** Clark Patterson Lee
- E** Clark Patterson Lee



HEALTH CARE > \$100 TO \$250 MILLION

**C SR CONSTRUCTION INC.**

- N** West Henderson Hospital
- L** Henderson, Nevada
- CO** UHS of Delaware Inc.
- A** HDR Inc.
- E** Universal Engineering Sciences



HISTORICAL RESTORATION / RENOVATION >  
\$15 TO \$100 MILLION

**C GIBBS CONSTRUCTION LLC**

- N** Elijah Brimmer Jr. Building Repairs
- L** New Orleans
- CO** Orleans Parish School Board
- A** Mark I. Baum Architect LLC
- E** Lucien T. Vivien Jr. & Associates Inc. Consulting Engineers



INDUSTRIAL > UP TO \$10 MILLION

**C PERFORMANCE CONTRACTORS INC.**

- N** Exxon Baytown Olefins Plant 2X Furnace Retrofit TA Program
- L** Baytown, Texas
- CO** ExxonMobil Corp.



INDUSTRIAL > \$10 TO \$25 MILLION

**C PERFORMANCE CONTRACTORS INC.**

- N** Dow Project Pelican
- L** Plaquemine, Louisiana
- CO** Dow Chemical



# Pyramid Winners

## General Contractors



### INDUSTRIAL > \$25 TO \$50 MILLION

- C PERFORMANCE CONTRACTORS INC.**
- N** Dow Eagleray STG Project
- L** Plaquemine, Louisiana
- CO** DOW Chemical



### INDUSTRIAL > \$50 TO \$100 MILLION

- C FLINTCO LLC**
- N** American Airlines Turbine Engine Overhaul & Hangar 6 Central Utility Plant
- L** Tulsa, Oklahoma
- CO** American Airlines
- A** FSB Architects & Engineers
- E** FSB Architects & Engineers



### INDUSTRIAL > \$100 TO \$250 MILLION

- C CAJUN INDUSTRIES LLC**
- N** Louisiana Gulf Coast LNG-EPC GIS Buildings, Precast Pipe Bridge and Outfalls Project
- L** Louisiana Gulf Coast
- CO** Venture Global
- A** WDG Architects Engineers
- E** Cajun Engineering Solutions LLC



### INSTITUTIONAL > UP TO \$15 MILLION

- C ROGERS-O'BRIEN CONSTRUCTION**
- N** Baylor University Law School Renovations
- L** Waco, Texas
- CO** Baylor University
- A** SmithGroup
- E** SmithGroup

### INSTITUTIONAL > \$15 TO \$35 MILLION

- C MANHATTAN CONSTRUCTION CO.**
- N** Texas A&M University Bright Area Redevelopment and Kyle Field Luxury Suites
- L** College Station, Texas
- CO** Texas A&M University System
- A** Populous
- E** Walter P. Moore

### INSTITUTIONAL > \$35 TO \$100 MILLION

- C KITCHELL**
- N** University of Arizona Grand Challenges Research Building
- L** Tucson, Arizona
- CO** University of Arizona
- A** ZGF Architects LLP
- E** Affiliated Engineers Inc.



### INSTITUTIONAL > \$100 TO \$250 MILLION

- C HENSEL PHELPS**
- N** Colorado Convention Center Expansion
- L** Denver
- CO** City and County of Denver
- A** TVS Design
- E** Martin/Martin Engineers

### MEGAPROJECT > OVER \$250 MILLION

- C KITCHELL**
- N** Valleywise Health Medical Center
- L** Phoenix
- CO** Valleywise Health
- A** Cunningham Group Architecture Inc.
- E** Affiliated Engineers Inc.

### PUBLIC WORKS / ENVIRONMENTAL

- C JOHN T. JONES CONSTRUCTION CO.**
- N** South Sioux City Wastewater Treatment Facility Improvements
- L** South Sioux City, Nebraska
- CO** South Sioux City, Nebraska
- A** HDR Engineering
- E** HDR Engineering



### RENOVATION > UP TO \$5 MILLION

- C BRINDLEY CONSTRUCTION LLC**
- N** Pulaski Municipal Building Renovation
- L** Pulaski, Tennessee
- CO** City of Pulaski, Tennessee
- A** Lyle, Cook, Martin Architects
- E** Lyle, Cook, Martin Architects

# Pyramid Winners

## General Contractors

### RENOVATION > \$5 TO \$20 MILLION

- C KITCHELL**
- N** Phoenix Children’s Hospital NICU Buildout
- L** Phoenix
- CO** Phoenix Children’s Hospital
- A** HKS Inc.
- E** WSP

### SPECIAL PROJECTS > UP TO \$20 MILLION



- C ROGERS-O’BRIEN CONSTRUCTION**
- N** AMN Healthcare TI
- L** Dallas
- CO** Billingsley Co.
- A** O’Brien Architects
- E** Datum Engineers

### RESIDENTIAL > MULTI-FAMILY AND CONDOMINIUM UP TO \$100 MILLION



- C STONE BUILDING CO.**
- N** Livano Town Madison
- L** Madison, Alabama
- CO** LIV Development
- A** Nequette Architecture & Design
- E** Taylor & Viola Structural Engineers

### SPECIAL PROJECTS > \$20 TO \$100 MILLION

- C CORPORATE CONTRACTORS INC.**
- N** The Grain Mass Timber Development
- L** Delafield, Wisconsin
- CO** Hendricks Commercial Properties
- A** Johnson Design Inc.
- E** StructureCraft

**A Foundation of Health and Safety**

# 2024 NATIONAL SAFETY EXCELLENCE AWARD RECIPIENTS

From exceptional safety records to rigorous training and education programs, winners of the National Safety Excellence Awards excelled in all areas of ABC's STEP Safety Management System,<sup>®</sup> demonstrating an extraordinary commitment to industry-leading health and safety.

---

Presenting Sponsor



# Panel of Judges

**Michael W. Bennett**

Senior Executive Vice President  
The Cianbro Cos.  
Pittsfield, Maine

**John Bolt**

Senior Vice President, HSE  
S & B Engineers and Constructors Ltd.  
Houston

**Paul Crivac**

Director of Safety  
Three Rivers Corp.  
Midland, Michigan

**Charles E. Davis III**

Vice President, Operations/Risk  
Management  
Fly & Form Concrete Structures Inc.  
Atlanta

**Brian Fish**

General Superintendent  
Hensel Phelps Construction  
Tysons Corner, Virginia

**Phillip Ireland**

Director of Safety  
Benchmark Construction Co. Inc.  
Lancaster, Pennsylvania

**Melanie Laird**

Chief Strategy Officer  
Field Control Analytics  
Dallas

**Mark Lederer, MS, CSP, ARM, CRIS,  
ABCP**

Product/Industry Consulting Director –  
Construction  
CNA Risk Control  
Chicago

**Eric Simmons, Ed.D., PE**

Vice President of Risk Management  
Helix Electric  
San Diego

**Shelley Sutton, CSHO**

Vice President  
hth cos. inc.  
Union, Missouri

**James K. Thompson**

Director of EH&S  
Kwest Group LLC  
Perrysburg, Ohio

**Francisco Trujillo**

Executive Director of Risk Management  
Coakley & Williams Construction  
Bethesda, Maryland

# Pinnacle Winners

## NAICS 236 GENERAL CONTRACTORS

---



**AUSTIN COMMERCIAL LP**  
Dallas



**EBCO GENERAL CONTRACTOR LTD.**  
Cameron, Texas



**FLINTCO LLC**  
Tulsa, Oklahoma



**HASKELL**  
Jacksonville, Florida



**HENSEL PHELPS**  
Greeley, Colorado

**PACIFIC RIM CONSTRUCTORS INC.**  
Tamuning, Guam



**ROY ANDERSON CORP.**  
Gulfport, Mississippi



**SAMET CORP.**  
Greensboro, North Carolina



**SDV CONSTRUCTION INC.**  
Albuquerque, New Mexico



**STELLAR GROUP INC.**  
Jacksonville, Florida



**THREE RIVERS CORP.**  
Midland, Michigan

**NAICS 237**

HEAVY AND CIVIL  
ENGINEERING CONTRACTORS

---



**BROWN & ROOT INDUSTRIAL SERVICES LLC**  
Baton Rouge, Louisiana



**S&B ENGINEERS AND CONSTRUCTORS LTD.**  
Houston



**THE CIANBRO COS.**  
Pittsfield, Maine

**NAICS 238**

SPECIALTY CONTRACTORS

---



**GAYLOR ELECTRIC**  
Indianapolis



**HELIX ELECTRIC**  
San Diego



**HTH COS. INC.**  
Union, Missouri



**KWEST GROUP**  
Perrysburg, Ohio



**METROPOWER INC.**  
Tucker, Georgia

# Excellence Winners

## NAICS 236 GENERAL CONTRACTORS

---



**CADENCE MCSHANE  
CONSTRUCTION CO. LLC**  
Addison, Texas



**CMS CORP.**  
Bargersville, Indiana



**COAKLEY & WILLIAMS  
CONSTRUCTION**  
Bethesda, Maryland



**COMPETITIVE EDGE PARTNERS  
& CONSULTING LLC**  
Altamonte Springs, Florida



**CORE TECH INTERNATIONAL**  
Tamuning, Guam



**CSM GROUP**  
Kalamazoo, Michigan

**SATTERFIELD & PONTIKES  
CONSTRUCTION**  
Houston



**SEVAN MULTI-SITE SOLUTIONS**  
Downers Grove, Illinois

**SPAWGLASS CONTRACTORS INC.**  
Fort Worth, Texas



**TOLM GROUP**  
Morrilton, Arkansas

## NAICS 237 HEAVY AND CIVIL ENGINEERING CONTRACTORS

---



**BARRIERE CONSTRUCTION — A CRH CO.**  
LaPlace, Louisiana

## NAICS 238 SPECIALTY CONTRACTORS

---

**APACHE INDUSTRIAL SERVICES**  
Houston

**LPR CONSTRUCTION CO.**  
Loveland, Colorado



**POLK MECHANICAL LLC**  
Grand Prairie, Texas



**TDINDUSTRIES INC.**  
Dallas



**THOMPSON ENGINEERING INC.**  
Mobile, Alabama



# Merit Winners

## NAICS 236 GENERAL CONTRACTORS

---

- **ALLIANCE INDUSTRIAL GROUP LLC**  
Lumberton, Texas
- **BLACK CONSTRUCTION CORP.**  
Tamuning, Guam
- **BORDEAUX CONSTRUCTION CO. INC.**  
Morrisville, North Carolina
- **HENLEY CONSTRUCTION CO. INC.**  
Gaithersburg, Maryland
- **W. G. YATES & SONS CONSTRUCTION CO.**  
Birmingham, Alabama
- **WHITE-SPUNNER CONSTRUCTION LLC**  
Mobile, Alabama

## NAICS 237 HEAVY AND CIVIL ENGINEERING CONTRACTORS

---

- **PERFORMANCE CONTRACTORS INC.**  
Baton Rouge, Louisiana
- **RES CONTRACTORS LLC**  
Plattenville, Louisiana
- **SR TRIDENT INC.**  
Corpus Christi, Texas

## NAICS 238 SPECIALTY CONTRACTORS

---

- **CANTERA CONCRETE CO. LLC**  
Tulsa, Oklahoma
- **CUMMINGS ELECTRICAL LP**  
Fort Worth, Texas
- **JAMES LANE MECHANICAL**  
Wichita Falls, Texas
- **M. DAVIS & SONS INC.**  
Kennett Square, Pennsylvania
- **MMR CONSTRUCTORS INC.**  
Baton Rouge, Louisiana
- **PACIFIC FEDERAL  
MANAGEMENT INC.**  
Tumon, Guam
- **RK INDUSTRIES LLC**  
Albuquerque, New Mexico
- **TUSCO INC.**  
Cottondale, Alabama

## **Championing an Inclusive, Diverse and Meritocratic Industry**

# 2024 NATIONAL INCLUSION, DIVERSITY AND MERIT EXCELLENCE AWARD RECIPIENTS

The ABC National Inclusion, Diversity and Merit Excellence Awards recognize members that display exemplary inclusion, diversity and meritocratic leadership in their workforce, supply chain and community with best-in-class recruitment policies, retention practices and education and mentoring programs.

# Panel of Judges

**Yolanda M. Baber**

Vice President of Strategic Initiatives  
and Business Development  
JGM  
Los Angeles

**Angela Gardner**

Director of Business Development  
and Marketing  
Hill Electric Co.  
Anderson, South Carolina

**Chris R. Martinez**

President  
Central Electric Ent. & Co.  
San Antonio

**Tia Perry**

Executive Director  
AEC Unites  
Washington

**Christi Powell**

Women Business Enterprise Division  
84 Lumber Co.  
Eighty Four, Pennsylvania

## Winners

### ASSOCIATE/SUPPLIER

**ATKINSON, ANDELSON, LOYA, RUUD & ROMO**

Cerritos, California

### GENERAL CONTRACTOR

(Over \$33 million)



**HENSEL PHELPS CONSTRUCTION CO.**

Greeley, Colorado

### GENERAL CONTRACTOR

(Under \$33 million)

**TERRASMART**

Cincinnati

### SUBCONTRACTOR



**METROPOWER INC.**

Tucker, Georgia

2025  
CONTRACTOR  
OF THE YEAR

**GAYLOR**  
*ELECTRIC*

---

Presenting Co-Sponsors

**CNA**



# Gaylor Electric: Wired Differently

The ABC 2025 Contractor of the Year is Gaylor Electric—a design-build electrical contractor and 24/7 electrical support and utility service provider based in Indianapolis that does nearly \$1 billion in annual business. As Contractor of the Year, Gaylor stands steadfast in its commitment to ABC’s mission and values, including safety, quality, workforce development, community engagement, advocacy and the merit shop philosophy. It is the first company in ABC’s 75-year history to have earned the award twice.

Gaylor was founded in 1984 by John Gaylor, who recognized the need for an electrical contractor that encouraged open competition and a free enterprise approach to construction based on merit. His determination to provide top-notch performance for clients and build a reputation as an employer of choice laid the foundation for what became Gaylor Electric.

Today, Gaylor has a workforce of approximately 3,500 employees spread across 16 offices in seven states. It is consistently ranked among the top national construction industry leaders and serves several high-profile clients including Amazon, Nike, GE, Starbucks and Hyatt. Whether working on small, fast-paced builds or multi-million-dollar, multi-year projects, Gaylor’s commitment to developing strong business relationships keeps clients coming back time and time again.

The secret to all that success? For Gaylor, it’s putting its people first—and a firm belief that individual strengths brought together, result in exceptional outcomes. Gaylor empowers each of its project teams to make decisions based on the unique strengths of its members, creating a culture where all opinions—top-down and bottom-up—are voiced and valued. The company is committed to providing continuous educational opportunities through Gaylor University, an internal learning platform containing hundreds of courses on everything from electrical skills and leadership development to personal finance management and total human health.

“Education is the key to making everybody in your organization better,” says CEO Chuck Goodrich. “And of course, when the people get better, the company gets better.”

The results speak for themselves. Gaylor is an ABC Top Performer, an ABC Accredited Quality Contractor and has achieved the highest level in ABC’s STEP Safety Management System,<sup>®</sup> Diamond. The company has won numerous ABC National Excellence in Construction<sup>®</sup> Awards and National Safety Excellence Awards. Goodrich served as chair of the ABC National Board of Directors in 2016. The company has also produced several ABC Construction Workforce Award winners—including the Young Professional of the Year, Craft Professional of the Year and Craft Instructor of the Year.

With a track record like that, it’s hard to imagine what Gaylor could do with another 40 years in business. But ask Goodrich, and he’ll tell you: Gaylor is just getting started.



INDEX OF ALL WINNERS

Aggregate Technologies Inc.	8	Klover Inc.	21
Alliance Industrial Group LLC	31	Kwest Group	8, 9, 29
Apache Industrial Services	30	LPR Construction Co.	30
Atkinson, Andelson, Loya, Ruud & Romo	33	M&D Mechanical Contractors	7, 21
Austin Commercial LP	28	M. Davis & Sons Inc.	31
B.W. Kennedy & Co. LLC	22	MAC Construction & Excavating Inc.	21
Baker Concrete Construction Inc.	9	Manhattan Construction Co.	11, 24
Barriere Construction — A CRH Co.	30	MAREK	20
BL Harbert International LLC	12	Methuen Construction Co. Inc.	17
Black Construction Corp.	31	MetroPower Inc.	29, 33
Bordeaux Construction Co. Inc.	14, 31	MMR Constructors Inc.	20, 31
Bouma Corp.	6	Moore Industries LLC	5, 7, 11
Brasfield & Gorrie	19, 22, 23	N-RG Cladding LLC	20
Brindley Construction LLC	24	Pacific Federal Management Inc.	31
Brown & Root Industrial Services LLC	29	Pacific Rim Constructors Inc.	28
C. Raymond Davis & Sons Inc.	18	Performance Contractors Inc.	14, 15, 23, 24, 31
Cadence McShane Construction Co. LLC	30	Polk Mechanical LLC	30
Cajun Industries LLC	14, 21, 22, 24	Quandel Enterprises LLC	12
Cantera Concrete Co. LLC	31	R.C. Mathews Contractor	16
Capital Industries LLC	6	Regal Construction LLC	22
CarolinaPower	4	RES Contractors LLC	31
Cianbro Corp.	15, 29	RK Industries LLC	31
Clark Construction	23	Rodgers Builders Inc.	19
CMS Corp.	30	Rogers-O'Brien Construction	24, 25
Coakley & Williams Construction	30	Roy Anderson Corp.	28
Competitive Edge Partners & Consulting LLC	30	Rudick Construction Group	10
Core Tech International	30	S&B Engineers and Constructors Ltd.	29
Corporate Contractors Inc.	25	Samet Corp.	28
CSM Group	30	Satterfield & Pontikes Construction	10, 16, 30
Cummings Electrical LP	31	SDV Construction Inc.	28
DonahueFavret Contractors Inc.	16	Sevan Multi-Site Solutions	30
Dunhill Development and Construction LLC	13	Skanska USA Building Inc.	13
EBCO General Contractor Ltd.	28	Skycore Builders Inc.	19
EMCOR Services New England Mechanical	21	SouthCon Building Group LLC	23
Enterprise Electrical	20	SpawGlass Contractors Inc.	30
EXCEL Group	15	SPC Mechanical	21
Flintco LLC	24, 28	SR Construction Inc.	23
Gaylor Electric	29, 34, 35	SR Trident Inc.	22, 31
Genco Masonry Inc.	20	Starr Electric Co. Inc.	4
Gibbs Construction LLC	23	Stellar Group Inc.	28
Global Pacific Design Builders LLC	18	Stone Building Co.	25
GROUP Contractors LLC	18, 22	T.W. Frierson Contractor Inc.	11, 17
Haskell	28	TDIndustries Inc.	7, 30
Helix Electric	20, 29	Telligent Masonry LLC	6
Henley Construction Co. Inc.	31	Terrasmart	33
Hensel Phelps	17, 24, 28, 33	The Haskell Co.	23
Holes Inc.	21	Thompson Engineering Inc.	30
Hometown Mechanical	20	Three Rivers Corp.	28
hth cos. inc.	29	Tiny's Demolition & Recycling	21
I&I Soft Craft Solutions	9	TOLM Group	30
Interstates	20	Triad Electric & Controls	4, 5, 20
ISC Constructors LLC	5	Tusco Inc.	31
James Lane Mechanical	31	W. G. Yates & Sons Construction Co.	31
JCCBG, Jordon Construction Co. and Brasfield & Gorrie	12	White Construction	13
John T. Jones Construction Co.	24	White-Spunner Construction LLC	31
Kaplan Construction	10	Worth & Co. Inc.	8
Kitchell	23, 24, 25		

# Thank You to Our Program Sponsors

---

National Excellence in Construction® Awards  
Program Sponsor

---



---

National Safety Excellence Awards  
Presenting Sponsor

---



---

National Contractor of the Year  
Presenting Co-Sponsors

---





440 First St. NW, Suite 200  
Washington, DC 20001  
(202) 595-1505  
[abc.org](http://abc.org)

**#ABCMeritShopProud**  
**@ABCNational**