



**ARC**<sup>TM</sup>  
ARCHITECTURAL  
RESOURCE CONSULTANTS

*Defining Reality*



## BIM and Laser Scanning Save Time and Reduce Risk

***John M. Russo, AIA***

*President & CEO, Architectural Resource Consultants (ARC)*

*President, U.S. Institute of Building Documentation (USIBD)*

*john.russo@arc-corporate.com*

*888.362.4272 x101*



# Introduction

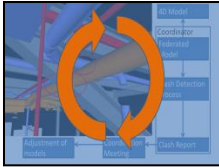
- ARC specializes in documentation of the built environment.
- Serve AECO Markets
- Since 1997
- Operate nationally:
  - Locations in Irvine, CA and Charlotte, NC
  - Extensive network of partners
- 2D, 3D, Laser Scanning, Advanced Imagery



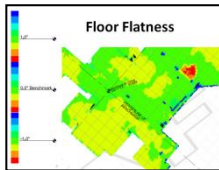
# Learning Objectives

- Learn how contractors are using BIM to coordinate trades
- Gain a basic understanding of Laser Scanning
- Understand how scanning is being used to capture Architectural / Structural systems
- Learn three processes being used to cut time and risk

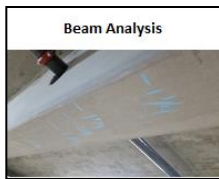
# Overview



Trade Coordination



Floor Flatness



Beam Analysis



**ARC**<sup>TM</sup>  
ARCHITECTURAL  
RESOURCE CONSULTANTS

*Defining Reality*



## Inquiries

Robert Blum  
Director of Business  
Development  
(704) 651-7552

robert.blum@arc-corporate.com  
www.arc-corporate.com

# Construction

**John M. Russo, AIA**

*President & CEO, Architectural Resource Consultants (ARC)*  
*President, U.S. Institute of Building Documentation (USIBD)*  
*john.russo@arc-corporate.com*  
*888.362.4272 x101*

