



23rd Annual Excellence in Construction Awards

A Celebration of Outstanding
Construction Projects, Safety
Performances and Diversity
Programs

Feb. 20, 2013
Harbor Beach Marriott Resort
Fort Lauderdale, Fla.





PAGE 2

National Excellence In Construction Awards

PANEL OF JUDGES / 3

PAGE 4

Eagle Winners

SPECIALTY CONTRACTOR CATEGORIES / 4

ELECTRICAL / 4

EXTERIORS / 5

INTERIORS / 6

MECHANICAL / 6

OTHER SPECIALTY CONSTRUCTION / 7

SITework/LANDSCAPE / 8

GENERAL CONTRACTOR/CONSTRUCTION MANAGEMENT CATEGORIES / 9

COMMERCIAL / 9

COMMUNITY/PUBLIC SERVICE / 10

FEDERAL GOVERNMENT/MILITARY / 10

HEALTHCARE / 11

HISTORICAL RESTORATION/RENOVATION / 12

INDUSTRIAL / 12

INFRASTRUCTURE/HEAVY / 13

INSTITUTIONAL / 13

OTHER CONSTRUCTION / 14

PRE-ENGINEERED BUILDING / 15

PUBLIC WORKS/ENVIRONMENTAL / 15

RENOVATION / 16

RESIDENTIAL / 17

MEGA-PROJECTS / 17

PAGE 18

Pyramid Winners

SPECIALTY CONTRACTOR CATEGORIES / 18

GENERAL CONTRACTOR/CONSTRUCTION MANAGEMENT CATEGORIES / 20

PAGE 22

National Safety Excellence Awards

PANEL OF JUDGES / 23

PAGE 24

Pinnacle Winners

PAGE 24

Excellence Winners

GENERAL CONTRACTOR / 24

HEAVY AND CIVIL ENGINEERING CONTRACTOR / 24

SPECIALTY CONTRACTOR / 24

PAGE 25

Merit Winners

GENERAL CONTRACTOR / 25

HEAVY AND CIVIL ENGINEERING CONTRACTOR / 25

SPECIALTY CONTRACTOR / 25

PAGE 26

National Diversity Excellence Awards

PANEL OF JUDGES / 27

ASSOCIATE / 27

SUPPLIER / 27

SUBCONTRACTOR / 27

GENERAL CONTRACTOR / 27

PAGE 28

Contractor of the Year Award

PAGE 29

2012 STEP DIAMOND RECIPIENTS

PAGE 30

INDEX OF ALL WINNERS

PAGE 32

PROGRAM SPONSORS

Building Excellence from the Ground Up

2012 EXCELLENCE IN CONSTRUCTION AWARD RECIPIENTS

The Excellence in Construction Awards honor the skill and creativity of the entire team—contractor, owner, architect and engineer—responsible for an outstanding merit shop construction project. The 2012 award recipients exceeded expectations in innovation and quality.

Panel of Judges

RICHARD BELLE

President

Belle Communications, LLC
Bethesda, Md.

SAM CARRADINE

Development and Diversity Consultant
The Surety & Fidelity Association of America
Washington, D.C.

PATRICK L. GLON, P.E.

*Professor Emeritus, Department
of Building Construction Management*
Purdue University
South Bend, Ind.

RICHARD HAYES

Director, Knowledge Resources
The American Institute of Architects
Washington, D.C.

SUSAN HINES

Director, Public Relations and Information
Design-Build Institute of America
Washington, D.C.

DEDE HUGHES

Executive Vice President
National Association of
Women in Construction
Fort Worth, Texas

JJ MCCARTHY, LEED AP, GAC, AIC

Principal
JJMC, LLC
Rockville, Md.

JASON ROBERTSON

Director, Business Development
CRB Engineers
Kansas City, Mo.

J. MARK TAYLOR, PHD, JD

*Associate Professor,
McWhorter School of Building Science*
Auburn University
Auburn, Ala.

ANDREW WRIGHT

Managing Senior Editor
ENR.com
New York, N.Y.

Eagle Winners

Specialty Contractor Categories

ELECTRICAL-COMMERCIAL LESS THAN \$5 MILLION

HELIX ELECTRIC, INC. **C**

Kapolei Sustainable Energy Park **N**
Kapolei, Hawaii **L**
Forest City Sustainable Resources **CO**
Morikawa & Associates, LLC **E**
Hoku Solar, Inc. **GC**

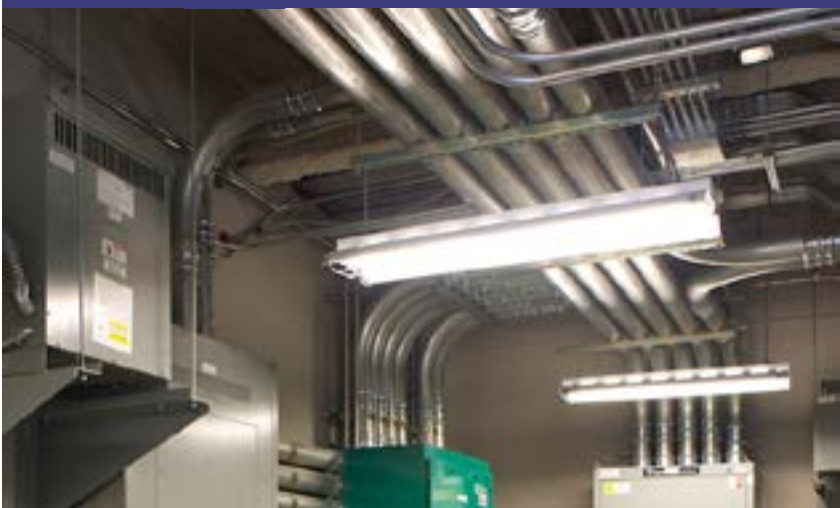


Helix Electric worked on the Kapolei Sustainable Energy Park—the first solar installation of its kind on the island of Oahu—which generates enough energy each year to supply 150 to 250 homes.

ELECTRICAL-COMMERCIAL \$5-10 MILLION

STARR ELECTRIC COMPANY, INC. **C**

Wake Forest Biotech Place **N**
Winston-Salem, N.C. **L**
Wexford Science + Technology, LLC **CO**
Gaudreau, Inc. **A**
Kibart Inc. **E**



Starr Electric installed transformers, amp services, light fixtures and generators to transform two run-down buildings into one state-of-the-art biotechnology research center for Wake Forest.

ELECTRICAL-INDUSTRIAL LESS THAN \$2 MILLION

ISC CONSTRUCTORS, L.L.C. **C**

Styrene Purification "A", Multi-Effect Distillation Project **N**
Carville, La. **L**
Total Petrochemicals & Refining USA, Inc. **CO**
Shaw Energy & Chemicals, Inc. **E**



ISC Constructors completed the on-time installation of energy-efficient electrical and instrumentation systems despite the fact that a barge carrying the 250-pound vessel accounting for more than 60 percent of the contracted scope was delayed by floodwaters.

Eagle Winners

Specialty Contractor Categories



ELECTRICAL-INDUSTRIAL \$2-10 MILLION

- C** **ISC CONSTRUCTORS, L.L.C.**
- N** EO2 Strategic Projects
- L** Geismar, La.
- CO** Shell Chemical, L.P.
- E** Jacobs Engineering Group Inc.
- GC** Jacobs Field Services North America, Inc.

ISC Constructors met all deadlines on budget and without a single recordable injury to complete the upgrade to one of Shell's primary facilities that produces the organic compound, ethylene oxide.



ELECTRICAL PROJECTS MORE THAN \$10 MILLION

- C** **INTERSTATES COMPANIES**
- N** Northstar Agri Industries Canola Crushing Facility
- L** Hallock, Minn.
- CO** Northstar Agri Industries
- E** Interstates Companies / Karges-Faulconbridge, Inc.

Interstates performed a design-build package—including electrical engineering, field construction, instrumentation and plant automation systems—for the nation's first purpose-built canola processing facility.



EXTERIORS

- C** **KPOST COMPANY**
- N** Omni Dallas Convention Center Hotel
- L** Dallas, Texas
- CO** Dallas Convention Center Hotel Development Corporation
- A** BOKA Powell, LLC
- GC** Balfour Beatty Construction

KPost successfully completed 10 roofing and building envelope systems in three primary areas of the 23-story Omni Dallas Convention Center Hotel—the equivalent of 23 unique roof assemblies.

Eagle Winners

Specialty Contractor
Categories

INTERIORS

LASCO ACOUSTICS AND DRYWALL, INC. **C**
Irving Convention Center **N**
Irving, Texas **L**
City of Irving **CO**
RMJM Hillier **A**
Datum Engineers, Inc. **E**
Austin Commercial **GC**



This LEED Silver convention center's angles, slopes and high ceilings required precision and innovation from LASCO during the 13-month project, which finished ahead of schedule.

MECHANICAL-COMMERCIAL LESS THAN \$2 MILLION

TDINDUSTRIES, INC. **C**
Botanical Research Institute of Texas **N**
Fort Worth, Texas **L**
Botanical Research Institute of Texas **CO**
The Beck Group **A**
Summit Consultants, Inc. **E**
The Beck Group **GC**



TDIndustries performed mechanical and plumbing work on this two-story, LEED Platinum office building, resulting in an estimated 50 percent reduction in energy consumption.

MECHANICAL-COMMERCIAL \$2-10 MILLION

BROCKWAY MECHANICAL & ROOFING COMPANY, INC. **C**
Grand Falls Casino Resort **N**
Larchwood, Iowa **L**
Grand Falls Casino Resort **CO**
DLR Group KKE **AE**



A BIM program that could be accessed by field leadership on company-issued iPads encouraged collaboration and helped Brockway finish this casino project early and under budget.

Eagle Winners

Specialty Contractor Categories



MECHANICAL-INDUSTRIAL LESS THAN \$10 MILLION

- C** EXCEL-SUN
- N** St. Thomas Emergency Water Project
- L** St. Thomas, U.S. Virgin Islands
- CO** Seven Seas Water Corporation
- E** Seven Seas Water Corporation

After an emergency system failure created critical water shortages in St. Thomas, EXCEL-SUN implemented three phases to put the units back online in less than 12 weeks.



MECHANICAL PROJECTS MORE THAN \$10 MILLION

- C** ACI MECHANICAL, INC.
- N** Emergency Re-route of Chilled Water Lines
- L** Houston, Texas
- CO** George Bush Intercontinental Airport
- AE** USA Shelco, Inc.

ACI Mechanical successfully re-routed chilled waterlines at George Bush Intercontinental Airport after a 10,000 gallon-per-day leak was discovered in its underground distribution system.



OTHER SPECIALTY CONSTRUCTION LESS THAN \$1 MILLION

- C** KWEST GROUP, LLC
- N** Reconstruct Rodriguez Firing Range Berm
- L** Port Clinton, Ohio
- CO** Ohio National Guard
- E** TolTest, Inc.

Kwest completed the reconstruction of a 100-year-old firing range berm ahead of schedule even though work began during one of the wettest periods on record in Northern Ohio, leading to critical path activity delays.

Eagle Winners

Specialty Contractor Categories

OTHER SPECIALTY CONSTRUCTION MORE THAN \$1 MILLION

- EXCEL FABRICATION & CONSTRUCTION, INC.** **C**
Valero HCU Off-Module Piping Project **N**
Norco, La. **L**
Valero Refining - New Orleans, L.L.C. **CO**
Richard Design Services, Inc. **E**



EXCEL worked 24 hours a day, seven days a week for five months to meet the client's stringent requirements for pipe fabrication, using some pieces that weighed more than 25,000 pounds.

SITework/LANDSCAPE/HARDSCAPE ALL CONTRACT AMOUNTS

- DURR HEAVY CONSTRUCTION** **C**
L'Auberge Casino & Hotel **N**
Baton Rouge, La. **L**
Pinnacle Entertainment **CO**
Manning Architects **A**
ABMB Engineers, Inc. **E**
Manhattan Construction **GC**



Durr was contracted to excavate the side of a levee along the Mississippi River to provide an enclosure for this floating casino, with river elevations reaching record highs twice during the project.

Eagle Winners

General Contractor/
Construction
Management
Categories



In this LEED Gold fire station located in a busy residential area, Synergy incorporated geothermal walls that extend 300 feet below the building to provide a more comfortable living area while remaining energy efficient.

COMMERCIAL - LESS THAN \$5 MILLION

- C** **SYNERGY CONSTRUCTION, INC.**
- N** Fire Station #30
- L** Seattle, Wash.
- CO** City of Seattle Fleets and Services
- A** Shacht Aslani Architects
- E** Engineering Economics, Inc.



With collaboration from all parties, Haskell designed and built a 33,455-square-foot, LEED Silver headquarters for NCCER featuring cutting-edge technology and high-efficiency energy systems.

COMMERCIAL - \$5-10 MILLION

- C** **THE HASKELL COMPANY**
- N** NCCER Headquarters Building
- L** Alachua, Fla.
- CO** NCCER
- AE** The Haskell Company



When multiple underground fuel tanks and inactive cisterns were discovered during demolition, SpawGlass moved quickly to prevent any major impacts on the deadline to complete this urban transportation hub.

COMMERCIAL - \$10-25 MILLION

- C** **SPAWGLASS**
- N** La Plaza at Brownsville Multimodal Terminal
- L** Brownsville, Texas
- CO** The City of Brownsville
- A** Jacobs Global Buildings

Eagle Winners

General Contractor/
Construction
Management
Categories

COMMERCIAL - \$25-100 MILLION

HARVEY-CLEARY BUILDERS **C**

Cirrus Logic Corporate Headquarters **N**
Austin, Texas **L**
Cirrus Logic, Inc. **CO**
House + Partners, Architecture & Planning, LLP /
lauckgroup / Muñoz + Albin Architecture & Planning, Inc. **A**
Haynes Whaley Associates, Inc. **E**



Tight site conditions on this six-story office building with a connected eight-story parking garage required Harvey-Cleary to schedule and stage lot-line to lot-line concrete pours in a busy downtown residential area.

COMMUNITY/PUBLIC SERVICE

ROCHE CONSTRUCTORS, INC. **C**

Patrick B. Roche Memorial Baseball Training **N**
Facility for Kids Remodel **L**
Greeley, Colo. **CO**
Patrick B. Roche Memorial Fund Foundation **E**
EMC Engineers, Inc.



Roche donated resources and devised innovative ways to reduce costs while renovating this children's baseball training facility, giving the community an improved building that meets LEED Gold certification requirements.

FEDERAL GOVERNMENT/MILITARY LESS THAN \$10 MILLION

BRASFIELD & GORRIE, LLC **C**

North Troop Medical Clinic **N**
Fort Stewart, Ga. **L**
U.S. Army Corps of Engineers **CO**
Wakefield Beasley & Associates **A**
Greenhorne & O'Mara, Inc. **E**



Brasfield & Gorrie earned three consecutive quarterly safety awards from the U.S. Army Corps of Engineers for its work on this 39,000-square-foot medical facility that serves soldiers returning from combat.

Eagle Winners

General Contractor/
Construction
Management
Categories



Caddell and Clark took a cooperative design-build approach to safely complete this LEED Gold barracks facility for wounded soldiers, who now have access to a wheelchair exercise course.

FEDERAL GOVERNMENT/MILITARY \$10-100 MILLION

- C** **CLARK CADDELL A JOINT VENTURE**
- N** Design/Build Warrior in Transition Barracks
- L** Fort Stewart, Ga.
- CO** U.S. Army Corps of Engineers, Savannah District
- AE** LS3P ASSOCIATES LTD.



Despite a one-month schedule delay caused by a direct tornado hit, Brasfield & Gorrie completed this two-story, 34,238-square-foot health care facility on time thanks to careful planning.

HEALTHCARE - LESS THAN \$10 MILLION

- C** **BRASFIELD & GORRIE, LLC**
- N** Rex Healthcare of Holly Springs
- L** Holly Springs, N.C.
- CO** Duke Realty Healthcare
- A** BJAC pa
- E** RDK Engineers



HITT converted a 200,000-square-foot office building into a state-of-the-art medical center, following an aggressive schedule that entailed workflow changes and installing a 10,000-pound MRI through a window.

HEALTHCARE - \$25-100 MILLION

- C** **HITT CONTRACTING INC.**
- N** Kaiser Permanente Gaithersburg Medical Center
- L** Gaithersburg, Md.
- CO** Kaiser Foundation Health Plan of the Mid-Atlantic States
- AE** Ellerbe Becket, an AECOM Company

Eagle Winners

General Contractor/
Construction
Management
Categories

HISTORICAL RESTORATION/ RENOVATION - LESS THAN \$25 MILLION

SPAWGLASS **C**

St. Louis Renovation, St. Mary's University **N**
San Antonio, Texas **L**
St. Mary's University **CO**
RVK Architects **A**



SpawGlass' renovation of the four-story St. Louis Hall, built in 1893, included adding a central HVAC system, repairing and replacing damaged woodwork, and lowering floors by chipping out concrete piece by piece.

INDUSTRIAL - \$10-25 MILLION

TURNER INDUSTRIES GROUP, L.L.C. **C**

Total Petrochemicals Expansion **N**
Carville, La. **L**
Total Petrochemicals & Refining USA, Inc. **CO**
The Shaw Group Inc. **AE**



In order to keep this petrochemical plant's outage to just 28 days, Turner Industries completed pre-assembly of major process structures at an adjacent site during demolition of the existing equipment and piping.

INDUSTRIAL - \$25-100 MILLION

PERFORMANCE CONTRACTORS, INC. **C**

Pandora Ammonia/Methanol Turnaround **N**
Beaumont, Texas **L**
OCI Beaumont, LLC **CO**
OCI Beaumont, LLC **E**



After discovering the scope of the project was much larger than planned, Performance Contractors' responsibilities for this \$84 million project expanded to providing the logistics, equipment and fuel for the entire site.

Eagle Winners

General Contractor/
Construction
Management
Categories



INFRASTRUCTURE: HEAVY ALL CONTRACT AMOUNTS

- C** **GROUP CONTRACTORS, LLC**
- N** Shredder Facility Dock for EMR-Southern Recycling
- L** New Orleans, La.
- CO** EMR-Southern Recycling
- E** Ragland, Alderman & Associates, Inc.

GROUP determined a way to work from land rather than via barges while building this 984-foot-long by 30-foot-wide concrete dock, which gave crews better access to the site and saved the client \$260,000 in operating costs.



INSTITUTIONAL - LESS THAN \$5 MILLION

- C** **BRINDLEY CONSTRUCTION, LLC**
- N** South Central Tennessee Development District
Administrative Office
- L** Mt. Pleasant, Tenn.
- CO** South Central Tennessee Development District
- A** L. Hughes Associates, Architect
- E** Littlejohn Engineering Associates

Brindley Construction overcame unexpected soil conditions and abnormally harsh winter weather while constructing this 12,900-square-foot office building.



INSTITUTIONAL - \$5-10 MILLION

- C** **SPAWGLASS**
- N** Robert B. Buchanan Fine Arts Facility
- L** Brownsville, Texas
- CO** Brownsville Independent School District
- A** ERO Architects
- E** Hinojosa Engineering, Inc.

Architecture students were regular jobsite visitors while SpawGlass worked toward an on-time completion of this high school's new fine arts facility, which features an auditorium with acoustical ceiling and wall panels.

Eagle Winners

General Contractor/
Construction
Management
Categories

INSTITUTIONAL - \$10-25 MILLION

BALFOUR BEATTY CONSTRUCTION **C**

Florida Atlantic University HBOI Research Laboratory **N**
Building II **L**
Fort Pierce, Fla. **L**
Florida Atlantic University **CO**
PGAL **A**
TLC Engineering for Architecture **E**



Balfour Beatty used value analysis to allow an additional 7,000 square feet to be incorporated into this premier marine research facility, which includes laboratories, fume hoods, wet lab infrastructure, and support and office space.

INSTITUTIONAL - \$25-100 MILLION

CUMMINGS-BALFOUR BEATTY, A JOINT VENTURE **C**

Florida Atlantic University Football Stadium **N**
Boca Raton, Fla. **L**
Florida Atlantic University **CO**
HKS, Inc. **A**
Smith Seckman Reid, Inc. / **E**
Walter P Moore / Miller Legg

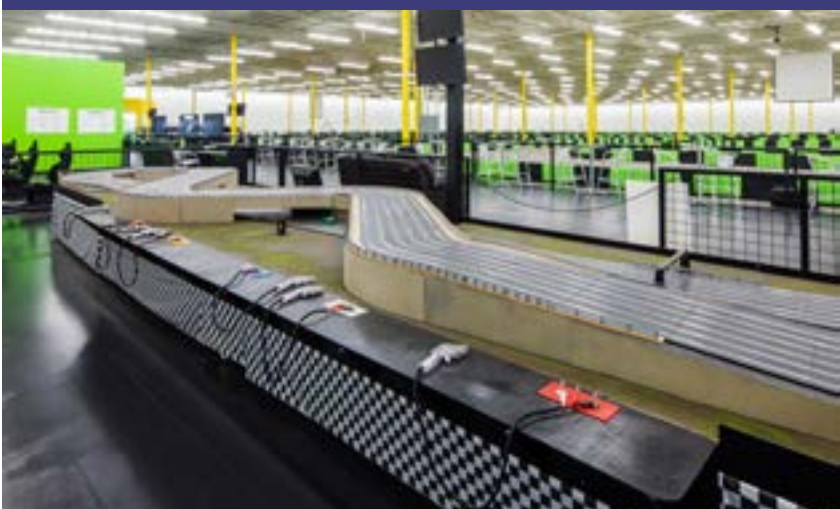


This joint venture relied on teamwork to complete a football stadium on time and within budget despite a seven-month schedule reduction and a complete redesign.

OTHER CONSTRUCTION LESS THAN \$2 MILLION

GORSKI ENGINEERING, INC. **C**

Speed Raceway **N**
Horsham, Pa. **L**
Speed Raceway WG, LP **CO**



In just 12 weeks, Gorski Engineering converted a 105,000-square-foot commercial building into an entertainment venue that includes two quarter-mile racetracks for electric carts.

Eagle Winners

General Contractor/
Construction
Management
Categories



Flintco demolished an existing exhibit to make room for a new underwater tunnel, spectator stands and 100,000-gallon tank that houses five sea lions.

OTHER CONSTRUCTION \$2-100 MILLION

- C** **FLINTCO, LLC**
- N** Tulsa Zoo Helmerich Sea Lion Cove
- L** Tulsa, Okla.
- CO** Tulsa Zoo Management, Inc.
- A** Dewberry Architects
- E** Alvine Engineering



After a fire destroyed the Cargill Feed Mill, Keystruct worked to rebuild the 90,750-square-foot facility with interior structures that double the mill's production volume while preventing future fire hazards.

PRE-ENGINEERED BUILDING ALL CONTRACT AMOUNTS

- C** **KEYSTRUCT CONSTRUCTION, INC.**
- N** Cargill Feed Mill
- L** Chambersburg, Pa.
- CO** Cargill Animal Nutrition
- AE** Providence Engineering Corporation



Municipal Builders repurposed 24,780-square-feet of the bottom level of a parking garage into the Edina Water Treatment Plant No. 6, which aids the removal of vinyl chloride from the city's water supply.

PUBLIC WORKS/ENVIRONMENTAL ALL CONTRACT AMOUNTS

- C** **MUNICIPAL BUILDERS, INC.**
- N** Edina Water Treatment Plant No. 6
- L** Edina, Minn.
- CO** City of Edina
- AE** AECOM

Eagle Winners

General Contractor/
Construction
Management
Categories

RENOVATION - LESS THAN \$4 MILLION

GORSKI ENGINEERING, INC. **C**
Woodside Lodge at Spring Mountain **N**
Schwenksville, Pa. **L**
Woodside Lodge, LLC **CO**



Gorski Engineering brought a hidden gem back to life by renovating this abandoned inn built in the 1920s—adding a bar, restaurant, commercial kitchen, and eight-room bed and breakfast.

RENOVATION - \$4-20 MILLION

FLINTCO, LLC **C**
The University of Texas at Austin **N**
Jackson School of Geosciences
Holland Family Student Center
Austin, Texas **L**
The University of Texas System **CO**
McKinney York Architects **A**
Tom Green & Company Engineers, Inc. **E**



Flintco renovated 10,000 square feet of occupied interior space and created 11,000 square feet of exterior space—with some excavation done by hand to protect Texas live oak trees—all while keeping university disruptions to a minimum.

RENOVATION - \$20-50 MILLION

FITE BUILDING COMPANY, INC. **C**
Independence Tube Phoenix Project **N**
Decatur, Ala. **L**
Independence Tube Corporation **CO**
Barge, Waggoner, Sumner & Cannon, Inc. **AE**



Fite rebuilt this manufacturing mill less than a year after it was struck by a tornado that destroyed 80 percent of the facility and severely damaged the remaining 20 percent.

Eagle Winners

General Contractor/
Construction
Management
Categories



Brindley Construction took a unique approach to building this 68,477-square-foot senior living facility by beginning work at the back of the site to accommodate a 50-foot slope.

RESIDENTIAL

- C** **BRINDLEY CONSTRUCTION, LLC**
- N** Neighborhoods at Tiger Place
- L** Columbia, Mo.
- CO** Americare
- A** Larry D. Nelson, Architect
- E** Strickland Engineering, LC



Straub Martin Harris helped improve troop morale by providing the Marine Corps Air Ground Combat Center with LEED Platinum-designed facilities in the middle of the desert, including three barracks, an amphitheater and multiple recreation facilities.

MEGA-PROJECTS - \$100-200 MILLION

- C** **STRAUB MARTIN HARRIS JV**
- N** Bachelor Enlisted Quarters & Parking Structure, Package 9
- L** Marine Corps Air Ground Combat Center, Twentynine Palms, Calif.
- CO** U.S. Department of the Navy, NAVFAC Southwest Division
- A** PGAL Architects
- E** Engineering Partners, Inc. / Construction Testing & Engineering, Inc. / Walter P Moore / K. Killman, Inc.



Balfour Beatty and Clark finished this 2.4 million-square-foot project six months ahead of schedule, making it the largest U.S. Army Corps of Engineers project since the construction of the Pentagon.

MEGA-PROJECTS MORE THAN \$200 MILLION

- C** **CLARK/BALFOUR BEATTY, A JOINT VENTURE**
- N** NGA Campus East Headquarters
- L** Fort Belvoir, Va.
- CO** U.S. Army Corps of Engineers, Baltimore District
- A** RTKL / KlingStubbins A Joint Venture
- E** Jacobs Engineering

Pyramid Winners

Specialty Contractor Categories

ELECTRICAL-COMMERCIAL LESS THAN \$5 MILLION

- C** DURO ELECTRIC COMPANY
- N** The Denver County Jail
- L** Denver, Colo.
- CO** The City and County of Denver
- A** Reilly Johnson Architecture
- E** MKK Consulting Engineers, Inc.
- GC** FCI Constructors, Inc.

ELECTRICAL-INDUSTRIAL LESS THAN \$2 MILLION

- C** TRIAD ELECTRIC & CONTROLS, INC.
- N** Georgia Pacific Power Distribution Feeder
Design & Build Project
- L** Crossett, Ark.
- CO** Georgia Pacific Consumer Products LP
- AE** H&K Engineering, LLC

ELECTRICAL-INDUSTRIAL \$2-10 MILLION

- C** ISC CONSTRUCTORS, L.L.C.
- N** Advantage Fire Detection Systems Project
- L** Port Arthur, Texas
- CO** Motiva Enterprises LLC
- E** Bechtel Jacobs Company LLC /
Advantage Fire Protection Company

ELECTRICAL PROJECTS MORE THAN \$10 MILLION

- C** STARR ELECTRIC COMPANY, INC.
- N** Duke Cancer Institute
- L** Durham, N.C.
- CO** Duke University Health Center
- A** TK&A Architects
- E** Bard, Rao + Athanas Consulting Engineers, LLC
- GC** KBR Building Group

ELECTRICAL PROJECTS MORE THAN \$10 MILLION

- C** TRIAD ELECTRIC & CONTROLS, INC.
- N** Oxy Cryogenics Gas Project
- L** Tupman, Calif.
- CO** Occidental of Elk Hills
- AE** CB&I

EXTERIORS

- C** WITMER MASONRY, INC.
- N** Franklin & Marshall New College House
- L** Lancaster, Pa.
- CO** Franklin & Marshall College
- A** Robert A.M. Stern Architects, LLP
- E** Keast & Hood Company
- GC** Wohlsen/Turner - A Joint Venture

INTERIORS

- C** KING COMPANY, LP
- N** Hyatt Regency New Orleans
- L** New Orleans, La.
- CO** Poydras Properties Hotel Holdings Co., LLC
- A** HC Architecture Inc.
- E** Associated Design Group, Inc.
- GC** DonahueFavretWelbro, LLC

INTERIORS

- C** MANGANARO MIDATLANTIC, LLC
- N** NGA Campus East Headquarters
- L** Fort Belvoir, Va.
- CO** U.S. Army Corps of Engineers
- A** RTKL Associates, Inc.
- E** U.S. Army Corps of Engineers
- GC** Clark/Balfour Beatty, A Joint Venture

MECHANICAL-COMMERCIAL LESS THAN \$2 MILLION

- C** EARLY SERVICES, INC.
- N** Madison Fire Station #2
- L** Madison, Ala.
- CO** City of Madison
- A** Osborn & Associates Architects
- E** Engineered Solutions, Inc. Consulting Engineers
- GC** Lee Builders, Inc.

MECHANICAL-COMMERCIAL \$2-10 MILLION

- C** RK MECHANICAL, INC.
- N** History Colorado Center
- L** Denver, Colo.
- CO** State of Colorado
- A** Tryba Architects
- E** MKK Consulting Engineers, Inc.
- GC** Hensel Phelps Construction Co.

MECHANICAL-INDUSTRIAL LESS THAN \$10 MILLION

- C** WALDROP MECHANICAL SERVICES
- N** Bosch Rexroth HVAC Upgrade I
Manufacturing Retrofit
- L** Fountain Inn, S.C.
- CO** Bosch Rexroth Corporation
- AE** O'Neal, Inc.
- GC** O'Neal, Inc.

Pyramid Winners

Specialty Contractor Categories

MECHANICAL PROJECTS MORE THAN \$10 MILLION

- C** **HARDY CORPORATION**
- N** Benjamin Russell Hospital for Children
- L** Birmingham, Ala.
- CO** Children's of Alabama
- A** HKS, Inc.
- E** ccrd partners
- GC** Hoar/KBR Joint Venture

MECHANICAL PROJECTS MORE THAN \$10 MILLION

- C** **STARCON INTERNATIONAL, INC.**
- N** BP Exploration / BP Alaska Prudhoe Bay Central
Compressor Plant 2012 Turnaround
- L** Prudhoe Bay, Alaska
- CO** BP Exploration

OTHER SPECIALTY CONSTRUCTION LESS THAN \$1 MILLION

- C** **HTH COMPANIES, INC.**
- N** Basic Combat Training Complex III
and Complex VI
- L** Fort Leonard Wood, Mo.
- CO** U.S. Army Corp of Engineers
- AE** STV Incorporated
- GC** Mortenson Construction

OTHER SPECIALTY CONSTRUCTION MORE THAN \$1 MILLION

- C** **CAJUN DEEP FOUNDATIONS, LLC**
- N** Diamond Green Diesel Piling
- L** Norco, La.
- CO** Diamond Green Diesel, LLC
- E** Richard Design Services, Inc.
- GC** Cajun Constructors, Inc.

SITework/LANDSCAPE/HARDSCAPE ALL CONTRACT AMOUNTS

- C** **WONDRA CONSTRUCTION, INC.**
- N** Signicast Expansion MOD 6
- L** Hartford, Wis.
- CO** Signicast Corporation
- A** Milwaukee Architects & Planners, Inc.
- E** DAAR Engineering, Inc.

Pyramid Winners

General Contractor/Construction Management Categories

COMMERCIAL - LESS THAN \$5 MILLION

- C** **MOON CONSTRUCTION SERVICES, INC.**
- N** 24/7 Health Club and Wellness Center
- L** Huntsville, Ala.
- CO** Blevins Properties, LLC
- A** William M. Boehme & Associates Architects
- E** Qualls Engineering

COMMERCIAL - \$5-10 MILLION

- C** **BAIRD/WILLIAMS CONSTRUCTION, LTD**
- N** The Fikes Companies Headquarters
- L** Temple, Texas
- CO** The Fikes Companies
- A** The Wallace Group
- E** Hendrix Consulting Engineers

COMMERCIAL - \$10-25 MILLION

- C** **WATTERSON CONSTRUCTION COMPANY**
- N** Health Communities Building
- L** Anchorage, Alaska
- CO** Alaska Native Tribal Health Consortium
- A** Bettisworth North Architects & Planners
- E** BBFM Engineers Inc.

COMMERCIAL - \$25-100 MILLION

- C** **KBR BUILDING GROUP**
- N** DuPont Chestnut Run, Project Renaissance – Building 730
- L** Wilmington, Del.
- CO** DuPont
- AE** KlingStubbins

FEDERAL GOVERNMENT/MILITARY LESS THAN \$10 MILLION

- C** **NIKING CORPORATION**
- N** Child Development Center
- L** NCTAMS PAC, Wahiawa, Hawaii
- CO** U.S. Department of the Navy, NAVFAC Hawaii
- A** Niking Corporation

FEDERAL GOVERNMENT/MILITARY LESS THAN \$10 MILLION

- C** **STRONGHOLD ENGINEERING, INC.**
- N** Photovoltaic System, SPAWAR
- L** San Diego, Calif.
- CO** U.S. Department of the Navy
- AE** Poggemeyer Design Group, Inc.

FEDERAL GOVERNMENT/MILITARY \$10-100 MILLION

- C** **STRONGHOLD ENGINEERING, INC.**
- N** P-740 New Bachelor Enlisted Quarters
- L** San Clemente Island, Calif.
- CO** U.S. Department of the Navy, NAVFAC Command SW / OICC MCI West
- AE** Ravatt Albrecht & Associates, Inc.

HEALTHCARE - LESS THAN \$10 MILLION

- C** **HOAR CONSTRUCTION, LLC**
- N** Medical Center Enterprise - O.B. Addition
- L** Enterprise, Ala.
- CO** Medical Center Enterprise
- A** C. Ross Architect
- E** I. C. Thomasson Associates, Inc.

HEALTHCARE - \$10-25 MILLION

- C** **HOAR CONSTRUCTION, LLC**
- N** St. Vincent's St. Clair Hospital and Medical Office Building
- L** Pell City, Ala.
- CO** St. Clair County Health Care Authority
- A** Birchfield Penuel & Associates, LLC

HEALTHCARE - \$25-100 MILLION

- C** **THE LEMOINE COMPANY, LLC**
- N** Lafayette General Medical Center Tower Renovations
- L** Lafayette, La.
- CO** Lafayette General Medical Center
- A** WHLC Architecture, LLC
- E** Associated Design Group, Inc.

HISTORICAL RESTORATION/RENOVATION LESS THAN \$25 MILLION

- C** **WARFEL CONSTRUCTION COMPANY**
- N** Lancaster Central Market Renovations
- L** Lancaster, Pa.
- CO** City of Lancaster
- A** Hammel Associates Architects, LLC

INDUSTRIAL - LESS THAN \$10 MILLION

- C** **C.S. BEATTY CONSTRUCTION, INC.**
- N** International Paper Pine Hill Mill ASB Revetment
- L** Pine Hill, Ala.
- CO** International Paper Company
- E** AMEC Environment and Infrastructure, Inc.

INDUSTRIAL - LESS THAN \$10 MILLION

- C** **ROBINS & MORTON**
- N** Kemper County Steam Turbine Generator
- L** Kemper County, Miss.
- CO** Mississippi Power

INDUSTRIAL - \$10-25 MILLION

- C** **IBBERSON INTERNATIONAL, INC.**
- N** Replacement Flour Mill
- L** Laffiteau, Haiti
- CO** Seaboard Corporation
- A** Ibberson International, Inc.
- E** Ibberson Engineering, Inc.

INDUSTRIAL - \$25-100 MILLION

- C** **CAJUN CONSTRUCTORS, INC.**
- N** Diamond Green Diesel Project - Phase I
- L** Norco, La.
- CO** Diamond Green Diesel, LLC
- E** Richard Design Services, Inc.

Pyramid Winners

General Contractor/Construction Management Categories

INFRASTRUCTURE: HEAVY ALL CONTRACT AMOUNTS

C CIANBRO CORPORATION

N Humpback Bridge Replacement Over Boundary Channel and Rehabilitation of George Washington Memorial Parkway

L Washington, D.C. and Arlington, Va.

CO U.S. National Park Service and U.S. Department of Transportation - Federal Highway Administration, Eastern Federal Lands Highway Division

E Federal Highway Administration, Eastern Federal Lands Highway Division with URS Corporation as Design Consultant

INSTITUTIONAL - \$5-10 MILLION

C B.L. HARBERT INTERNATIONAL, LLC

N Alabama School of Fine Arts - Dorothy Jemison Day Theater

L Birmingham, Ala.

CO Alabama School of Fine Arts

A LIVE Design Group

INSTITUTIONAL - \$10-25 MILLION

C HAL HAYS CONSTRUCTION, INC.

N Bay Model Building

L Sausalito, Calif.

CO U.S. Army Corps of Engineers

A Lee & Sakahara Architects

E Nabih Youssef Associates / Leighton Consulting, Inc.

INSTITUTIONAL - \$25-100 MILLION

C ADOLFSON & PETERSON CONSTRUCTION, INC.

N Garden City High School

L Garden City, Kan.

CO Garden City Public Schools Unified School District 457

AE DLR Group

INSTITUTIONAL - \$25-100 MILLION

C FLINTCO, LLC

N First Presbyterian Church Renovation & Expansion

L Tulsa, Okla.

CO First Presbyterian Church

AE Cyntergy AEC

OTHER CONSTRUCTION - \$2-100 MILLION

C ARRIGHI CONSTRUCTION, LLC

N North Boulevard Town Square, Phase 1

L Baton Rouge, La.

CO City of Baton Rouge

A Brown+Danos landdesign and Joseph Furr Design Studio - A Joint Venture, Inc.

PUBLIC WORKS/ENVIRONMENTAL ALL CONTRACT AMOUNTS

C ENCORE CONSTRUCTION COMPANY, LLC

N Seminole County Regional Water Treatment Facility at Yankee Lake

L Sanford, Fla.

CO Seminole County Government

E CH2M HILL

RENOVATION - LESS THAN \$4 MILLION

C MOON CONSTRUCTION SERVICES, INC.

N ATI Wah Chang Building 4 Re-Roof

L Huntsville, Ala.

CO ATI Wah Chang

RENOVATION - \$4-20 MILLION

C FORRESTER CONSTRUCTION COMPANY

N The Hamilton

L Washington, D.C.

CO Clyde's Restaurant Group

A RustlOrling Architecture

RENOVATION - \$4-20 MILLION

C LUND-ROSS CONSTRUCTORS

N Jindra Fine Arts Building

L Peru, Neb.

CO Peru State College

A Jackson-Jackson & Associates, Inc.

E Farris Engineering

RENOVATION - \$20-50 MILLION

C FORRESTER CONSTRUCTION COMPANY

N 815 Connecticut Avenue

L Washington, D.C.

CO DRI Development Services, LLC

A VOA Associates Incorporated

RESIDENTIAL

C C. RAYMOND DAVIS & SONS, INC.

N Private Residence

L Phoenixville, Pa.

CO Mark Davis

A Mark Davis

MEGA-PROJECTS - \$100-200 MILLION

C B.L. HARBERT INTERNATIONAL, LLC

N New U.S. Embassy Compound

L Monrovia, Republic of Liberia

CO U.S. Department of State's Bureau of Overseas Buildings Operations

A PageSoutherlandPage

MEGA-PROJECTS - MORE THAN \$200 MILLION

C HENSEL PHELPS CONSTRUCTION CO.

N PHX Sky Train - Stage 1 Fixed Facilities

L Phoenix, Ariz.

CO City of Phoenix

AE Gannett Fleming, Inc.

MEGA-PROJECTS - MORE THAN \$200 MILLION

C HUNT/MOSS, A JOINT VENTURE

N Marlins Park

L Miami, Fla.

CO Florida Marlins, LP, Miami-Dade County and City of Miami

A Populous

E Bliss & Nyitray, Inc. / Walter P Moore

Leading the Way to World-Class Safety

2012 NATIONAL SAFETY EXCELLENCE AWARD RECIPIENTS

From exceptional safety records to rigorous training and education programs, winners of the National Safety Excellence Awards excelled in all 20 components of ABC's Safety Training Evaluation Process (STEP), demonstrating an extraordinary commitment to safety.

Panel of Judges

TODD MEEK

Corporate Safety Director
Lauren Engineers & Constructors, Inc.
Abilene, Texas
2013 ABC National Environment,
Health & Safety Committee Chair

RICH BALDWIN, CSP

Corporate HSE Director
PCL Construction Enterprises
Denver, Colo.

GARY BIRCHALL

DuPont Safety Resources
Wilmington, N.C.

MICHAEL CAUGHEY

HSE Manager
Starcon International, a CIANBRO Company
La Porte, Texas

ED FOULKE

Partner
Fisher & Phillips, LLC
Atlanta, Ga.

DARYL GUERCIO

Corporate EHS Compliance Manager
The Shaw Group, Inc.
Baton Rouge, La.

BART HACKER

President
ABC Central Ohio Chapter
Columbus, Ohio

RALPH RILEY

Safety/Workforce Programs Manager
S&B Engineers & Constructors, Ltd.
Houston, Texas

ROCKY ROWLETT

Corporate Safety Director
Flintco, LLC
Tulsa, Okla.

CRAIG SHAFFER, CSP

President
SafetyWorks, Inc.
Dillsburg, Pa.

SHELLEY SUTTON, SSH

Safety Director
hth companies, inc.
Union, Mo.

FRANK WAMPOL

Corporate Safety Director
B.L. Harbert International
Birmingham, Ala.

Pinnacle Winners

ISC CONSTRUCTORS, L.L.C.
Baton Rouge, La.
LEBOLO CONSTRUCTION MANAGEMENT, INC.
Boynton Beach, Fla.
MOBLEY INDUSTRIAL SERVICES, INC.
Deer Park, Texas
THE MUNDY COMPANIES
Houston, Texas
PCL INDUSTRIAL CONSTRUCTION COMPANY
Houston, Texas
W.T. BYLER CO.
Houston, Texas

Excellence Winners

NAICS 236

GENERAL CONTRACTOR

BALFOUR BEATTY CONSTRUCTION
Plantation, Fla.
HENDRICK CONSTRUCTION, INC.
Charlotte, N.C.
PERFORMANCE CONTRACTORS, INC.
Irvington, Ala.
RELIABLE BUILDERS, INC.
Tamuning, Guam
W. G. YATES & SONS CONSTRUCTION COMPANY
Biloxi, Miss.

NAICS 237

HEAVY AND CIVIL ENGINEERING CONTRACTOR

LAUREN ENGINEERS & CONSTRUCTORS, INC.
Abilene, Texas
PCL INDUSTRIAL SERVICES
Bakersfield, Calif.
TURNER INDUSTRIES GROUP, L.L.C.
Baton Rouge, La.

NAICS 238

SPECIALTY CONTRACTOR

ELECTRICO, INC.
Baltimore, Md.
HTH COMPANIES, INC.
Union, Mo.
INTERSTATES COMPANIES
Sioux Center, Iowa
KWEST GROUP, LLC
Perrysburg, Ohio
POLK MECHANICAL COMPANY
Houston, Texas
STARCON INTERNATIONAL, INC.
La Porte, Texas

Merit Winners

NAICS 236

GENERAL CONTRACTOR

CLOUSE CONSTRUCTION CORP.

New Reigel, Ohio

MDI, INC. GENERAL CONTRACTORS

Coppell, Texas

MOSS & ASSOCIATES

Fort Lauderdale, Fla.

SPAWGLASS CONSTRUCTION CORPORATION

Houston, Texas

THREE RIVERS CORPORATION

Midland, Mich.

NAICS 237

HEAVY AND CIVIL ENGINEERING CONTRACTOR

R. J. GRONDIN & SONS

Gorham, Maine

RHC

Bakersfield, Calif.

NAICS 238

SPECIALTY CONTRACTOR

ALPINE PAINTING & SANDBLASTING CONTRACTORS

Paterson, N.J.

G.E. INSULATION CO.

Sanford, Mich.

J & J FIRE PROTECTION COMPANY, INC.

Butler, Pa.

MAINTENANCE ENTERPRISES LLC

White Castle, La.

MTECH MECHANICAL TECHNOLOGIES GROUP

Westminster, Colo.

NOTCH MECHANICAL CONSTRUCTORS

Chicopee, Mass.

RK MECHANICAL, INC.

Denver, Colo.

WESTGATE, LLC

Port Allen, La.

Championing a Diverse Industry

2012 NATIONAL DIVERSITY EXCELLENCE AWARD RECIPIENTS

The ABC National Diversity Excellence Awards

recognize members that display exemplary
diversity leadership in their workforce, supply
chain and community with best-in-class
recruitment policies, retention practices,
and training and mentoring programs.



ASSOCIATE

SEDGWICK LLP
San Francisco, Calif.

SUPPLIER

UNITED RENTALS
Greenwich, Conn.

SUBCONTRACTOR

TD INDUSTRIES, INC.
Dallas, Texas

GENERAL CONTRACTOR

HENSEL PHELPS CONSTRUCTION CO.
Greeley, Colo.

Panel of Judges

CHARLES EATON

Director-Corporate Diversity
Hensel Phelps Construction Co.
Chantilly, Va.

LAURA R. LAPIDUS, ESQ.

EPL Risk Control Consulting Director
CNA
New York, N.Y.

VINCENT T. NORWILLO, ESQ.

Partner
Gonzalez Saggio & Harlan LLP
Cleveland, Ohio

CLYDE RAINEY

Diversity Director
Gaylor, Inc.
Indianapolis, Ind.

DEBORAH E.G. WILDER

President
Contractor Compliance and Monitoring, Inc.
San Mateo, Calif.



Contractor of the Year Award



Cajun Industries got its start in 1973 under the direction of Founder and Chairman Lane Grigsby. Originally focusing on structural concrete work, the firm has expanded to include five sub-companies specializing in turnkey general contracting, industrial design and construction, deep foundation work, maritime construction and equipment services.

Annual revenues exceed \$300 million, with work contracted nationwide in various sectors, such as energy, government, manufacturing and water quality. Cajun Industries also is skilled at disaster response and emergency preparedness.

As an execution-based contractor with about 1,500 employees, Cajun Industries self-performs 80 percent of its work. The firm emphasizes a family-oriented culture of continuous improvement in which each sub-company adapts to changing market needs, as well as invests in safety training and workforce development. Grigsby puts it: “The real key to our success is we don’t lose good people. We have a lot of entrepreneurs and leaders on staff, and we encourage that kind of spirit.”

Cajun Industries became a member of ABC—and a stout supporter of the merit shop philosophy—in 1974. Company leadership continues to be actively involved in the New Orleans/Bayou, Pelican and Greater Houston chapters.

2012 STEP Diamond Recipients

A&D GC, Inc.
Adolfson & Peterson Construction
Aggregate Technologies Inc.
Alloy Construction Service, Inc.
AMEC Power & Process Americas
Atlantic Constructors, Inc.
Auburn Constructors, Inc.
Balfour Beatty Construction, LLC
Bergelectric Corp Contrs/Engineers
Big J Enterprises, LLC
Braun Electric Company, Inc.
Brock Services, Ltd.
BRYCON Construction
Burton Construction
Caddell Construction Co. (DE) LLC
Cajun Industries, LLC
Centennial Contractors Enterprises, Inc.
Color Works Painting, Inc.
Control Roofing & Sheet Metal Corp.
D.E. Harvey Builders, Inc.
Ergon Maintenance Services
Facchina Construction of Florida, L.L.C.
Flintco, LLC
Fogel-Anderson Construction Co.
G.E. Insulation Co.
G.R. Birdwell Construction
Group Industries, LLC.
Harper Limbach LLC
Harvey-Cleary Builders
Hathaway Construction Services
Hayward Electric
Hensel Phelps Construction Co.
HITT Contracting Inc.
Huser Construction Co., Inc.
I E S Commercial, Inc.
I.E. - Pacific, Inc.
Insulations, Inc.
ISC Constructors LLC
J.M. Coull, Inc.
JACOBS
Johnston Products of Dallas, Inc.
KBR Building Group, LLC
Keystrect Construction, Inc.
KS Industries LP
Kwest Group
L. D. Kerns Contractors, Inc.
Lauren Engineers & Constructors, Inc.
L-Con, Inc. Engineers & Constructors
Lebolo Construction Management, Inc.
Lemco Construction Services, L.P.
Manhattan Construction Company
MDI, Inc. General Contractors
Metro Elevator Co., Inc.
Meyer Najem Construction
Midstate Site Development, LLC
Miller-Valentine Commercial Construction
Miller-Valentine Group - Columbia
MMR Group
Mobley Industrial Services, Inc.
NCM Contracting Group
Niking Corporation
Northern Electric Inc.
Notch Mechanical Constructors
PCL Industrial Construction Company
PCL Industrial Services
Performance Contractors, Inc.
R.A. Glancy & Sons, Inc.
Reliable Builders, Inc.
Repcon, Inc.
Rust Constructors, Inc.
S&B Engineers and Constructors, Ltd.
Safway Services, LLC
SDV Construction Inc
SEDALCO, L.P.
Sippel Development Co., Inc.
Southway Builders, Inc.
SpawGlass Contractors, Inc.
SSI Services, LLC
Sturgeon Services International
The Brevard Company
The Mundy Companies
Thos. S. Byrne, Ltd.
Three Rivers Corporation
TIC-The Industrial Company
Titan Construction & Engineering Services, Inc.
Triad Electric & Controls, Inc.
VCS Security Systems, Inc.
W.G. Yates Construction
W.T. Byler Co.
Weaver & Jacobs Constructors, Inc.
Williams Building Company, Inc.

INDEX OF ALL WINNERS

A

ACI Mechanical, Inc.	7
Adolfson & Peterson Construction, Inc.	21
Alpine Painting & Sandblasting Contractors	25
Arrighi Construction, LLC	21

B

B.L. Harbert International, LLC	21
Baird/Williams Construction, LTD	20
Balfour Beatty Construction	14, 24
Brasfield & Gorrie, LLC	10, 11
Brindley Construction, LLC	13, 17
Brockway Mechanical & Roofing Company, Inc.	6

C

C. Raymond Davis & Sons, Inc.	21
C.S. Beatty Construction, Inc.	20
Cajun Constructors, Inc.	20
Cajun Deep Foundations, LLC	19
Cajun Industries, LLC	28
Cianbro Corporation	21
Clark Caddell A Joint Venture	11
Clark/Balfour Beatty, A Joint Venture	17
Clouse Construction Corp.	25
Cummings-Balfour Beatty, A Joint Venture	14

D

Duro Electric Company	18
Durr Heavy Construction	8

E

Early Services, Inc.	18
Electrico, Inc.	24

Encore Construction Company, LLC	21
EXCEL Fabrication & Construction, Inc.	8
EXCEL-SUN	7

F

Fite Building Company, Inc.	16
Flintco, LLC	15, 16, 21
Forrester Construction Company	21

G

G.E. Insulation Co.	25
Gorski Engineering, Inc.	14, 16
GROUP Contractors, LLC	13

H

Hal Hays Construction, Inc.	21
Hardy Corporation	19
Harvey-Cleary Builders	10
Helix Electric, Inc.	4
Hendrick Construction, Inc.	24
Hensel Phelps Construction Co.	21, 27
HITT Contracting Inc.	11
Hoar Construction, LLC	20
hth companies, inc.	19, 24
Hunt/Moss, A Joint Venture	21

I

Ibberson International, Inc.	20
Interstates Companies	5, 24
ISC Constructors, L.L.C.	4, 5, 18, 24

J

J & J Fire Protection Company, Inc.	25
-------------------------------------	----

<hr/>	
K	
<hr/>	
KBR Building Group	20
Keystuct Construction, Inc.	15
King Company, LP	18
KPost Company	5
Kwest Group, LLC	7, 24
<hr/>	
L	
<hr/>	
LASCO Acoustics and Drywall, Inc.	6
Lauren Engineers & Constructors, Inc.	24
Lebolo Construction Management, Inc.	24
Lund-Ross Constructors	21
<hr/>	
M	
<hr/>	
Maintenance Enterprises LLC	25
Manganaro Midatlantic, LLC	18
MDI, Inc. General Contractors	25
Mobley Industrial Services, Inc.	24
Moon Construction Services, Inc.	20, 21
Moss & Associates	25
MTech Mechanical Technologies Group	25
Municipal Builders, Inc.	15
<hr/>	
N	
<hr/>	
Niking Corporation	20
Notch Mechanical Constructors	25
<hr/>	
P	
<hr/>	
PCL Industrial Construction Company	24
PCL Industrial Services	24
Performance Contractors, Inc.	12, 24
Polk Mechanical Company	24
<hr/>	
R	
<hr/>	
R. J. Grondin & Sons	25
Reliable Builders, Inc.	24
<hr/>	
RK Mechanical, Inc.	18, 25
RHC	25
Robins & Morton	20
Roche Constructors, Inc.	10
<hr/>	
S	
<hr/>	
Sedgwick LLP	27
SpawGlass	9, 12, 13
SpawGlass Construction Corporation	25
Starcon International, Inc.	19, 24
Starr Electric Company, Inc	4, 18
Straub Martin Harris JV	17
Stronghold Engineering, Inc.	20
Synergy Construction, Inc.	9
<hr/>	
T	
<hr/>	
TDIndustries, Inc.	6, 27
The Haskell Company	9
The Lemoine Company, LLC	20
The Mundy Companies	24
Three Rivers Corporation	25
Triad Electric & Controls, Inc.	18
Turner Industries Group, L.L.C.	12, 24
<hr/>	
U	
<hr/>	
United Rentals	27
<hr/>	
W	
<hr/>	
W. G. Yates & Sons Construction Company	24
W.T. Byler Co.	24
Waldrop Mechanical Services	18
Warfel Construction Company	20
Watterson Construction Company	20
Westgate, LLC	25
Witmer Masonry, Inc.	18
Wondra Construction, Inc.	19

THANK YOU SPONSORS

———— Eagle ————



———— Excellence ————



———— Merit ————



———— EIC After-Party ————



National Diversity Excellence Awards Sponsors



National Safety Excellence Awards Sponsor
and ABC Strategic Partner





4250 NORTH FAIRFAX DRIVE
ARLINGTON, VA 22203
(703) 812-2000
WWW.ABC.ORG