

# 27th Annual Excellence in Construction® Awards

Top Construction Projects  
Exemplary Safety Leaders  
Champions of Diversity





# National Excellence in Construction Awards

PANEL OF JUDGES / 3

## Eagle Winners

### **SPECIALTY CONTRACTORS**

ELECTRICAL / 4

EXTERIORS / 5

INTERIORS / 6

MECHANICAL / 6

OTHER SPECIALTY CONSTRUCTION / 8

SITework/LANDSCAPE/HARDSCAPE / 9

### **GENERAL CONTRACTORS/CONSTRUCTION MANAGEMENT**

COMMERCIAL / 10

COMMUNITY/PUBLIC SERVICE / 11

FEDERAL GOVERNMENT/MILITARY / 11

HEALTH CARE / 12

HISTORICAL RESTORATION/RENOVATION / 13

INDUSTRIAL / 13

INFRASTRUCTURE: HEAVY / 15

INSTITUTIONAL / 15

MEGA-PROJECTS / 16

OTHER CONSTRUCTION / 17

PRE-ENGINEERED BUILDING / 17

PUBLIC WORKS/ENVIRONMENTAL / 18

RENOVATION / 18

RESIDENTIAL / 19

## Pyramid Winners

SPECIALTY CONTRACTORS / 20

GENERAL CONTRACTORS/CONSTRUCTION MANAGEMENT / 21

# National Safety Excellence Awards

PANEL OF JUDGES / 25

## Pinnacle Winners

GENERAL CONTRACTOR / 26

HEAVY AND CIVIL ENGINEERING CONTRACTOR / 26

SPECIALTY CONTRACTOR / 26

## Excellence Winners

GENERAL CONTRACTOR / 26

HEAVY AND CIVIL ENGINEERING CONTRACTOR / 27

SPECIALTY CONTRACTOR / 27

## Merit Winners

GENERAL CONTRACTOR / 27

HEAVY AND CIVIL ENGINEERING CONTRACTOR / 27

SPECIALTY CONTRACTOR / 27

# National Diversity Excellence Awards

PANEL OF JUDGES / 29

## Diversity Winners

GENERAL CONTRACTOR OVER \$33 MILLION / 29

GENERAL CONTRACTOR UNDER \$33 MILLION / 29

SMALL & EMERGING CONTRACTOR / 29

ASSOCIATE / 29

SUPPLIER / 29

# Contractor of the Year Award

## Contractor of the Year / 30

2016 STEP DIAMOND RECIPIENTS / 31

INDEX OF ALL WINNERS / 32

PROGRAM SPONSORS / 33



# Built on Excellence

## **2016 EXCELLENCE IN CONSTRUCTION® AWARD RECIPIENTS**

The Excellence in Construction Awards honor the skill and creativity of the entire team—contractor, owner, architect and engineer—that works collaboratively to deliver an outstanding construction project. The 2016 award recipients embody the principles of merit shop construction achieving world-class performance in innovation and quality.



**Accredited Quality Contractor** is a credential for companies\* that have documented their commitment to five key areas of corporate responsibility: quality, safety, employee benefits, training, and community relations and diversity.

\*Chapter Specific



# Panel of Judges

**MICHAEL R. BEGLINGER**

*Construction Manager, Construction Division  
Smithsonian Facilities  
Washington, D.C.*

**MICHAEL H. CASTEN**

*Founder & Principal  
Construction Concepts  
Greensboro, N.C.*

**LISA CHOPLIN, DBIA**

*Deputy Executive Director  
Design-Build Institute of America  
Washington, D.C.*

**PATRICK L. GLON**

*Professor Emeritus  
Purdue University  
Sturgis, Mich.*

**PATRICK GREEN**

*Business Partner Executive  
BuiltWorlds  
Chicago*

**DANIEL GROVES**

*Director of Operations  
Construction Users Roundtable  
Cincinnati*

**DAVID HOLMES, PE, PMP**

*Configuration Manager  
BAE Systems  
Radford, Va.*

**DEDE HUGHES, IOM**

*Executive Vice President  
National Association of Women in Construction  
Fort Worth, Texas*

**SUZANNA KELLEY, FAIA**

*Managing Director, Strategic Alliances and Initiatives  
The American Institute of Architects  
Washington, D.C.*

**JJ MCCARTHY, LEED AP, AIC**

*Vice President – PreConstruction & Estimating  
Tishman Construction Corporation  
Arlington, Va.*

**DAVE MIELKE**

*President  
MIELKE Holdings LLC  
Tampa, Fla.*

**DEREK ROSS**

*Deputy Director, Construction Division  
Smithsonian Facilities  
Washington, D.C.*

**DAVE SPENCER**

*President  
S. David & Co. LLC  
Jacksonville, Fla.*

**ANDREW WRIGHT**

*Deputy Editor  
Engineering News-Record  
New York*

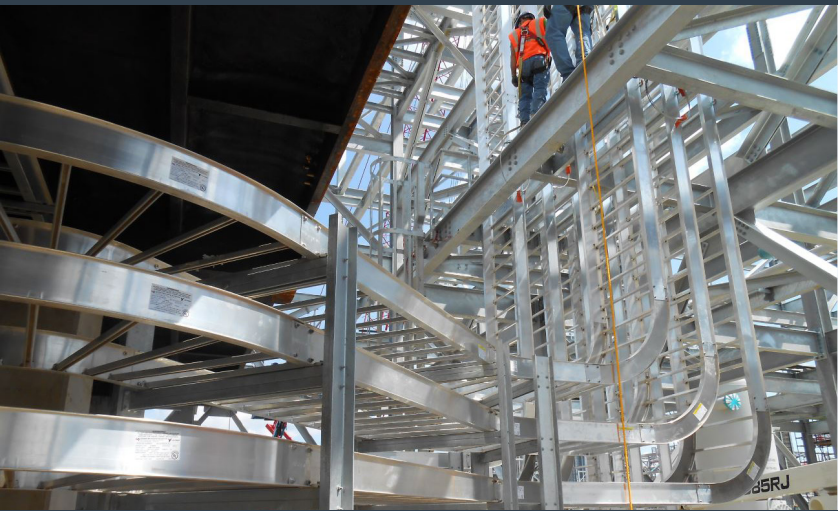


# Eagle Winners

Specialty Contractors

ELECTRICAL - OVER \$10 MILLION

**ISC CONSTRUCTORS LLC** **C**  
Kemper County IGCC Project **N**  
DeKalb, Miss. **L**  
Southern Co. **CO**  
Southern Co. **GC**



ISC logged more than 1.5 million manhours over 43 months with no recordable incidents while providing secondary field engineering, routing of electrical raceway and wiring, and installation of electrical field devices on an integrated gasification combined cycle plant.

ELECTRICAL: COMMERCIAL  
LESS THAN \$2 MILLION

**GOSS ELECTRIC INC.** **C**  
University of North Alabama CCTV System **N**  
Florence, Ala. **L**  
University of North Alabama **CO**



To increase safety at the University North Alabama, Goss Electric Inc. installed a surveillance system with 158 cameras across the 130-acre campus that provides HD-quality video to security officers.

ELECTRICAL: COMMERCIAL  
\$2 TO \$10 MILLION

**PRICE ELECTRIC** **C**  
University of Iowa Children's Hospital Centralized **N**  
Emergency Power Generator Facility **L**  
Iowa City, Iowa **CO**  
University of Iowa Hospitals and Clinics **A**  
Shive-Hattery Architecture + Engineering **E**  
Affiliated Engineers Inc.



Price Electric used an adaptive and collaborative approach when planning the simultaneous work that needed to be done in three non-adjacent locations in order to provide backup generator power to a children's hospital.



# Eagle Winners

Specialty Contractors



This first-of-its-kind process facility had an extremely diverse scope. Equipment was brought in from around the world, featuring everything from medium voltage tie-ins to security camera systems, all of which Shaw Electric installed safely and on a tight schedule.

**ELECTRICAL: INDUSTRIAL  
LESS THAN \$2 MILLION**

- C** **SHAW ELECTRIC INC.**
- N** Big River Prairie Gold - Zein Facility
- L** Galva, Ill.
- CO** Big River Prairie Gold LLC
- A** Carl A. Nelson & Co.
- E** Industrial Automated Systems
- GC** Carl A. Nelson & Co.



Careful coordination and technical expertise were required to ensure seamless integration for Honeywell UOP's equipment startup; MMR completed the project on time in 163,808 hours with zero recordable injuries.

**ELECTRICAL: INDUSTRIAL  
\$2 TO \$10 MILLION**

- C** **MMR CONSTRUCTORS INC.**
- N** UOP Honeywell Line 4 Catalyst
- L** Electrical & Instrumentation Project
- L** Shreveport, La.
- CO** UOP Honeywell
- E** Wood Group Mustang



**PRODUCTIVITY AWARD  
WINNER**



Chamberlin Roofing & Waterproofing installed approximately 600,000 square feet of one-of-a-kind roof coating murals on three parking garages that depict aerial landscape views from the countries in which the corporate client operates across the globe.

**EXTERIORS: EXTERIOR FINISHES**

- C** **CHAMBERLIN ROOFING & WATERPROOFING**
- N** Project Delta - Garage Roof Coating Phase
- L** Spring, Texas
- CO** Confidential
- A** Gensler
- E** Cardno Haynes Whaley
- GC** Gilbane Building Co.





# Eagle Winners

Specialty Contractors

**EXTERIORS: MASONRY,  
PRECAST OR STONE**

**PREMIER STONEWORKS LLC** **C**  
Bearded Man **N**  
Miami Beach, Fla. **L**  
Development Service Solutions LLC **CO**  
Shulman + Associates **A**  
Plaza Construction **GC**



Recreating this historic façade, which brings back a piece of Miami Beach's rich history, required precision, attention to detail, creativity and collaboration among Premier Stoneworks, the architect and the local preservation board.

**INTERIORS: ACOUSTICAL,  
DRYWALL, MILLWORK OR PLASTER**

**BAKERTRIANGLE** **C**  
Crossroads Children's Building **N**  
Grand Prairie, Texas **L**  
Crossroads Christian Church **CO**  
HH Architects **A**  
Julian P. Barry General Contractor LP **GC**



Crossroad Christian Church's 75,000-square-foot Children's Building features a 3-D cross marquee and a Disney-esque Main Street corridor under a 40-foot-high barrel vault ceiling and specialty framing and drywall form a forest canopy. A 32-foot-tall framed, finished spire tops the building.

**MECHANICAL - OVER \$10 MILLION**

**SHAPIRO & DUNCAN INC.** **C**  
INOVA Women's and Children's Hospital **N**  
Falls Church, Va. **L**  
INOVA Health Care Services **CO**  
Wilmot Sanz Architecture Planning **A**  
RMF Engineering **E**  
Clark Construction Group LLC **GC**



Shapiro & Duncan installed 76 miles of pipe on the one million-square-foot INOVA Women's and Children's Hospital—finishing under budget and ahead of schedule despite more than 3,500 RFIs, \$7 million in scope changes, a defaulted electrician and an Ebola scare.





# Eagle Winners

Specialty Contractors



When Walhalla Elementary's chiller suddenly failed in the spring of 2016, Waldrop implemented sound planning and effective teamwork to exceed an aggressive eight-week summer schedule and finish the school's HVAC and electrical systems replacement one week early.

**MECHANICAL: COMMERCIAL  
LESS THAN \$2 MILLION**

- C** **WALDROP MECHANICAL SERVICES**
- N** Walhalla Elementary School - HVAC Renovations
- L** Walhalla, S.C.
- CO** School District of Oconee County
- A** Jumper Carter Sease Architects
- E** Crow & Bulman Engineering Inc.



The Waldrop team delivered the second phase of Furman University's multi-building residence hall renovation in 84 days—performing twice the amount of work as the previous summer while exceeding the owner's cost, schedule, quality and safety expectations.

**MECHANICAL: COMMERCIAL  
\$2 TO 10 MILLION**

- C** **WALDROP MECHANICAL SERVICES**
- N** Furman University Lakeside Residence Hall Renovations - Phase II
- L** Greenville, S.C.
- CO** Furman University
- A** LS3P Associates Ltd.
- E** Peritus Engineers & Associates Inc.
- GC** Triangle Construction Co. Inc.



**PRODUCTIVITY AWARD  
WINNER**



Manhattan Mechanical Services overcame an aggressive schedule, numerous engineering complications, harsh weather and critical equipment delays during the installation of a cooling conveyor for a new oil production line.

**MECHANICAL: INDUSTRIAL  
LESS THAN \$10 MILLION**

- C** **MANHATTAN MECHANICAL SERVICES LLC**
- N** SBS Steel Belt Systems USA - IOI Loders Croklaan Cooling Conveyor Project
- L** Channahon, Ill.
- CO** IOI Loders Croklaan
- E** SBS Steel Belt Systems USA



# Eagle Winners

Specialty Contractors

OTHER SPECIALTY CONSTRUCTION  
COMMERCIAL - LESS THAN \$2 MILLION

**AGGREGATE TECHNOLOGIES INC.** **C**  
Port of Houston Wharf 10 **N**  
Houston **L**  
Port of Houston Authority **CO**  
MB Western Industrial Contracting Co. **GC**



After a shipwreck severely damaged the Wharf 10 Pier in the Port of Houston, Aggregate Technologies relied on innovative planning to demolish and remove the unstable pier safely, ahead of schedule and under budget.

OTHER SPECIALTY CONSTRUCTION  
COMMERCIAL - MORE THAN \$2 MILLION

**CHAMBERLIN ROOFING & WATERPROOFING** **C**  
Dallas Love Field Modernization Program **N**  
Dallas **L**  
Southwest Airlines Co. **CO**  
Corgan Associates **A**  
Hensel Phelps **GC**



Chamberlin logged 59,830 incident-free manhours while installing nearly 550,000 square feet of roofing during the four-year expansion of the Dallas Love Field Airport, and created an innovative solution to rectify a roof deck sloping issue.

OTHER SPECIALTY CONSTRUCTION  
INDUSTRIAL - LESS THAN \$10 MILLION

**C.S. BEATTY CONSTRUCTION INC.** **C**  
Mercedes-Benz Body Shop **N**  
and Assembly Center Expansion  
Vance, Ala. **L**  
Mercedes-Benz U.S. International **CO**  
Mercedes-Benz U.S. International **A**  
CCI Planning and Engineering **E**  
Harbert-Gray, A Joint Venture **GC**



C.S. Beatty Construction performed all sitework—including mass grading and excavation, storm and sanitary sewer installation and domestic water installation—for a 1.4 million-square-foot addition to the Mercedes-Benz manufacturing plant in Vance, Ala.



# Eagle Winners

Specialty Contractors



Cajun Deep Foundations LLC constructed all subgrade foundations for Chevron Phillips' USGC Ethylene Project. The fast-paced scope consisted of design, testing and installation of augered cast-in-place piles, sheet pile cofferdams and drilled pier foundations.

**OTHER SPECIALTY CONSTRUCTION  
INDUSTRIAL - MORE THAN \$10 MILLION**

- C** **CAJUN INDUSTRIES LLC**
- N** Chevron Phillips Chemical - USGC Ethylene Project
- L** Baytown, Texas
- CO** Chevron Phillips Chemical
- GC** JGC-FEI Joint Venture



The Orleans Parish Sheriff's Office parking lot project—consisting of demolition, underground utilities, earthwork, asphalt paving, fencing and signs—demanded a creative workflow design by Durr to accommodate an accelerated schedule, high security standards, site access limitations and coordination among multiple organizations.

**SITework/LANDSCAPE/HARDSCAPE**

- C** **DURR HEAVY  
CONSTRUCTION LLC**
- N** Orleans Parish Sheriff's Office Parking Lot
- L** New Orleans
- CO** Orleans Parish Sheriff's Office
- A** Sizeler Thompson Brown Architects
- E** Julien Engineering & Consulting Inc.
- GC** Durr Heavy Construction LLC



# Eagle Winners

General Contractors/  
Construction Management

COMMERCIAL - LESS THAN \$5 MILLION

C.S. BEATTY CONSTRUCTION INC. C

EBSCO Headquarters Exit Driveway N  
Birmingham, Ala. L  
EBSCO Industries Inc. CO  
Nimrod Long and Associates A  
Alabama Engineering Co. Inc. E



C.S. Beatty Construction dealt with unsuitable soils and steep declines while cutting a 600-foot road with 40-foot drops through an existing forest from the client's headquarters to a major highway.

COMMERCIAL - \$5 TO \$10 MILLION

CAJUN INDUSTRIES LLC C

Cajun Industries Office Expansion N  
Baton Rouge, La. L  
Grigsby Properties LLC CO  
GraceHebert Architects, APAC A  
Wardlaw and Lasseigne LLC E



Cajun Constructors completed a seven-phase modernization of its corporate campus, including a 30,000-square-foot contemporary office building, multiple reprogrammed spaces and exterior elements that enhance employee collaboration.

COMMERCIAL - \$10 TO \$25 MILLION

FCI CONSTRUCTORS INC. C

TIC Training Center & Offices N  
Aurora, Colo. L  
TIC Holdings Inc. CO  
Davis Partnership Architects A



FCI Constructors adhered to industrial safety standards on The Industrial Co.'s new administrative space and construction training labs—coming in with zero lost-time injuries and \$134,000 under the guaranteed maximum price.





Hoar opened the 280,400-square-foot Baybrook Mall renovation and expansion, including a lifestyle center and parking deck, on schedule despite permitting delays and more than 120 days of rain.



Milender White dealt with fundraising challenges and coordinated with multiple stakeholders to extensively renovate a building in downtown Denver into the Rocky Mountain region's first facility where domestic violence victims receive collaborative services and support.



I.E.-Pacific performed a 20,000-square-foot addition to a facility for advanced helicopter training that consists of a pre-engineered structure housing four flight simulator bays and supportive administrative space.

# Eagle Winners

General Contractors/  
Construction Management

**COMMERCIAL - \$25 TO \$100 MILLION**

- C

N

L

CO

A

E
- HOAR CONSTRUCTION**

Baybrook Mall Expansion

Friendswood, Texas

General Growth Properties

Omniplan

BGE I Brown & Gay Engineers Inc.



**COMMUNITY/PUBLIC SERVICE**

- C

N

L

CO

A

E
- MILENDER WHITE**

Rose Andom Center

Denver

Denver Justice Council (DJC)

OZ Architecture

Enayat Schneider Smith Engineering Inc.



**FEDERAL GOVERNMENT/MILITARY  
LESS THAN \$10 MILLION**

- C

N

L

CO

A

E
- I.E.-PACIFIC INC.**

D/B P957 H60 Trainer

Naval Base Coronado, San Diego

NAVFAC Southwest

Tectonics A-E

Berg Engineering



**GREENER TOMORROW  
AWARD WINNER**



# Eagle Winners

General Contractors/  
Construction Management

FEDERAL GOVERNMENT/MILITARY  
\$10 TO \$100 MILLION

**NOVA GROUP INC.** **C**

Replace Fuel Storage **N**

Edwards AFB, Calif. **L**

U.S. Army Corps of Engineers, Los Angeles District **CO**



Nova replaced an antiquated 1950s fuel storage and distribution system with a new facility that provides easier flight line access for jet fueling by truck and increases reliability for critical Air Force operations.

HEALTH CARE - LESS THAN \$10 MILLION

**ROBINS & MORTON** **C**

Duke University Medical Center **N**

Surgical Unit Renovation **L**

Durham, N.C. **L**

Duke Health **CO**

Perkins + Will **A**

RMF Engineering **E**



Robins & Morton completed a 14,000-square-foot surgical unit renovation in the heart of a medical center that required every major system and utility to be shut down to accommodate critical upgrades and new equipment installation in nine operating rooms.

HEALTH CARE - \$10 TO \$25 MILLION

**ROBINS & MORTON** **C**

HealthSouth Rehabilitation Hospital **N**

of Cincinnati at Norwood **L**

Norwood, Ohio **L**

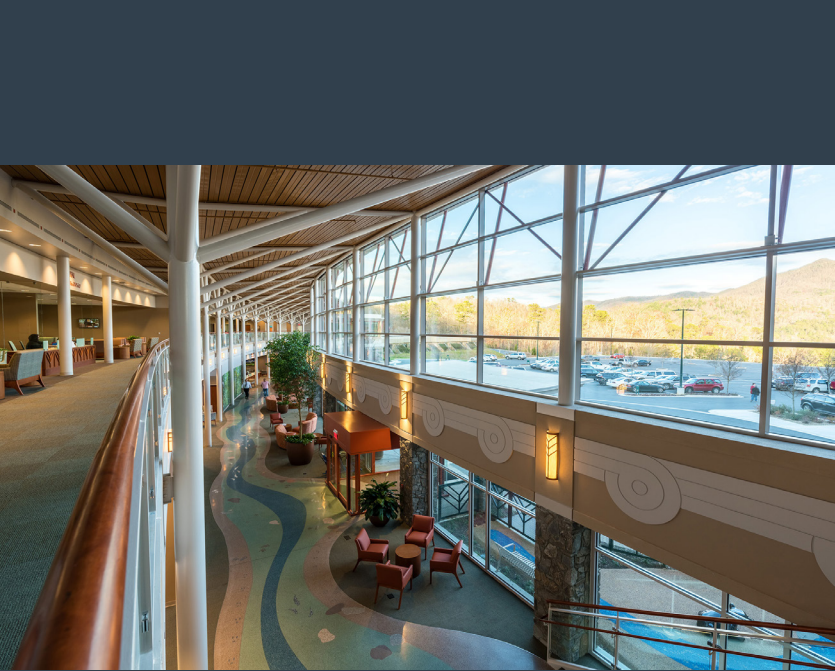
HealthSouth Corporation **CO**

Perkins + Will **A**

WSP **E**



Robins & Morton finished the HealthSouth Rehabilitation Hospital by the original substantial completion date and within the overall budget despite unseasonably cold temperatures and frozen ground, poor soil conditions and design changes due to a change in project ownership.



A commitment to integrated project delivery from the entire team, along with lean design and construction, resulted in finishing the Cherokee Indian Hospital 92 days ahead of schedule, with \$7 million of value-added features fed back into the overall \$80 million budget.



Lewis Contractors navigated an exceptionally tight work zone featuring comprehensive scaffolding to complete interior and exterior repairs to the historic Washington Monument in Baltimore—with restoration crews discovering two hidden time capsules dating back to 1815 and 1915.



The fast-track Motiva Enterprises Amite Project consisted of 60 separate work packages located throughout the entire refinery, with Cajun Industrial Design & Construction logging 74,194 manhours in just eight months to finish on time and with no recordable incidents.

# Eagle Winners

General Contractors/  
Construction Management

## HEALTH CARE - \$25 TO \$100 MILLION

- C

**ROBINS & MORTON**
- N

Cherokee Indian Hospital
- L

Cherokee, N.C.
- CO

Cherokee Indian Hospital Authority
- A

Design Strategies
- E

Design Strategies



## HISTORICAL - LESS THAN \$25 MILLION

- C

**LEWIS CONTRACTORS**
- N

The Mount Vernon Place Conservancy Washington Monument Restoration
- L

Baltimore
- CO

Mount Vernon Place Conservancy
- A

Sandra Vicchio & Associates
- E

CVM



## INDUSTRIAL - LESS THAN \$5 MILLION

- C

**CAJUN INDUSTRIES LLC**
- N

Motiva-Amite Convent Tank Farm Stream
- L

Convent, La.
- CO

Motiva Enterprises
- E

Ford Bacon & Davis





# Eagle Winners

General Contractors/  
Construction Management

INDUSTRIAL - \$5 TO \$15 MILLION

GROUP CONTRACTORS LLC

Poly B Packaging Warehouse, The Dow Co.  
Plaquemine, La.  
The Dow Co.  
Dow Engineering Solutions  
Dow Engineering Solutions



GROUP Contractors persevered through flooding and 25 change orders by re-sequencing the schedule and collaborating with subcontractors to meet the immovable deadline for a new 86,000-square-foot pre-engineered metal warehouse and precast office complex at Dow's Louisiana petrochemical facility.

INDUSTRIAL - \$15 TO \$25 MILLION

CAJUN INDUSTRIES LLC

Shintech HAPF-3  
Plaquemine, La.  
Shintech  
Shintech  
Shintech



Cajun Industrial Design & Construction demonstrated resourceful and profitable execution in building a hydrochloric acid production furnace on an accelerated 12-month schedule, recording zero injuries over 181,788 manhours.

INDUSTRIAL - \$25 TO \$100 MILLION

TIC - THE INDUSTRIAL CO.

Elk Station Units 2 & 3  
Abernathy, Texas  
Golden Spread Electric Cooperative  
Kiewit Engineering and Design Co.

DESIGN-BUILD INSTITUTE  
OF AMERICA AWARD WINNER



TIC completed the Elk Station Units 2 & 3 project under budget and ahead of the 12-month schedule, logging more than 680,000 safe manhours to build two 190-megawatt gas facilities featuring cross-tie capabilities between plants and dual grid-switching technology.



# Eagle Winners

General Contractors/  
Construction Management



Cianbro rehabilitated the structural steel, replaced the control house and mechanical and electrical systems and performed realignment on the Mystic River Bascule Bridge over the course of three winters to accommodate the tourist-filled summer season of historic Mystic, Conn.

**INFRASTRUCTURE: HEAVY**

- C** **CIANBRO CORP.**
- N** Mystic River Bascule Bridge Rehabilitation
- L** Stonington & Groton, Conn.
- CO** Connecticut Department of Transportation
- E** TranSystems Corporation

**PRODUCTIVITY AWARD  
WINNER**



American Constructors executed the owner's and architect's vision of "a village in the forest" for this 3,400-square-foot elementary school expansion while maintaining the budget and keeping the schedule on track despite 31 rain days.

**INSTITUTIONAL - LESS THAN \$5 MILLION**

- C** **AMERICAN CONSTRUCTORS**
- N** Headwaters School Elementary Expansion
- L** Austin, Texas
- CO** Headwaters School
- A** Derrington Building Studio
- E** Structures / EEA Consulting Engineers (MEP) / Thompson Land Engineering LLC (Civil)



Roche Constructors coordinated the renovation of a 50,000-square-foot warehouse into a modern two-story trade school and office for Emily Griffith Technical College on a tight schedule and amid weather and site constraints.

**INSTITUTIONAL - \$5 TO \$10 MILLION**

- C** **ROCHE CONSTRUCTORS INC.**
- N** Emily Griffith Technical College Shops Relocation
- L** Denver
- CO** School District No. 1, City & County of Denver, State of Colorado
- A** Larson Incitti Architects
- E** Envision Mechanical Engineers Inc.





# Eagle Winners

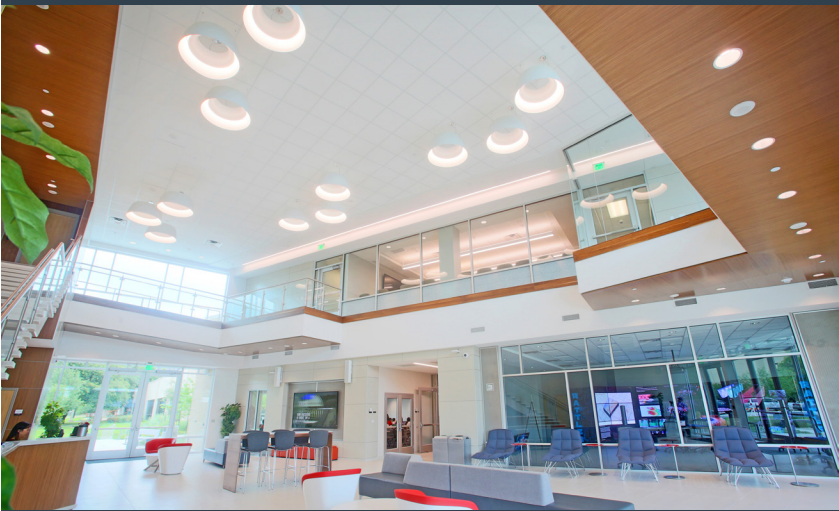
General Contractors/  
Construction Management

INSTITUTIONAL - \$10 TO \$25 MILLION

FLINTCO LLC

C  
N  
L  
CO  
A

Texas Advanced Computing Center Office Building  
Austin, Texas  
The University of Texas System  
O'Connell Robertson



Flintco and the design-build team worked to accommodate stakeholder needs on Texas Advanced Computing Center's active research campus, delivering a 38,000-square-foot office building on time and within budget despite 75 inches of rain from groundbreaking to completion.

INSTITUTIONAL - \$25 TO \$100 MILLION

BROADMOOR LLC

C  
N  
L  
CO  
A  
E

George Washington Carver High School  
New Orleans  
Louisiana Department of Education  
Recovery School District  
Broadmoor LLC in association with Manning Architects  
Morphy Makofsky Inc.

DESIGN-BUILD INSTITUTE  
OF AMERICA AWARD WINNER



Broadmoor embraced the opportunity to build an educational facility for a neighborhood that was lost to Hurricane Katrina—delivering the \$49 million G.W. Carver High School within budget, on time for the school year and without any accidents.

MEGA-PROJECTS - OVER \$100 MILLION

TURNER INDUSTRIES  
GROUP LLC

C  
N  
L  
CO  
E

Delayed Coker Replacement Project  
McPherson, Kan.  
CHS  
Mustang Engineering



More than 3,000 ABC-trained craft professionals logged 2.7 million manhours—working at heights of 300 feet in extreme temperatures—as Turner Industries performed a 34-month coker replacement project with zero lost-time incidents.





C.S. Beatty Construction transformed undeveloped land into a working 52-acre horse farm with five paddock areas and miles of riding trails, as well as a 3-acre lake that was designed after 30 sinkholes were found on one area of the job.



Roche Constructors delivered this 2.26-acre park for children and adults with disabilities under an aggressive seven-month schedule, providing cost savings to the nonprofit owner without compromising on quality or safety.



Caddell received the highest possible marks for safety, schedule, quality and customer service from project owners and users despite numerous significant design changes on this state-of-the-art complex that plays a critical role in accomplishing the mission of the Army's Special Operations Forces.

# Eagle Winners

General Contractors/  
Construction Management

## OTHER CONSTRUCTION LESS THAN \$2 MILLION

- C** **C.S. BEATTY CONSTRUCTION INC.**
- N** Ponderosa Rescue Ranch
- L** Leeds, Ala.
- CO** Babbie and Jon Styslinger
- A** Nimrod Long and Associates
- E** Walter Schoel Engineering Co. Inc.



## OTHER CONSTRUCTION \$2 TO \$100 MILLION

- C** **ROCHE CONSTRUCTORS INC.**
- N** Sean's Park, a Life-Learning Park for Children and Adults with Disabilities
- L** Las Vegas
- CO** Opportunity Village
- A** Southwick Landscape Architects
- E** Nevada By Design



## PRE-ENGINEERED BUILDING

- C** **CADDELL CONSTRUCTION CO. (DE) LLC**
- N** Design-Build UAV Complex
- L** Camp Mackall/Fort Bragg, N.C.
- CO** U.S. Army Corps of Engineers, Savannah District
- A** Knight Architects
- E** Engineering Design Technologies Inc.





# Eagle Winners

General Contractors/  
Construction Management

PUBLIC WORKS/ENVIRONMENTAL

|  |           |
|--|-----------|
| <b>BLACK CONSTRUCTION CORP.</b>                  | <b>C</b>  |
| Ordot Dump Closure Construction and Dero Road    | <b>N</b>  |
| Sewer Improvements                               | <b>L</b>  |
| Ordot, Guam                                      | <b>CO</b> |
| GBB Solid Waste Management Consultants (Receiver | <b>A</b>  |
| for the Guam Solid Waste Authority)              | <b>E</b>  |
| GHD Inc.   |           |
| GHD Inc./Brown and Caldwell/Geo-Logic Associates |           |



Black Construction Corp. worked 831 days amid 236 inches of rain without a lost-time incident while closing Guam's Ordot Landfill, with a scope encompassing 72 acres and a 400-foot mountain of trash and hazardous waste materials.

RENOVATION - LESS THAN \$4 MILLION

|  |           |
|--|-----------|
| <b>AMERICAN CONSTRUCTORS</b>           | <b>C</b>  |
| The Gin at the Hutto Co-Op District    | <b>N</b>  |
| Hutto, Texas                           | <b>L</b>  |
| City of Hutto                          | <b>CO</b> |
| Antenora Architects, LLP               | <b>A</b>  |
| Architectural Engineers Collaborative/ | <b>E</b>  |
| TTG Engineers (MEP) / Stantec (Civil)  |           |



Through selective deconstruction and adaptive re-use, American Constructors combined the best parts of two iconic gin buildings to create an open-air public gathering space that now serves as the centerpiece of the city of Hutto's mixed-use Co-Op District.

RENOVATION - \$4 TO \$10 MILLION

|   |           |
|---|-----------|
| <b>LANDIS CONSTRUCTION CO. LLC</b>        | <b>C</b>  |
| Maison Dupuy Facade and Courtyard Repairs | <b>N</b>  |
| New Orleans                               | <b>L</b>  |
| PHF New Orleans LLC                       | <b>CO</b> |
| Holly & Smith Architects Inc.             | <b>A</b>  |
| Morphy Makofsky Inc.                      | <b>E</b>  |



The Landis team carried out major façade and courtyard renovations at the Maison Dupuy in the French Quarter of New Orleans—one of the country's most sensitive and protected neighborhoods—without disturbing hotel operations or the surrounding area.





American Constructors reused 90 percent of an existing traffic control equipment manufacturing facility's structure and envelope and repurposed it into a K-12 charter school that accommodates 1,800 students.



Neither blue basalt nor the worst windstorm in Spokane's history could keep Walker crews from successfully completing this complicated 11-story luxury retirement facility. Walker Construction is proud to have delivered this project on time and under budget.



Nor-Son designed and safely built a 13,887-square-foot rustic retreat in remote Upper Peninsula, Mich., using more than 30 tons of split stone along with full log structural support and accents.

# Eagle Winners

General Contractors/  
Construction Management

## RENOVATION - \$10 TO \$100 MILLION

- C** **AMERICAN CONSTRUCTORS**
- N** KIPP Austin Public Schools North Campus
- L** Austin, Texas
- CO** KIPP Austin Public Schools
- A** STG Design
- E** Cardno Haynes Whaley/MEJ & Associates Inc. (MEP)/Stantec (Civil)

## RESIDENTIAL: MULTI-FAMILY AND CONDOMINIUM PROJECTS UP TO \$100 MILLION

- C** **WALKER CONSTRUCTION INC.**
- N** Rockwood Summit Tower
- L** Spokane, Wash.
- CO** Rockwood Retirement Communities
- A** NAC Architecture
- E** DCI Engineers

## RESIDENTIAL: SINGLE-FAMILY PROJECTS - UP TO \$100 MILLION

- C** **NOR-SON INC.**
- N** Deerfield Family Retreat
- L** Confidential
- CO** Tim & Sherry Magnusson
- A** Nor-Son Inc.



# Pyramid Winners

## Specialty Contractors



### ELECTRICAL - OVER \$10 MILLION

**C** **MMR CONSTRUCTORS INC.**

**N** EDC Expansion Project

**L** El Dorado, Ark.

**CO** El Dorado Chemical Co.

**A** Leidos Constructors

**E** Leidos Constructors



### ELECTRICAL - OVER \$10 MILLION

**C** **TRIAD ELECTRIC & CONTROLS INC.**

**N** Methanex Geismar II Project

**L** Geismar, La.

**CO** Methanex

**A** Jacobs Engineering

**E** Jacobs Engineering

**GC** Jacobs Engineering



### ELECTRICAL: COMMERCIAL - LESS THAN \$2 MILLION

**C** **WILLMAR ELECTRIC SERVICE CORP.**

**N** Bethesda Pleasant View Housing Addition and Renovation

**L** Willmar, Minn.

**CO** Bethesda

**A** Horty, Elvig & Associates Inc.

**E** Horty, Elving & Associates Inc.



### ELECTRICAL: COMMERCIAL - \$2 TO \$10 MILLION

**C** **HELIX ELECTRIC**

**N** NBC 7 News Studio

**L** San Diego

**CO** NBC 7 Universal

**A** Carrier Johnson

**E** AMA Consulting

### ELECTRICAL: INDUSTRIAL - LESS THAN \$2 MILLION

**C** **METROPOWER INC.**

**N** Cedartown Energy Storage Demonstration Project

**L** Cedartown, Ga.

**CO** Southern Co.

**E** Hardeman & Bashirian Engineering LLC



### ELECTRICAL: INDUSTRIAL - \$2 TO \$10 MILLION

**C** **ISC CONSTRUCTORS LLC**

**N** 2016 BASF Beaumont Expansion Project

**L** Beaumont, Texas

**CO** BASF Corporation

**E** WorleyParsons

### EXTERIORS: ALL OTHER EXTERIOR FINISHES

**C** **DOUGLASS COLONY GROUP**

**N** 1401 Lawrence

**L** Denver

**CO** First Gulf Corporation

**A** Beck Architecture

**E** Martin/Martin Inc.

**GC** Beck Group

### INTERIORS: ACOUSTICAL, DRYWALL, MILLWORK OR PLASTER

**C** **PRECISION WALLS INC.**

**N** Charleston International Airport

**L** Charleston, S.C.

**CO** Charleston County Aviation Authority

**A** Fentress Architects

**E** Michael M. Simpson Associates

**GC** Austin/HITT

### INTERIORS: ALL OTHER INTERIOR FINISHES

**C** **CAMARATA MASONRY SYSTEMS LTD.**

**N** Energy Center III

**L** Houston

**CO** Trammell Crow Co.

**A** Kirksey Architecture

**E** Haynes Whaley Associates Inc.

**GC** Balfour Beatty Construction LLC



### MECHANICAL - OVER \$10 MILLION

**C** **TDINDUSTRIES INC.**

**N** One Frost

**L** San Antonio

**CO** Frost Bank

**A** Marmon Mok

**E** IA Naman & Associates

**GC** SpawGlass

### MECHANICAL: COMMERCIAL - \$2 TO 10 MILLION

**C** **SPC MECHANICAL**

**N** Reynolds Coliseum Renovation and Walk of Fame

**L** Raleigh, N.C.

**CO** North Carolina State University

**GC** Danis

### OTHER SPECIALTY CONSTRUCTION - COMMERCIAL LESS THAN \$2 MILLION

**C** **BRIEGAN CONCRETE CONSTRUCTORS**

**N** UNCG Railroad Pedestrian Underpass

**L** Greensboro, N.C.

**CO** University of North Carolina - Greensboro

**A** Wagner Murray Architects, P.A.

**E** Jenny Engineering Corp.

### OTHER SPECIALTY CONSTRUCTION - COMMERCIAL LESS THAN \$2 MILLION

**C** **MOON CONSTRUCTION SERVICES INC.**

**N** The Academy for Academics and Arts Theater Addition

**L** Huntsville, Ala.

**CO** Huntsville City Schools Board of Education

**A** Nola VanPeurseem Architects, PC

**E** Echols, Lindsey & Moore Structural Engineers Inc.



# Pyramid Winners

General Contractors/  
Construction Management



**OTHER SPECIALTY CONSTRUCTION  
COMMERCIAL - MORE THAN \$2 MILLION**

- C** **RK STEEL**
- N** Foothills Mall Shopping Center
- L** Fort Collins, Colo.
- CO** Alberta Development Partners
- A** JPRA Architects
- E** Monroe and Newell
- GC** The Beck Group



**OTHER SPECIALTY CONSTRUCTION  
INDUSTRIAL - LESS THAN \$10 MILLION**

- C** **CAJUN INDUSTRIES LLC**
- N** Marathon Pipe Rack & Infrastructure Upgrades
- L** Garyville, La.
- CO** Marathon Petroleum Co.
- E** Fluor Corporation



**OTHER SPECIALTY CONSTRUCTION - INDUSTRIAL  
LESS THAN \$10 MILLION**

- C** **HOLES INC.**
- N** Sasol Chemical Unit 225 Dismantling
- L** Westlake, La.
- CO** Sasol Chemical
- E** Flour Technip Integrated
- GC** Turner Industries LLC



**OTHER SPECIALTY CONSTRUCTION - INDUSTRIAL  
MORE THAN \$10 MILLION**

- C** **CAJUN INDUSTRIES LLC**
- N** Shintech Ethane Cracker Plant
- L** Plaquemine, La.
- CO** Shintech
- E** TOYO Engineering
- GC** CB&I

**SITework/LANDSCAPE/HARDSCAPE**

- C** **KWEST GROUP LLC**
- N** Breaks Station
- L** Elkhorn City, Ky.
- CO** American Electric Power
- E** American Electric Power



**COMMERCIAL - LESS THAN \$5 MILLION**

- C** **EXCEL**
- N** Apache Industrial New Facility
- L** Geismar, La.
- CO** Land Hawk Properties LLC
- A** Alvin Fairburn and Associates
- E** Alvin Fairburn and Associates



**COMMERCIAL - \$5 TO \$10 MILLION**

- C** **FLINTCO LLC**
- N** Girl Scouts of Eastern Oklahoma Hardesty Leadership Center
- L** Tulsa, Okla.
- CO** Girl Scouts of Eastern Oklahoma
- A** Beck Design
- E** HP Engineering

**COMMERCIAL - \$10 TO \$25 MILLION**

- C** **BROADMOOR LLC**
- N** Mercedes-Benz Superdome End Zone Video Boards
- L** New Orleans
- CO** The Tobler Co.
- A** Trahan Architecture + Planning LLC
- E** Wrightson, Johnson, Haddon & Williams Inc. (WJHW)

**COMMERCIAL - \$10 TO \$25 MILLION**

- C** **STRUCTURE TONE SOUTHWEST LLC**
- N** Vitol Inc.
- L** Houston
- CO** Vitol Inc.
- A** PDR
- E** I.A. Naman + Associates Inc.

**COMMERCIAL - \$25 TO \$100 MILLION**

- C** **DAVID E. HARVEY BUILDERS INC.**
- N** Five Oaks Tower BHP Billiton Tower
- L** Houston
- CO** TIAA
- A** Pickard Chilton
- E** I.A. Naman + Associates
- GC** David E. Harvey Builders Inc.

**COMMUNITY/PUBLIC SERVICE**

- C** **KINSLEY CONSTRUCTION INC.**
- N** ABC Keystone Training Facility
- L** Manheim, Pa.
- CO** Associated Builders and Contractors Inc. Keystone Chapter
- A** SAAarchitects
- E** RGS Associates (Civil), Providence Engineering Corporation (Structural), Paragon Engineering Services Inc. (MEP)

# Pyramid Winners

General Contractors/  
Construction Management



**FEDERAL GOVERNMENT/MILITARY - \$10 TO \$100 MILLION**

- C** **BRASFIELD & GORRIE LLC**  
**N** Cherry Point P163 Marine Air Support Squadron Operations & Maintenance Complex  
**L** Cherry Point, N.C.  
**CO** Naval Facilities Engineering Command (NAVFAC), Mid-Atlantic  
**A** Williard Stewart Caliendo Architects, PA  
**E** I.C. Thomasson Associates Inc.  
**GC** Mitchell Industrial Contractors/Brasfield & Gorrie A Joint Venture

**HEALTHCARE - \$10 TO \$25 MILLION**

- C** **RODGERS BUILDERS INC.**  
**N** Carolinas Medical Center – Main Kitchen Renovation  
**L** Charlotte, N.C.  
**CO** Carolinas HealthCare System  
**A** Wright McGraw Beyer Architects  
**E** RDK Engineers

**HEALTHCARE - \$25 TO \$100 MILLION**

- C** **RODGERS BUILDERS INC.**  
**N** Carteret Health Care - Specialty Pavilion and Vertical Expansion  
**L** Morehead City, N.C.  
**CO** Carteret Health Care  
**A** Earl Architects  
**E** Shultz Engineering

**HEALTHCARE - \$25 TO \$100 MILLION**

- C** **ROY ANDERSON CORP.**  
**N** Memorial Hospital at Gulfport Tower Renovation / Expansion  
**L** Gulfport, Miss.  
**CO** Memorial Hospital at Gulfport  
**A** Blich Knevel Architects  
**E** Simpkins and Costelli Inc.

**HISTORICAL - LESS THAN \$25 MILLION**

- C** **CITADEL BUILDERS LLC**  
**N** Pontchartrain Hotel Renovations  
**L** New Orleans  
**CO** A.J. Capital Partners  
**A** Trapolin-Peer Architects, APC  
**E** IMC Consulting Engineers Inc. and Heaslip Engineering LLC



**HISTORICAL - LESS THAN \$25 MILLION**

- C** **DONAHUEFAVRET CONTRACTORS INC.**  
**N** Fairfield Inn & Suites Conversion  
**L** New Orleans  
**CO** New Castle Hotels & Resorts  
**A** John T. Campo & Associates Inc.  
**E** Morphy Makofsky Inc.



**INDUSTRIAL - LESS THAN \$5 MILLION**

- C** **WALDROP MECHANICAL SERVICES**  
**N** Cummins Technical Center-Charleston - Chiller Plant Replacement and Piping Distribution System Project  
**L** North Charleston, S.C.  
**CO** Cummins Inc.  
**A** Rosenblum Coe Architects  
**E** RMF Engineering

**INDUSTRIAL - \$5 TO \$15 MILLION**

- C** **PRIMORIS SERVICES CORP.**  
**N** Newpark Drilling Fluids Facility Expansion Project  
**L** Port Fourchon, La.  
**CO** Newpark Drilling Fluids LLC  
**E** Case International



**INDUSTRIAL - \$15 TO \$25 MILLION**

- C** **CAJUN INDUSTRIES LLC**  
**N** Motiva - Project Amite  
**L** Convent, La.  
**CO** Motiva Enterprises LLC  
**E** Ford, Bacon & Davis



**INDUSTRIAL - \$15 TO \$25 MILLION**

- C** **THE WEITZ CO.**  
**N** Poultry Feed Mill Facility  
**L** Batesville, Ark.  
**CO** Ozark Mountain Poultry Inc.  
**A** RSP Architects Ltd.  
**E** Weitz Professional Services LLC

**INDUSTRIAL - \$25 TO \$100 MILLION**

- C** **TIC - THE INDUSTRIAL CO.**  
**N** EPE Montana Units 3 & 4  
**L** El Paso, Texas  
**CO** El Paso Electric Co.  
**E** Worley Parsons



**INDUSTRIAL - \$25 TO \$100 MILLION**

- C** **TURNER INDUSTRIES GROUP LLC**  
**N** Methanex G-2 Mechanical Project  
**L** Geismar, La.  
**CO** Methanex Corp.  
**E** Jacobs Engineering  
**GC** Jacobs Field Services North America



**INFRASTRUCTURE: HEAVY**

- C** **MIDDLEMAN CONSTRUCTION CO. LLC**  
**N** Singing Hills  
**L** Bulverde, Texas  
**CO** SH-DJL Development LLC  
**A** Mdn Architects Inc.  
**E** Moy Tarin Ramirez Engineers LLC



**INSTITUTIONAL - LESS THAN \$5 MILLION**

- C** **WARFEL CONSTRUCTION CO.**  
**N** St. Leo the Great Catholic School Expansion and Renovation  
**L** Lancaster, Pa.  
**CO** St. Leo the Great Catholic School  
**A** Cornerstone Design-Architects  
**E** Cornerstone Design-Architects



**INSTITUTIONAL - \$10 TO \$25 MILLION**

- C** **ADOLFSON & PETERSON CONSTRUCTION**  
**N** City of Aurora Public Safety Training Center (CAPSTC)  
**L** Aurora, Colo.  
**CO** City of Aurora  
**A** Studiotope and Barker Rinker Seacat Architecture  
**E** Martin/Martin Inc.



# Pyramid Winners

General Contractors/  
Construction Management

**INSTITUTIONAL - \$10 TO \$25 MILLION**

- C** **MCM**  
**N** Homestead City Hall  
**L** Homestead, Fla.  
**CO** The City of Homestead  
**A** Rodriguez and Quiroga Architects Chartered  
**E** EMTec Corporation - Architectural Engineers

**INSTITUTIONAL - \$25 TO \$100 MILLION**

- C** **AMERICAN CONSTRUCTORS**  
**N** Tom Glenn High School  
**L** Leander, Texas  
**CO** Leander ISD  
**A** Pfluger Architects  
**E** Datum Engineers Inc/MEP Engineering Inc (MEP)/Atkins Global (Civil)

**INSTITUTIONAL - \$25 TO \$100 MILLION**

- C** **JUNEAU CONSTRUCTION CO.**  
**N** University of Alabama Student Center  
**L** Tuscaloosa, Ala.  
**CO** University of Alabama  
**A** Williams Blackstock Architects  
**E** Structural Design Group (Structural), SSOE Inc. (MEP)

**MEGA-PROJECTS - OVER \$100 MILLION**

- C** **DAVID E. HARVEY BUILDERS INC.**  
**N** FMC Technologies Campus  
**L** Houston  
**CO** FMC Technologies  
**A** Gensler  
**E** Cardno Haynes Whaley/Wylie Consulting Engineers/CobbFendley

**OTHER CONSTRUCTION - \$2 TO \$100 MILLION**

- C** **BRASFIELD & GORRIE LLC**  
**N** Georgia Aquarium Sea Lion Exhibit  
**L** Atlanta  
**CO** Georgia Aquarium Inc.  
**A** Peckham, Guy Albers & Viets Inc.  
**E** Uzun & Case Engineers LLC

**OTHER CONSTRUCTION - \$2 TO \$100 MILLION**

- C** **SKANSKA USA**  
**N** West Riverfront Park Redevelopment  
**L** Nashville, Tenn.  
**CO** Metropolitan Government of Nashville and Davidson County  
**A** Hawkins Partners Inc.  
**E** EMC Structural Engineer P.C.

**PRE-ENGINEERED BUILDING**

- C** **T.W. FRIERSON CONTRACTOR INC.**  
**N** Jenkins & Wynne Ford and Honda Dealerships  
**L** Clarksville, Tenn.  
**CO** Jenkins & Wynne  
**A** Lyle Cook Martin Architects Inc.  
**E** DBS & Associates Engineering Inc.

**PUBLIC WORKS/ENVIRONMENTAL**

- C** **CIANBRO CORP.**  
**N** Hadley Falls Station Downstream Fish Passage  
**L** Holyoke, Mass.  
**CO** Holyoke Gas & Electric  
**E** Kleinschmidt Associates

**RENOVATION - \$4 TO \$10 MILLION**

- C** **ERICKSON BUILDERS & CO. INC.**  
**N** Renovate Emergency Department  
**L** Minneapolis  
**CO** Department of Veterans Affairs  
**A** Anderson Engineering  
**E** Dunham Engineering

**RENOVATION - \$10 TO \$100 MILLION**

- C** **HUNT CONSTRUCTION GROUP**  
**N** Spurs AT&T Center Renovations  
**L** San Antonio  
**CO** Spurs Sports & Entertainment  
**A** HOK/360 Architecture  
**E** Henderson Engineers Inc.

**RESIDENTIAL: MULTI-FAMILY AND CONDOMINIUM PROJECTS - UP TO \$100 MILLION**

- C** **THE FAVERGRAY CO.**  
**N** Stadium Village  
**L** Kennesaw, Ga.  
**CO** Haven Campus Communities  
**A** Gary B. Coursey & Associates  
**E** Luis Pontigo & Associates

**RESIDENTIAL: MULTI-FAMILY AND CONDOMINIUM PROJECTS - UP TO \$100 MILLION**

- C** **THE FAVERGRAY CO.**  
**N** The Reserve at Fountainview  
**L** St. Charles, Mo.  
**CO** The Reserve at Fountainview LLC  
**A** Humphreys & Partners  
**E** Integrity Structural Corp.

# A Foundation Of Safety

## **2016 NATIONAL SAFETY EXCELLENCE AWARD RECIPIENTS**

From exceptional safety records to rigorous training and education programs, winners of the National Safety Excellence Awards excelled in all areas of ABC's Safety Training Evaluation Process (STEP), demonstrating an extraordinary commitment to safety.



## Panel of Judges

### **MELANIE LAIRD**

*Executive Vice President – Construction Services*  
FC Construction Services  
Dallas

### **ANTHONY C. LOMBARDI**

*HSEQ Special Projects*  
Centennial Contractors Enterprises Inc.  
Reston, Va.

### **TODD MEEK**

*Vice President, HSE*  
Lauren Engineers & Constructors  
Ablene, Texas

### **RALPH RILEY**

*Safety/Workforce Programs Manager*  
S & B Engineers and Constructors Ltd.  
Houston

### **SHELLEY SUTTON, CSHO**

*Director of Shared Services*  
hth companies inc.  
Union, Mo.

### **JAMES K. THOMPSON**

*Corporate EH&S Director*  
Kwest Group LLC  
Perrysburg, Ohio

### **STEPHEN M. WILTSHIRE, MS**

*Regional Safety Manager*  
AvalonBay Communities Inc.  
Arlington, Va.

---

# Pinnacle Winners

---

NAICS 236

## GENERAL CONTRACTOR

**SDV CONSTRUCTION INC.**   
Albuquerque, N.M.

**THREE RIVERS CORP.**  
Midland, Mich.

**RLS CONSTRUCTION GROUP**  
Mechanicsburg, Pa.

NAICS 237

## HEAVY AND CIVIL ENGINEERING CONTRACTOR

**CIANBRO CORP.**  
Pittsfield, Maine

**LAUREN ENGINEERS AND CONSTRUCTORS INC.**   
Abilene, Texas

**NOVA GROUP INC.**   
Napa, Calif.

**PCL INDUSTRIAL CONSTRUCTION CO.**  
Houston

NAICS 238

## SPECIALTY CONTRACTOR

**COLOR WORKS PAINTING INC.**   
New Castle, Del.

**INTERSTATES**  
Sioux Center, Iowa

**HTH COMPANIES INC.**   
Union, Mo.

**KWEST GROUP LLC**  
Perrysburg, Ohio

---

# Excellence Winners

---

NAICS 236

## GENERAL CONTRACTOR

**CENTENNIAL**  
Reston, Va.

**JM COULL INC.**   
Maynard, Mass.

**MANHATTAN CONSTRUCTION CO.**   
Tulsa, Okla.

**PERFORMANCE SYSTEMS INC.**  
WaiPahu, Hawaii

**ROBINS & MORTON**   
Birmingham, Ala.

**STRUCTURE TONE SOUTHWEST LLC**  
Dallas

**THE MUNDY COS.**  
Houston



NAICS 237

HEAVY AND CIVIL ENGINEERING CONTRACTOR

**BARRIERE CONSTRUCTION CO. LLC**

Metairie, La.

**FISHER CONTRACTING CO.**

Midland, Mich.

**PRIMORIS SERVICES CORP.**

Baton Rouge, La.

**REF-CHEM LP**

Houston

**RICHARD CONSTRUCTION INC.**

Beaumont, Texas

**S & B ENGINEERS AND CONSTRUCTORS LTD.**

Houston

**SAULSBURY INDUSTRIES**

Odessa, Texas

NAICS 238

SPECIALTY CONTRACTOR

**CHAMBERLIN ROOFING & WATERPROOFING**

Dallas

**CLASSIC INDUSTRIAL SERVICES INC.**

Baton Rouge, La.

**ENVIRONMENTAL HOLDINGS INC.**

Morrisville, N.C.

**MCKINNEY DRILLING COMPANY LLC**

Hanover, Md.

**MKD ELECTRIC**

Elgin, Ill.

**PRICE ELECTRIC**

Robins, Iowa

**SAFWAY**

Laurel, Md.

Merit Winners

NAICS 236

GENERAL CONTRACTOR

**CALLAHAN CONSTRUCTION MANAGERS**

Bridgewater, Mass.

**KELLEY CONSTRUCTION INC.**

Louisville, Ky.

**RCL CONSTRUCTION CO. INC.**

Sanford, Mich.

**ROY ANDERSON CORP.**

Gulfport, Miss.

**SAMET CORP.**

Greensboro, N.C.

NAICS 237

HEAVY AND CIVIL ENGINEERING CONTRACTOR

**C.O. FALTER CONSTRUCTION CORP.**

Syracuse, N.Y.

**W.T. BYLER CO.**

Houston

NAICS 238

SPECIALTY CONTRACTOR

**COMFORT SYSTEMS OF VIRGINIA INC.**

Chesapeake, Va.

**G.E. INSULATION CO.**

Sanford, Mich.

**NORTHERN ELECTRIC INC.**

Green Bay, Wis.

**PETERSON BECKNER INDUSTRIES**

Houston

**WAYMAN FIRE PROTECTION INC.**

Wilmington, Del.

# Championing a Diverse Industry

## **2016 NATIONAL DIVERSITY EXCELLENCE AWARD RECIPIENTS**

The ABC National Diversity Excellence Awards

recognize members that display exemplary  
diversity leadership in their workforce, supply  
chain and community with best-in-class  
recruitment policies, retention practices and  
training and mentoring programs.



## Panel of Judges

**SHARON HAMILTON**

*President*

Sentinel Fence & Contracting  
Scottsdale, Ariz.

**LENEE M. KOCH**

*Vice President*

LEI Companies Inc.  
Denver

**LARRY LOPEZ**

*President*

Green JobWorks  
Baltimore

**KRISTEN M. RECTENWALD**

*Senior Assistant City Attorney*

Aviation Practice Group,  
City of Atlanta Department of Law  
Atlanta

### GENERAL CONTRACTOR OVER \$33 MILLION

**HENSEL PHELPS**

Greeley, Colo.

### GENERAL CONTRACTOR UNDER \$33 MILLION

**WU & ASSOCIATES**

Mount Laurel, N.J.

### SMALL & EMERGING CONTRACTOR

**DIVERSITY CONSTRUCTION GROUP**

Cheshire, Conn.

### ASSOCIATE

**ATKINSON, ANDELSON, LOYA, RUUD & ROMO**

Cerritos, Calif.

### SUPPLIER

**UNITED RENTALS**

Stamford, Conn.

# Contractor of the Year Award



**hth companies, inc.**

Every year, ABC honors a company that stands above the rest for its corporate integrity, commitment to the professional development and safety of employees, dedication to expert craftsmanship and high esteem in the industry at large.

This year, ABC bestows the Contractor of the Year award on hth companies, inc., a family-owned mechanical contracting firm headquartered in Union, Mo. Founded in 1984, the company has grown to include 600 employees working in 13 states across America's heartland. In its more than 30-year history, hth companies has expanded its service offerings to include mechanical insulation, scaffold erection, industrial cleaning and maintenance, welding, pipefitting and confined space rescue.

Led by the executive team of CEO and Chairman Greg Hoberock, Mike Freese, Doug Hoberock, Susan Hellebusch, Erin Freese and Shelley Sutton, hth companies embodies the principles of the merit shop in all areas of the business.

hth companies prides itself on an attitude of "clients first"—going above and beyond expectations to provide the most economical and expeditious solutions, and customizing every project strategy according to the client's needs.

hth companies invests in the professional development of not only its own employees, but also the next generation of construction leaders through its recruitment and mentorship programs.

With an EMR of just .59, hth companies boasts a world-class safety culture that encourages employees to take personal responsibility for their safety and the safety of all their business partners—and they have earned several back-to-back ABC National Safety Excellence Awards and STEP Awards as a testament to their commitment.

Plus, hth companies embraces a spirit of volunteerism—dedicating time and resources to local community groups and serving on the top boards of construction business associations nationwide.



# 2016 STEP Diamond Recipients

Aggregate Technologies Inc.  
Allison-Smith Co. LLC  
Alloy Construction Service Inc.  
Amec Foster Wheeler  
American Constructors, Inc  
APAC-Texas Inc.  
Atlas Electrical Construction  
Barriere Construction Co. LLC  
Bartlett Cocke  
Bear Contracting LLC  
Berkel & Company Contractors Inc.  
Blasy Electric Inc.  
Bluewater Constructors Inc.  
Bo-Mac Contractors Ltd.  
Borsche Roofing Professionals Inc.  
Brazos M and E  
Bright Future Electric LLC  
Broadmoor LLC  
Brown & Root Industrial Services LLC  
BRYCON Construction  
Burkhalter Rigging Inc.  
Burrow Global Services LLC  
Byrne Construction Services  
C. S. Beatty Construction Inc.  
Cajun Industries LLC  
Campbell Plumbing & Mechanical  
Contractors  
Canyon Concrete Inc.  
CB&I  
CBG Building Co.  
Centennial Contractors Enterprises Inc.  
Central State Electric Corporation  
CH2M Hill Inc.  
Chamberlin Roofing & Waterproofing  
Cherry Companies  
Chesapeake Contracting Group Inc.  
Chesapeake Glazing Inc.  
Citadel Builders LLC  
Classic Industrial Services Inc.  
Clouse Construction Corp.  
CMS Corporation  
Contractor Service & Fabrication Inc.  
Converse Conditioned Air Inc.  
CP Rankin Inc. Roof Management &  
Contracting  
Craig & Heidt Inc.  
CSM Group  
Custom Entrance Solutions LLC  
D.E. Harvey Builders Inc.  
DESCCO Design & Construction Inc.  
DiMarco Constructors LLC  
DiSabatino Construction Co.  
Dryden Builders Inc.  
Eastern Industrial Services Inc.  
Echo Maintenance Ltd.  
EnerG Test LLC  
Enterprise Commercial Paving  
Erickson Builders & Co. Inc.  
Esper Electric Ltd.  
EXCEL Contractors Inc.  
FaverGray  
Flintco LLC  
Fortune-Johnson Inc.  
G.E. Insulation Co.

Gardner Glass & Glazing Inc.  
Gbuild Construction Managers  
GHD  
Gordon H. Bayer Inc.  
Gregory Construction Services  
Harvey-Cleary Builders  
Haskell  
Hawaiian Rock Products  
Hayward Electric Co.  
HITT Contracting Inc.  
Hoar Construction LLC  
Holes Golden Triangle LLC  
Holes Incorporated  
I.E. - Pacific Inc.  
IES Commercial  
Industrial Coatings Contractors Inc.  
Industrial Construction & Engineering Co.  
Infinity Maintenance Services LP  
ISC Constructors LLC  
Ivey Mechanical Co. LLC  
Jack B. Parson Companies  
Jacobs  
JAMCo Inc.  
JCM Associates Inc.  
Johnston Products of Dallas Inc.  
Kuehl Electric Inc.  
Kwest Group LLC  
L.D. Kerns Contractors Inc.  
Laketown Electric Corporation &  
Engineering  
Laser Electric Inc.  
Lauger Companies Inc.  
Lauren Engineers & Constructors Inc.  
Lemco Construction Services LP  
Leonard Contracting Inc.  
LPR Construction Co.  
M & D Mechanical Contractors Inc.  
M. Davis & Sons Inc.  
M.J. Harris Construction Services  
Manhattan Construction Co.  
Marek  
Marquis Construction Services Inc  
McCarthy Building Companies Inc.  
McGill Maintenance Partnership Ltd.  
Merryman-Farr LLC  
Messer Construction Co.  
Metcon Inc.  
MetroPower Inc.  
Milender White Construction Co.  
Mirage Industrial Group LLC  
MMR Constructors Inc.  
Mobley Industrial Services Inc.  
Moon Construction Services Inc.  
Mountain States Fence Co.  
Nickle Electrical Companies  
Norrell Construction Inc.  
Northern Electric Inc.  
Notch Mechanical Constructors  
Nova Group Inc.  
Oakridge Builders  
Ocean Construction Services Inc.  
Ocean Drywall Inc.  
Ohmstede  
Oil Capital Electric LLC

Optiline Enterprises LLC  
Orion Construction Corp. Guam  
PCE Constructors Inc.  
PCL Industrial Construction Co.  
PCL Industrial Services  
Pearce & Moretto Inc.  
Performance Contractors Inc  
Pernix Group/Penix Guam LLC  
Peterson Beckner Industries Inc.  
Pioneer Roofing LLC  
Polk Mechanical Co.  
Primoris Services Corp.  
QCI Thermal Systems  
QSR Steel Corporation LLC  
Quality Insulators Inc.  
R.C. Stevens Construction Co.  
Repron Inc.  
Riesbeck Contracting Inc.  
RLS Construction Group  
Robert Heely Construction LP  
Robinson Electric Co. Inc.  
Rodgers  
RSI Roofing Inc.  
RUS Industrial LLC  
S&B Engineers and Constructors Ltd.  
S.E.T. - Pacific Inc.  
Saulsbury Industries  
Saybr Contractors Inc.  
SDV Construction Inc  
SECO Architectural Systems Inc.  
Shawhan Sheet Metal LLC  
Slater Painting Co. Inc.  
Spartan Building Corp.  
SpawGlass Contractors Inc.  
Standard Constructors Inc.  
Starcon International Inc.  
Straight Line Industrial Services Inc.  
Straub Construction Co. Inc.  
Summit Industrial Construction LLC  
TCT Construction  
Tecta America Zero Co.  
The Millstone Companies  
The Mundy Companies  
Thermal-Tec/Michigan Inc.  
TIC-The Industrial Co.  
Triad Electric & Controls Inc.  
Trio Electric  
Turner  
Turner Construction Co.  
Turner Industries Group LLC  
United Electrical and Instrumentation  
United Group Services Inc.  
W.M. Jordan Co.  
W.S. Nielsen Co. Inc.  
W.T. Byler Co.  
Wagner General Contractors Inc  
Weaver & Jacobs Constructors Inc.  
Westgate LLC  
White-Spunner Construction Inc.  
Williams Company Management Group  
Window Interiors  
Wondra Construction Inc.  
Woodland Tilt-Up  
Zachry Industrial Inc.  
Zampell Refractories Inc.

INDEX OF ALL WINNERS

|                                       |                       |  |        |                                       |            |
|---------------------------------------|-----------------------|--|--------|---------------------------------------|------------|
| Adolfson & Peterson Construction      | 22                    | GROUP Contractors LLC                  | 14     | Primoris Services Corporation         | 22, 27     |
| Aggregate Technologies Inc.           | 8                     | Helix Electric                         | 20     | RCL Construction Co. Inc.             | 27         |
| American Constructors                 | 15, 18, 19, 23        | Hensel Phelps                          | 29     | Ref-Chem LP                           | 27         |
| Atkinson, Andelson, Loya, Ruud & Romo | 29                    | Hoar Construction                      | 11     | Richard Construction Inc.             | 27         |
| BakerTriangle                         | 6                     | Holes Inc.                             | 21     | RK Steel                              | 21         |
| Barriere Construction Co. LLC         | 27                    | hth companies inc.                     | 27, 30 | RLS Construction Group                | 26         |
| Black Construction Corp.              | 18                    | Hunt Construction Group                | 23     | Robins & Morton                       | 12, 13, 26 |
| Brasfield & Gorrie LLC                | 22, 23                | I.E. Pacific Inc.                      | 11     | Roche Constructors Inc.               | 15, 17     |
| Briegan Concrete Constructors         | 20                    | Interstates                            | 27     | Rodgers Builders Inc.                 | 22         |
| Broadmoor LLC                         | 16, 21                | ISC Constructors LLC                   | 4, 20  | Roy Anderson Corp.                    | 22, 27     |
| C.O. Falter Construction Corp.        | 27                    | JM Coull Inc.                          | 26     | S & B Engineers and Constructors Ltd. | 27         |
| C.S. Beatty Construction Inc.         | 8, 10, 17             | Juneau Construction Co.                | 23     | Safway                                | 27         |
| Caddell Construction Co. (DE) LLC     | 17                    | Kelley Construction Inc.               | 27     | Samet Corporation                     | 27         |
| Cajun Industries LLC                  | 9, 10, 13, 14, 21, 22 | Kinsley Construction Inc.              | 21     | Saulsbury Industries                  | 27         |
| Callahan Construction Managers        | 27                    | Kwest Group LLC                        | 21, 27 | SDV Construction Inc.                 | 26         |
| Camarata Masonry Systems Ltd.         | 20                    | Landis Construction Co. LLC            | 18     | Shapiro & Duncan Inc.                 | 6          |
| Centennial                            | 26                    | Lauren Engineers and Constructors Inc. | 27     | Shaw Electric Inc.                    | 5          |
| Chamberlin Roofing & Waterproofing    | 5, 8, 27              | Lewis Contractors                      | 13     | Skanska USA                           | 23         |
| Cianbro Corp.                         | 15, 23, 27            | Manhattan Construction Co.             | 26     | SPC Mechanical                        | 20         |
| Citadel Builders LLC                  | 22                    | Manhattan Mechanical Services LLC      | 7      | Structure Tone Southwest LLC          | 21, 26     |
| Classic Industrial Services Inc.      | 27                    | McKinney Drilling Company LLC          | 27     | T.W. Frierson Contractor Inc.         | 23         |
| Color Works Painting Inc.             | 26                    | MCM                                    | 23     | TDIndustries Inc.                     | 20         |
| Comfort Systems of Virginia Inc.      | 27                    | MetroPower Inc.                        | 20     | The FaverGray Co.                     | 23         |
| David E. Harvey Builders Inc.         | 21, 23                | Middleman Construction Co. LLC         | 22     | The Mundy Companies                   | 26         |
| Diversity Construction Group          | 29                    | Milender White                         | 11     | The Weitz Co.                         | 22         |
| DonahueFavret Contractors Inc.        | 22                    | MKD Electric                           | 27     | Three Rivers Corp.                    | 26         |
| Douglass Colony Group                 | 20                    | MMR Constructors Inc.                  | 5, 20  | TIC - The Industrial Co.              | 14, 22     |
| Durr Heavy Construction LLC           | 9                     | Moon Construction Services Inc.        | 20     | Triad Electric & Controls Inc.        | 20         |
| Environmental Holdings Inc.           | 27                    | Nor-Son Inc.                           | 19     | Turner Industries Group LLC           | 16, 22     |
| Erickson Builders & Co. Inc.          | 23                    | Northern Electric Inc.                 | 27     | United Rentals Inc.                   | 29         |
| EXCEL                                 | 21                    | Nova Group Inc.                        | 12, 26 | W.T. Byler Co.                        | 27         |
| FCI Constructors Inc.                 | 10                    | PCL Industrial Construction Co.        | 26     | Waldrop Mechanical Services           | 7, 22      |
| Fisher Contracting Co.                | 27                    | Performance Systems Inc.               | 26     | Walker Construction Inc.              | 19         |
| Flintco LLC                           | 16, 21                | Peterson Beckner Industries            | 27     | Warfel Construction Co.               | 22         |
| G.E. Insulation Co.                   | 27                    | Precision Walls Inc.                   | 20     | Wayman Fire Protection Inc.           | 27         |
| Goss Electric Inc.                    | 4                     | Premier Stoneworks LLC                 | 6      | Willmar Electric Service Corp.        | 20         |
|                                       |                       | Price Electric                         | 4, 27  | Wu & Associates Inc.                  | 29         |



## Thank You to Our Sponsors

---

National Excellence in Construction Platinum Sponsors

---



---

National Excellence in Construction Post-event Reception Sponsors

---



**KWEST GROUP**

*Civil Construction and Environmental Services*

---

National Safety Excellence Award Sponsor

---



**We can show you more.®**

---

National Diversity Excellence Award Sponsor

---





440 FIRST ST. NW, SUITE 200  
WASHINGTON, D.C., 20001  
(202) 595-1505  
ABC.ORG