

26th Annual
Excellence in
Construction®
Awards

Top Construction Teams
Exemplary Safety Programs
Champions of Diversity



PAGE 2

National Excellence in Construction® Awards

PANEL OF JUDGES / 3

PAGE 4

Eagle Winners

SPECIALTY CONTRACTOR CATEGORIES / 4

COMMUNITY/PUBLIC SERVICE / 4

ELECTRICAL / 4

EXTERIORS / 6

INTERIORS / 6

MECHANICAL / 7

OTHER SPECIALTY CONSTRUCTION / 8

SITework/LANDSCAPE/HARDSCAPE / 9

GENERAL CONTRACTOR/CONSTRUCTION MANAGEMENT CATEGORIES / 9

COMMERCIAL / 9

COMMUNITY/PUBLIC SERVICE / 11

FEDERAL GOVERNMENT/MILITARY / 11

HEALTH CARE / 12

HISTORICAL RESTORATION/RENOVATION / 13

INDUSTRIAL / 13

INFRASTRUCTURE: HEAVY / 14

INSTITUTIONAL / 15

MEGA-PROJECTS / 16

OTHER CONSTRUCTION / 17

PRE-ENGINEERED BUILDING / 17

PUBLIC WORKS/ENVIRONMENTAL / 18

RENOVATION / 18

RESIDENTIAL / 19

PAGE 20

Pyramid Winners

SPECIALTY CONTRACTOR CATEGORIES / 20

GENERAL CONTRACTOR/CONSTRUCTION MANAGEMENT CATEGORIES / 21

PAGE 24

National Safety Excellence Awards

PANEL OF JUDGES / 25

PAGE 26

Pinnacle Winners

GENERAL CONTRACTOR / 26

HEAVY AND CIVIL ENGINEERING CONTRACTOR / 26

SPECIALTY CONTRACTOR / 26

PAGE 26

Excellence Winners

GENERAL CONTRACTOR / 26

HEAVY AND CIVIL ENGINEERING CONTRACTOR / 26

SPECIALTY CONTRACTOR / 27

PAGE 27

Merit Winners

GENERAL CONTRACTOR / 27

HEAVY AND CIVIL ENGINEERING CONTRACTOR / 27

SPECIALTY CONTRACTOR / 27

PAGE 28

National Diversity Excellence Awards

PANEL OF JUDGES / 29

GENERAL CONTRACTOR UNDER \$33 MILLION / 29

GENERAL CONTRACTOR OVER \$33 MILLION / 29

SUBCONTRACTOR / 29

SUPPLIER & ASSOCIATE / 29

PAGE 30

Contractor of the Year Award

PAGE 31

2015 STEP DIAMOND RECIPIENTS

PAGE 32

INDEX OF ALL WINNERS

PAGE 33

PROGRAM SPONSORS

Built on Excellence

2015 EXCELLENCE IN CONSTRUCTION® AWARD RECIPIENTS

The Excellence in Construction® Awards honor the skill and creativity of the entire team—contractor, owner, architect and engineer—responsible for an outstanding merit shop construction project. The 2015 award recipients exceeded expectations in innovation and quality.



Accredited Quality Contractor designation for companies* that have documented their commitment to the five key areas of corporate responsibility: quality, safety, employee benefits, training, and community relations and diversity.

*Chapter Specific

Panel of Judges

MICHAEL H. CASTEN

Founder & Principal
Construction Concepts
Greensboro, N.C.

DANIEL GROVES

Director of Operations
Construction Users Roundtable
Cincinnati, Ohio

LOWELL HECK

Owner
Heck Commercial Construction Consulting, LLC
Broken Arrow, Okla.

DEDE HUGHES, IOM

Executive Vice President
National Association of Women in Construction
Fort Worth, Texas

DEL C. MARKWARD

Vice President
Society of Industrial and Office Realtors
Washington, D.C.

JJ MCCARTHY, LEED AP, AIC

Vice President – PreConstruction & Estimating
Tishman Construction Corporation
Arlington, Va.

DAVE MIELKE

President
M.W. Mielke, Inc.
Tampa, Fla.

LISA M. PRATS, CAE

Vice President, Marketing and International Affairs
Building Owners and Managers Association International
Washington, D.C.

DAVE SPENCER

President
S. David & Co., Inc.
Jacksonville, Fla.

RICHARD THOMAS

Director of State & Local Legislative Affairs
Design-Build Institute of America
Washington, D.C.

**DRAKE A. WAUTERS,
AIA, CSI/CDT, SCIP, IES, LEED AP BD+C**

Co-Founder
Technical Design for Building Performance
American Institute of Architects
Washington, D.C.

ANDREW WRIGHT

Deputy Editor
Engineering News-Record
New York, N.Y.

Eagle Winners

Specialty Contractor
Categories

COMMUNITY/PUBLIC SERVICE

DURO ELECTRIC COMPANY

The Action Center **C**
Lakewood, Colo. **N**
The Action Center **L**
Ewers Architecture & Orville Anderson Architect **CO**
Given & Associates Inc. **A**
Pinkard Construction **E**
GC



Duro Electric donated a significant amount of materials, labor and management time to help renovate two outdated office building for a nonprofit organization seeking to expand its community services.

ELECTRICAL

HELIX ELECTRIC

Anaheim Regional Transportation Intermodal Center **C**
Anaheim, Calif. **N**
City of Anaheim **L**
HOK **CO**
BuroHappold **A**
Clark Construction **E**
GC



Helix Electric overcame significant delays and challenges while working on this iconic transportation center, finishing on time and within budget through novel approaches such as the use of climbing electricians.

ELECTRICAL: COMMERCIAL LESS THAN \$2 MILLION

HELIX ELECTRIC

Asurion at Montecito Pointe **C**
Las Vegas, Nev. **N**
Asurion Insurance Services, Inc. **L**
David A. Bailey **CO**
Kraemer Consulting Engineers **A**
E



Helix overcame significant schedule challenges to accomplish a fast-track phased completion of a 90,000-square-foot call center with portions delivering in less than 45 days to allow employee training to begin while the call center was completed.

Eagle Winners

Specialty Contractor Categories



Trio self-performed 90 percent of the electrical work on this six-story office building and five-story precast garage tied into existing structures, also featuring a renovated lobby, 1,750-kilowatt diesel generator and 2000A data center with a modular busway.

ELECTRICAL: COMMERCIAL \$2 TO \$10 MILLION

- C** **TRIO ELECTRIC, LTD.**
- N** CB&I Office Building and Parking Garage
- L** The Woodlands, Texas
- CO** Chicago Bridge & Iron (CB&I)
- A** Ziegler Cooper
- E** DBR
- GC** Balfour Beatty Construction

**PRODUCTIVITY AWARD
WINNER**



ISC maximized efficiency on this 16-week job in a tight workspace by keeping manpower at a peak of 40—ultimately finishing on budget and contributing more than 15,000 manhours without a recordable incident.

ELECTRICAL: INDUSTRIAL LESS THAN \$2 MILLION

- C** **ISC CONSTRUCTORS, LLC**
- N** Evonik Power Play Project
- L** Theodore, Ala.
- CO** Evonik
- E** Evonik



MMR Constructors handled electrical system installation and integration on this standalone chemical plant, recording zero incidents over 85,000 manhours and dealing with the complexities of working alongside other contractors and craft professionals.

ELECTRICAL: INDUSTRIAL \$2 TO \$10 MILLION

- C** **MMR CONSTRUCTORS, INC.**
- N** BASF Solitaire Project
- L** Geismar, La.
- CO** BASF Corporation
- E** Worley Parsons



Eagle Winners

Specialty Contractor
Categories

EXTERIOR FINISHES

HALEY-GREER, INC. **C**
The Treehouse **N**
Houston, Texas **L**
Metro National **CO**
Studio RED Architects **A**



Haley-Greer design-built this two-story office and meeting facility with a skin comprised of glass, wood and stone—creating a modern day treehouse boasting Double Platinum LEED certification.

EXTERIORS: MASONRY, PRECAST OR STONE

PREMIER STONEWORKS, LLC **C**
Barnett Residence **N**
Fort Lauderdale, Fla. **L**
Jim Barnett **CO**
Smith Architectural Group **A**
Carmo Engineering Associates, Inc. **E**
The Marker Group, LLC **GC**



Due to the complexity of the custom carvings on this majestic residence, Premier Stonework's team had to work together to bring this project in on time, exceeding the customer's expectations for quality and performance.

INTERIOR FINISHES

PRECISION WALLS, INC. **C**
MetLife **N**
Cary, N.C. **L**
Highwoods Properties, Inc. **CO**
Alliance Architecture **A**
Structural Engineer: LCH Structural Engineers **E**
MEP: Barrett, Woodyard & Associates, Inc. **E**
Brasfield & Gorrie, LLC **GC**



Precision Walls had to coordinate many custom products with long lead times as part of the construction of twin 213,500-square-foot office buildings featuring writable walls, glass-enclosed meeting spaces and other amenities designed to foster flexibility and collaboration among more than 1,000 MetLife employees.

Eagle Winners

Specialty Contractor Categories



INTERIORS: ACOUSTICAL, DRYWALL, MILLWORK OR PLASTER

- C** **SPACECON SPECIALTY CONTRACTORS**
- N** Denver International Airport South Terminal Redevelopment Program
- L** Denver, Colo.
- CO** City and County of Denver
- A** Gensler
- E** S. A. Miro



Spacecon performed over 210,000 manhours without a recordable incident on Denver International Airport's hotel and transit center project—overcoming scaffolding, framing and ceiling challenges with the sky lobby and escalators, as well as a union campaign waged against the firm.



MECHANICAL

- C** **TDINDUSTRIES, INC.**
- N** UT Southwestern William P. Clements Jr. University Hospital
- L** Dallas, Texas
- CO** University of Texas Southwestern Medical Center
- A** RTKL Associates, Inc.
- E** Smith Seckman Reid, Inc. (SSR)
- GC** Hunt Construction Group/AECOM



PRODUCTIVITY AWARD WINNER

Logging 963,000 safe manhours, TDIndustries leveraged prefabrication, BIM and lean processes on its mechanical and plumbing design-assist work that allowed the owner to occupy this new 1.3 million-square-foot hospital four months ahead of schedule.



MECHANICAL: COMMERCIAL LESS THAN \$2 MILLION

- C** **SPC MECHANICAL**
- N** Southeastern Baptist Theological Seminary Steam Plant Decentralization
- L** Wake Forest, N.C.
- CO** Southeastern Baptist Theological Seminary

SPC served as the design-build mechanical contractor to decentralize Southeastern Baptist Theological Seminary's steam heating system by providing new energy-efficient heating sources to a large portion of the campus, resulting in 30 percent annual cost savings.

Eagle Winners

Specialty Contractor
Categories

MECHANICAL: COMMERCIAL \$2 TO \$10 MILLION

WALDROP MECHANICAL SERVICES

Clemson University Memorial Stadium Suites Renovation
Clemson, S.C. **C**
Clemson University **N**
LS3P Associates, Ltd. **L**
RMF Engineering, Inc. **CO**
Turner Construction Company **A**
E
GC



Waldrop provided HVAC and plumbing design-assist services for Clemson's \$4.8 million football stadium renovation—adhering to a strict 27-week schedule and installing more than 5.5 miles of copper piping.

OTHER SPECIALTY CONSTRUCTION: COMMERCIAL - MORE THAN \$1 MILLION

BIG D METALWORKS

Rory Meyers Children's Adventure Garden
Dallas, Texas **C**
The Dallas Arboretum and Botanical Society, Dallas **N**
Dattner Architects, NYC **L**
Datum Engineers **CO**
The BECK Group **A**
E
GC



Big D maximized teamwork and utilized creative delivery systems to design, fabricate and install unique architectural metals throughout 22 galleries within a complex learning garden.

OTHER SPECIALTY CONSTRUCTION: INDUSTRIAL - LESS THAN \$25 MILLION

STANDARD CONSTRUCTORS, INC.

LHC-9 Concrete Piling Installation
Freeport, Texas **C**
FLUOR **N**
FLUOR **L**
FLUOR **CO**
FLUOR **E**
FLUOR **GC**



Standard Constructors overcame harsh conditions, unexpected delays and critical time constraints to drive more than 3,000 piles on the LHC-9 block of DOW's Gulfstream project—completing the monumental task safely, precisely and within the designated six-month time frame.

Eagle Winners

Specialty Contractor
Categories



This design-build civil and environmental restoration project required Kwest Group to navigate live firing schedules and unexploded ordinances while repairing and rehabilitating century-old storm drainage and lagoon systems at Camp Perry, Ohio.

SITework/LANDSCAPE/HARDSCAPE

- C** **KWEST GROUP, LLC**
- N** Camp Perry - Storm Drainage Rehabilitation
- L** Port Clinton, Ohio
- CO** Ohio Army National Guard
- E** Kusmer and Associates, Inc.

Eagle Winners

General Contractor/
Construction
Management
Categories



Yates upgraded interior finishes and MEP systems for approximately 20,000 square feet of office and meeting space, resulting in a LEED Silver-certified building that is 30 to 35 percent more energy- and water-efficient than a standard code-compliant building.

COMMERCIAL - LESS THAN \$5 MILLION

- C** **YATES CONSTRUCTION**
- N** United Cooperative Services Hood County Office
- L** Granbury, Texas
- CO** United Cooperative Services
- A** Perkins+Will
- E** Baird, Hampton & Brown



Eagle Winners

General Contractor/
Construction
Management
Categories

COMMERCIAL - \$5 TO \$10 MILLION

WHITE CONSTRUCTION COMPANY **C**
Special Olympics Texas **N**
Austin, Texas **L**
Special Olympics Texas, Inc. **CO**
Jackson Galloway Associates, LLC **A**



Within a tight budget, White Construction re-engineered an outdoor steel structure as a beautiful pergola, providing a restful and scenic space for Special Olympics Texas staff and athletes.

COMMERCIAL - \$10 TO \$25 MILLION

AUI **C**
Holt Cat Sales & Service Facility **N**
Little Elm, Texas **L**
Holt Cat **CO**
Acuform Architecture **A**
BEFCO **E**



On this design-build job totaling more than 70,000 square feet among five structures, AUI initiated a new prototypical plan resulting in a leaner, expedited project as well as operational efficiencies for the owner.

COMMERCIAL - \$25 TO \$100 MILLION

HOAR CONSTRUCTION, LLC **C**
Bridge Street Town Centre Phase III **N**
Huntsville, Ala. **L**
Miller Capital Advisory **CO**
CMH Architects, Inc. **A**
Structural Design Group, Inc. **E**



As general contractor on the third phase of an upscale lifestyle center expansion, Hoar had to drain a lake and install a new retaining wall in addition to constructing a 903-car parking deck, four retail buildings and the pad for a 170,000-square-foot department store.

Eagle Winners

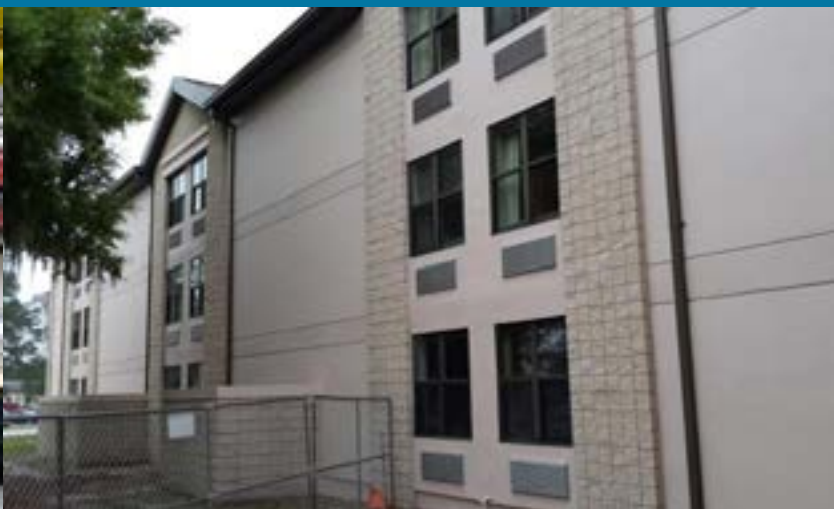
General Contractor/
Construction
Management
Categories



Hoar donated its general contracting services to build the first facility solely dedicated to PreSchool Partners, a nonprofit helping at-risk children and their families in inner-city Birmingham, Ala.

COMMUNITY / PUBLIC SERVICE (GC)

- C** **HOAR CONSTRUCTION, LLC**
- N** PreSchool Partners
- L** Birmingham, Ala.
- CO** PreSchool Partners/Capstone Real Estate Investments
- A** Pete Pritchard Architects
- E** MAK Engineering/Eldeco/RJ Mechanical



On this housing renovation project for the U.S. Navy, CMS designed and built a more direct air flow system to improve air quality in the living quarters and leverage sustainability for lower costs and environmental impact.

FEDERAL GOVERNMENT/MILITARY LESS THAN \$10 MILLION

- C** **CMS CORPORATION**
- N** Repair Bachelor Quarters 846
- L** Jacksonville, Fla.
- CO** NAVFAC Southeast
- A** ARCADIS-US, Inc.
- E** ARCADIS-US, Inc.



FEDERAL GOVERNMENT/MILITARY \$10 TO \$100 MILLION

- C** **BRASFIELD & GORRIE, LLC**
- N** Wallace Creek North Bachelors Enlisted Quarters (BEQ) & Armory Complex
- L** Jacksonville, N.C.
- CO** Naval Facilities Engineering Command-Mid Atlantic, Marine Corps IPT
- A** RQ Construction, LLC
- E** Stueven Engineering

Under a design-build contract, Brasfield & Gorrie and RQ Construction overcame a historic amount of rain during construction and the challenge of working on an active Marine Corps base to complete this LEED Gold, best-in-class living environment for U.S. Marines.



**GREENER TOMORROW
AWARD WINNER**

**DESIGN-BUILD INSTITUTE
OF AMERICA AWARD WINNER**

Eagle Winners

General Contractor/
Construction
Management
Categories

HEALTH CARE - LESS THAN \$10 MILLION

NOR-SON, INC. C

CRMC/MHI Baxter Clinic N

Baxter, Minn. L

Mortenson Construction CO

HDR A



Integrated teamwork was the key to Nor-Son's success constructing a 22,000-square-foot clinic within budget and a fast-track delivery framework that included multiple contracts and key stakeholders.

HEALTH CARE - \$10 TO \$25 MILLION

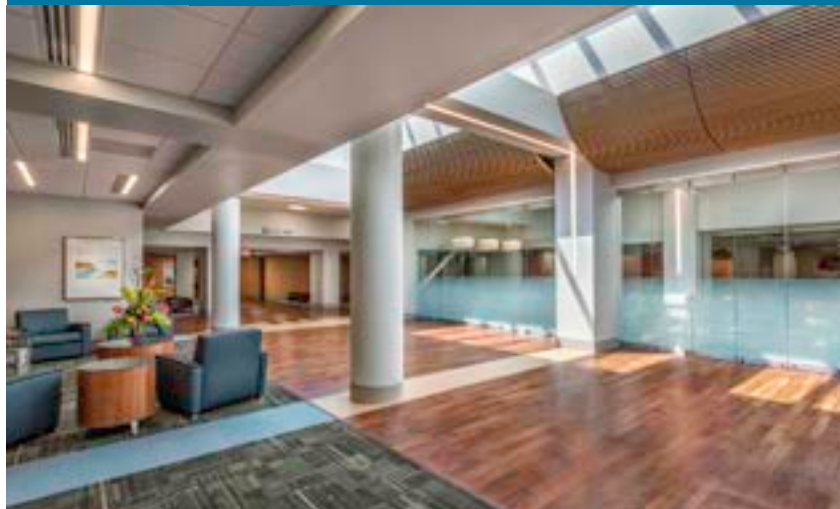
RODGERS BUILDERS, INC. C

Self Regional Hospital - Old Main Demolition,
Cafeteria, Laboratory and Main Corridor Renovations N
Greenwood, S.C. L

Self Regional Healthcare CO

LS3P Associates, Ltd. A

ADC Engineering, Inc. and DWG Consulting Engineers E



Rodgers Builders and its construction team leveraged technology and collaboration to transform an aging structure into a modern, efficient health care facility, with work occurring in the heart of a fully operational hospital campus.

HEALTH CARE - \$25 TO \$100 MILLION

BRASFIELD & GORRIE, LLC C

WakeMed North Women's Hospital Expansion N

Raleigh, N.C. L

WakeMed Health & Hospitals CO

BBH Design A

Dewberry and Milkey Engineers & Consultants E



Brasfield & Gorrie logged 560,000 manhours to deliver this complex women's hospital project on time, within budget and without interrupting campus services—overcoming obstacles through teamwork, planning and intricate scheduling.

Eagle Winners

General Contractor/
Construction
Management
Categories



SpawGlass breathed new life into this iconic 1930s building to help revitalize downtown Port Arthur, restoring unique atrium, ceiling, window and bank vault elements to meet Texas Historical Commission standards.

HISTORICAL RESTORATION/RENOVATION LESS THAN \$10 MILLION

- C** SPAWGLASS CONSTRUCTION CORP.
- N** Port Arthur Savings Renovation
- L** Port Arthur, Texas
- CO** Port Arthur Economic Development Corporation
- A** Haddon+Cowan Architects Collaborative



Doster's renovation of a 108-year-old high-rise involved working on a tight urban site and transforming the building for corporate and mixed-use tenants with the help of 3-D laser scanning and other innovative technology.

HISTORICAL RESTORATION/RENOVATION OVER \$10 MILLION

- C** DOSTER CONSTRUCTION COMPANY, INC.
- N** Van Antwerp Building Renovation
- L** Mobile, Ala.
- CO** The Retirement Systems of Alabama
- A** Goodwyn, Mills and Cawood, Inc.
- E** Thompson Engineering, Inc.



Cajun worked nearly 112,000 incident- and injury-free manhours while installing 9,625 cubic yards of structural concrete—including a multi-leveled cooling tower that required a specially engineered sheet pile shoring system—to meet CF Industries' capacity expansion schedule.

INDUSTRIAL - \$5 TO \$15 MILLION

- C** CAJUN CONSTRUCTORS, LLC
- N** CF Industries - Capacity Expansion Project
- L** Donaldsonville, La.
- CO** CF Industries Nitrogen, LLC
- E** ThyssenKrupp UHDE



Eagle Winners

General Contractor/
Construction
Management
Categories

INDUSTRIAL - \$15 TO \$25 MILLION

GROUP CONTRACTORS, LLC **C**
New Buildings, Methanex Corp. **N**
Geismar, La. **L**
Methanex Louisiana, LLC **CO**
Jacobs **A**
Jacobs **E**



GROUP Contractors managed repeated work stoppages and revisions to the critical path while erecting 12 buildings of varied composition for the relocation of an expansive methanol facility from Chile to Louisiana.

INDUSTRIAL - \$25 TO \$100 MILLION

PERFORMANCE CONTRACTORS, INC. **C**
Baytown Lubes Expansion Project **N**
Baytown, Texas **L**
ExxonMobil **CO**
Jacobs **E**



Performance Contractors logged 663,000 safe manhours while installing 34 pieces of equipment, 520 tons of steel and 39,000 feet of pipe to expand ExxonMobil's lube oil production capacity—maintaining the completion date amid 70 percent scope growth.

INFRASTRUCTURE: HEAVY

CIANBRO CORPORATION **C**
Bates Bridge Replacement **N**
Groveland & Haverhill, Mass. **L**
Massachusetts Department of Transportation **CO**
HNTB Corporation **E**



Despite four years of challenging weather conditions and environmental restrictions, Cianbro devised cost-saving solutions to complete this bridge replacement on schedule, with zero lost-time injuries and with the support of surrounding communities.

Eagle Winners

General Contractor/
Construction
Management
Categories



DonahueFavret overcame numerous obstacles to renovate a historic New Orleans building to house Tulane University's LEED Gold-certified School of Social Work, offering nearly 20,000 square feet of study, classroom and meeting spaces.

INSTITUTIONAL - LESS THAN \$5 MILLION

- C** **DONAHUEFAVRET CONTRACTORS, INC.**
- N** Tulane School of Social Work
- L** New Orleans, La.
- CO** Tulane University
- A** Eskew+Dumez+Ripple, APC
- E** Huseman & Associates, LLC



Harsh weather and poor soil conditions didn't stop Brasfield & Gorrie from completing this new church—featuring classrooms, a fellowship concourse and an 800-seat sanctuary—on time, under budget and with a 69 percent local workforce.

INSTITUTIONAL - \$5 TO \$10 MILLION

- C** **BRASFIELD & GORRIE, LLC**
- N** Highlands Presbyterian Church
- L** Ridgeland, Miss.
- CO** Highlands Presbyterian Church
- A** CDFL & LS3P Associates, Ltd.



Adolfson & Peterson performed this occupied renovation and addition in a location with freezing temperatures three-quarters of the year, transforming a rundown school into a 21st century learning environment and the community's first LEED-certified building.

INSTITUTIONAL - \$10 TO \$25 MILLION

- C** **ADOLFSON & PETERSON CONSTRUCTION**
- N** Lake County High School Addition and Renovations
- L** Leadville, Colo.
- CO** Lake County School District No. R-1
- A** H+L Architecture
- E** ME Engineers



Eagle Winners

General Contractor/
Construction
Management
Categories

INSTITUTIONAL \$25 TO \$100 MILLION

R.C. MATHEWS CONTRACTOR, LLC

Belmont University Wedgewood Academic Center
Nashville, Tenn.
Belmont University
ESa (Earl Swensson Associates)
Ross Bryan Associates, Inc. (Structural Engineer)
& I.C. Thomasson Associates, Inc. (Mechanical,
Electrical, Plumbing Engineer)

C
N
L
CO
A
E

GREENER TOMORROW
AWARD WINNER



Extensive preconstruction, BIM coordination and stakeholder collaboration from the initial stages of the project helped R.C. Mathews create this LEED Platinum-certified academic center atop a five-level underground parking garage in the heart of Belmont University's campus.

MEGA-PROJECTS \$100 MILLION TO \$199 MILLION

CHOATE CONSTRUCTION COMPANY

Marsico Hall at the University of North Carolina
Chapel Hill
Chapel Hill, N.C.
University of North Carolina - Chapel Hill School
of Medicine & School of Pharmacy
Perkins + Will
Newcomb & Boyd Consultants and Engineers

C
N
L
CO
A
E



Choate led the five-year effort to construct a 343,000-square-foot LEED Silver-certified imaging and research building for the University of North Carolina, using BIM coordination, comprehensive planning and rigorous safety methods to achieve zero lost-time accidents.

MEGA-PROJECTS - OVER \$200 MILLION

TIC - THE INDUSTRIAL COMPANY

Goldstrike TCM Leach Project
Carlin, Nev.
Barrick Goldstrike Mines Inc.
Ausenco

C
N
L
CO
E



Although its contract expanded by 242 percent, TIC – The Industrial Company still met the owner's original schedule to install a patented resin-in-leach process and complete the structural, mechanical, piping, electrical and instrumentation scopes of work at one of North America's largest gold mines.

Eagle Winners

General Contractor/
Construction
Management
Categories



Milender White overcame formidable challenges due to spring flooding and dense wetlands while erecting a 149-foot guyed scientific data collection tower and instrument hut deep within the Choctaw National Wildlife Refuge in southwest Alabama.

OTHER CONSTRUCTION LESS THAN \$2 MILLION

- C** **MILENDER WHITE CONSTRUCTION CO.**
- N** Lenoir Landing Tower
- L** Gilbertown, Ala.
- CO** National Ecological Observatory Network (NEON)
- A** LEO A DALY
- E** Paul J. Ford and Company



Despite site constraints, including a high-voltage power line running through the center of the jobsite, Brasfield & Gorrie successfully managed construction of the largest college video board—reducing a typical 10-month structural scope to just over six months.

OTHER CONSTRUCTION \$2 TO \$100 MILLION

- C** **BRASFIELD & GORRIE, LLC**
- N** Jordan-Hare South End Zone Modifications Project (Auburn University)
- L** Auburn, Ala.
- CO** Auburn University - Facilities Division
- A** LBYD, Inc. - Civil & Structural Engineers
- E** LBYD, Inc. - Civil & Structural Engineers
- GC** Rabren General Contractors



**PRODUCTIVITY AWARD
WINNER**



Regal Construction provided turnkey design-build services to construct four critical structures in the heart of Marathon's half-million-barrel-per-day refinery. Totalling 42,000-square-feet, the blast-resistant buildings include 35 offices, four conference rooms and more than 20,000 square feet of fabrication shops.

PRE-ENGINEERED BUILDING

- C** **REGAL CONSTRUCTION, LLC**
- N** Marathon Petroleum Garyville Refinery Support Buildings
- L** Garyville, La.
- CO** Marathon Petroleum Company, LP
- A** Scairono-Martinez Architects, Inc.

Eagle Winners

General Contractor/
Construction
Management
Categories

PUBLIC WORKS/ENVIRONMENTAL

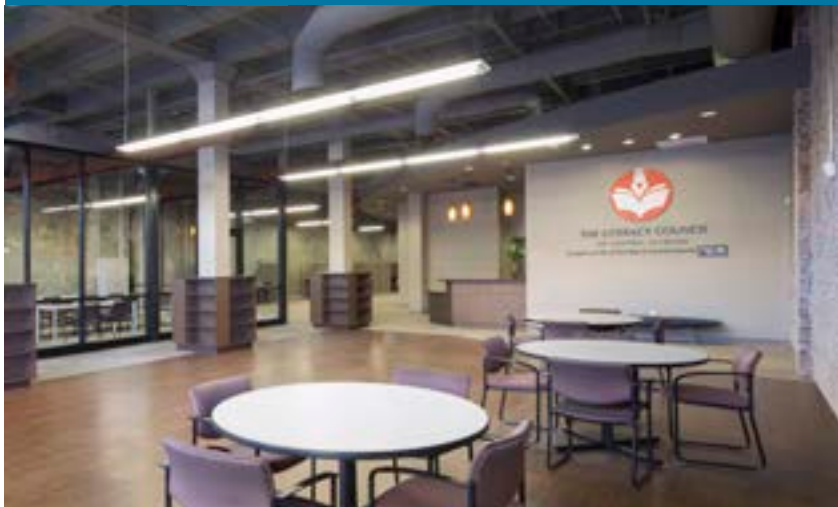
BLACK CONSTRUCTION CORPORATION **C**
Guam Commercial Port Improvement Program - **N**
Facility Expansion
Piti, Guam **L**
USDOT Maritime Administration (MARAD) for the Port **CO**
Authority of Guam
EA Engineering, Science, & Technology, Inc./ **A**
AM Orient Engineering
EA Engineering, Science and Technology, Inc./ **E**
TG Engineers/GHD



Black Construction expanded and upgraded Guam's commercial port, including a new container yard, fire water tank and pumps, power generation and distribution, stormwater control, site utilities, and the disposal of contaminated soil and water during ongoing port operations and without safety incident.

RENOVATION - LESS THAN \$4 MILLION

BRASFIELD & GORRIE, LLC **C**
The Literacy Council of Central Alabama **N**
Birmingham, Ala. **L**
The Literacy Council of Central Alabama **CO**
Goodwyn Mills and Cawood **A**



Brasfield & Gorrie developed a cost-effective program for rebuilding 8,000 square feet of a fire-damaged office, wrapping up the project under budget and two weeks early.

RENOVATION - \$4 TO \$10 MILLION

HOAR CONSTRUCTION, LLC **C**
Cathedral of Saint Paul **N**
Birmingham, Ala. **L**
Cathedral of St. Paul **CO**
ArchitectureWorks, LLP **A**



Hoar used a custom scaffolding system to complete a renovation of the Cathedral of St. Paul under budget and ahead of schedule despite expansions to the initial scope of work and challenges related to the building's age, condition and gothic design.

Eagle Winners

General Contractor/
Construction
Management
Categories



In this design-build renovation for a community nonprofit health provider, Wohlsen Construction overcame a variety of challenges to provide a new medical and dental clinic in what was once an abandoned building on a contaminated brownfield site.

RENOVATION - \$10 TO \$100 MILLION

- C** **WOHLSEN CONSTRUCTION COMPANY**
- N** Hamilton Health Center
- L** Harrisburg, Pa.
- CO** Hamilton Health Center Community Services, Inc.
- A** Murray Associates Architects, P.C.
- E** Raudenbush Engineering, Inc.



**GREENER TOMORROW
AWARD WINNER**

**DESIGN-BUILD INSTITUTE
OF AMERICA AWARD WINNER**



Hoar navigated an urban site—working to prevent disruption to adjacent homeowners and retailers—while demolishing existing apartments to make way for a new 400,000-square-foot complex with 276 luxury residences.

RESIDENTIAL: MULTI-FAMILY AND CONDOMINIUM PROJECTS UP TO \$100 MILLION

- C** **HOAR CONSTRUCTION, LLC**
- N** Lane Parke Apartments
- L** Mountain Brook, Ala.
- CO** Daniel Corporation/Evson, Inc.
- A** Wakefield Beasley & Associates Architects
- E** McVeigh & Mangum Engineering, Inc./
Goodwyn, Mills, & Cawood



RESIDENTIAL: SINGLE-FAMILY PROJECTS UP TO \$100 MILLION

- C** **NOR-SON, INC.**
- N** Forever Estate
- L** Minnetrista, Minn.
- CO** Private Owner
- A** Nor-Son, Inc.



Already working within a compressed schedule, Nor-Son overcame a number of site conditions and accessibility issues in order to design and build this 7,314-square-foot estate in time for the Luxury Home Tour.

Pyramid Winners

Specialty Contractor Categories



ELECTRICAL

C **ISC CONSTRUCTORS, LLC**

- N Motiva Flare Vapor Recovery Project
- L Norco, La.
- CO Motiva Enterprises
- A Jacobs Field Services of North America
- E Jacobs Field Services of North America
- GC Jacobs Field Services of North America



ELECTRICAL: COMMERCIAL - LESS THAN \$2 MILLION

C **HELIX ELECTRIC**

- N Peace Palace - T.I. & Shell
- L Las Vegas, Nev.
- CO Bermuda Road Properties LLC
- A John David Burke, Architect
- E Harris Consulting Engineers



ELECTRICAL: COMMERCIAL - \$2 TO \$10 MILLION

C **THE TRI-M GROUP, LLC**

- N Alfred I. duPont Hospital for Children Pavilion
- L Wilmington, Del.
- CO The Nemours Foundation
- A FKP Architects
- E AIE Affiliated Engineers
- GC Skanska



ELECTRICAL: INDUSTRIAL - LESS THAN \$2 MILLION

C **TRIAD ELECTRIC & CONTROLS, INC.**

- N Shell BOOST Project
- L Robert, La.
- CO Shell Upstream Americas
- A Polaris Construction
- E Polaris Construction



ELECTRICAL: INDUSTRIAL - \$2 TO \$10 MILLION

C **INTERSTATES COMPANIES**

- N Renewable Energy Group Biodiesel Refinery
- L Mason City, Iowa
- CO Renewable Energy Group
- E Interstates Companies (Electrical Engineering Firm)



ELECTRICAL: INDUSTRIAL - \$2 TO \$10 MILLION

C **TRIAD ELECTRIC & CONTROLS, INC.**

- N West Yard Coal Conveyor Controls Package
- L Darrow, La.
- CO Impala Warehousing
- A Moffatt & Nichol
- E Triad Control Systems

INTERIOR FINISHES

C **DAVID ALLEN COMPANY, INC.**

- N Grandview Medical Center
- L Birmingham, Ala.
- CO Community Health Systems Professional Services Corporation
- A Earl Swenson Associates, Inc.
- E Earl Swenson Associates, Inc.
- GC Brasfield & Gorrie, LLC

INTERIORS: ACOUSTICAL, DRYWALL, MILLWORK OR PLASTER

C **BAKERTRIANGLE**

- N Tobin Center for the Performing Arts
- L San Antonio, Texas
- CO Bexar County Performing Arts Center Foundation
- A LMN Architects with Marmon Mok Architecture
- GC Linbeck/Zachry (Joint Venture)

INTERIORS: ACOUSTICAL, DRYWALL, MILLWORK OR PLASTER

C **PRECISION WALLS, INC.**

- N Talley Student Union
- L Raleigh, N.C.
- CO North Carolina State University
- A Duda Paine Architects
- E Stewart Engineering
- GC Rodgers Builders



MECHANICAL

C **RK MECHANICAL**

- N Denver International Airport Westin Hotel
- L Denver, Colo.
- CO Denver International Airport, City and County of Denver
- A Gensler Architects
- E M-E Engineers
- GC Mortenson and Hunt Construction Group



MECHANICAL

C **TDINDUSTRIES, INC.**

- N ExxonMobil Campus Project
- L Spring, Texas
- CO ExxonMobil Corporation
- A Pickard Chilton
- E Cosentini Associates
- GC Gilbane/Harvey (Joint Venture)

MECHANICAL: COMMERCIAL - LESS THAN \$2 MILLION

C **MTECH MECHANICAL**

- N International Broadcast Center at the 2015 FIS Alpine World Ski Championships
- L Beaver Creek, Colo.
- CO NUSSLI
- A NUSSLI
- E Beaudin Ganze Consulting Engineers, Inc. (BGCE)
- GC NUSSLI



MECHANICAL: COMMERCIAL - \$2 TO 10 MILLION

C **TDINDUSTRIES, INC.**

- N Sundance Square Plaza
- L Fort Worth, Texas
- CO Sundance Square
- A Bennett Benner Pettit
- E Summit Consultants, Inc.
- GC The Beck Group

MECHANICAL: INDUSTRIAL

C **MANHATTAN MECHANICAL SERVICES**

- N Safety Kleen Blend Tank Phase 1 & 2
- L East Chicago, Ind.

Pyramid Winners

General Contractor/Construction Management Categories

OTHER SPECIALTY CONSTRUCTION: COMMERCIAL LESS THAN \$1 MILLION

C ALPINE PAINTING & SANDBLASTING CONTRACTORS

- N Somerset Patriots Baseball Stadium - TD Bank Park
- L Bridgewater, N.J.
- GC Somerset Patriots

OTHER SPECIALTY CONSTRUCTION: COMMERCIAL LESS THAN \$1 MILLION

C AGGREGATE TECHNOLOGIES, INC.

- N Lakewood Church Fifth Floor Modifications
- L Houston, Texas
- GC Lakewood Church, Joel Osteen Ministries
- GC Tellepsen Builders, L.P.

OTHER SPECIALTY CONSTRUCTION: COMMERCIAL MORE THAN \$1 MILLION

C GENERAL EXCAVATING

- N Nebraska Innovation Campus - Centralized Renewable Energy System
- L Lincoln, Neb.
- GC Tetrad Property Group
- E Olsson Associates
- GC Kiewit Building Group

OTHER SPECIALTY CONSTRUCTION: INDUSTRIAL LESS THAN \$25 MILLION

C GREYSTONE CONSTRUCTION COMPANY

- N CHS Dry Fertilizer Storage & Blending Facility
- L St. Charles, Minn.
- GC CHS
- A VAA
- E VAA

OTHER SPECIALTY CONSTRUCTION: INDUSTRIAL LESS THAN \$25 MILLION

C WAYNE BROTHERS, INC.

- N Sierra Nevada Brewery
- L Fletcher, N.C.
- GC Sierra Nevada Brewing Company
- A Russell, Gallaway & Associates, Inc.
- E Russell, Gallaway & Associates, Inc.

SITework/LANDSCAPE/HARDSCAPE

C DURR HEAVY CONSTRUCTION, LLC

- N Iberville Onsite and Rights of Way Phase 1 & 2
- L New Orleans, La.
- GC Housing Authority of New Orleans and HRI Properties, LLC
- A HCI Architecture, Inc.
- E Schrenk Endom & Flanagan LLC

COMMERCIAL - \$5 TO \$10 MILLION

C CONSOLIDATED CONSTRUCTION CO., INC.

- N Holiday Inn - Bismarck, N.D.
- L Bismarck, N.D.
- GC Dora Hospitality
- A Cities Edge Architects
- E Bartlett & West, Inc.

COMMERCIAL - \$5 TO \$10 MILLION

C WARFEL CONSTRUCTION COMPANY

- N Audi Devon
- L Devon, Pa.
- GC YBH Audi Auto Group
- A Penney Design Group
- E Dunlap Engineering, Inc.

COMMERCIAL - \$10 TO \$25 MILLION

C E.E. REED CONSTRUCTION, L.P.

- N Sierra Pines Phase II
- L The Woodlands, Texas
- GC Stream Realty Partners
- A Powers Brown Architecture
- E LJB, Inc.

COMMERCIAL - \$25 TO \$100 MILLION

C HOAR CONSTRUCTION, LLC

- N Avalon
- L Alpharetta, Ga.
- GC North American Properties
- A Wakefield Beasley & Associates
- E Kimley-Horn

COMMUNITY / PUBLIC SERVICE (GC)

C LANDIS CONSTRUCTION CO., LLC

- N YAYA Arts Center
- L New Orleans, La.
- GC YAYA, Inc.
- A BILD DESIGN, LLC

FEDERAL GOVERNMENT/MILITARY - \$10 TO \$100 MILLION

C ROY ANDERSON CORP

- N VA Medical Center Laundry - Dietetics Building
- L Biloxi, Miss.
- GC Department of Veteran Affairs
- A Blitch Knevel/Leo A Daly (Joint Venture)

HEALTH CARE - LESS THAN \$10 MILLION

C HITT CONTRACTING INC.

- N The George Washington University Hospital Radiation Oncology Center
- L Washington, D.C.
- GC Universal Health Services, Inc.
- A WJ Architects, LLC
- E ccrd partners

HEALTH CARE - \$10 TO \$25 MILLION

C DPR CONSTRUCTION

- N Boca Raton Regional Hospital Christine E. Lynn Women's Health & Wellness Institute
- L Boca Raton, Fla.
- GC Boca Raton Regional Hospital
- A HKS
- E DeSimone Consulting Engineers

Pyramid Winners

General Contractor/Construction Management Categories

HEALTH CARE - \$25 TO \$100 MILLION

C ROBINS & MORTON

N Florida Hospital Tampa

L Tampa, Fla.

CO Florida Hospital West Florida Region

A HuntonBrady Architects

E EXP Engineers

HISTORICAL RESTORATION/RENOVATION LESS THAN \$10 MILLION

C BRASFIELD & GORRIE, LLC

N Highlands United Methodist Church

L Birmingham, Ala.

CO Highlands United Methodist Church

A Architecture Works

HISTORICAL RESTORATION/RENOVATION OVER \$10 MILLION

C FORRESTER CONSTRUCTION COMPANY

N United Arab Emirates Chancery Annex

L Washington, D.C.

CO Embassy of the United Arab Emirates

A Anderson Cooper Group

E EK Fox and Associates, Ltd.

HISTORICAL RESTORATION/RENOVATION OVER \$10 MILLION

C FLINTCO, LLC

N The University of Texas at Austin FY11

Fire Life Safety & ITS Renovations

L Austin, Texas

CO The University of Texas System Office of Facilities

Planning and Construction

A Prime/Jacobs Historical/Architexas

E Jacobs

INDUSTRIAL - \$5 TO \$15 MILLION

C CIANBRO CORPORATION

N White Compressor Station

L Springville Township, Pa.

CO Williams Field Services, LLC

E Williams Companies

INDUSTRIAL - \$5 TO \$15 MILLION

C EXCEL CONTRACTORS, INC.

N BASF-DNT GSH Project

L Geismar, La.

CO BASF

E Worley-Parsons

INDUSTRIAL - \$15 TO \$25 MILLION

C GILBANE BUILDING COMPANY

N Walt Disney World® Resort Textile Services Laundry Facility

L Lake Buena Vista, Fla.

CO Walt Disney World® Resort

A Rhodes and Brito Architects

E C&S Engineering

INDUSTRIAL - \$25 TO \$100 MILLION

C BRASFIELD & GORRIE, LLC

N GE Aviation Assembly and Manufacturing Facility

L Lafayette, Ind.

CO Pure Development

A CSO Architects

E LBYP

INSTITUTIONAL - LESS THAN \$5 MILLION

C GIBBS CONSTRUCTION

N Mandeville Crossing - Reinventing the Crescent

L New Orleans, La.

CO City of New Orleans - New Orleans Building Corporation

A Eskew + Dumez + Ripple Architects

E Kulkarni Consultants

INSTITUTIONAL - \$5 TO \$10 MILLION

C ZARTMAN CONSTRUCTION, INC.

N Bucknell University Student Commons

L Lewisburg, Pa.

CO Bucknell University

A EYP Architecture/Engineering, PC

E Mid-Penn Engineering Corp.

INSTITUTIONAL - \$10 TO \$25 MILLION

C THE MULLAN CONTRACTING COMPANY

N McDonogh School - Edward St. John Student Center

L Owings Mills, Md.

CO McDonogh School

A Bowie Gridley Architects

E James Posey Associates

INSTITUTIONAL - \$10 TO \$25 MILLION

C RENTENBACH CONSTRUCTORS INCORPORATED

N University of Alabama in Huntsville College of Nursing Expansion and Renovation

L Huntsville, Ala.

CO University of Alabama in Huntsville

A Chapman Sisson Architects

E Pugh Wright McAnally Inc. (civil), Mims Engineering (mechanical), Jack R. Morgan Engineering Inc. (electrical)

INSTITUTIONAL - \$25 TO \$100 MILLION

C HENSEL PHELPS

N Smithsonian Environmental Research Center (SERC)

Charles McC. Mathias Laboratory

L Edgewater, Md.

CO Smithsonian Institution

A Ewing Cole

INSTITUTIONAL - \$25 TO \$100 MILLION

C BRASFIELD & GORRIE, LLC

N Wilford and Kate Bailey Small Animal Teaching Hospital (Auburn University)

L Auburn, Ala.

CO Auburn University - Facilities Management

A Foil Wyatt Architects & Planners PLLC

E LBYP, Inc. - Civil and Structural Engineers

GC Rabren General Contractors/Bradley Plumbing & Heating, Inc./Brendle Sprinkler Co./Auburn Electrical Construction Company, Inc.

Pyramid Winners

General Contractor/Construction Management Categories

MEGA-PROJECTS - \$100 MILLION TO \$199 MILLION

C CAJUN CONSTRUCTORS, LLC

- N** Methanex Geismar 1 and Geismar 2 Relocation Project - Site Prep and Civil Construction Services
- L** Geismar, La.
- CO** Methanex Corporation
- E** Jacobs Field Services North America, Inc.

MEGA-PROJECTS - \$100 MILLION TO \$199 MILLION

C S & B ENGINEERS AND CONSTRUCTORS, LTD.

- N** Lone Star NGL Fractionators, LLC Mariner South Export Frac
- L** Baytown, Texas
- CO** Lone Star NGL Fractionators, LLC
- E** S & B Engineers and Constructors, Ltd.

MEGA-PROJECTS - OVER \$200 MILLION

C MESSER CONSTRUCTION COMPANY

- N** Cincinnati Children's Hospital - Location T - Clinical Sciences Pavilion
- L** Cincinnati, Ohio
- CO** Cincinnati Children's Hospital Medical Center
- A** GBBN Architects, Inc.
- E** Fosdick and Hilmer Engineers/THP Limited

MEGA-PROJECTS - OVER \$200 MILLION

C MORTENSON CONSTRUCTION

- N** The New Saint Joseph Hospital
- L** Denver, Colo.
- CO** SCL Health
- A** ESJH Design Partnership (Joint venture including Davis Partnership, H+L Architects and ZGF Architects)
- E** Cator Ruma & Associates and Martin/Martin Consulting Engineers

OTHER CONSTRUCTION - LESS THAN \$2 MILLION

C HELIX ELECTRIC

- N** University of Nevada, Las Vegas MPE Photovoltaic Array System
- L** Las Vegas, Nev.
- CO** University of Nevada, Las Vegas Board of Regents
- E** Helix Electric

OTHER CONSTRUCTION - LESS THAN \$2 MILLION

C SYNERGY CONSTRUCTION, INC.

- N** Peters Place
- L** Seattle, Wash.
- CO** Compass Housing Alliance
- A** Stickney, Murphy and Romain Architects

OTHER CONSTRUCTION - \$2 TO \$100 MILLION

C RODGERS BUILDERS, INC.

- N** Daniel Stowe Botanical Garden - Lost Hollow: The Kimbrell Children's Garden
- L** Belmont, N.C.
- CO** Daniel Stowe Botanical Garden
- A** W. Gary Smith Design and Sitework Studios, PLLC

PRE-ENGINEERED BUILDING

C VOELKEL MCWILLIAMS CONSTRUCTION

- N** Friends Coastal Restaurant
- L** Madisonville, La.
- CO** Friends Coastal Restaurant
- A** Verges Rome Architects
- E** Morphy Makofsky, Inc.

PRE-ENGINEERED BUILDING

C GORSKI ENGINEERING, INC.

- N** Klover Contracting New Manufacturing Facility
- L** Quakertown, Pa.
- CO** Klover Contracting, Inc.
- A** Gorski Engineering, Inc.
- E** Gorski Engineering, Inc.

PUBLIC WORKS/ENVIRONMENTAL

C THE JOSEPH COMPANY, INC.

- N** Nominal 24.6 MW Power Plant Addition, Fairmont Energy Station
- L** Fairmont, Minn.
- CO** Southern Minnesota Municipal Power Agency (SMMPA)
- A** I&S Group
- E** Dewild Grant Reckert & Associates

RENOVATION - LESS THAN \$4 MILLION

C GORSKI ENGINEERING, INC.

- N** Best Made Center Suite #100
- L** Quakertown, Pa.
- CO** Best Made Center, LLC
- A** Gorski Engineering, Inc.
- E** Gorski Engineering, Inc.

RENOVATION - LESS THAN \$4 MILLION

C SYNERGY CONSTRUCTION, INC.

- N** City North Apartments
- L** Seattle, Wash.
- CO** FSC Realty, LLC
- A** Bumgardner

RENOVATION - \$4 TO \$10 MILLION

C SATTERFIELD & PONTIKES CONSTRUCTION

- N** Francis Hall Renovation
- L** College Station, Texas
- CO** Texas A&M University
- A** BRW Architects
- E** Jaster-Quintanilla

RENOVATION - \$10 TO \$100 MILLION

C RODGERS BUILDERS, INC.

- N** Central Carolina Technical College - Advanced Manufacturing Technology Training Center
- L** Sumter, S.C.
- CO** Central Carolina Technical College
- A** LS3P Associates, Ltd.
- E** RMF Engineering, Inc.

RESIDENTIAL: MULTI-FAMILY AND CONDOMINIUM PROJECTS UP TO \$100 MILLION

C HOAR CONSTRUCTION, LLC

- N** One Lakes Edge
- L** The Woodlands, Texas
- CO** Howard Hughes Corporation
- A** Ziegler Cooper
- E** Jordan & Skala Engineers

RESIDENTIAL: SINGLE-FAMILY PROJECTS UP TO \$100 MILLION

C SEBASTIAN CONSTRUCTION GROUP, LLC

- N** Malone Cliff Residence
- L** Dallas, Texas
- A** Booziotis & Company Architects
- E** Datum Engineers, Inc.

A Foundation Of Safety

2015 NATIONAL SAFETY EXCELLENCE AWARD RECIPIENTS

From exceptional safety records to rigorous training and education programs, winners of the National Safety Excellence Awards excelled in all areas of ABC's Safety Training Evaluation Process (STEP), demonstrating an extraordinary commitment to safety.

Panel of Judges

TROY ALLEN

Director of Safety
Primoris Services Corp.
Baton Rouge, La.

RICH BALDWIN

Corporate Director, HSE
PCL Construction Enterprises
Denver, Colo.

KEVIN CONVERSE

Director, Corporate Health & Safety
United Rentals
Vancouver, Wash.

PAT DUNWOODY, CAE, LEED AP

*2015 ABC Chapter Safety/Education
Staff Liaison*
Executive Vice President of Education
ABC Georgia Chapter
Atlanta, Ga.

DARYL GUERCIO

HSE Compliance Director
Chicago Bridge & Iron
The Woodlands, Texas

WILLIAM GOSS, OHST, APSS, UL-RRE

CNA Insurance Risk Control
Metairie, La.

MELANIE LAIRD

*2015 ABC Environment, Health & Safety
Committee Vice Chair*
Executive Vice President
FC Background, Inc.
Dallas, Texas

TONY LOMBARDI

Corporate Safety Director
Centennial Contractors Enterprises, Inc.
Reston, Va.

TODD MEEK

Vice President, Health, Safety & Environmental
Lauren Engineers & Constructors, Inc.
Abilene, Texas

RALPH RILEY

*Corporate Safety/Workforce Programs
Manager*
S & B Engineers and Constructors, Ltd.
Houston, Texas

JERRY RIVERA

Safety Director
National Electrical Contractors Association -
Washington, D.C. Chapter
Annandale, Va.

SHELLEY SUTTON

*2015 ABC Environment, Health & Safety
Committee Chairwoman*
Director of Shared Services
hth companies, inc.
Union, Mo.

JAMES K. THOMPSON, CSSM

EH&S Director
Kwest Group, LLC
Perrysburg, Ohio

STEVE WILTSHIRE

Regional Safety Manager
AvalonBay Communities, Inc.
Arlington, Va.

Pinnacle Winners

NAICS 236

GENERAL CONTRACTOR

RLS CONSTRUCTION GROUP
Mechanicsburg, Pa.

W.G. YATES & SONS CONSTRUCTION COMPANY 
Philadelphia, Miss.

D.E. HARVEY BUILDERS, INC.
Houston, Texas

NAICS 237

HEAVY AND CIVIL ENGINEERING CONTRACTOR

CIANBRO CORPORATION
Pittsfield, Maine

LAUREN ENGINEERS AND CONSTRUCTORS, INC.
Abilene, Texas

NAICS 238

SPECIALTY CONTRACTOR

HTH COMPANIES, INC. 
Union, Mo.

INTERSTATES COMPANIES 
Sioux Center, Iowa

KWEST GROUP, LLC
Perrysburg, Ohio

COLOR WORKS PAINTING, INC.
New Castle, Del.

Excellence Winners

NAICS 236

GENERAL CONTRACTOR

CMS CORPORATION
Bargersville, Ind.

SDV CONSTRUCTION, INC.
Albuquerque, N.M.

GILBANE BUILDING COMPANY
Providence, R.I.


THREE RIVERS CORPORATION
Midland, Mich.

CADELL CONSTRUCTION CO. 
Montgomery, Ala.

NAICS 237

HEAVY AND CIVIL ENGINEERING CONTRACTOR

CAJUN INDUSTRIES, LLC 
Baton Rouge, La.

NOVA GROUP, INC. 
Napa, Calif.

CB&I, OIL & GAS
The Woodlands, Texas

PCL INDUSTRIAL SERVICES, INC. 
Bakersfield, Calif.

STANDARD CONSTRUCTORS, INC.
Houston, Texas

PERFORMANCE CONTRACTORS, INC. 
Baton Rouge, La.

PCL INDUSTRIAL CONSTRUCTION COMPANY
Houston, Texas

TURNER INDUSTRIES GROUP, LLC 
Baton Rouge, La.

NAICS 238

SPECIALTY CONTRACTOR

ISC CONSTRUCTORS, LLC 

Baton Rouge, La.

MOBLEY INDUSTRIAL SERVICES, LLC


La Porte, Texas

NORTHERN ELECTRIC, INC. 

Thornton, Colo.

UNITED GROUP SERVICES 

Cincinnati, Ohio

LPR CONSTRUCTION 

Loveland, Colo.

COMFORT SYSTEMS OF VIRGINIA, INC.

Chesapeake, Va.

LANDSCAPE MANAGEMENT SYSTEMS, INC.

Tumon, Guam

Merit Winners

NAICS 236

GENERAL CONTRACTOR

BENCHMARK CONSTRUCTION COMPANY, INC. 

Brownstown, Pa.

CENTENNIAL CONTRACTORS ENTERPRISES, INC.

Reston, Va.

PINKARD CONSTRUCTION CO. 

Lakewood, Colo.

WOHLSSEN CONSTRUCTION COMPANY 

Lancaster, Pa.

PERFORMANCE SYSTEMS INC.

Waipahu, Hawaii

NAICS 237

HEAVY AND CIVIL ENGINEERING CONTRACTOR

COUTTS BROS. INC.

Randolph, Maine

BARRIERE CONSTRUCTION COMPANY, LLC

Metairie, La.

S & B ENGINEERS AND CONSTRUCTORS, LTD. 

Houston, Texas

NAICS 238

SPECIALTY CONTRACTOR

MKD ELECTRIC

Elgin, Ill.

AGGREGATE TECHNOLOGIES, INC. 

Houston, Texas

GFP CEMENT CONTRACTORS, LLC

Newport, Del.

IES COMMERCIAL

Holdrege, Neb.

Championing a Diverse Industry

2015 NATIONAL DIVERSITY EXCELLENCE AWARD RECIPIENTS

The ABC National Diversity Excellence Awards

recognize members that display exemplary
diversity leadership in their workforce, supply
chain and community with best-in-class
recruitment policies, retention practices and
training and mentoring programs.

Panel of Judges

LAMON C. HARRIS, LEED G.A.

Director Small Business Development
ABC Baltimore Metro Chapter
Towson, Md.

LENEE M. KOCH

Executive Vice President
LEI Companies, Inc.
Denver, Colo.

DEBBIE LIVINGSTON, CAE

President & CEO
ABC Metro Washington Chapter
Beltsville, Md.

LARRY LOPEZ

President
Green Job Works
Baltimore, Md.

KRISTEN M. RECTENWALD

Senior Assistant City Attorney
Aviation Practice Group
City of Atlanta Department of Law
Atlanta, Ga.

GENERAL CONTRACTOR UNDER \$33 MILLION

WU & ASSOCIATES

Mount Laurel, N.J.

GENERAL CONTRACTOR OVER \$33 MILLION

HENSEL PHELPS

Greeley, Colo.

SUBCONTRACTOR

MEC² 

Catonsville, Colo.

SUPPLIER & ASSOCIATE

UNITED RENTALS

Stamford, Conn.

Contractor of the Year Award



DAVID ALLEN COMPANY

Every year, ABC honors a company that shines above the rest for its corporate integrity, commitment to the professional development and safety of employees, dedication to expert craftsmanship and high esteem in the industry at large.

This year, ABC bestows the Contractor of the Year award on **David Allen Company**, Raleigh, N.C.

Founded in 1920, the company has grown to become one of the nation's largest marble, granite, terrazzo, tile and underlayment contractors, with nearly 500 employees and craft professionals.

Its stunning craftsmanship can be seen in the flooring and finishes of just about every major airport on the East Coast, including Ronald Reagan National Airport, Charlotte Douglas International Airport, Miami International Airport and Fort Lauderdale-Hollywood International Airport. The company also has helped transform numerous educational, government, hospitality, institutional, and medical interiors and exteriors into works of art through its meticulous eye for detail and museum-quality installation methods.

David Allen Company's foundation is built not only on the strengths of its experienced workforce, but also its industry relationships. Many of the company's craft professionals are second- and third-generation employees, while several of its general contracting partners have been doing business with the company for more than 75 years. The leadership team of Chairman Robert Roberson, CEO David Roberson, President Art Odom, Executive Vice President Martin Howard and Secretary-Treasurer Terry Preston collectively have more than 200 years of service with the company.

As a STEP Platinum company, yearly project award winner and activist on the political front, David Allen Company embodies the merit shop philosophy through and through.

2015 STEP Diamond Recipients

Aggregate Technologies, Inc.	Hayward Electric Company	PCL Industrial Construction Company
Amec Foster Wheeler	Hensel Phelps	PCL Industrial Services, Inc.
APAC-Texas, Inc.	HITT Contracting Inc.	Performance Contractors, Inc.
Ardent Services, LLC	Hoar Construction, LLC	Polk Mechanical Company
Balfour Beatty Construction	Holes Incorporated	Power Electric Co.
Barriere Construction Company, LLC	hth companies, inc.	QCI Thermal Systems
Big J Enterprises, LLC	I.E. - Pacific, Inc.	RCL Construction Co., Inc.
Blasy Electric, Inc.	ISC Constructors, LLC	Repcon, Inc.
Brasfield & Gorrie, LLC	Ivey Mechanical Company, LLC	Robert Heely Construction, LP
Braun Electric Company, Inc.	J & J Fire Protection Company, Inc.	Robinson Electric Co., Inc.
Broadmoor, LLC	JAMCo, Inc.	Rockford Construction Co.
Brock Services, LLC	Jarrett Construction Services, Inc.	Rodgers Builders, Inc.
BRYCON Construction	Jesco, Inc.	Rupe Building Company
Burton Construction	Johnston Products of Dallas, Inc.	RUS Industrial, LLC
Byrne Construction Services	Journeyman Construction, Inc.	S & B Engineers and Constructors, Ltd.
C. S. Beatty Construction, Inc.	Juneau Construction Company, LLC	S.E.T. - Pacific, Inc.
Cajun Industries, LLC	Kaplan Construction	Safway Services, LLC
Cam-Ful Industries, Inc.	KBR Building Group	Samet Corporation
Campbell Plumbing Contractors	Kostmayer Construction, LLC	Saulsbury Industries
CB&I	Kwest Group, LLC	SDV Construction, Inc.
Centennial Contractors Enterprises, Inc.	L. D. Kerns Contractors, Inc.	Shawhan Sheet Metal, LLC
Central Concrete Products	Langerak Roof Systems, Inc.	Skyline Technologies, LLC
CH2M Hill, Inc.	LaRosa Building Group, LLC	Southway Builders, Inc.
Chamberlin Dallas, Ltd.	Lauger Companies, Inc.	SpawGlass Contractors, Inc.
Cherry Companies	Lauren Engineers & Constructors, Inc.	SSI Incorporated
Cianbro Corporation	Lemco Construction Services, L.P.	Standard Constructors, Inc.
Citadel Builders, LLC	Lord & Son Construction, Inc.	STARCON International, Inc.
Civil Mechanical, Inc.	Lund-Ross Constructors, Inc.	Sturgeon Services International
CMS Corporation	M. Davis & Sons, Inc.	Swederski Concrete Construction, Inc.
Converse Conditioned Air, Inc.	M.C. Dean, Inc.	Tecta America Zero Company
D.E. Harvey Builders, Inc.	MA Mortenson	The Mundy Companies
DaKO Services, Inc.	Maintenance Enterprises	The Tri-M Group, LLC
Dck Pacific Guam, LLC	Manhattan Construction Co.	Thermal Insulation, Inc.
Delran Builders Co., Inc.	Marek Brothers Systems, Inc.	Thermal-Tec/Michigan, Inc.
DiMarco Constructors, LLC	Marquis Construction Services, Inc.	TIC - The Industrial Company
DiSabatino Construction Company	McCarthy Building Companies, Inc.	Titan Contracting/Horn Industrial Services
Eastern Industrial Services, Inc.	Meyer Najem Construction	TNT Crane & Rigging, Inc.
Echo Maintenance, Ltd.	Midstate Site Development, LLC	Total-Western, Inc.
Electrical Energy Systems Corp.	Miller-Valentine Group	TP Mechanical Contractors
Elzinga & Volkers, Inc.	MMR Constructors, Inc.	Triad Electric & Controls, Inc.
Erickson Builders Co., Inc.	Mobley Industrial Services, Inc.	Turner
Facchina Construction of Florida, LLC	Mountain States Fence Co.	Turner Construction Company
Fast Track Specialties, LP	Multi-Weld Services, Inc.	VIRTEXCO Corp.
FaverGray	Murray Building Company, Inc.	W.G. Yates & Sons Construction
Flintco, LLC	Nickle Electrical Companies	W.S. Nielsen Company, Inc.
Fogel-Anderson Construction Co.	Notch Mechanical Constructors	W.T. Byler Co.
Fortune-Johnson General Contractors	Nova Group, Inc.	Wagner General Contractors, Inc.
G.E. Insulation Co.	Oakridge Builders	Walker & Company, Inc.
Gaylor Electric, Inc.	Ohmstede	Westgate, LLC
GG+A Construction	Old Dominion Firestopping, LLC	Williams Building Company, Inc.
Gray Construction	Oxentenko, Inc.	Wolfenson Electric, Inc.
GSL Electric	PCE Constructors, Inc.	
Harvey-Cleary Builders	PCL Construction Services, Inc.	

INDEX OF ALL WINNERS

Adolfson & Peterson Construction	15	Gorski Engineering, Inc.	23	Regal Construction, LLC	17
Aggregate Technologies, Inc.	21, 27	Greystone Construction Company	21	Rentenbach Constructors Incorporated	22
Alpine Painting & Sandblasting Contractors	21	GROUP Contractors, LLC	14	RK Mechanical	20
AUI	10	Haley-Greer, Inc.	6	RLS Construction Group	26
BakerTriangle	20	Helix Electric	4, 20, 23	Robins & Morton	22
Barriere Construction Company, LLC	27	Hensel Phelps	22, 29	Rodgers Builders, Inc.	12, 23
Benchmark Construction Company, Inc.	27	HITT Contracting Inc.	21	Roy Anderson Corp	21
Big D Metalworks	8	Hoar Construction, LLC	10, 11, 18, 19, 21, 23	S & B Engineers and Constructors, Ltd.	23, 27
Black Construction Corporation	18	hth companies, inc.	26	Satterfield & Pontikes Construction	23
Brasfield & Gorrie, LLC	11, 12, 15, 17, 18, 22	IES Commercial	27	SDV Construction, Inc.	26
Caddell Construction Co.	26	Interstates Companies	20, 26	Sebastian Construction Group	23
Cajun Constructors, LLC	13, 23	ISC Constructors, LLC	5, 20, 27	Spacecon Specialty Contractors	7
Cajun Industries, LLC	26	Kwest Group, LLC	9, 26	SpawGlass Construction Corp.	13
CB&I, Oil & Gas	26	Landis Construction Co., LLC	21	SPC Mechanical	7
Centennial Contractors Enterprises, Inc.	27	Landscape Management Systems, Inc.	27	Standard Constructors, Inc.	8, 26
Choate Construction Company	16	Lauren Engineers & Constructors, Inc.	26	Synergy Construction, Inc.	23
Cianbro Corporation	14, 22, 26	LPR Construction	27	TDIndustries, Inc.	7, 20
CMS Corporation	11, 26	Manhattan Mechanical Services	20	The Joseph Company, Inc.	23
Color Works Painting, Inc	26	MEC2	29	The Mullan Contracting Company	22
Comfort Systems of Virginia, Inc.	27	Messer Construction Co.	23	The Tri-M Group, LLC	20
Consolidated Construction Co., Inc.	21	Milender White Construction Co.	17	Three Rivers Corporation	26
Coutts Bros., Inc.	27	MKD Electric	27	TIC - The Industrial Company	16
D.E. Harvey Builders, Inc.	26	MMR Constructors, Inc.	5	Triad Electric & Controls, Inc.	20
David Allen Company, Inc.	20, 30	Mobley Industrial Services, Inc.	27	Trio Electric, Ltd.	5
DonahueFavret Contractors, Inc.	15	Mortenson Construction	23	Turner Industries Group, LLC	26
Doster Construction Company, Inc.	13	MTech Mechanical	20	United Group Services	27
DPR Construction	21	Nor-Son, Inc.	12, 19	United Rentals	29
Duro Electric Company	4	Northern Electric, Inc.	27	Voelkel McWilliams Construction	23
Durr Heavy Construction, LLC	21	Nova Group, Inc.	26	W.G. Yates & Sons Construction	26
E.E. Reed Construction, L.P.	21	PCL Industrial Construction Company	26	Waldrop Mechanical Services	8
EXCEL Contractors, Inc.	22	PCL Industrial Services, Inc.	26	Warfel Construction Company	21
Flintco, LLC	22	Performance Contractors, Inc.	14, 26	Wayne Brothers, Inc.	21
Forrester Construction Company	22	Performance Systems, Inc.	27	White Construction Company	10
General Excavating	21	Pinkard Construction Co.	27	Wohlsen Construction Company	19, 27
GFP Cement Contractors, LLC	27	Precision Walls, Inc.	6, 20	Wu & Associates	29
Gibbs Construction	22	Premier Stoneworks, LLC	6	Yates Construction	9
Gilbane Building Company	22, 26	R.C. Mathews Contractor, LLC	16	Zartman Construction, Inc.	22

Thank You to Our Sponsors

National Excellence in Construction® Platinum Sponsors



National Excellence in Construction® Post-event Reception Sponsors



National Safety Excellence Award Sponsor



We can show you more.®

National Diversity Excellence Award Sponsor





440 FIRST ST. NW, SUITE 200
WASHINGTON, D.C., 20001
(202) 595-1505
ABC.ORG